



Serøse væsker

- morfologi-hints

Anita Høvenhoff
April 2024

Morfologiske markører

Morphological markers of chromosomal instability as predictors of malignancy in pleural effusion

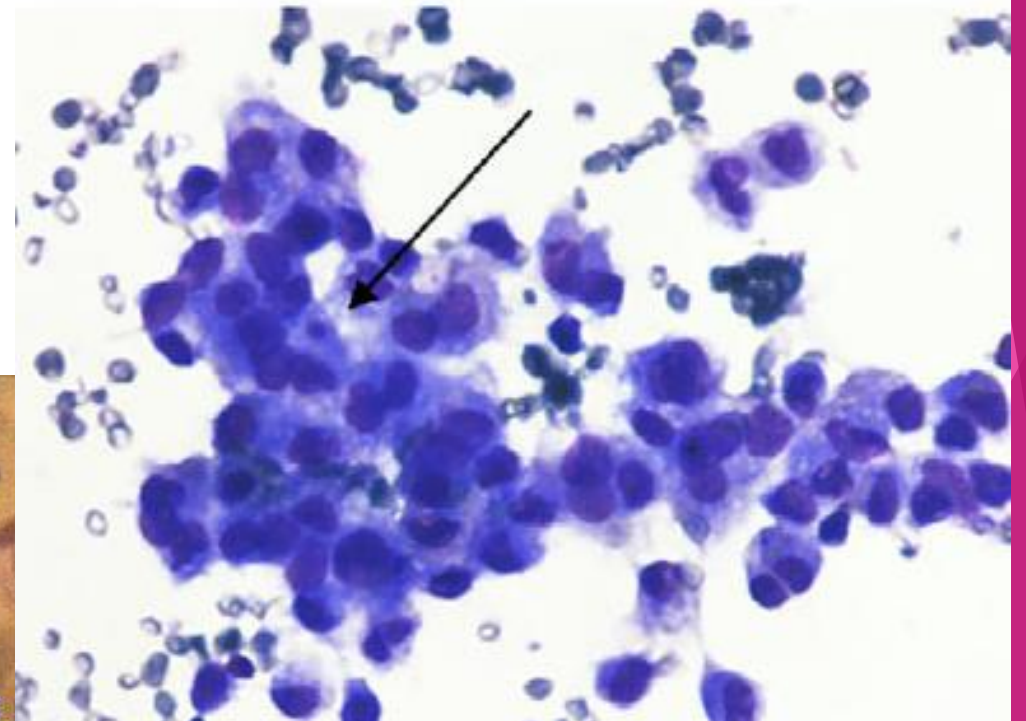
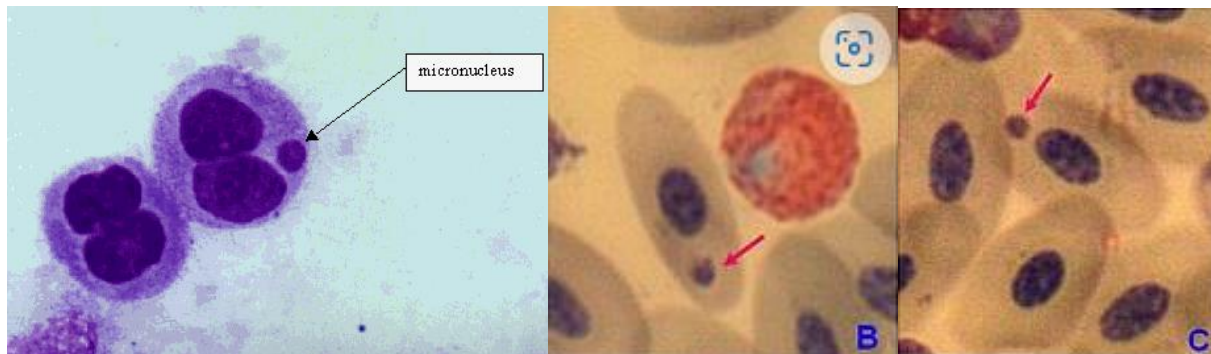
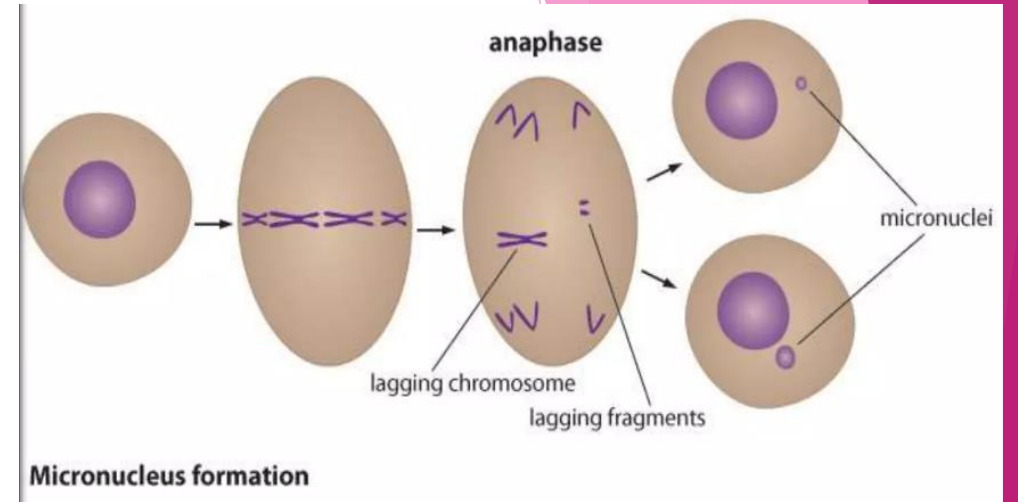
Phiza Aggarwal MD¹  | Uma Handa MD¹  | Ranjeev Bhagat MD¹ | Deepak Aggarwal MD²

- ▶ Serøse væsker fungerer som et vigtigt værktøj i forbindelse med prognose og behandling.
- ▶ Sensitiviteten varierer fra 40-90% gennem forskellige studier.
- ▶ Kan være svært at skelne reaktive mesothelceller fra maligne celler.
- ▶ Evalueringen af morfologiske kriterier kan hjælpe:
 - ▶ Mikrokerner
 - ▶ Kromatin broer
 - ▶ Kerne "budding"
 - ▶ Multipolære mitoser
- ▶ Har vist sig at være en hjælpsomt værktøj i acitesvæsker.

Morfologiske markører

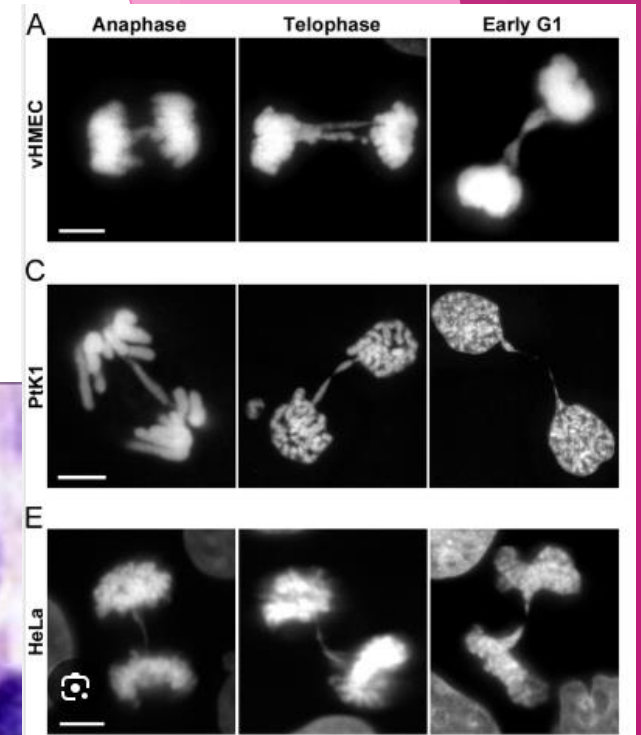
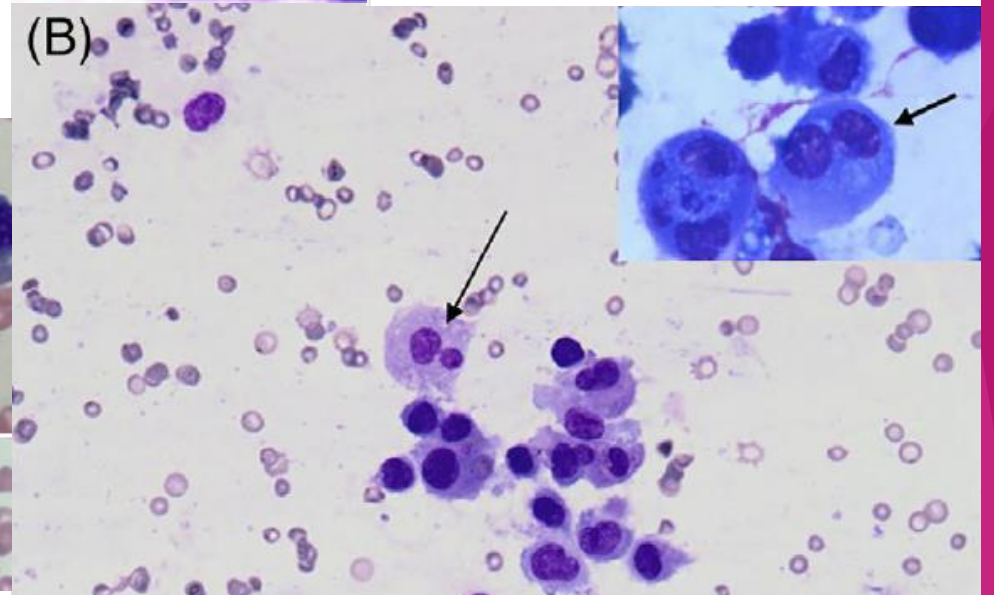
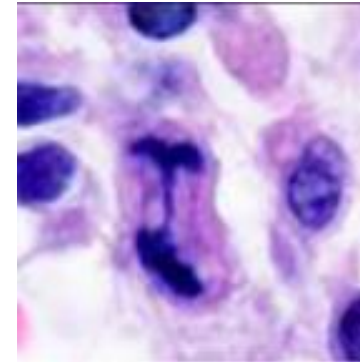
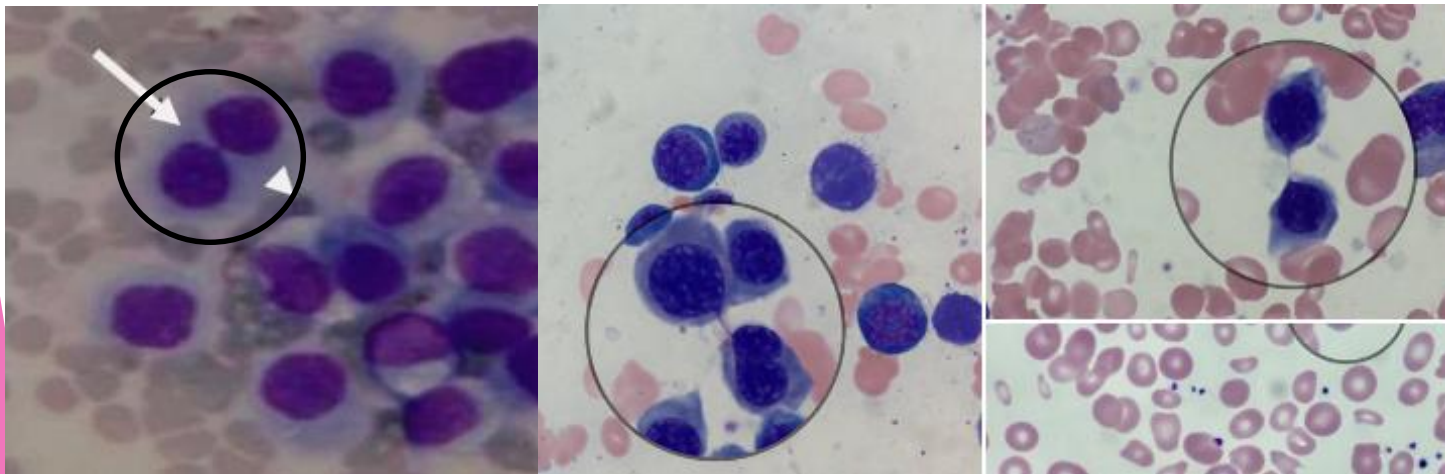
▶ Mikrokerner

- ▶ Ekstranukleær legeme i cytoplasmaet
- ▶ Rund til oval
- ▶ Størrelse op til 1/3 af kernen (men ikke større)
- ▶ Skyldes skade på kromosomet under celledeling



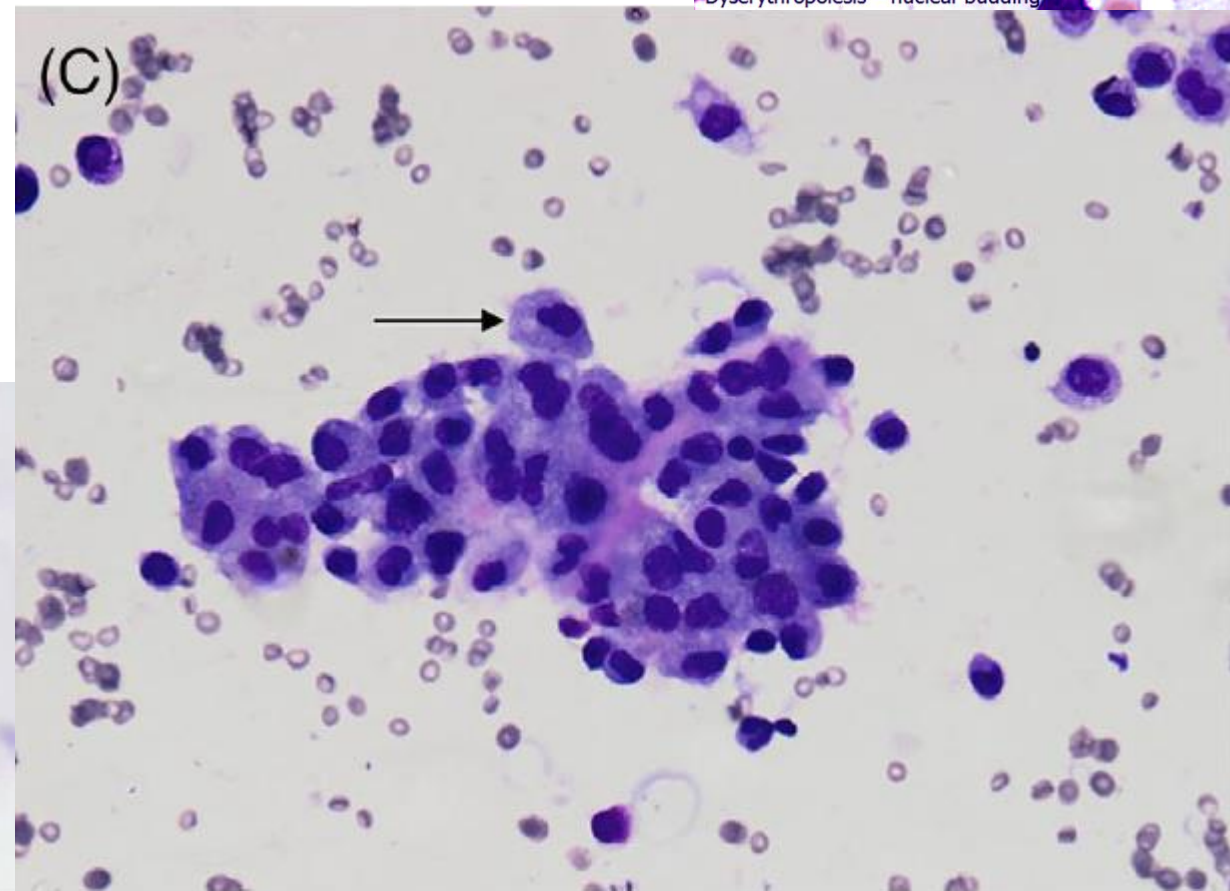
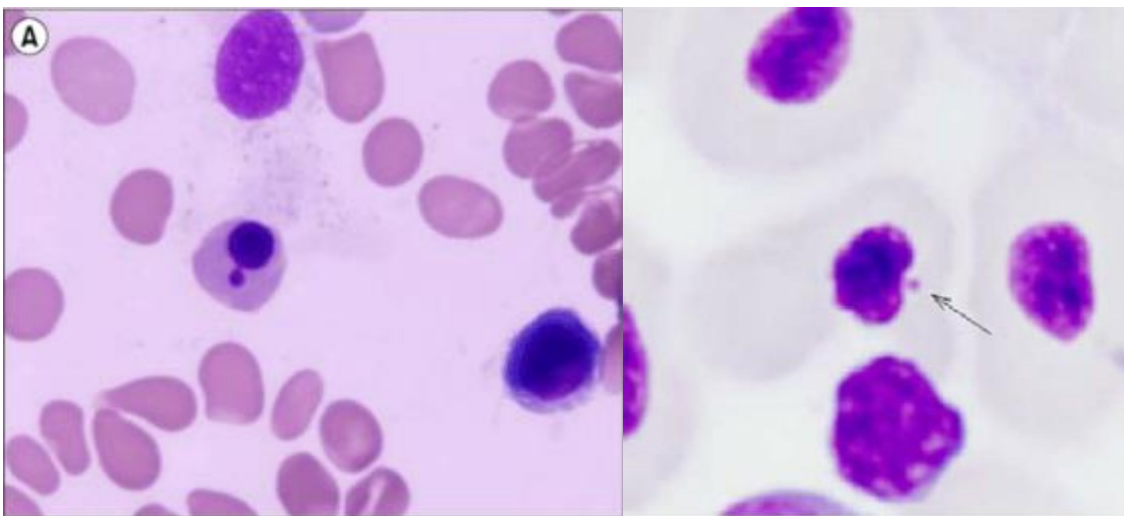
Morfologiske markører

- ▶ Kromatin broer
 - ▶ Streng af kromatin, der forbinder de to masser af kromatin i anafase under celledeling



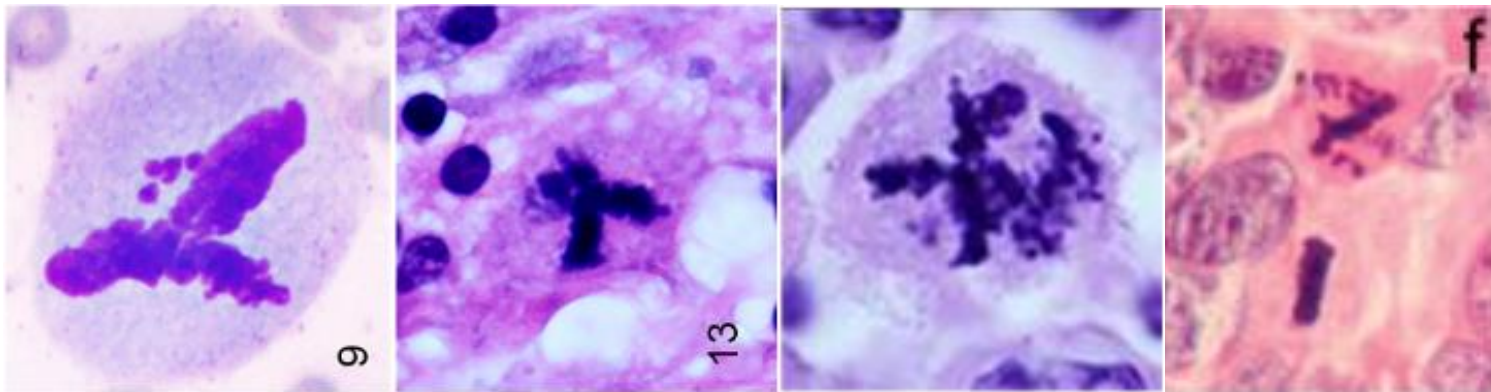
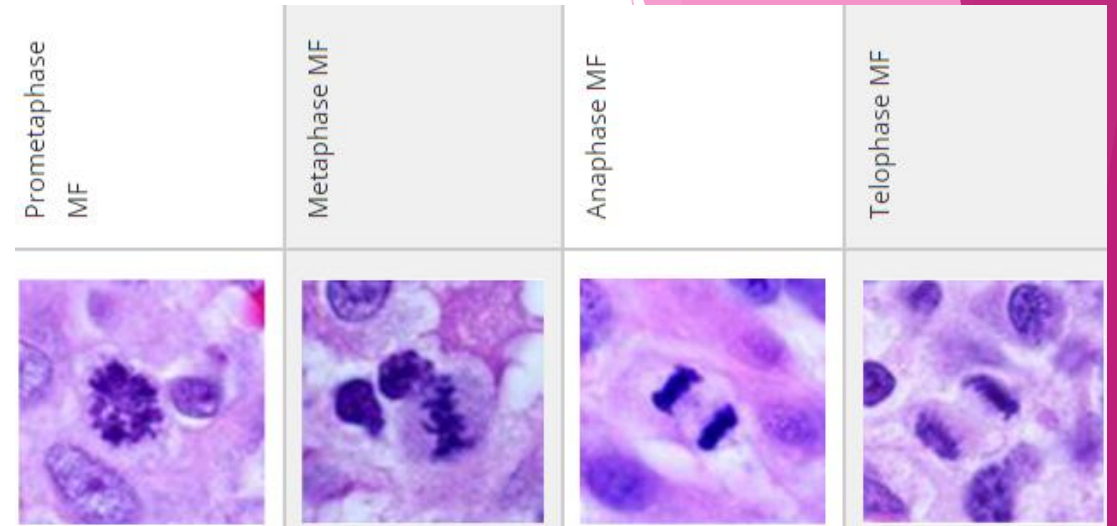
Morfologiske markører

- ▶ Kerne "budding"
 - ▶ Acentrisk fragment, som hænger fast på kernemembranen med en "stilk"



Morfologiske markører

- ▶ Multipolære mitoser
 - ▶ Mere end 2 "plader" af kromosom i hvilket som helst stadie af mitose.
 - ▶ Samme som uens distribution af kromosomerne i kernen.

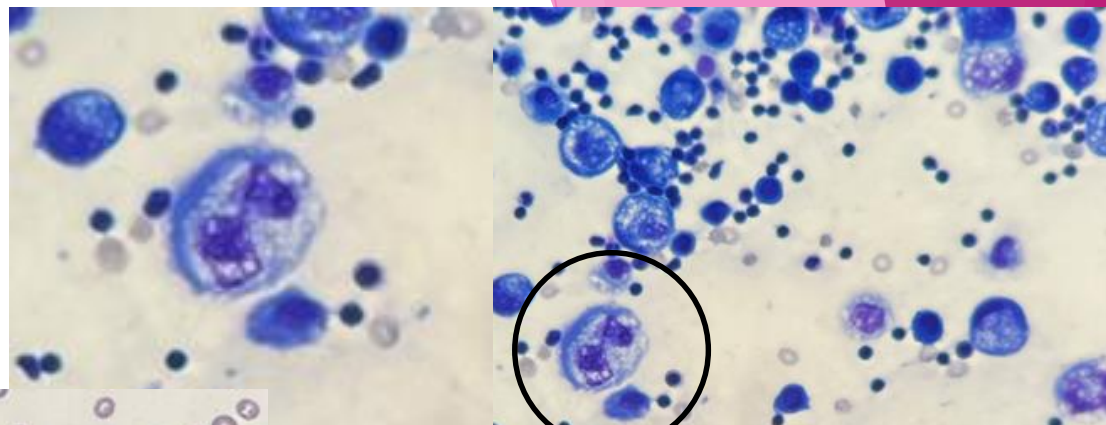


Studie setup og resultater

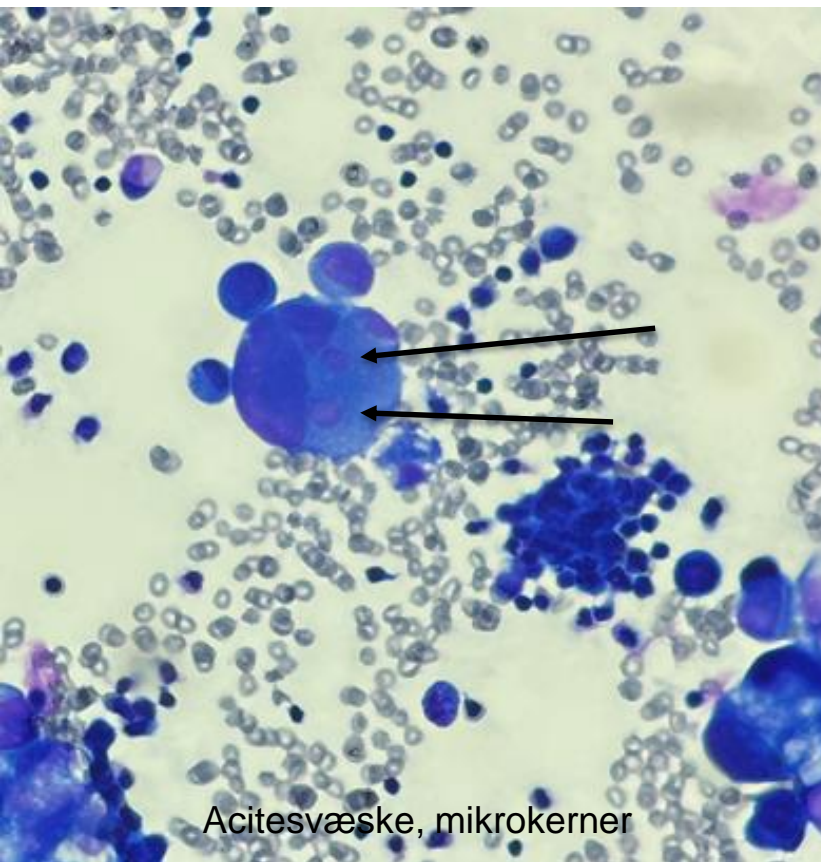
- ▶ 72 serøse væsker (pleuravæsker)
 - ▶ 1000 velbevarede maligne celler/ mesothelceller scores med de 4 morfologiske markører.
 - ▶ Zig-zag mikroskopi → ca. 30min pr. slide.
- ▶ Signifikant højere score (pr. 1000 celler) af de morfologiske markører i de maligne sammenlignet med de benigne væsker.
 - ▶ Mikrokerner
 - ▶ 7,26±2,24 maligne mod 1±0,71 benigne
 - ▶ Cut off på 5 (= 88% sensitiv for malignitet)
 - ▶ Kerne ”budding”
 - ▶ 9,55±5,53 maligne mod 1,1±0,86 benigne
- ▶ Konklusion:
 - ▶ Bruge de morfologiske markører som et supplerende værktøj???

	Parameter	Malignant pleural effusion		Benign pleural effusion		p value
		Range	Mean ± SD	Range	Mean ± SD	
1	Micronuclei	0-15	7.26 ± 2.74	0-2	1 ± 0.71	<.001
2	Chromatin bridging	0-4	1.83 ± 1.17	0-1	0.38 ± 0.50	<.001
3	Nuclear budding	0-20	9.55 ± 5.53	0-3	1.1 ± 0.86	<.001
4	Multipolar mitosis	0-5	2.21 ± 1.62	0-1	0.15 ± 0.37	<.001

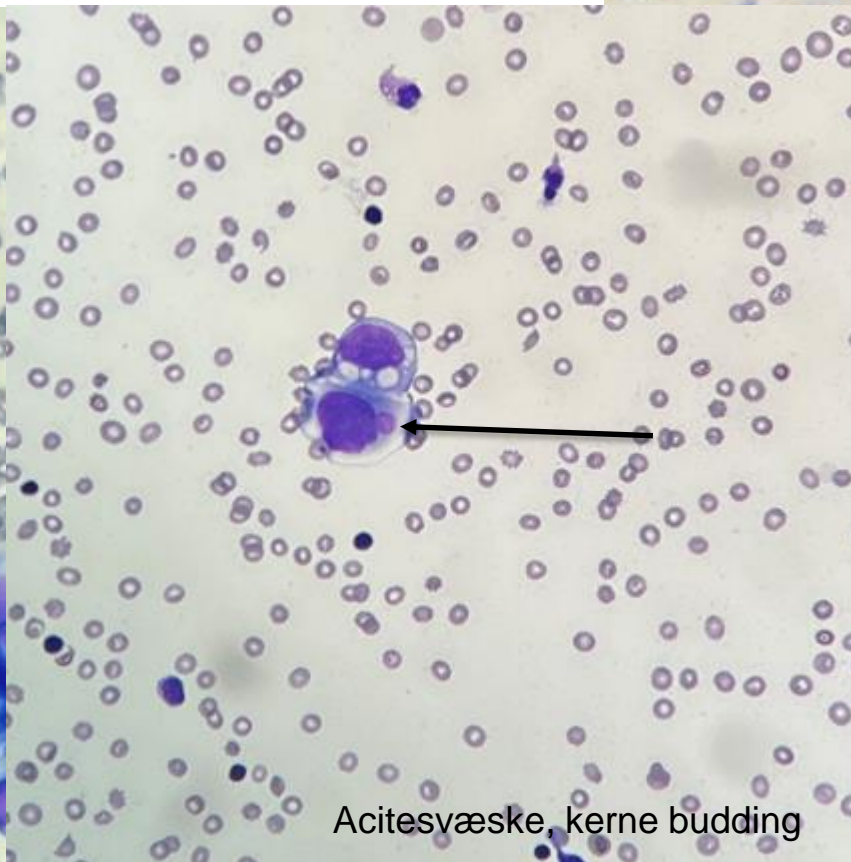
Vores egne præparater



Pleuravæske, kromatin broer



Acitesvæske, mikrokerner



Acitesvæske, kerne budding



Acitesvæske, mikrokerner og kerne budding