

# LUNGE CASE

## **Kliniske oplysninger:**

75 årig kvinde med central højresidig tumor.

Ryger 30 pakkeår.

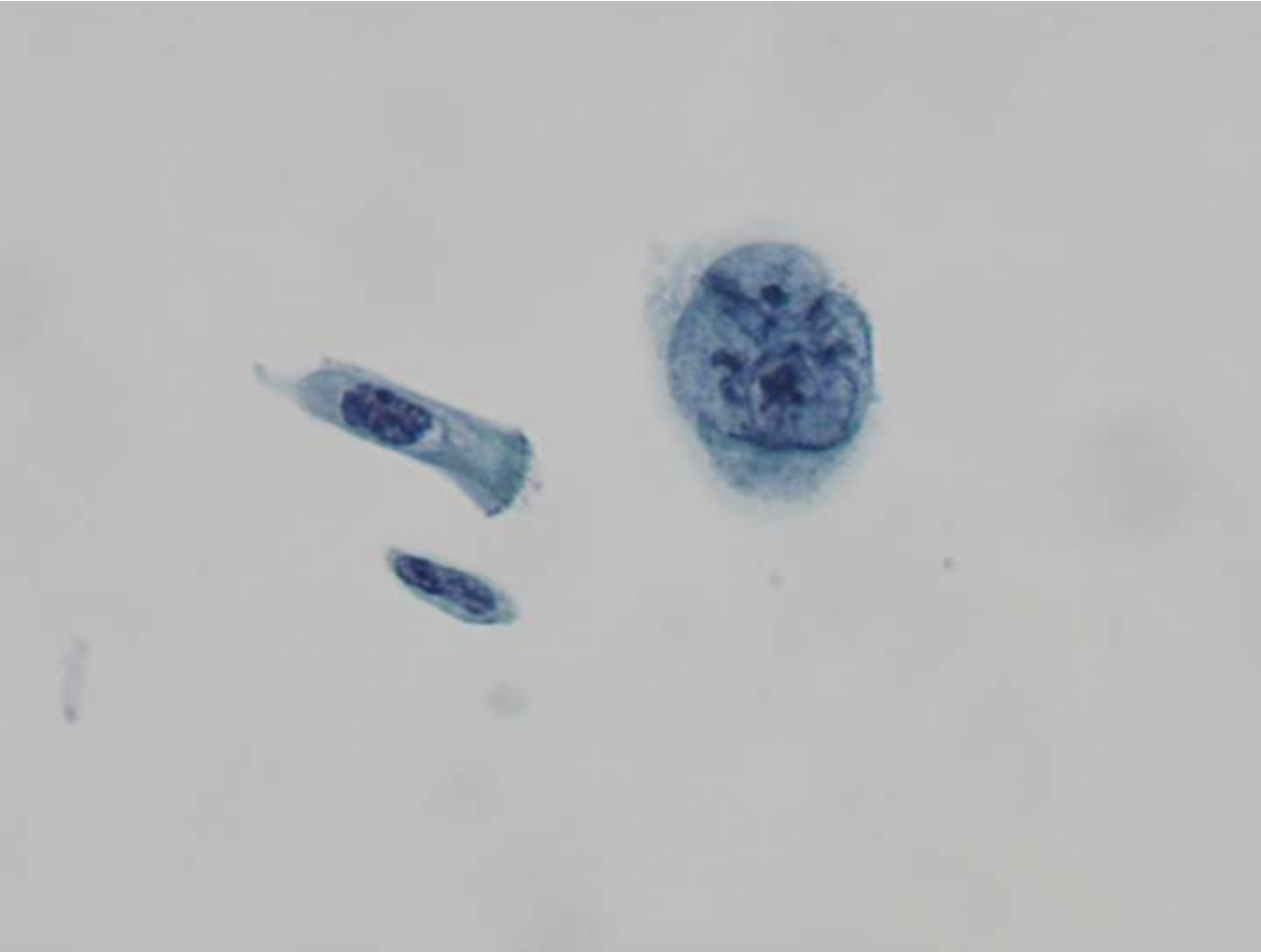
FEV1 73%.

God AT

Synlig tumorbvæv i trachea og hø hovedbr.

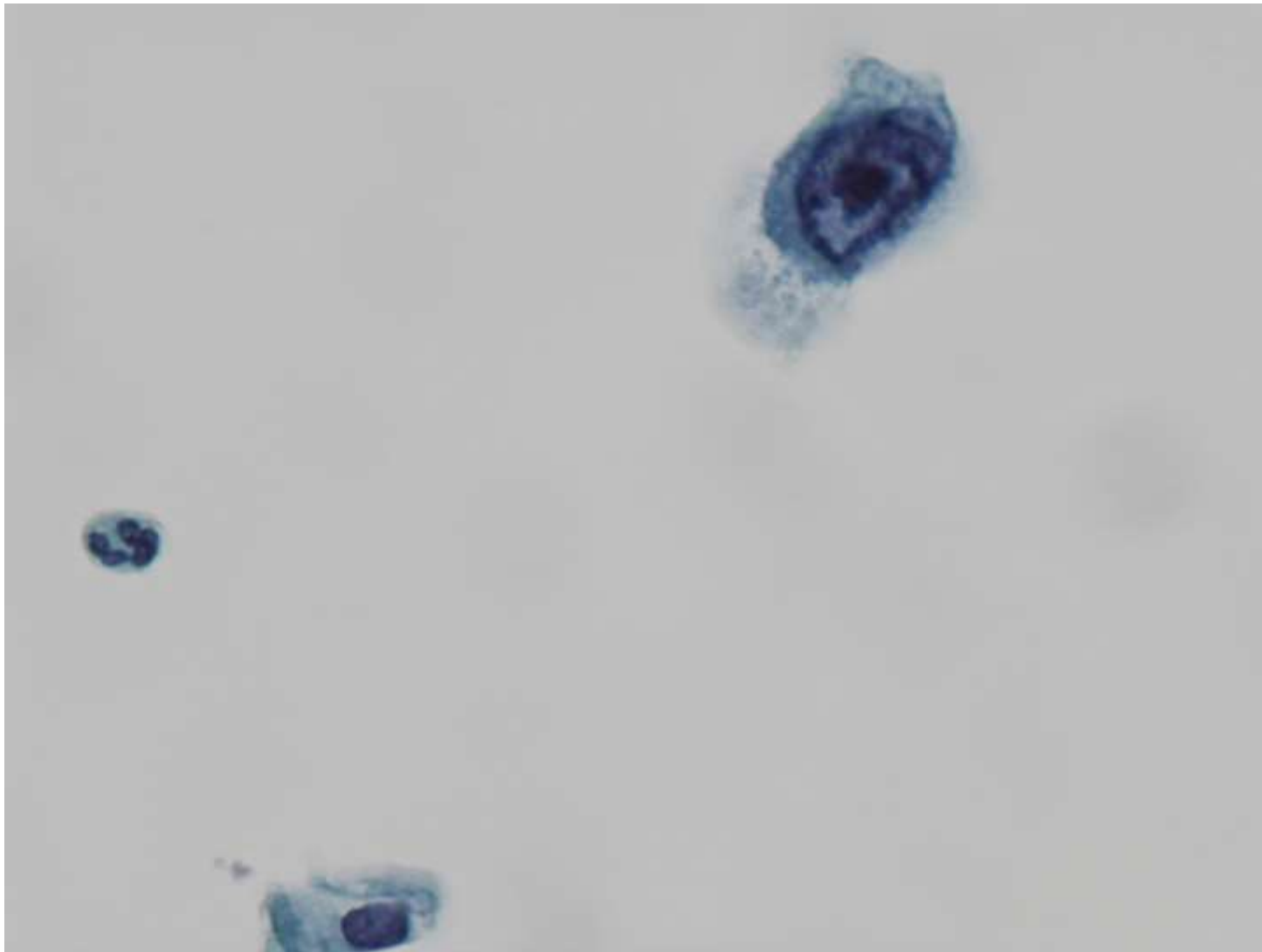
---

# Bronkialsekret



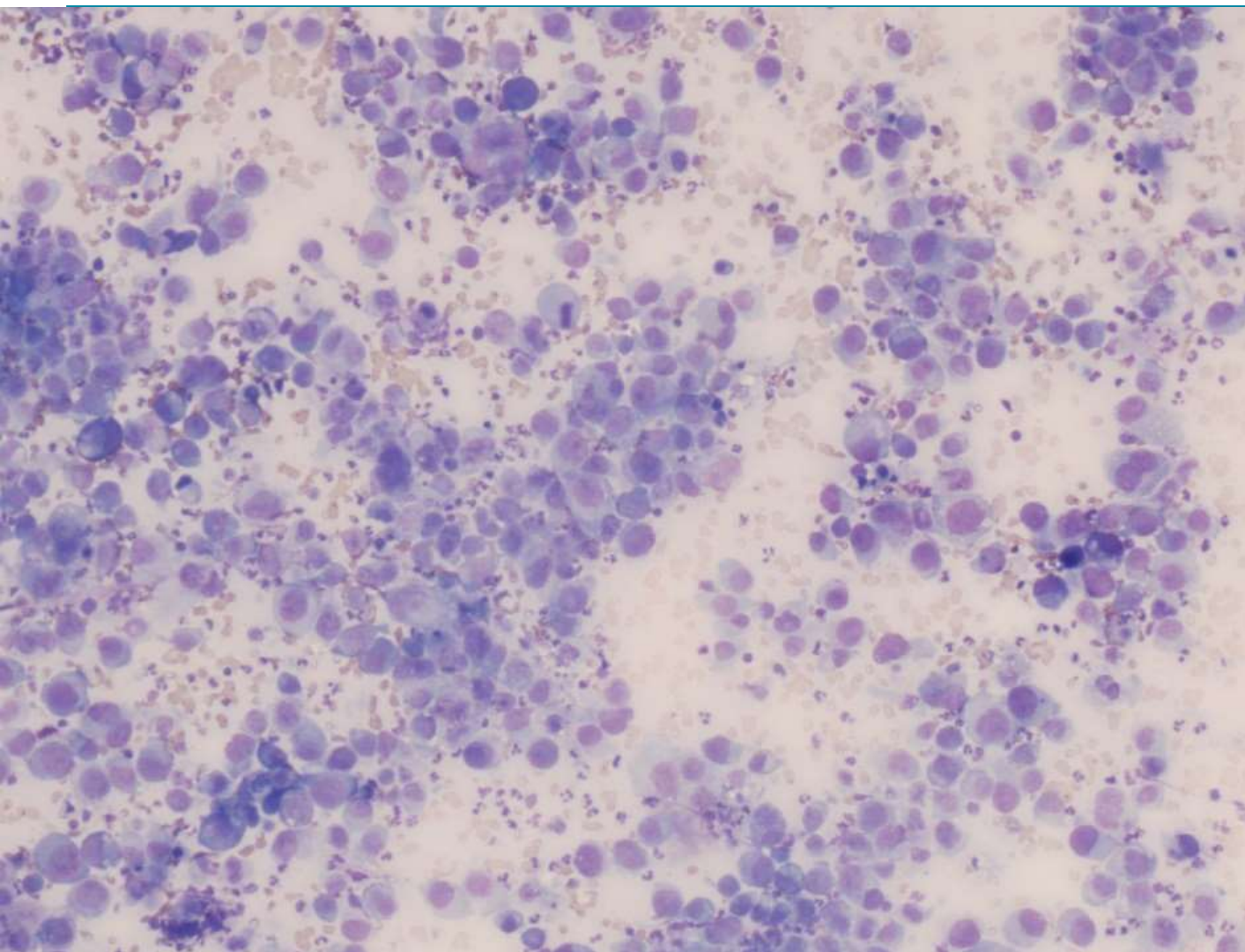
BD SurePath pap.  
600 x forstr.

# Bronkialsekret



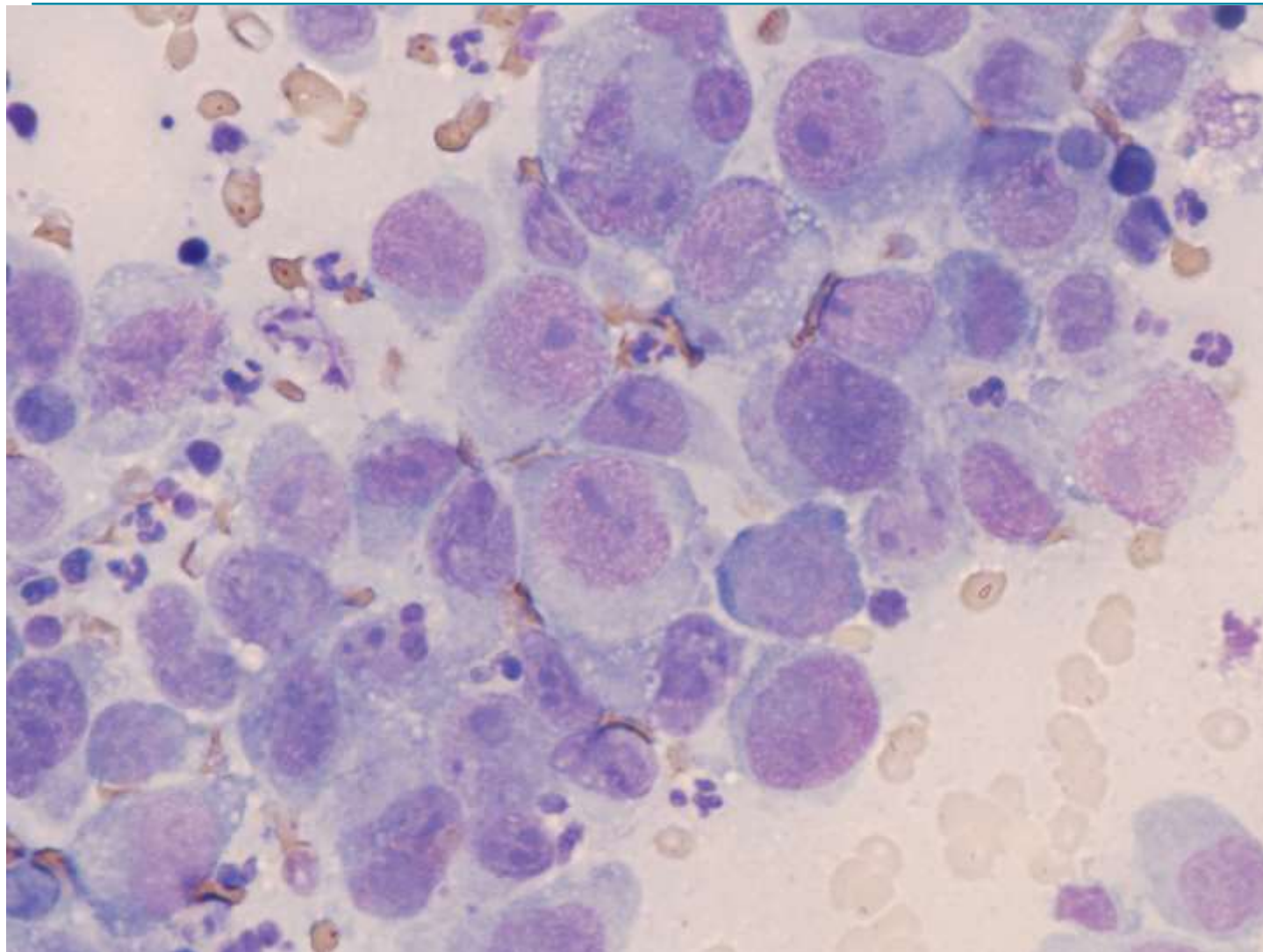
BD SurePath pap.  
600 x forstr.

# EBUS



MGG  
100 x forstr.

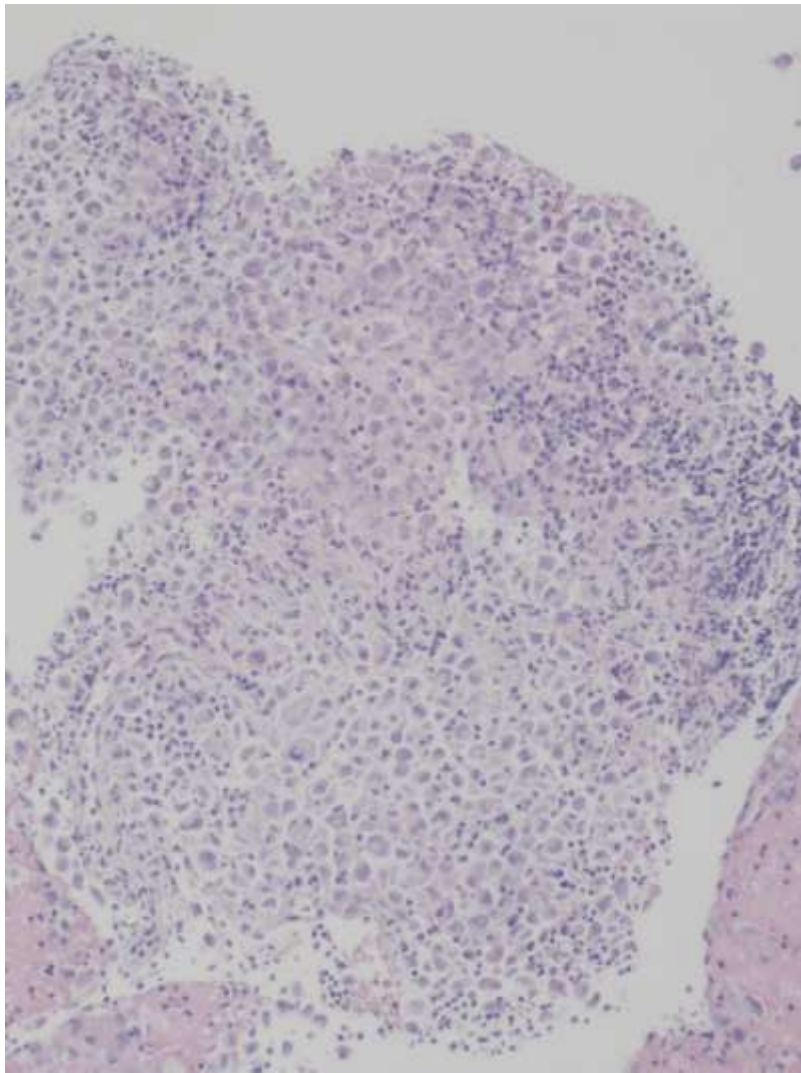
# EBUS



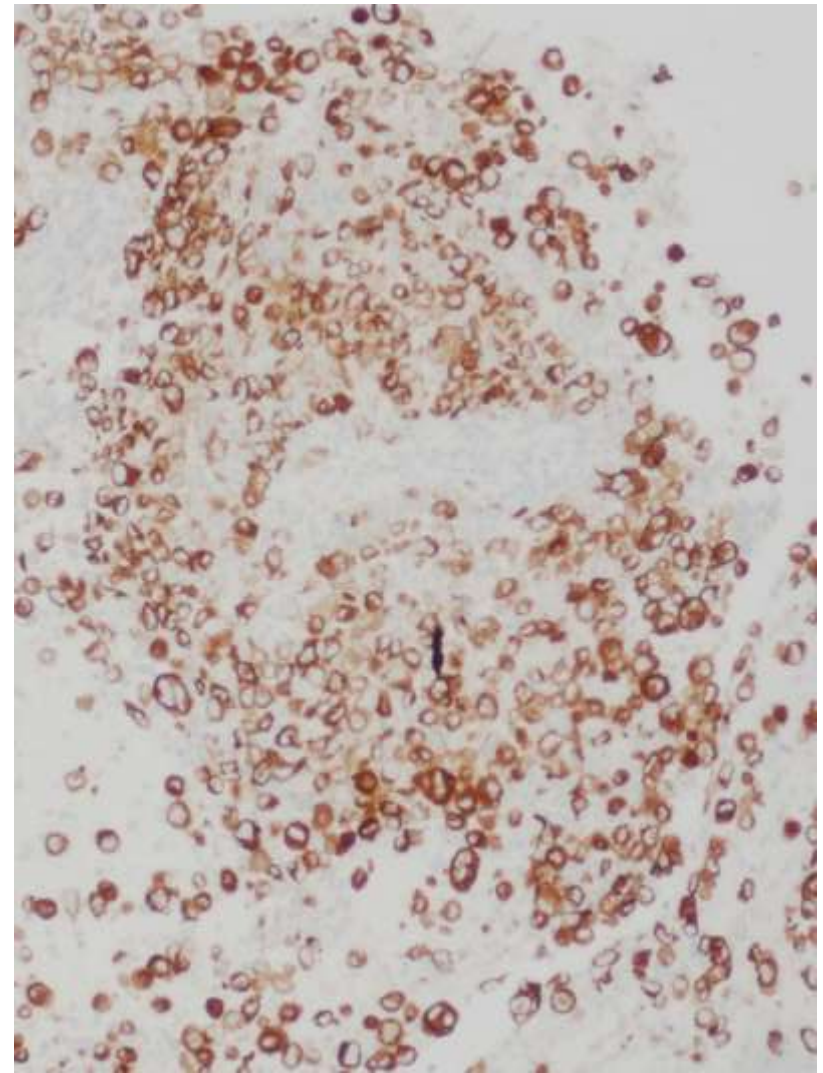
MGG  
400 x forstr.



# EBUS koagel

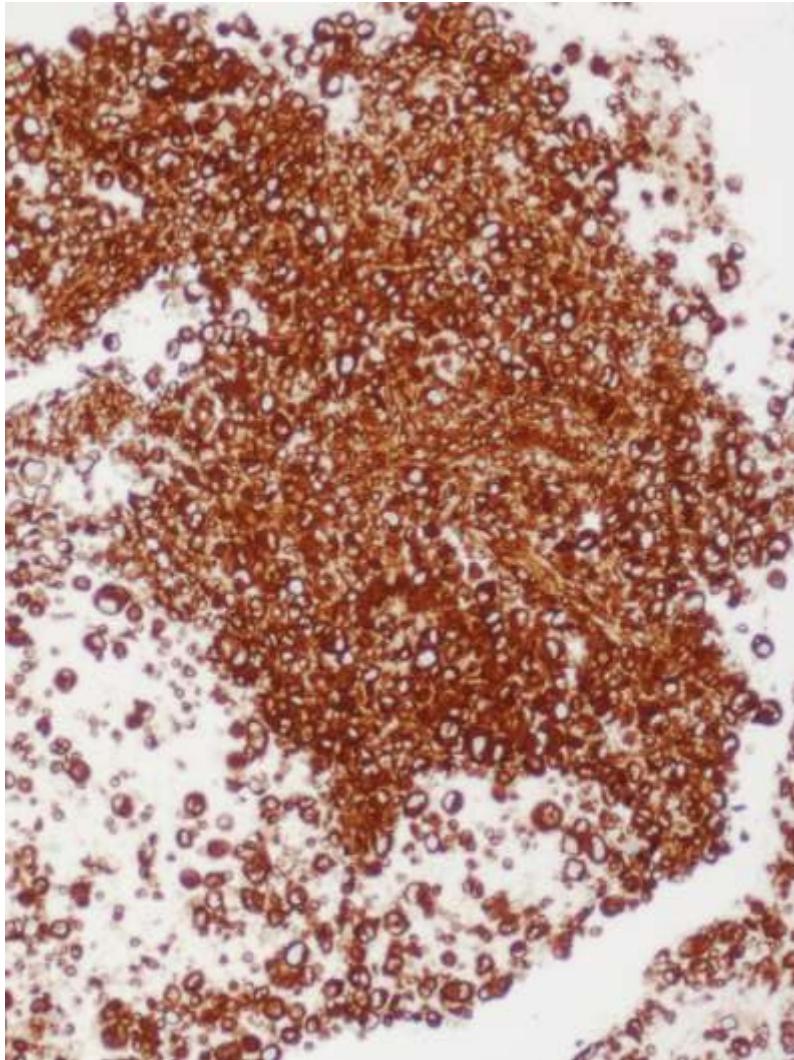


HE 100 x forstr.

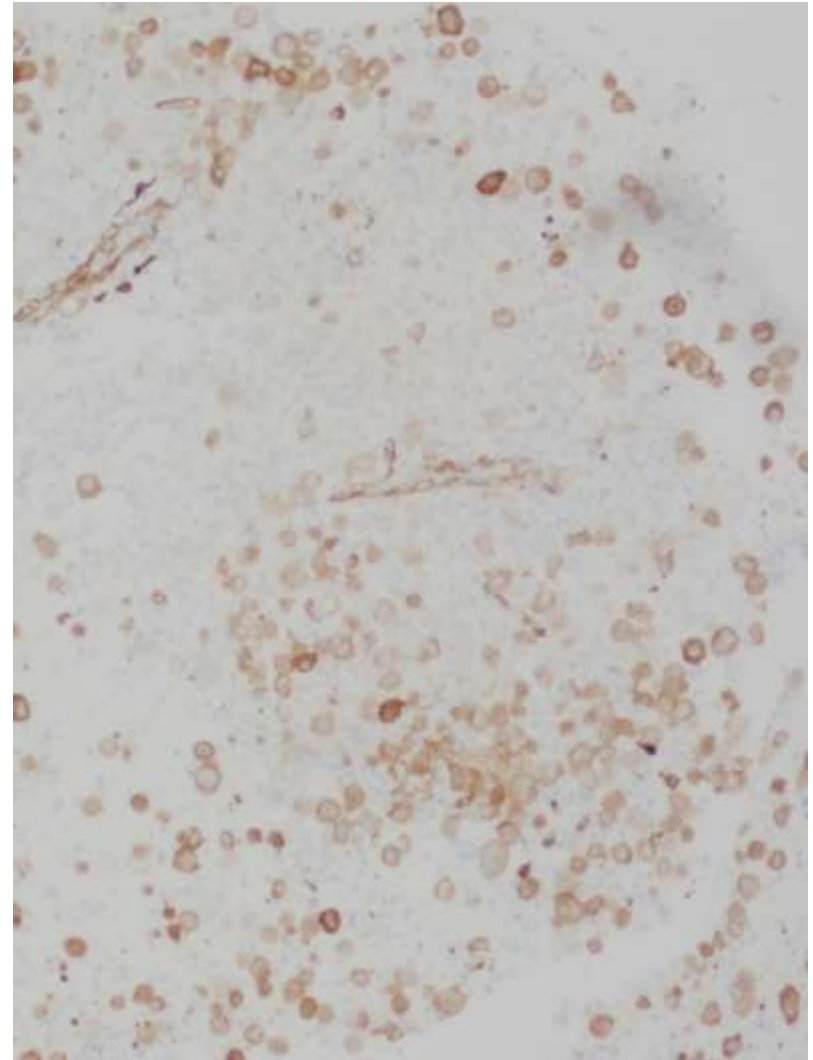


Pancytokin positiv 100 x forstr.

# EBUS koagel



VIM positiv 100 x forstr.



Fascin positiv 100 x forstr.

# Diagnose

---

## **Immunprofil:**

Positiv: pancytokeratin, vimentin og fascin

Negativ: TTF1, CK5/14, P40, CK7, Napsin og ALK

## **Cytologi:**

**Pleomorft karcinom**

---