

The background of the slide is a microscopic image of a urine sediment smear. It shows numerous small, blue-stained cells, likely leukocytes, scattered across the field. Some cells are in small clusters, while others are isolated. The staining is a deep blue, typical of a Papanicolaou (Pap) stain. The overall appearance is that of a normal or slightly inflamed urine sediment.

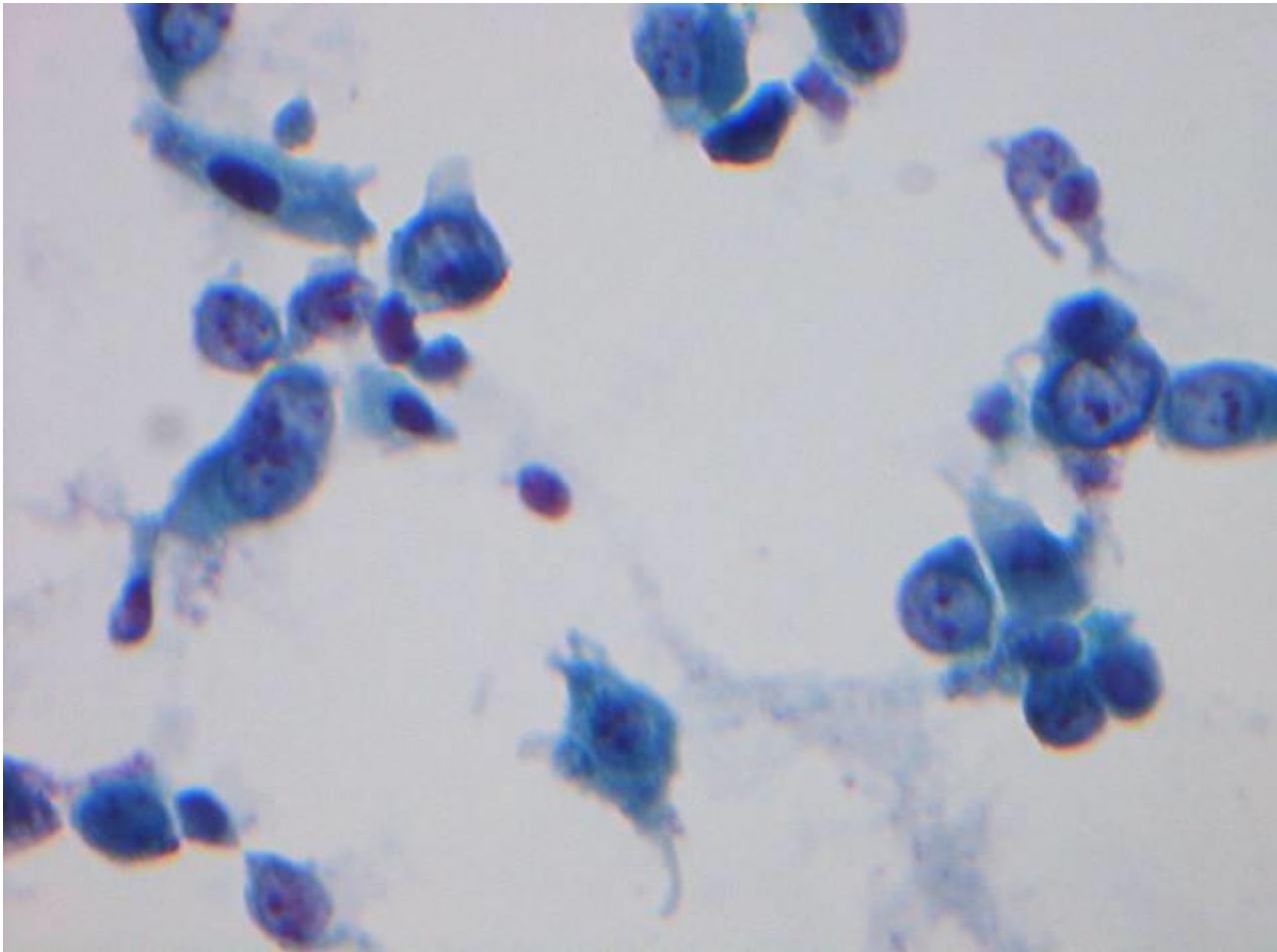
Månedens case oktober
Cases fra urincytologikursus 2013

Emilie Wiberg og Louise Lindholt
Patologisk afd. Herlev Hospital

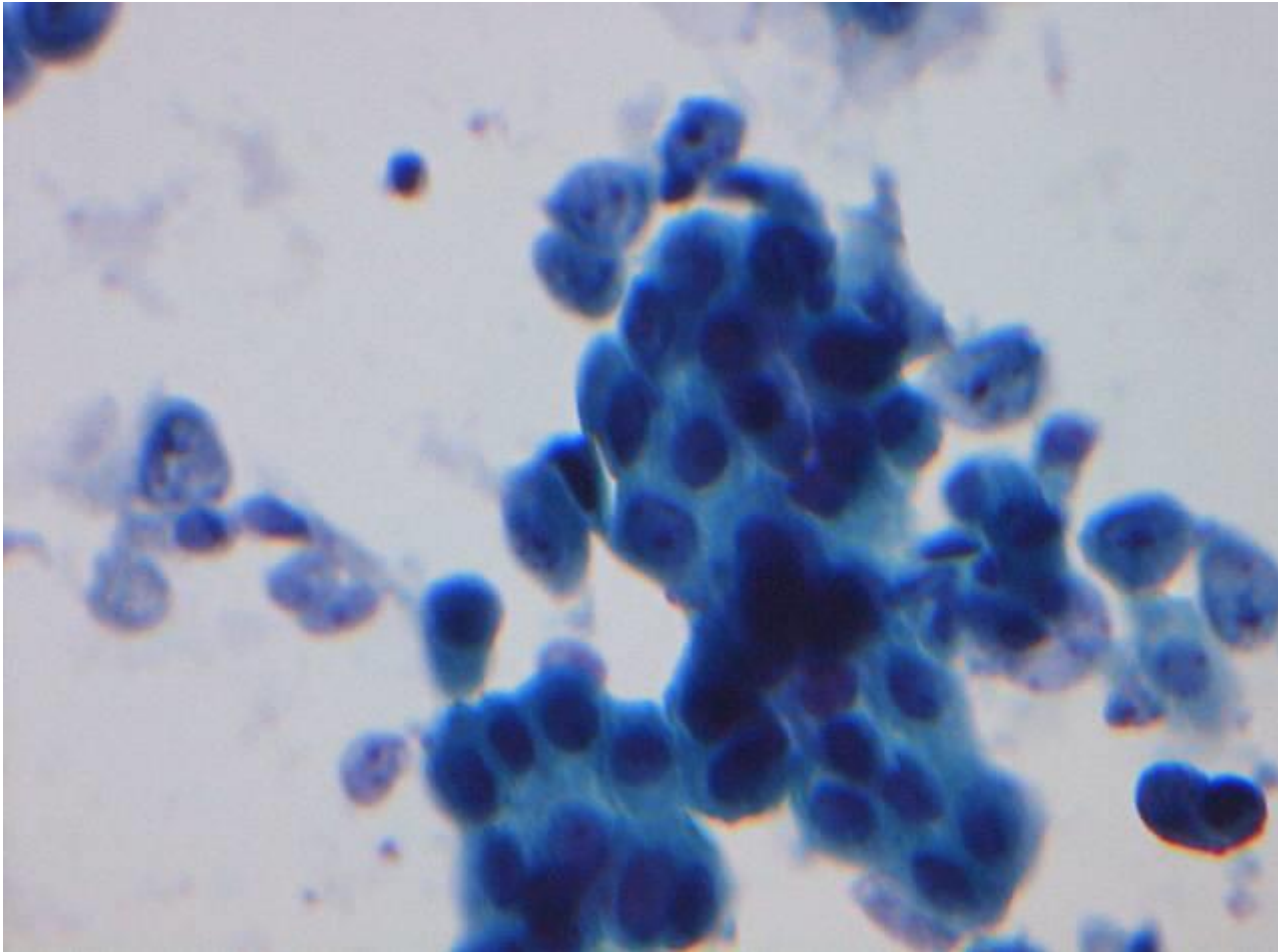
Case 1

- Kvinde 77 år
- Kendt med blæretumor i feb. 2009
- Atypiske celler i urin fra juni 2010
- Normal urin + histologi i nov. 2010 og april 2011

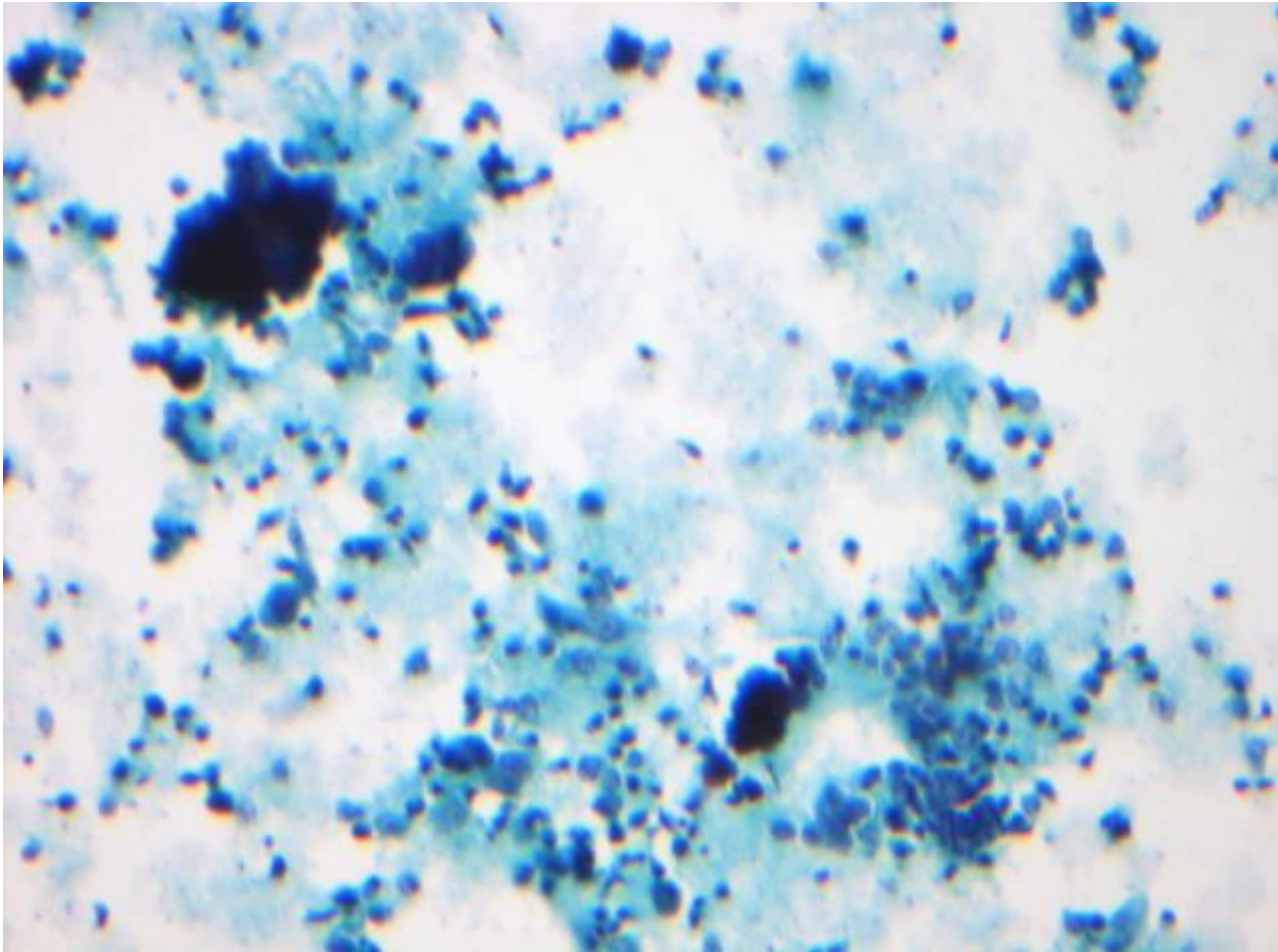
August 2011 – henvisning blærepolypyper (400x)



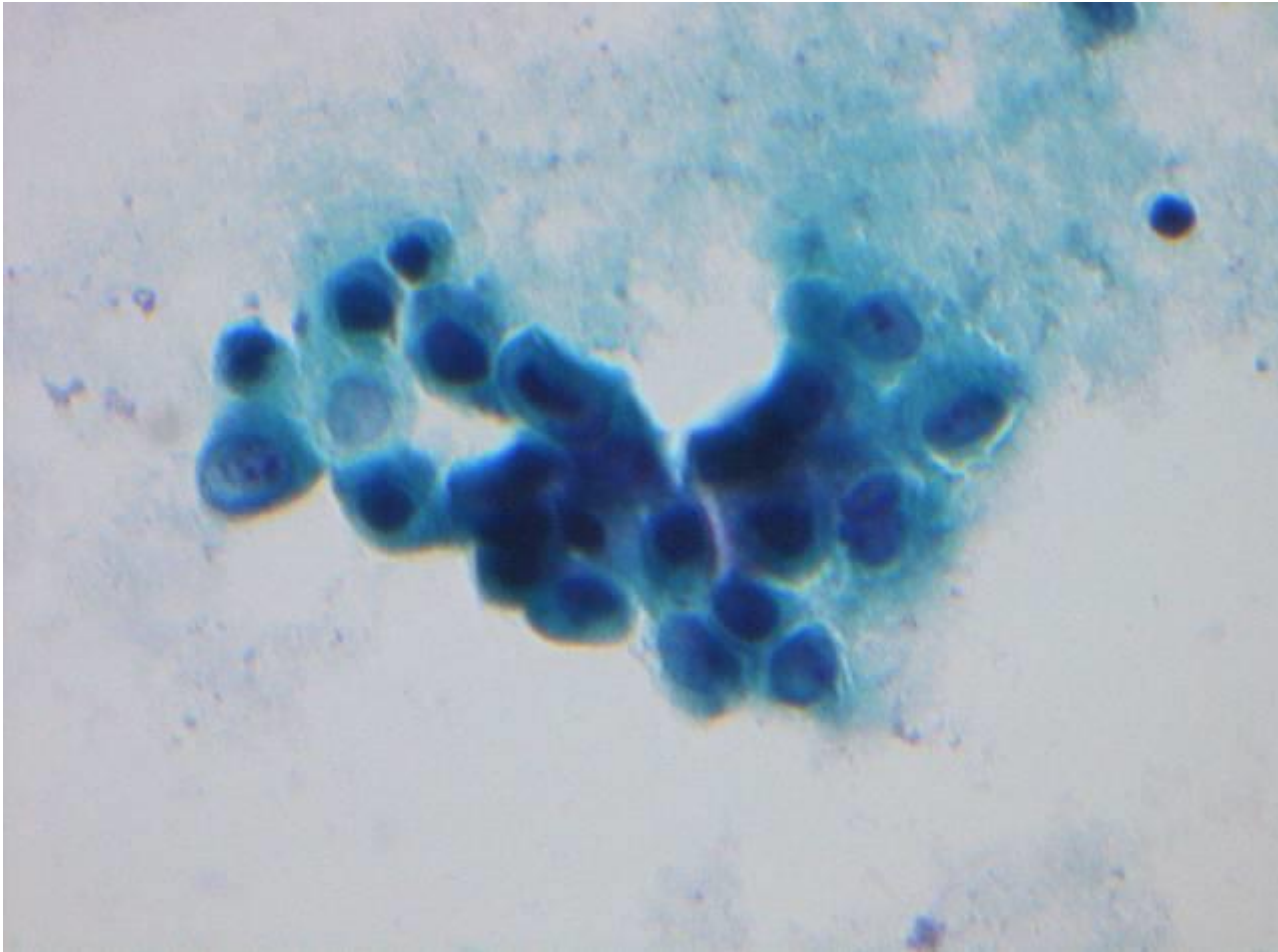
August 2011 – henv.
blærepolypper (400x)



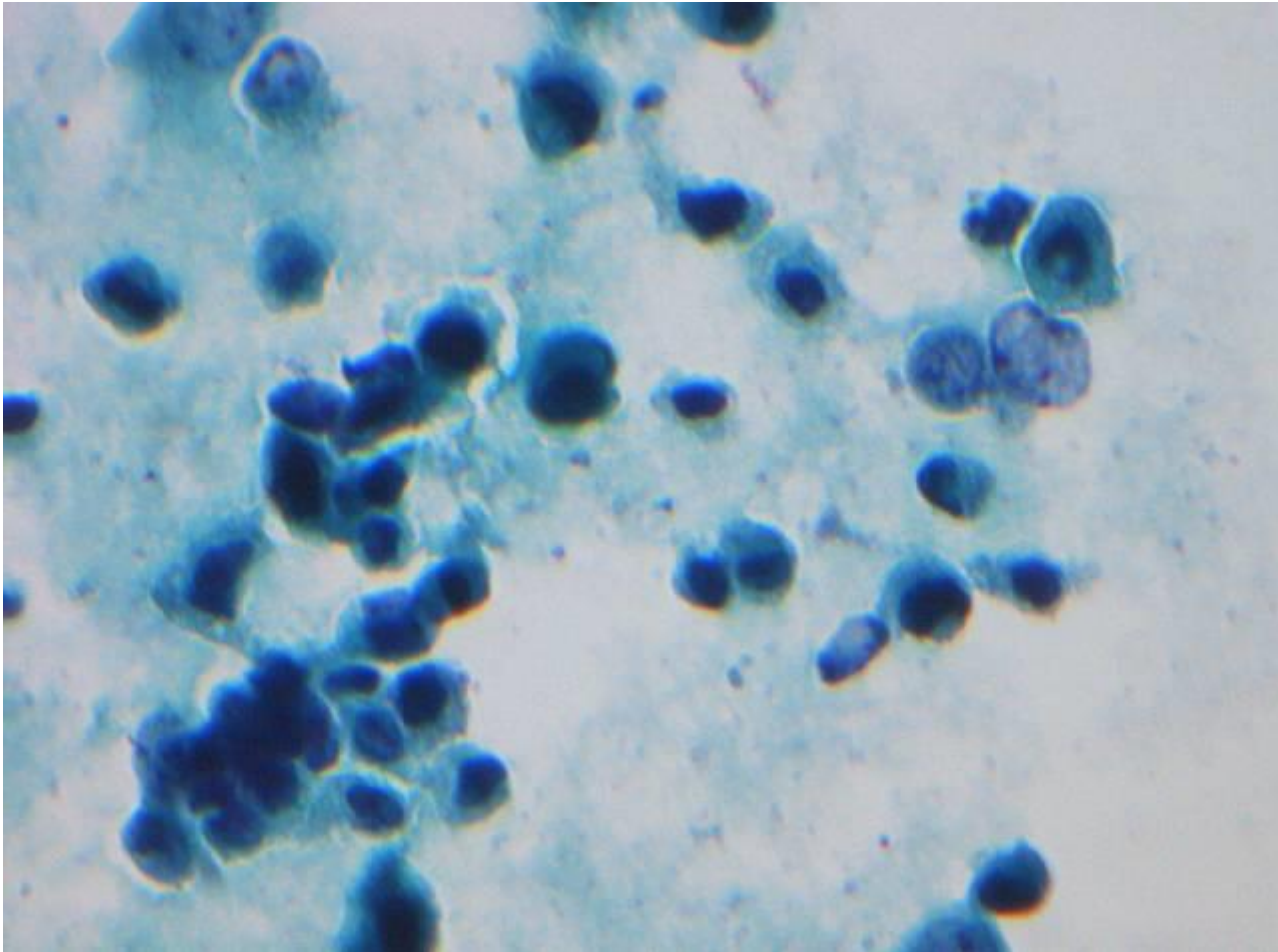
Marts 2012 – henv. obs. blærecancer (100x)



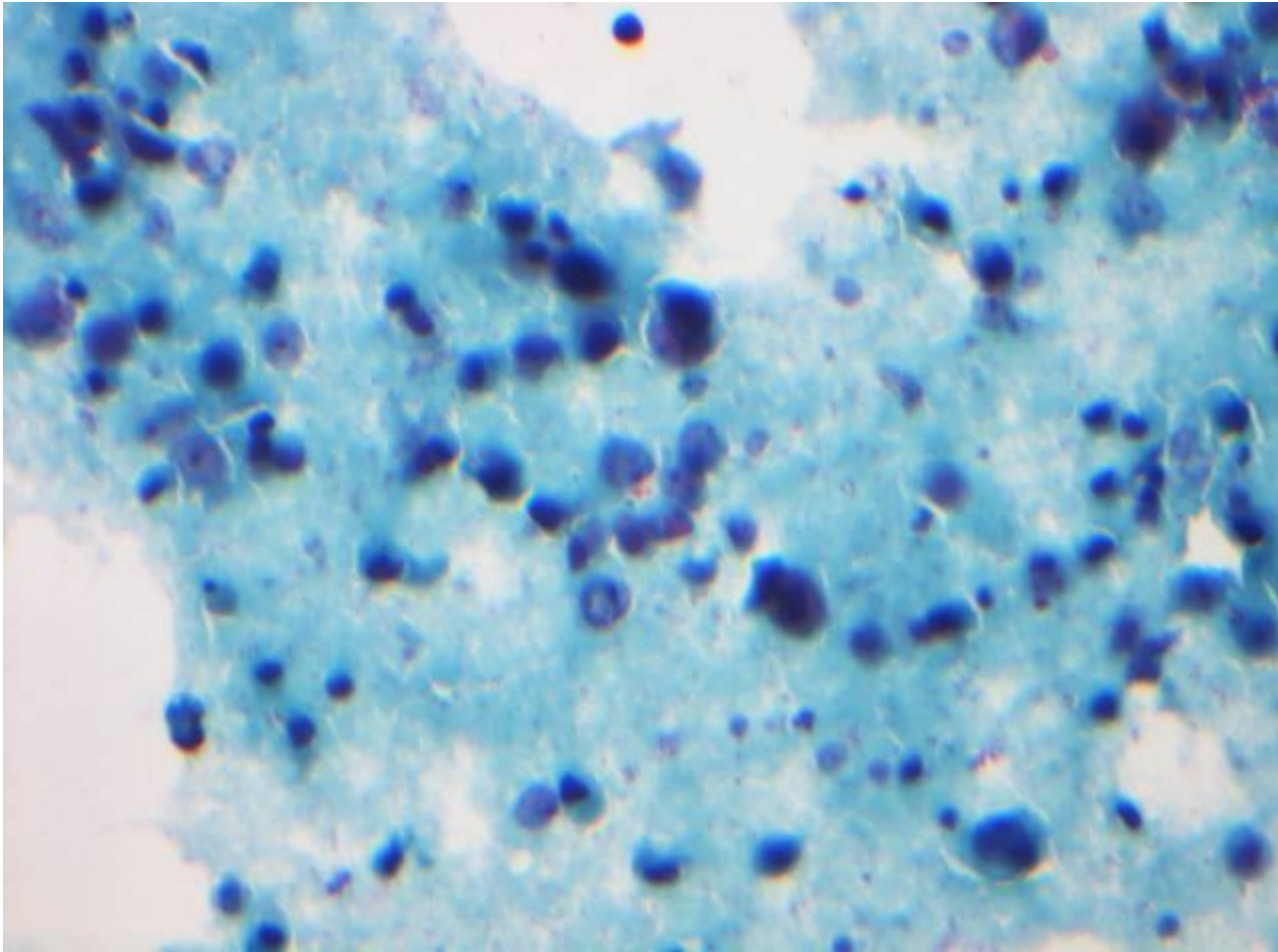
Marts 2012 – henv. obs. blærecancer (400x)



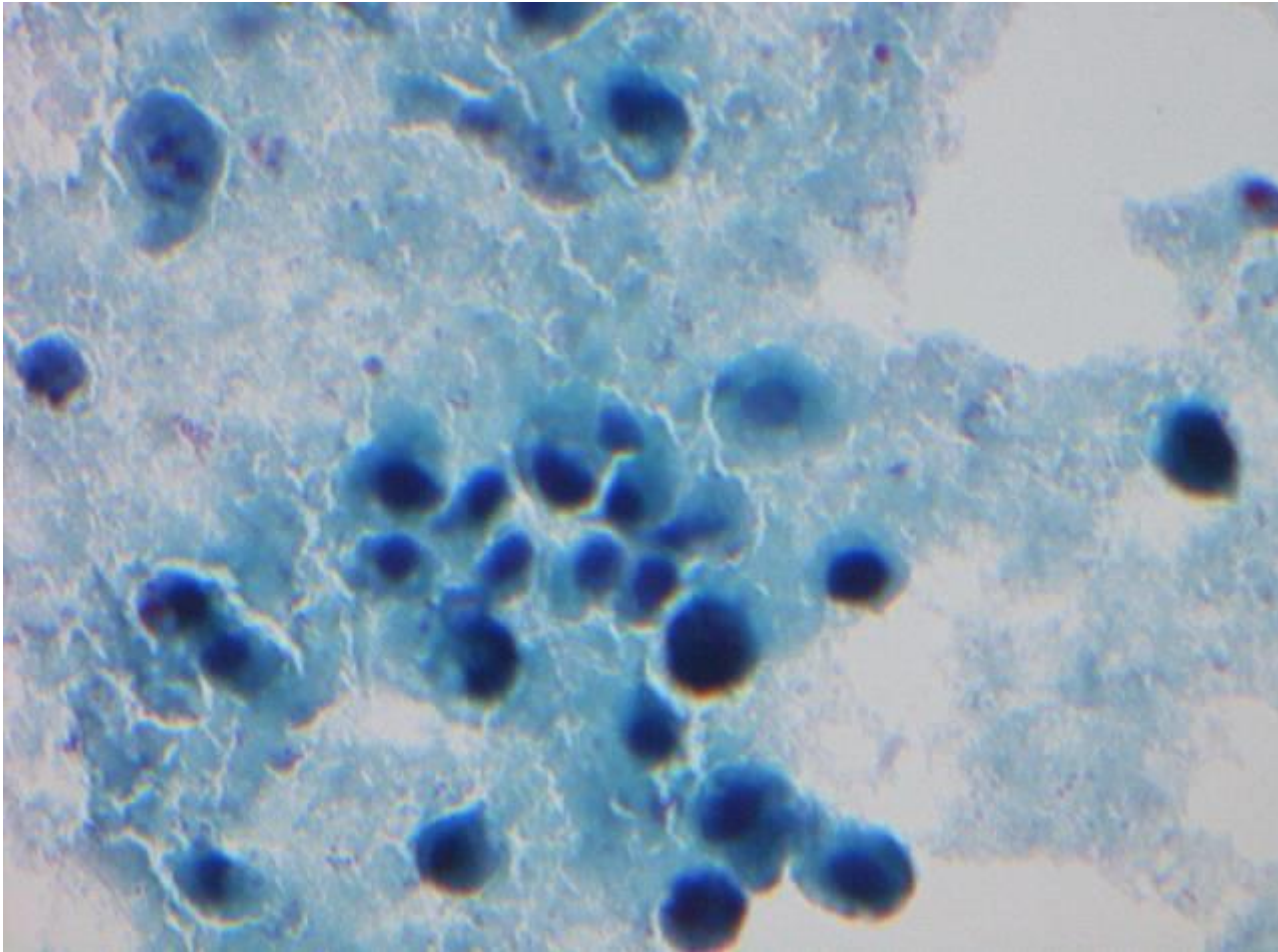
Marts 2012 – henv. obs. blærecancer (40x)



November 2012 – henv. Blæreepolypper (200x)



November 2012 – henv. Blæreepolypper (400x)

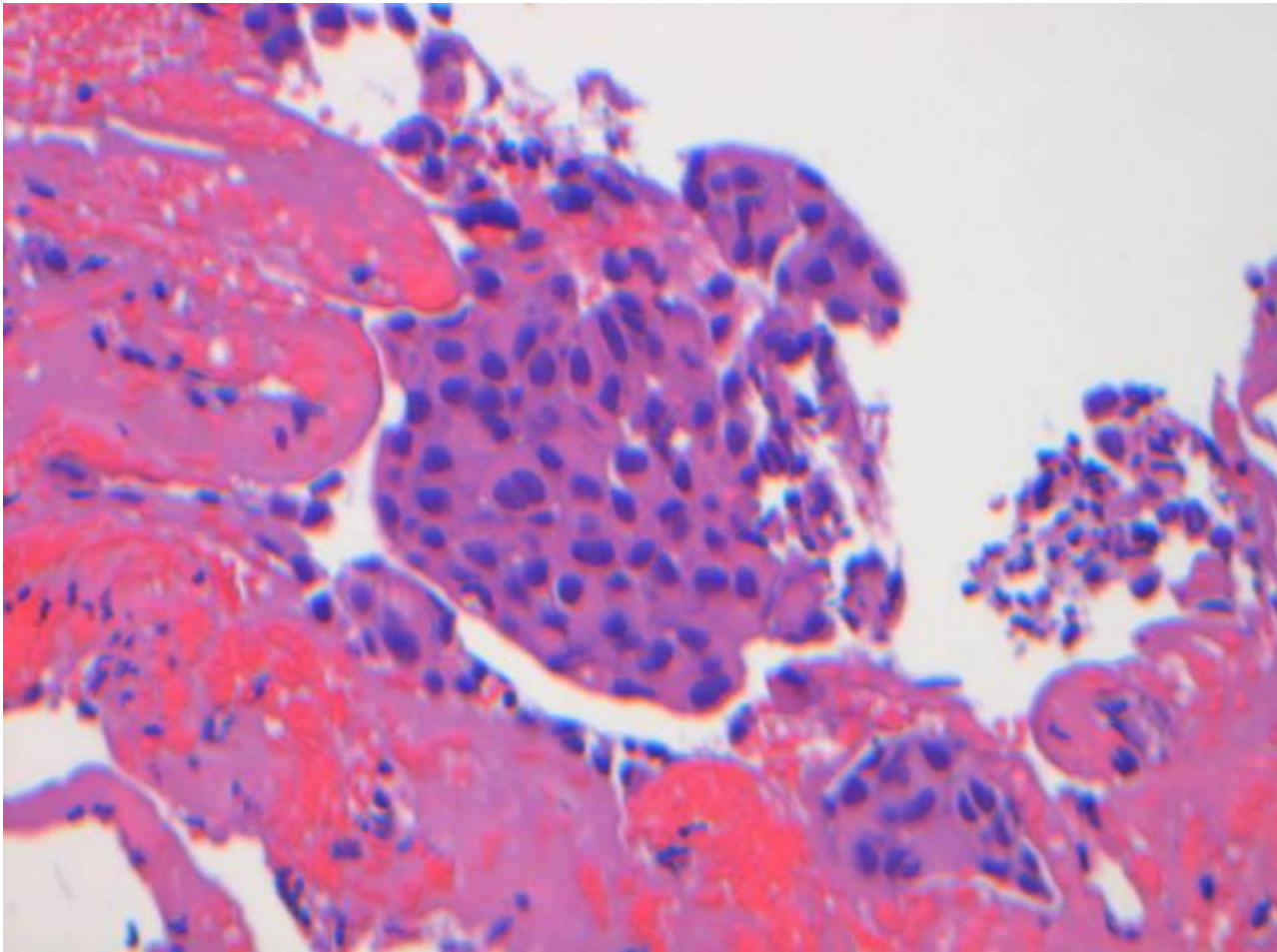


Diagnose?

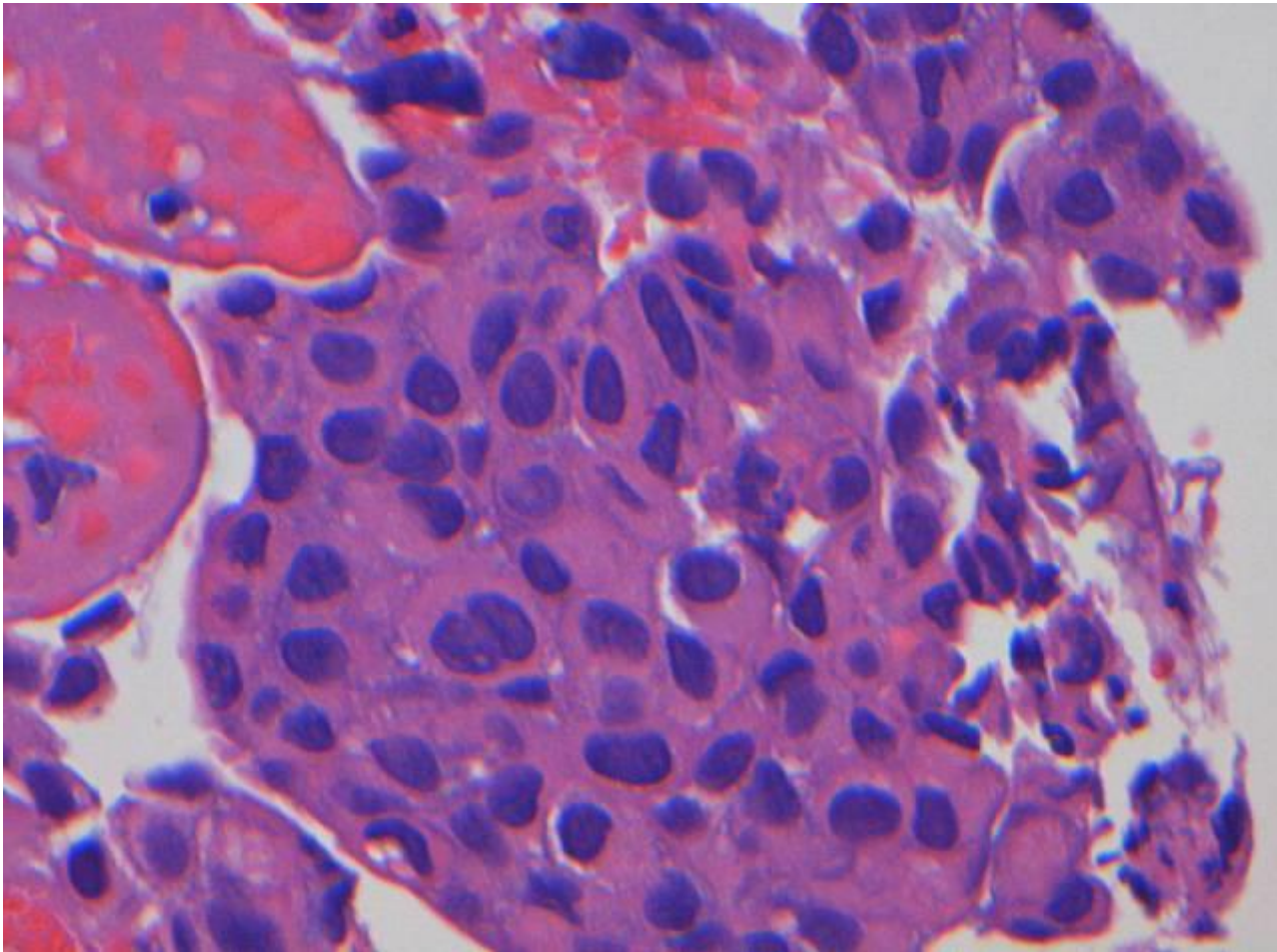
Malignitetssuspekterte celler

- Kunne der stilles en mere præcis diagnose?

Histologisk opfølgning november 2012 med urotelialt carcinom (200x)



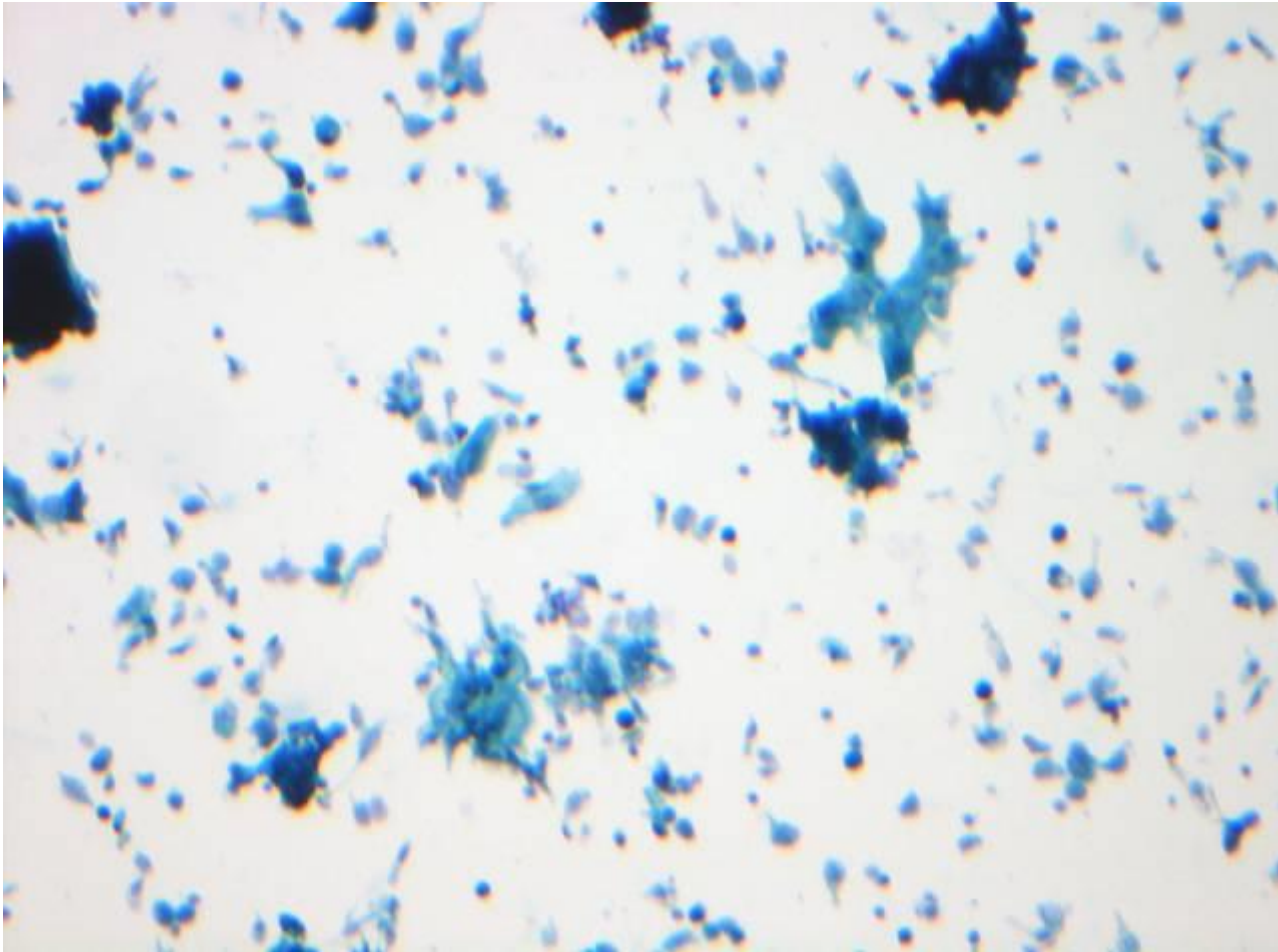
Histologisk opfølgning november 2012 med urotelialt carcinom (400x)



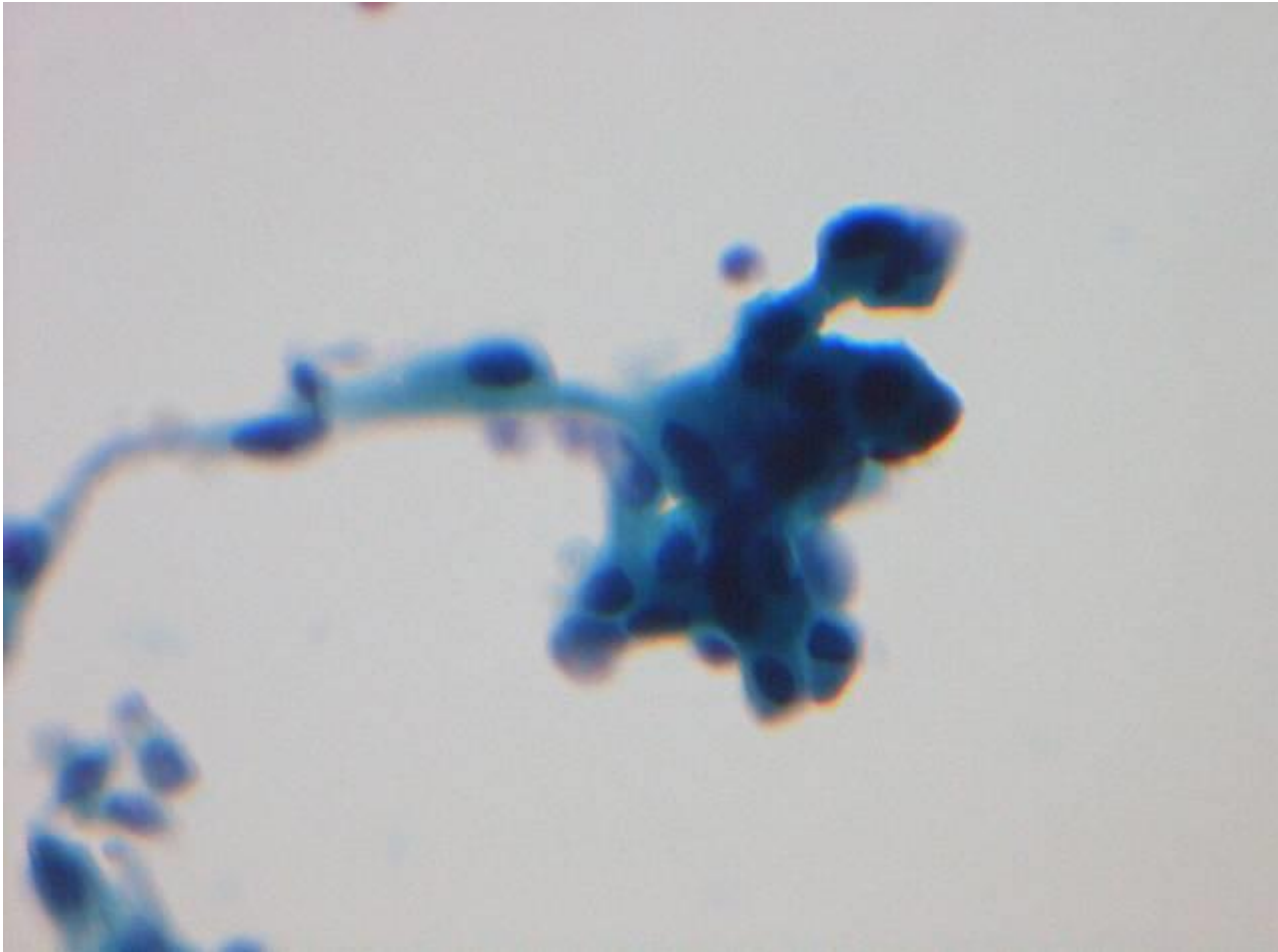
Case 2

- Mand 71 år
- Kendt med dysplasi og atypi i histologi og cytologi i juni 2006
- Blærecancer i histologi i sep. 2006
- Normal histologi i jan. 2009

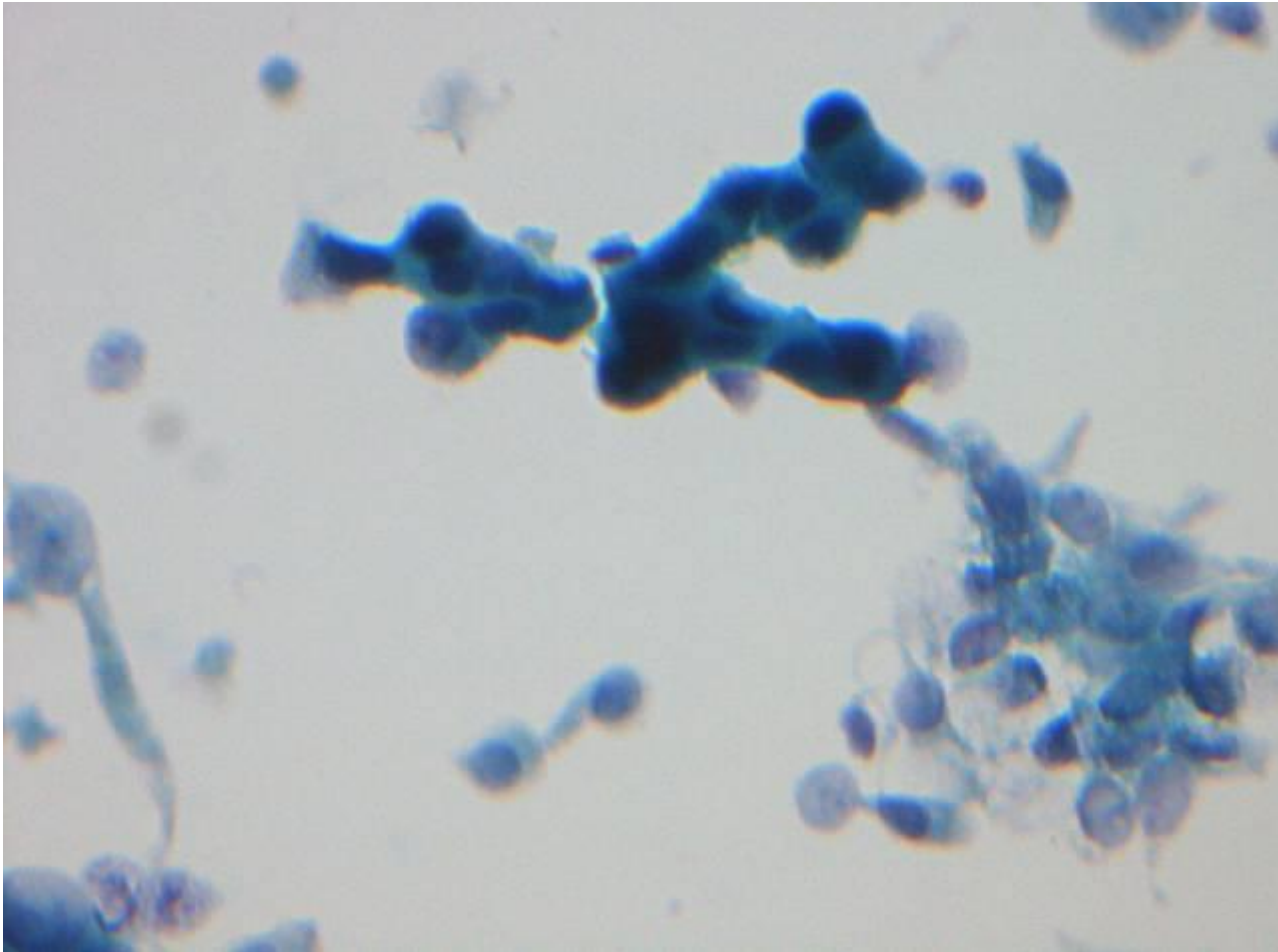
September 2012 – henv. Obs. Blærepolyp (10x)



September 2012 – henv. Obs.
Blærepolyp (10x)



September 2012 – henv. Obs. Blærepolyp (10x)

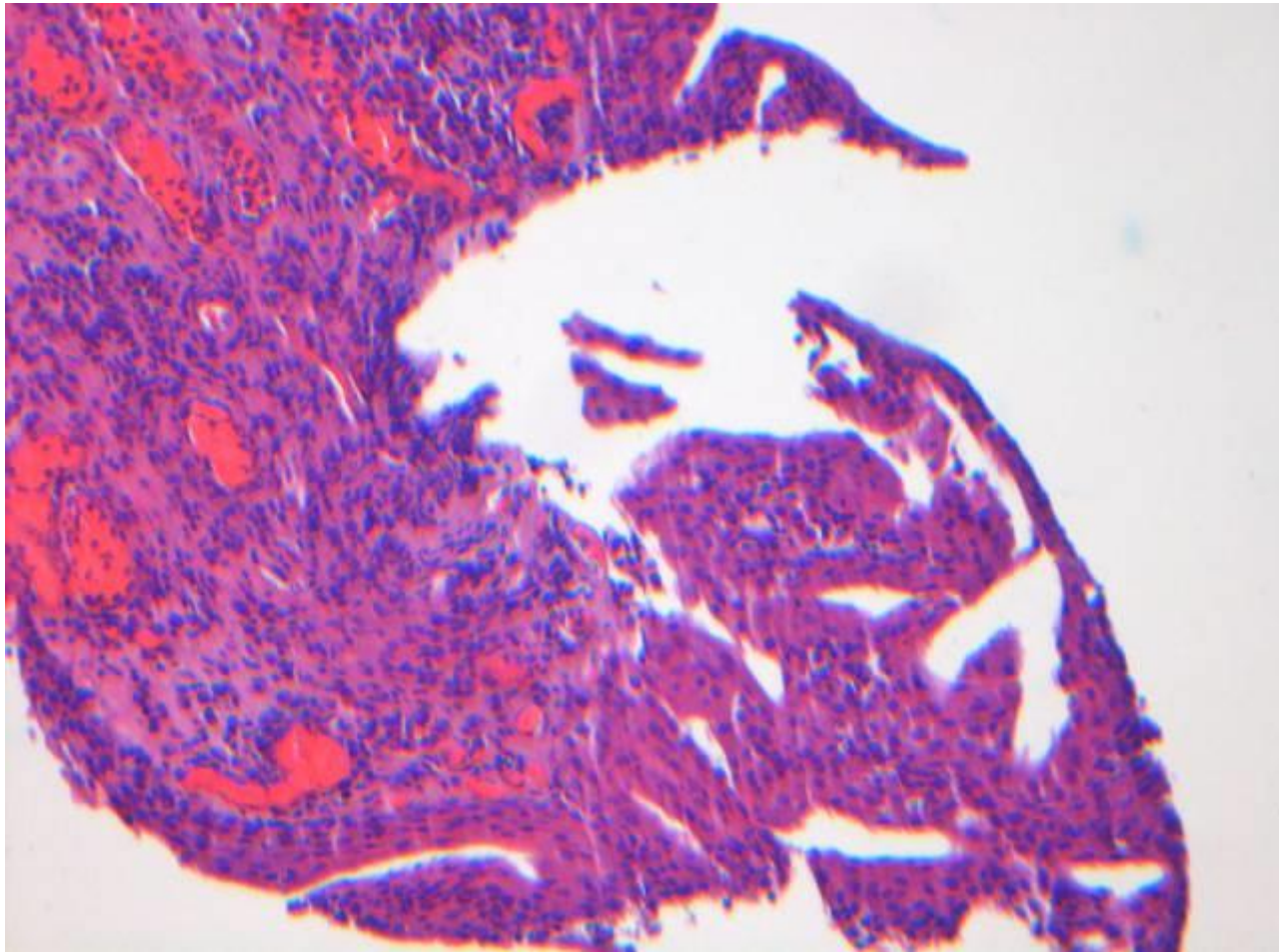


Diagnose?

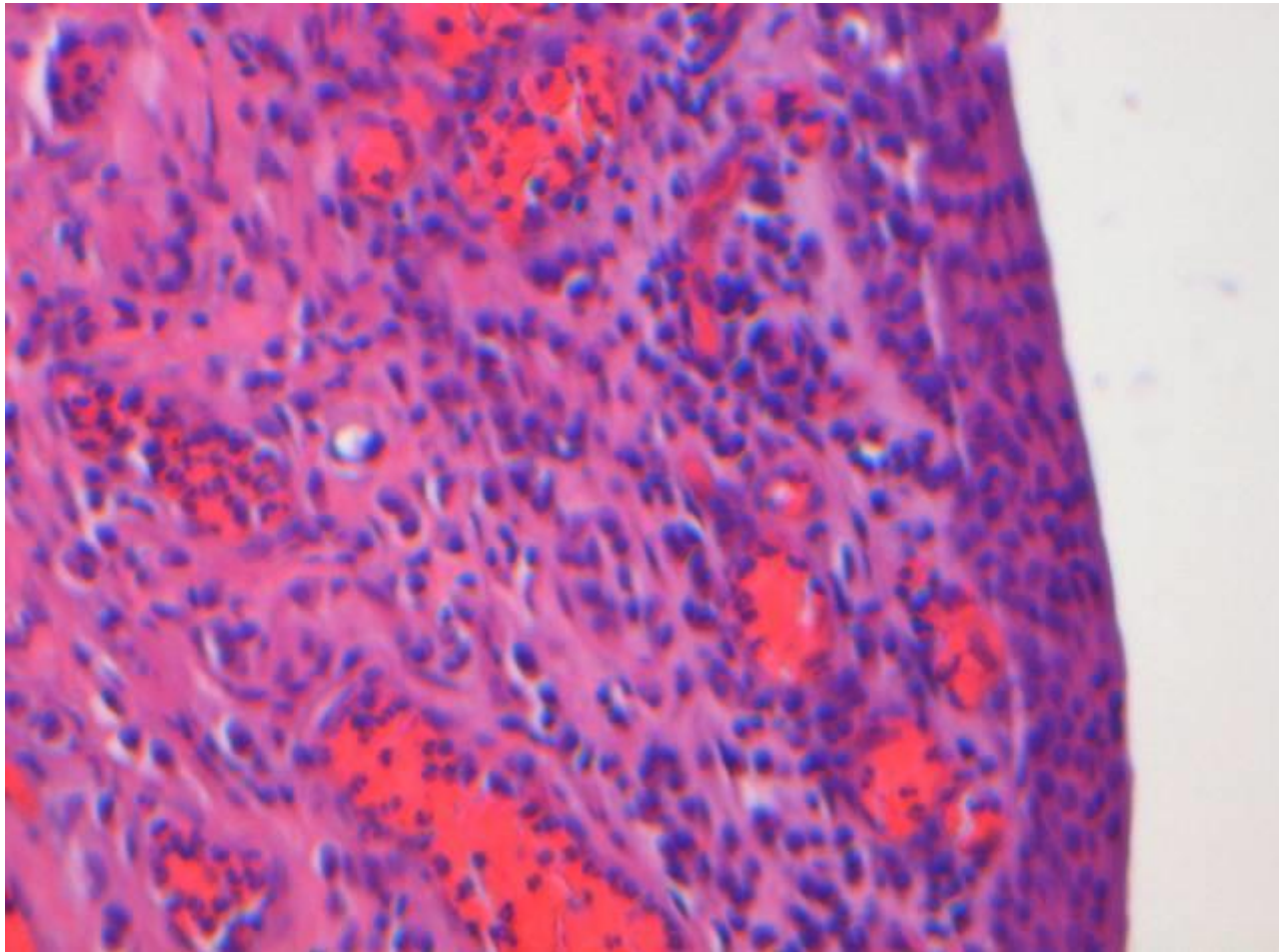
Malignitetssuspekter celler

Kunne der stilles en mere præcis
diagnose?

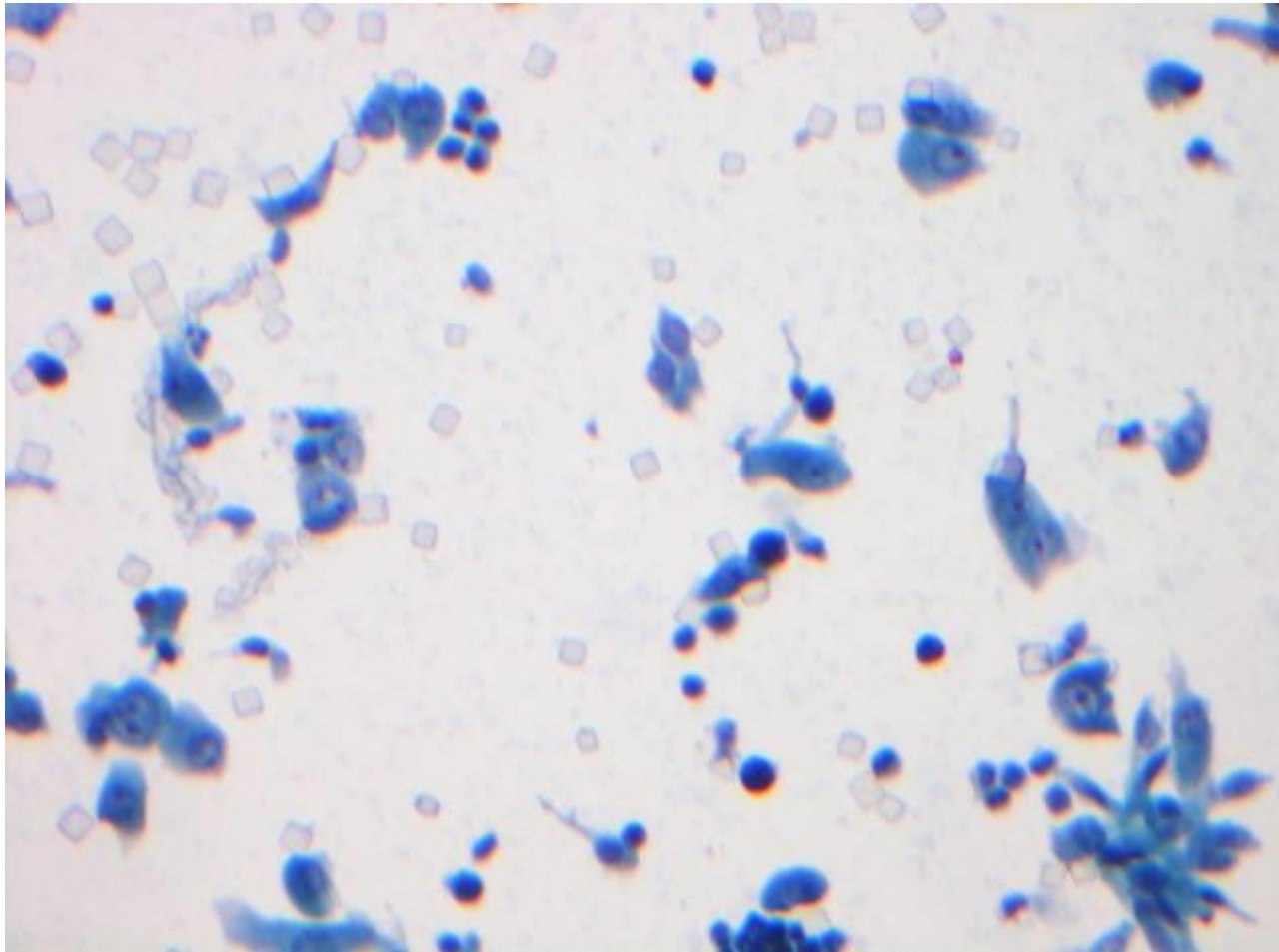
Histologisk opfølgning sep. 2012 med kronisk inflammation (10x)



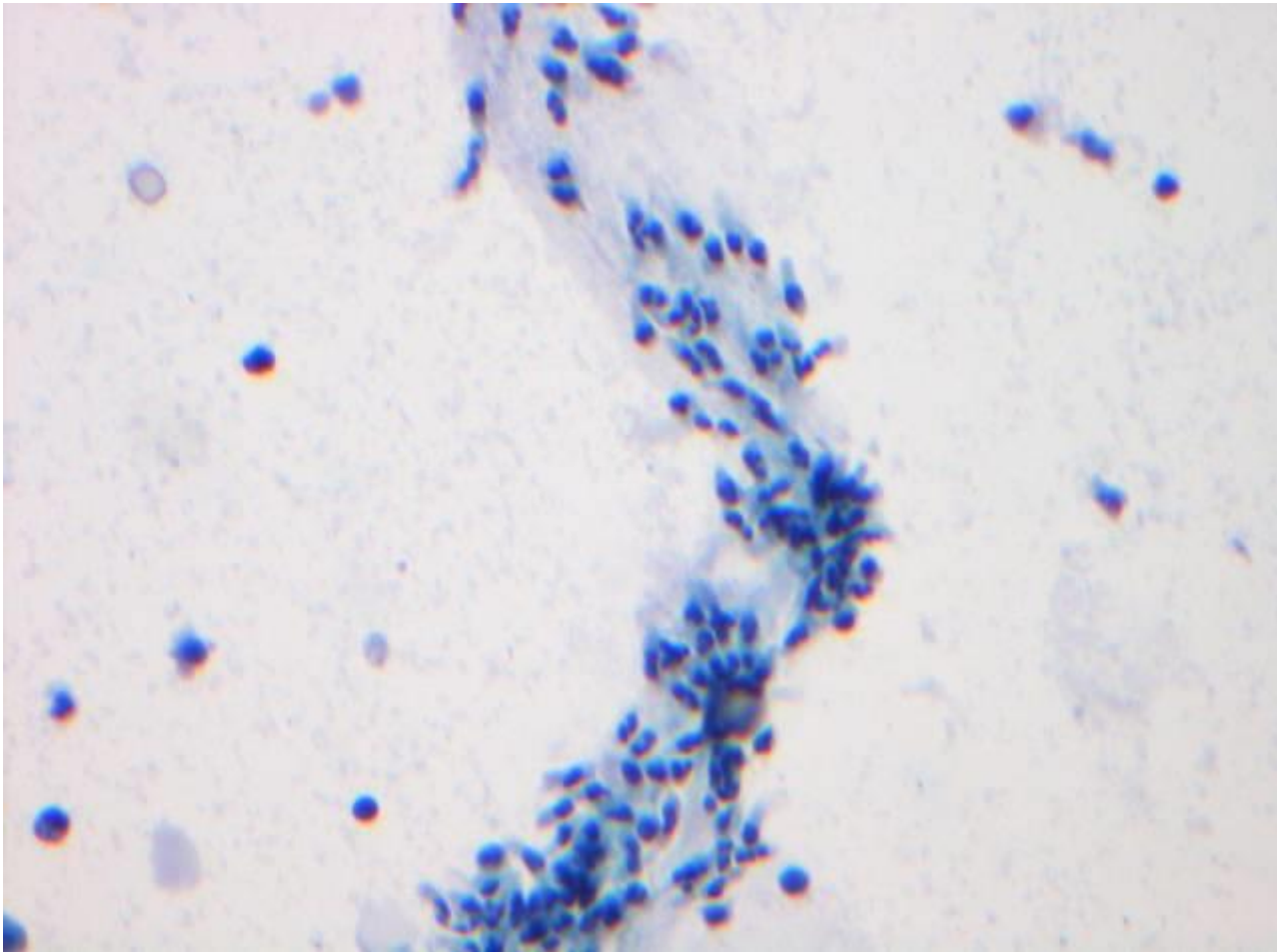
Histologisk opfølgning sep. 2012 med kronisk inflammation (20x)



Blæreskyllevand marts 2013 – normale celler - inflammation



Urin marts 2013 – normale celler inflammation



A microscopic image showing numerous small, blue-stained bacterial cells scattered across a light, off-white background. The cells vary in size and shape, some appearing as small dots while others are more elongated or clustered. The staining is a vibrant blue, contrasting sharply with the pale background.

Tak for
opmærksomheden