

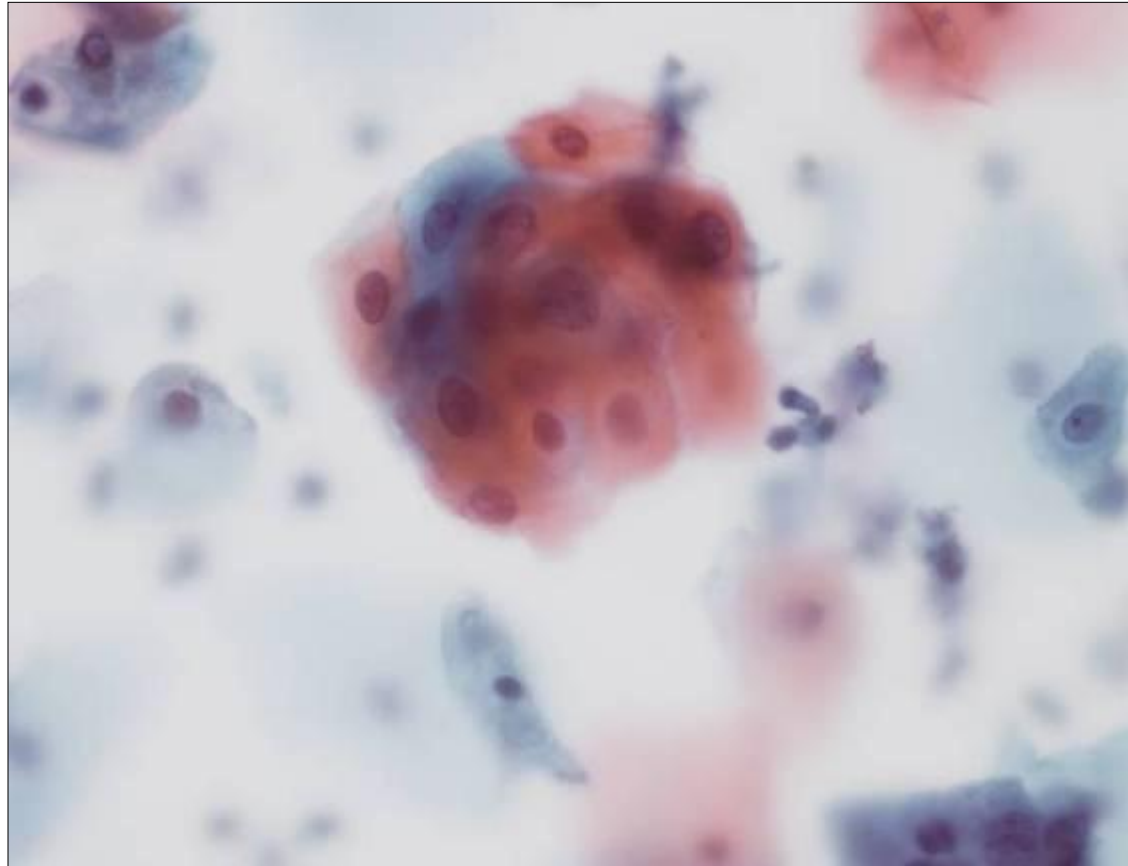


månedens case

Januar 2012

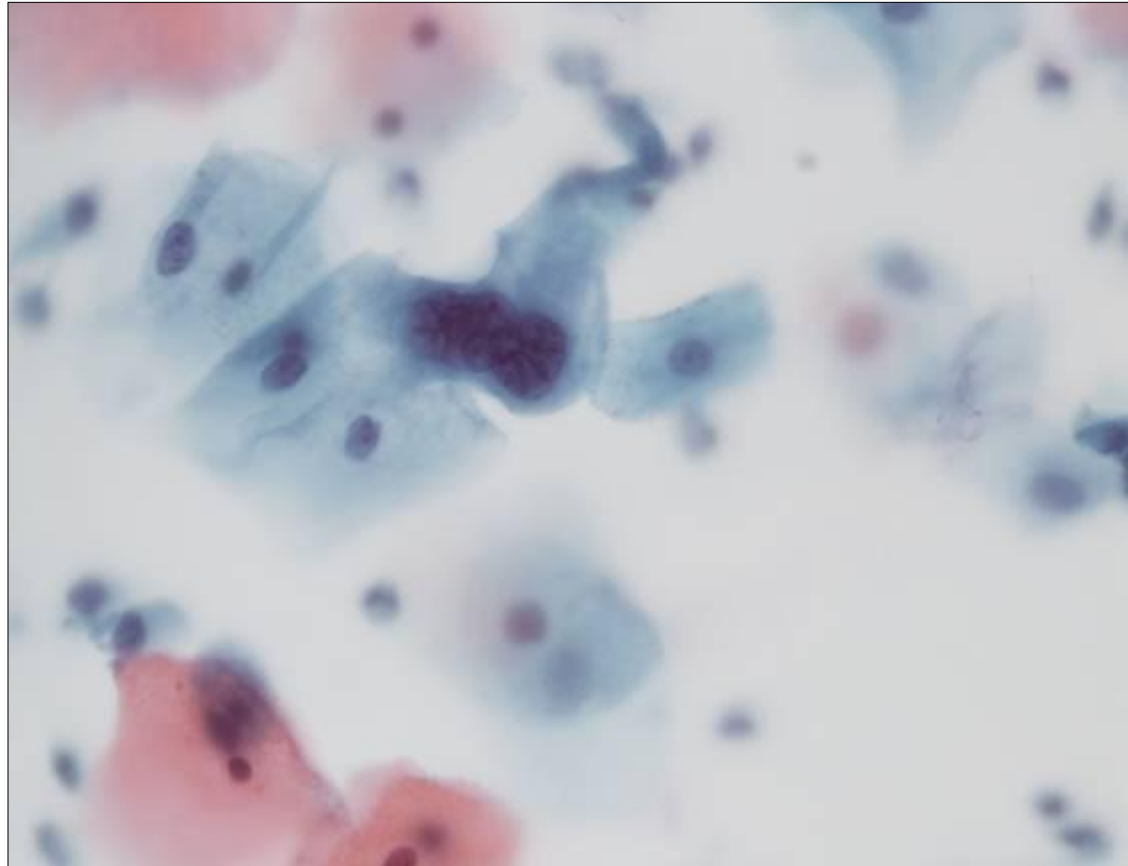
Cervixcytologisk prøve (SurePath)
27 årig kvinde. Ingen kliniske
oplysninger. Tidligere normale celler

Månedens case



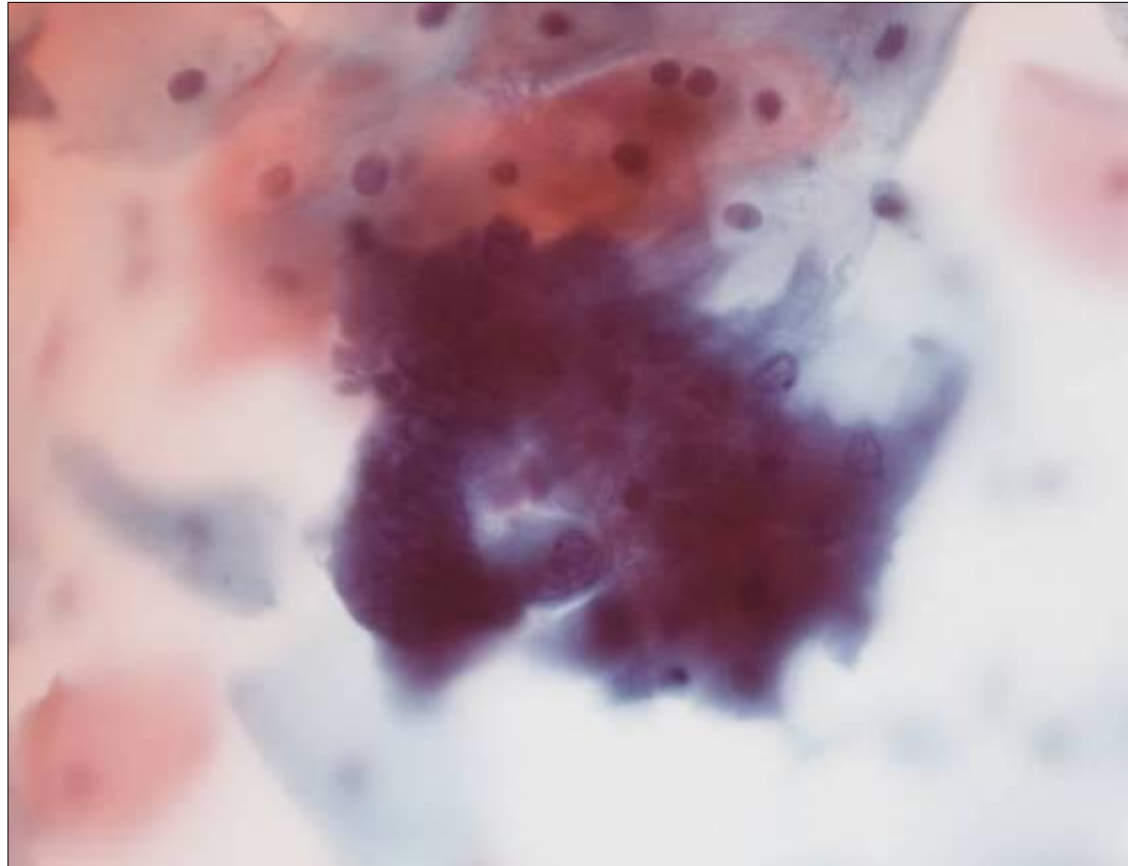
Case Århus Universitetshospital,
Pia Fursted og Marianne Schou

Månedens case



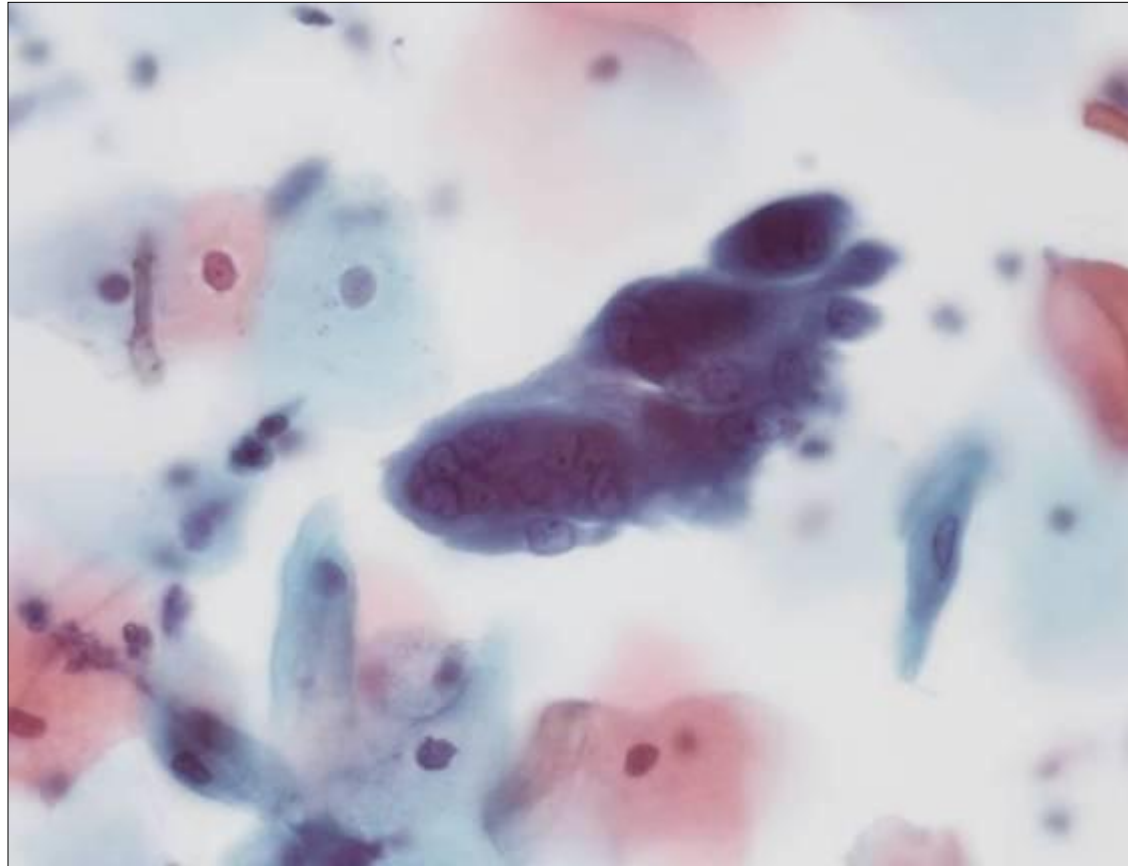
Case Århus Universitetshospital,
Pia Fuursted og Marianne Schou

Månedens case



Case Århus Universitetshospital,
Pia Fuursted og Marianne Schou

Månedens case - Diagnose?

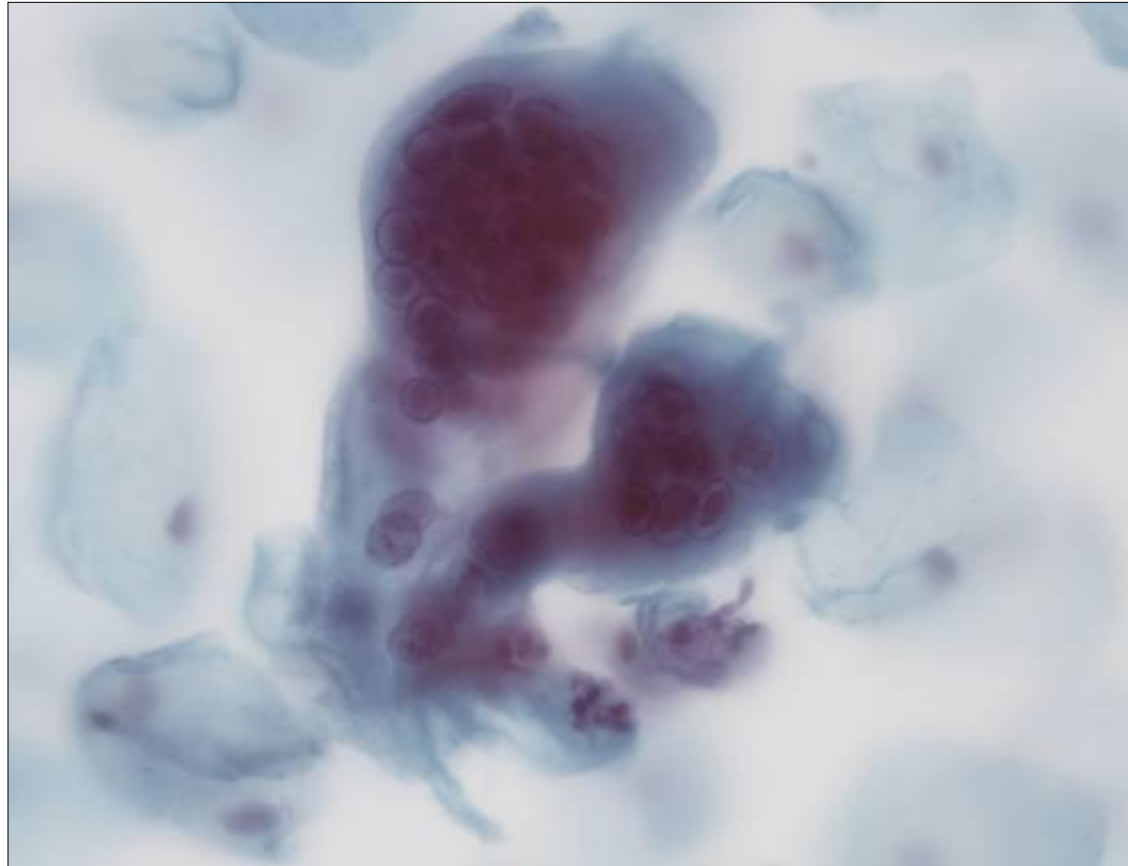


Case Århus Universitetshospital,
Pia Fursted og Marianne Schou

Diagnose

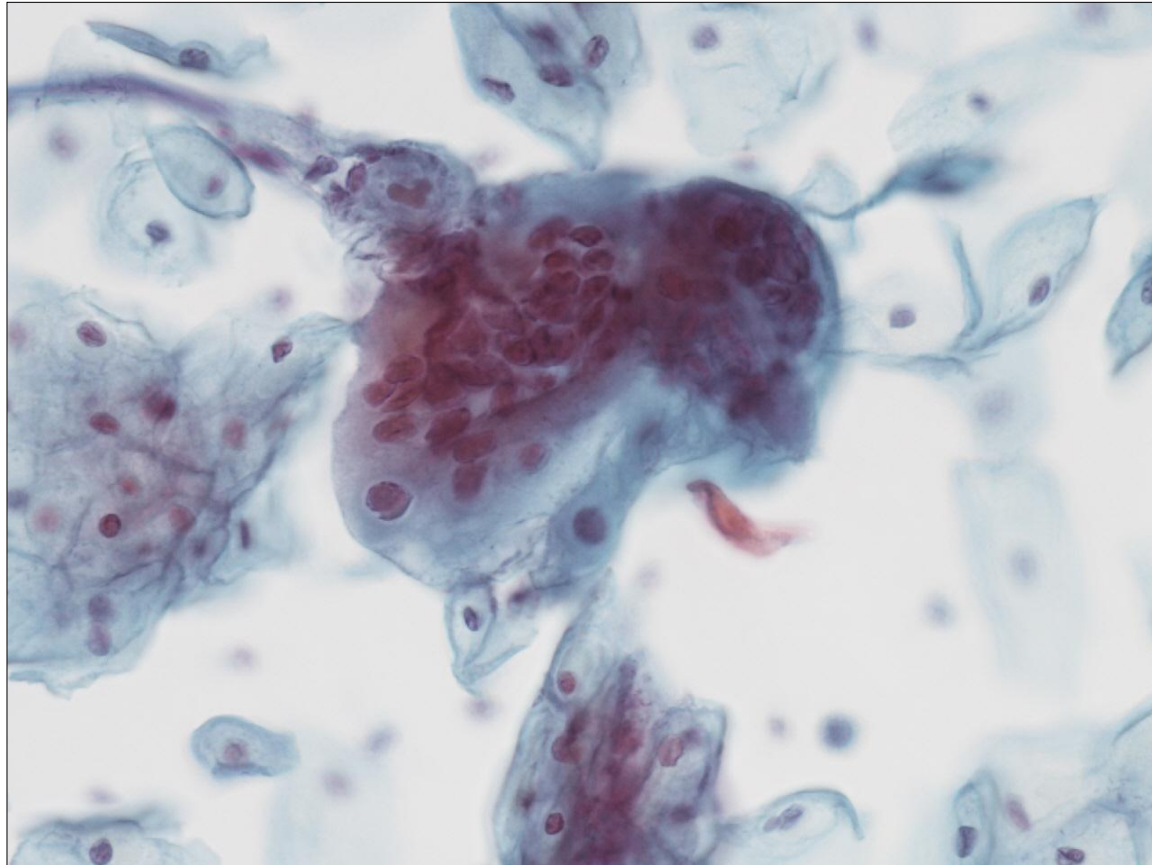
- Normale celler. Reaktive celleforandringer
- Differentialdiagnose herpes virus forandringer
- Multinukleære cylinderepitelceller. Kernernemoulding, optrukne kernemembran ligner matglas, der er nukleoler i kernerne ikke inklusionslegemer.
- Se næste slide

Herpes virus



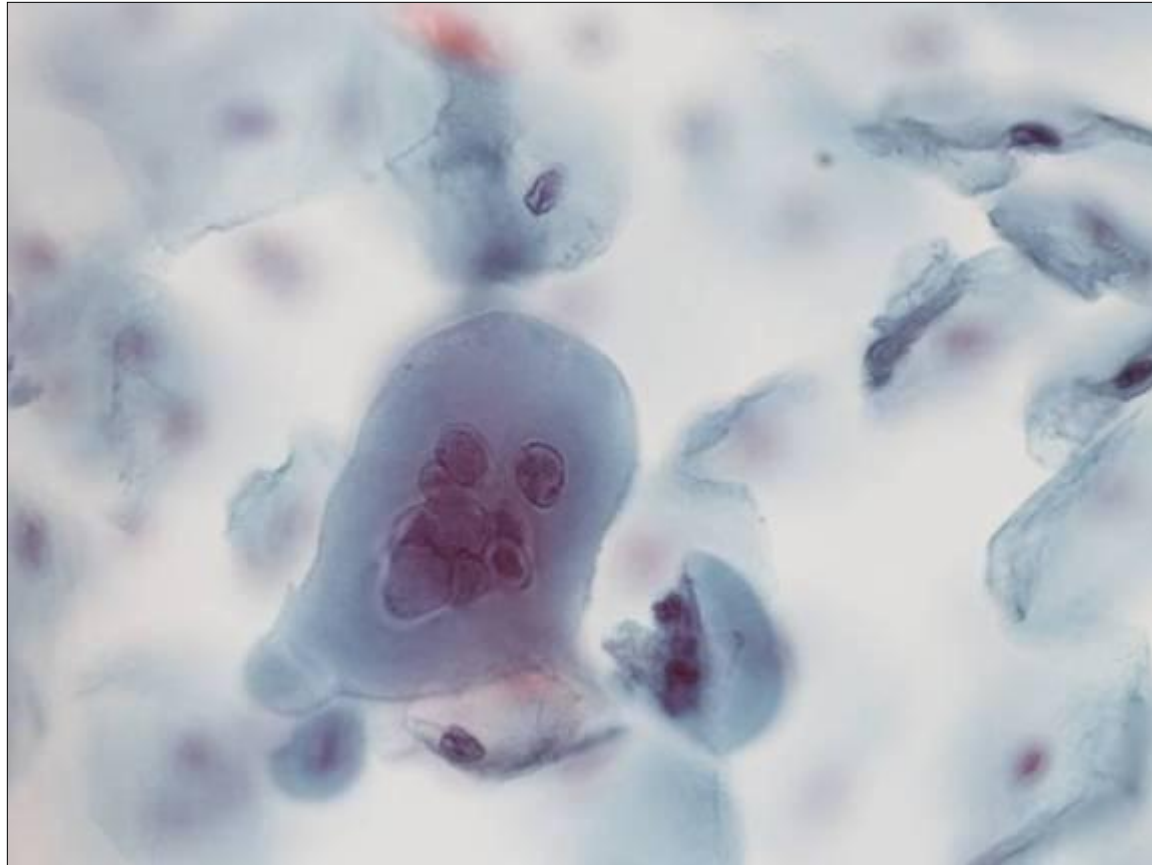
Case Århus Universitetshospital,
Pia Fursted og Marianne Schou

Herpes virus



Case Århus Universitetshospital,
Pia Fursted og Marianne Schou

Herpes virus



Case Århus Universitetshospital,
Pia Fursted og Marianne Schou