



Mikroskopi af portiobiopsier

*Doris Schledermann
Sygehus Lillebælt, Vejle Sygehus*

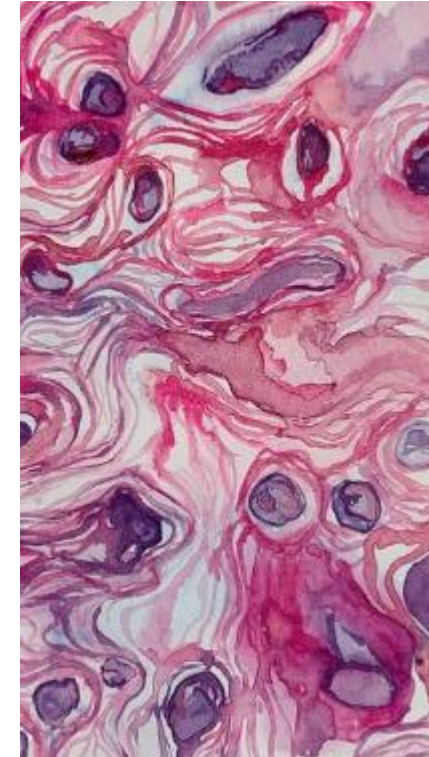


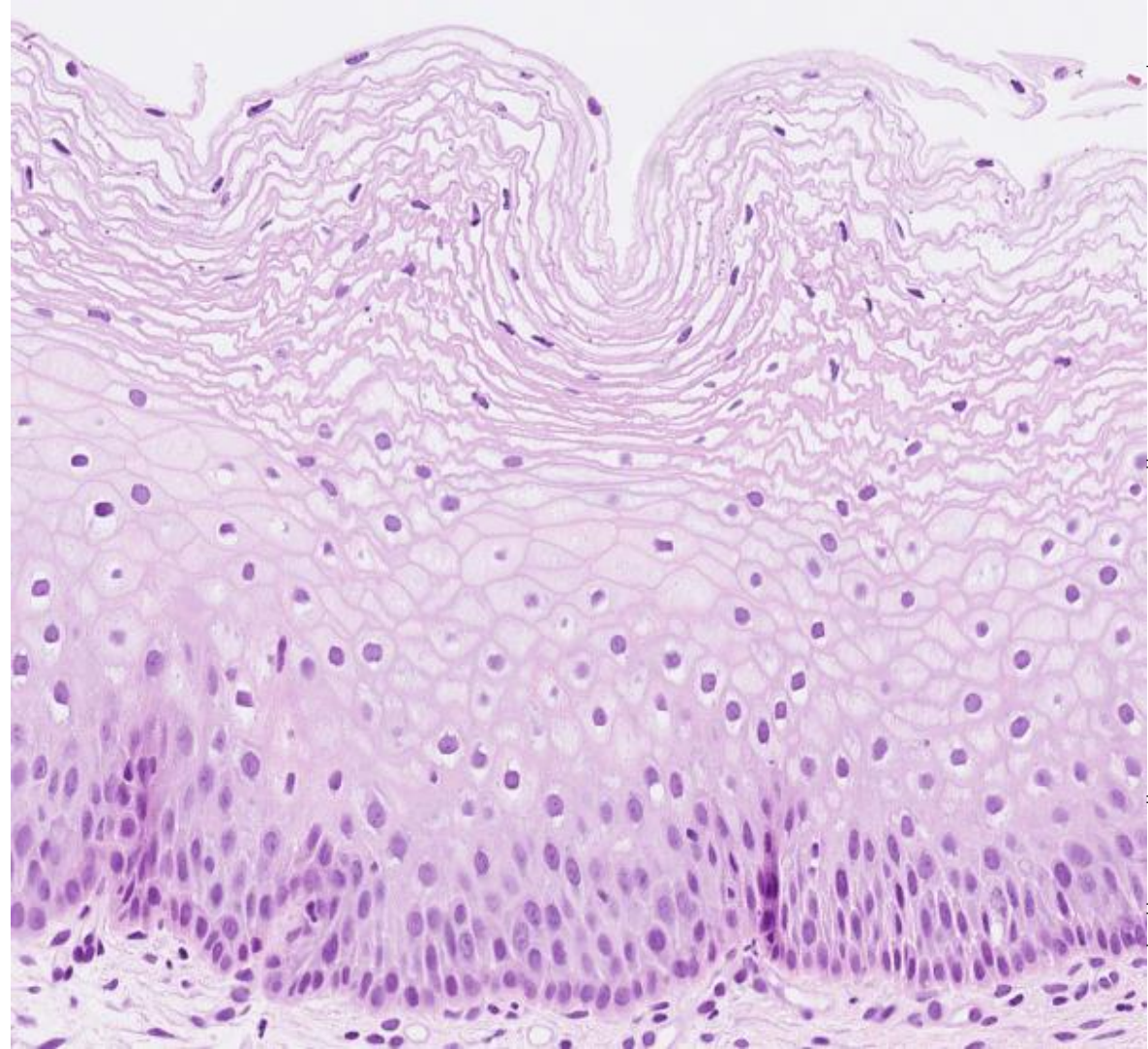
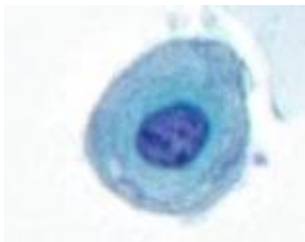
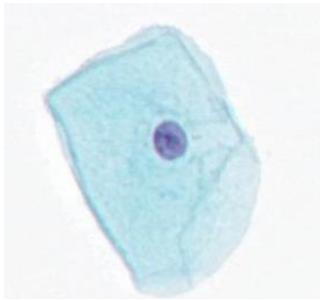
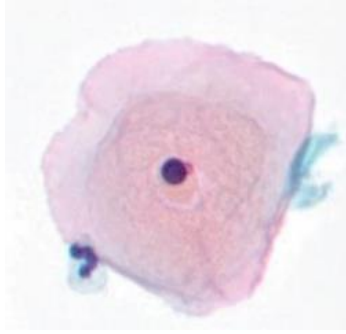
Emner:

- Almen histologi (Gitte Woldum)
- Sentinel node (Pia Wirenfeldt Staun)
- Ductus deferens (Johanna Elversang)
- Colonpolypper (Mikkel Eld)
- Portiobiopsier (Doris Schledermann)

Kursusleder:

- Conny Egebjerg





Superficielle
cellelag

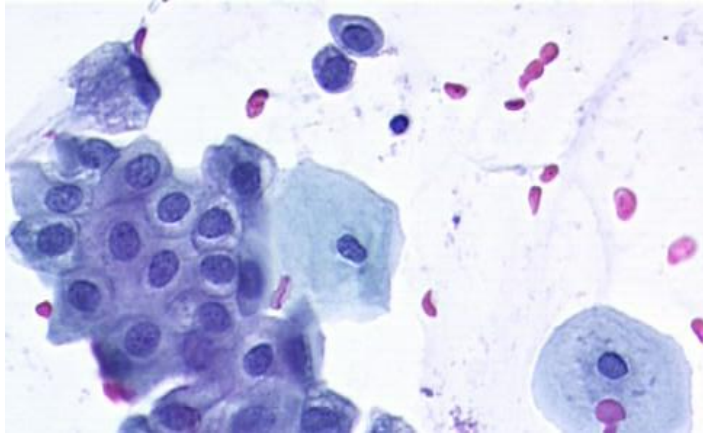
Intermediære
cellelag

Parabasale cellelag

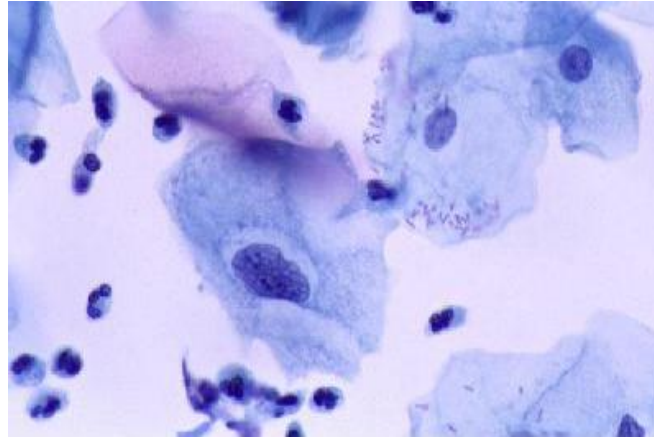
Basale cellelag

Pladeepitelceller i cervix

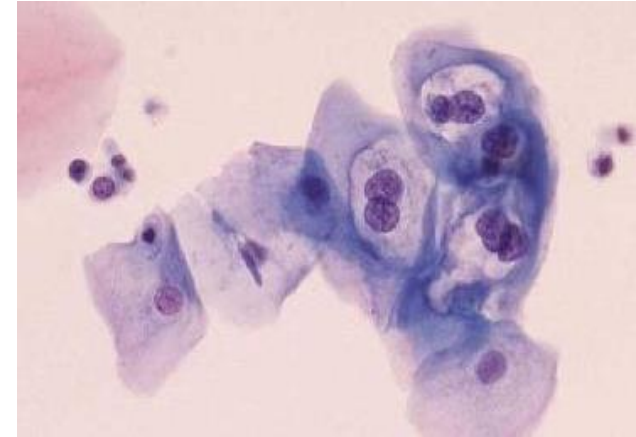
Normale pladeepitelceller



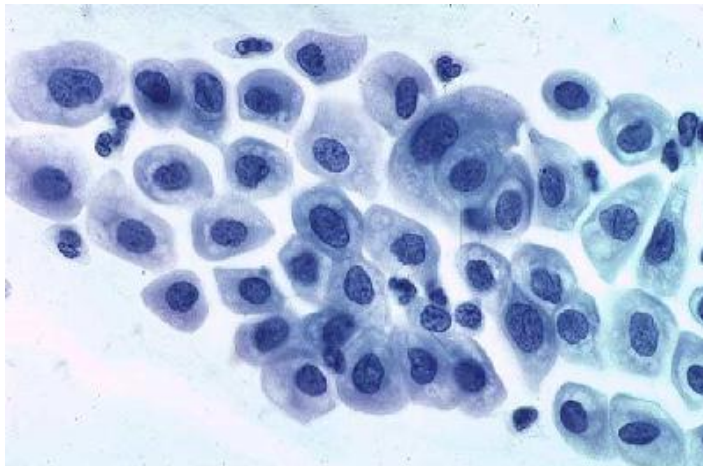
ASCUS



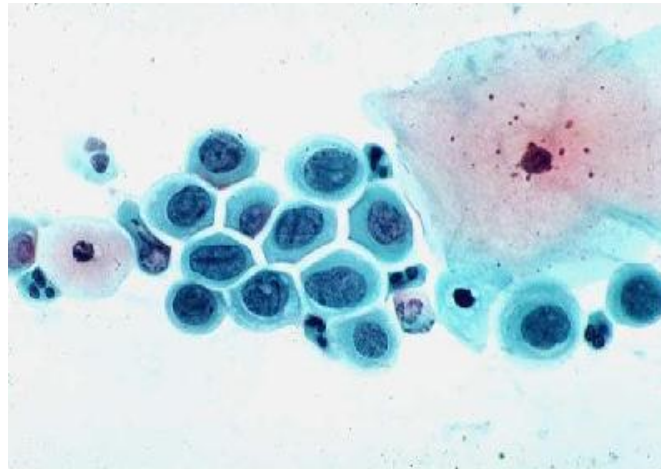
LSIL



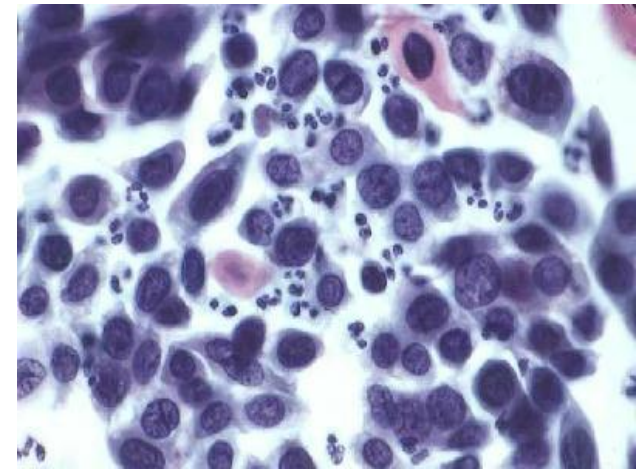
ASC-H



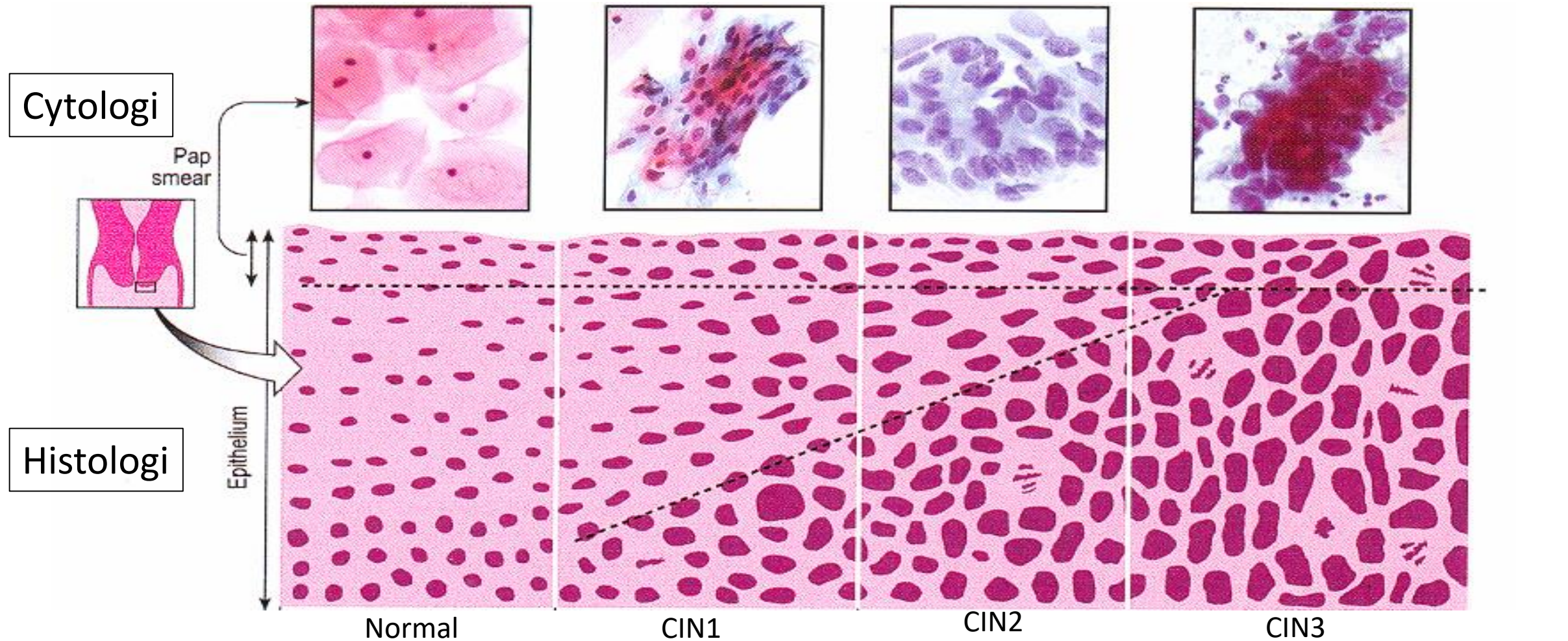
HSIL



Planocellulært karcinom

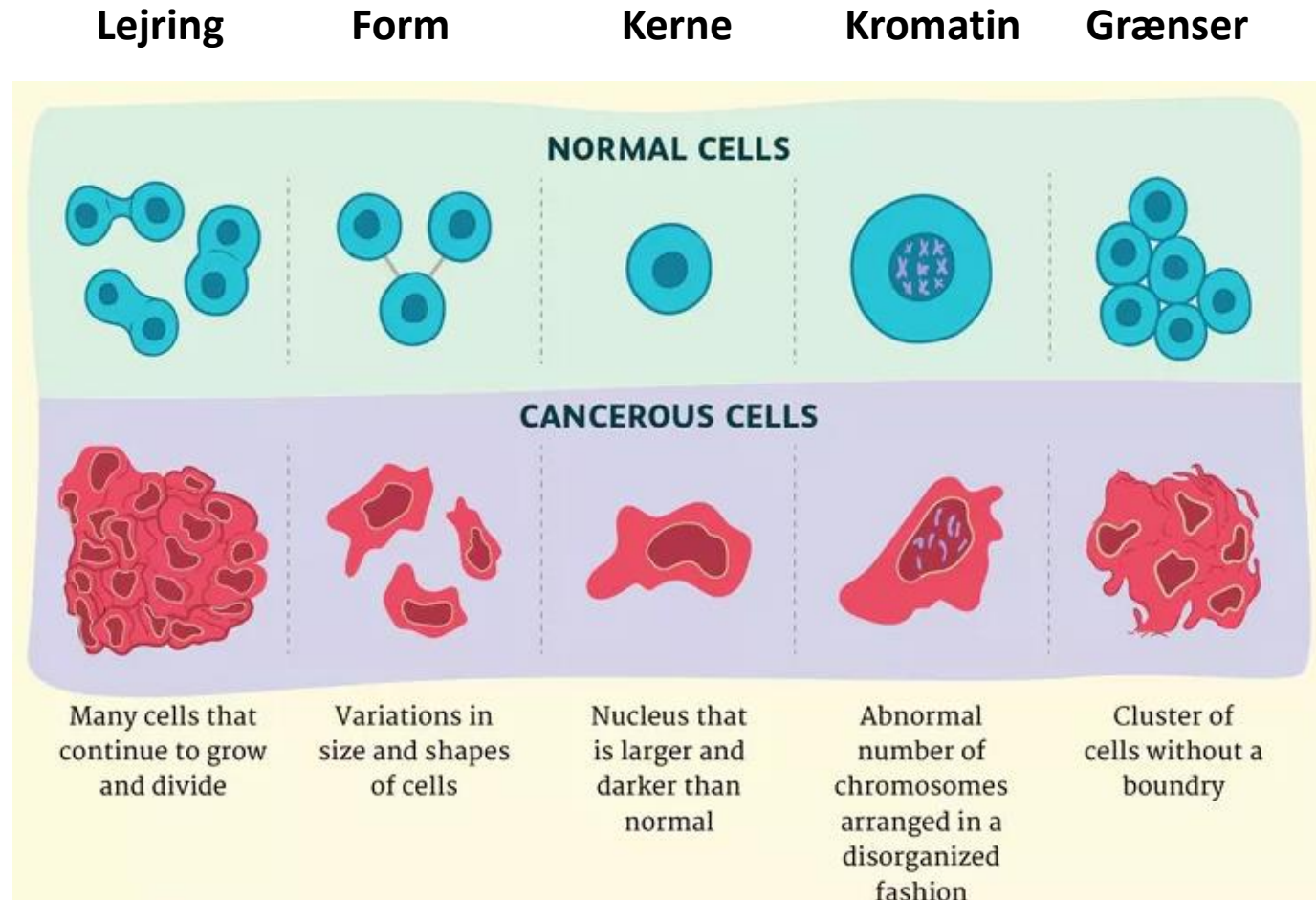


Cytologi vs. histologi

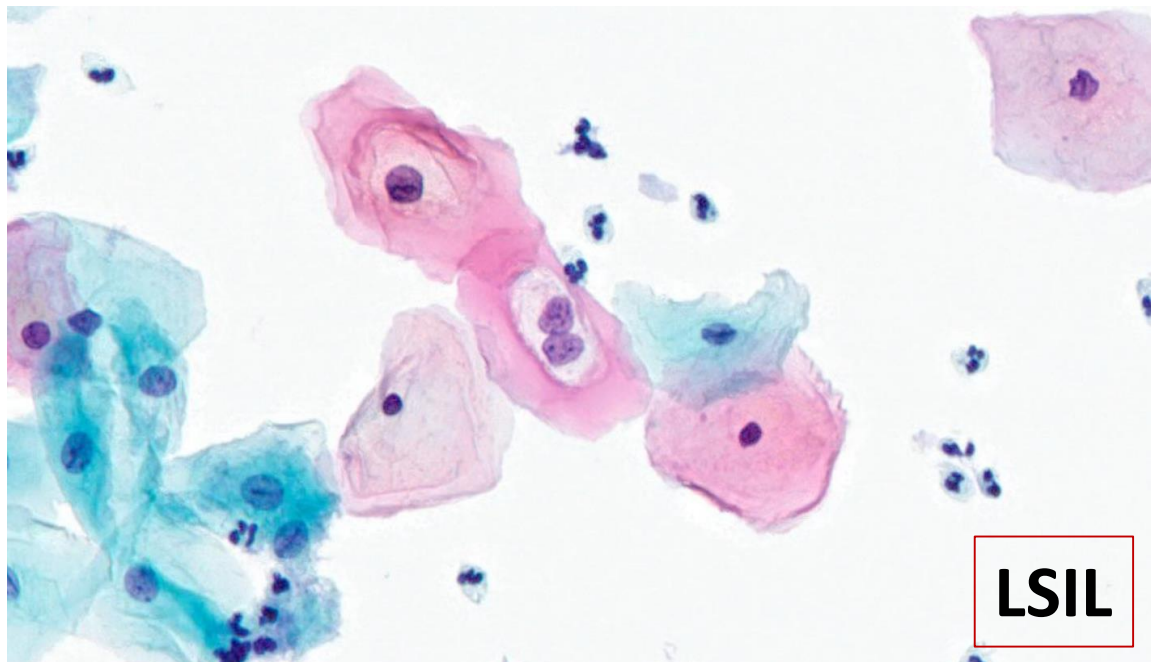
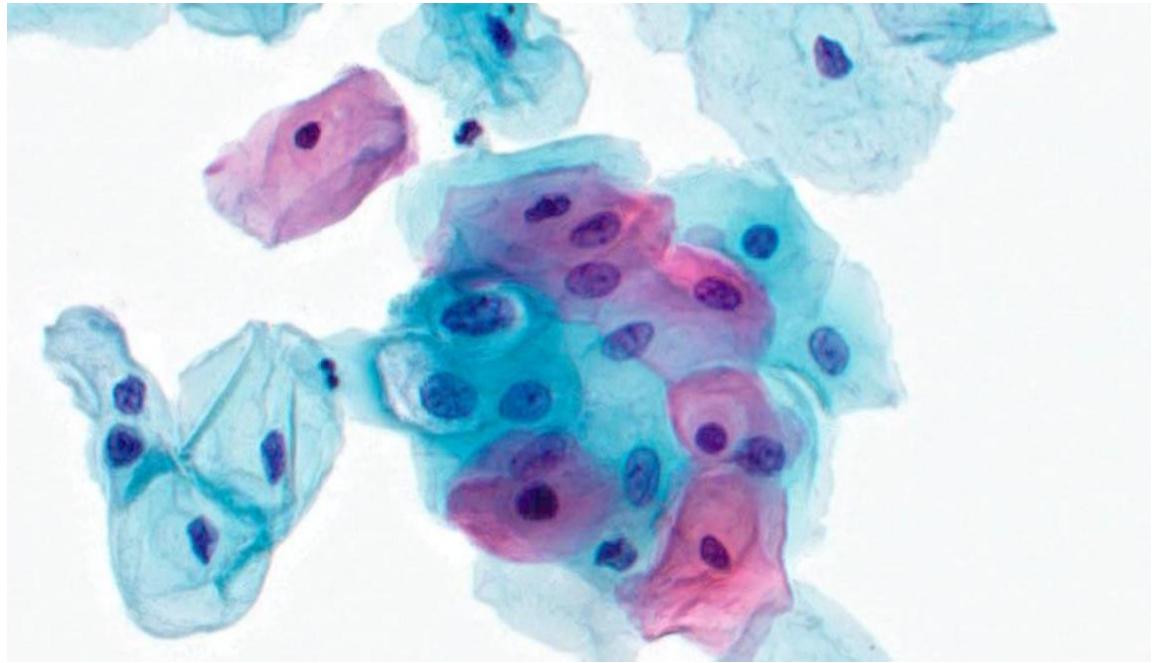
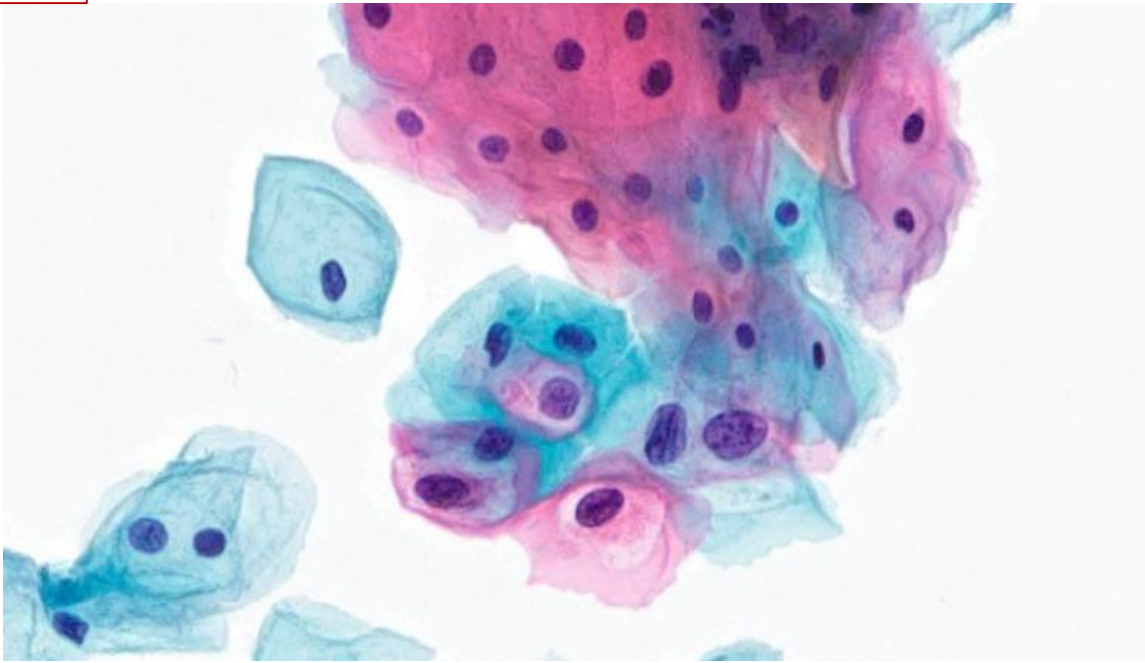


CIN = cervikal intraepitelial neoplasi

Mikroskopiske malignitetskriterer

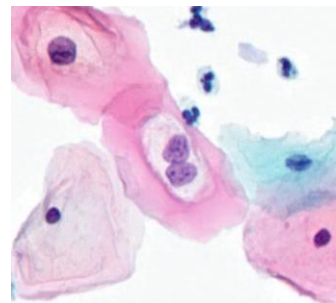
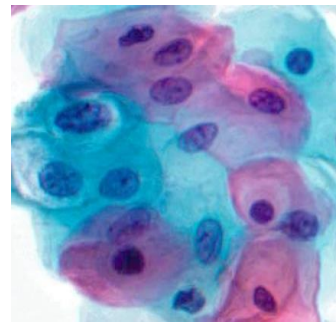
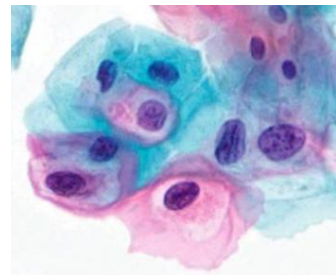
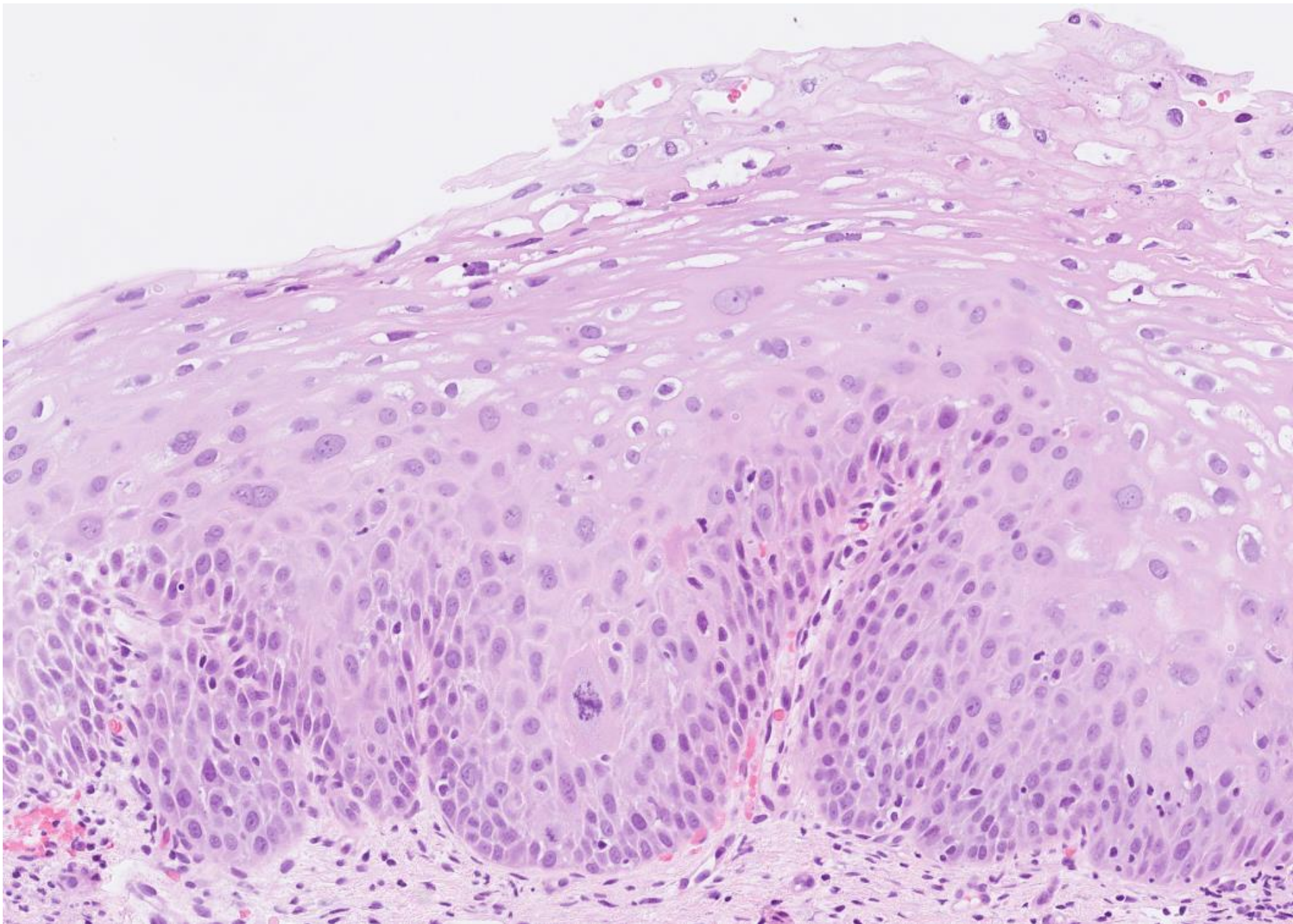


Case 1



LSIL

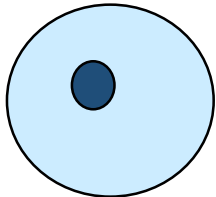
Case 1



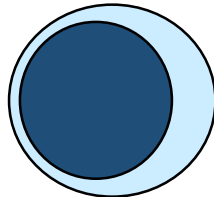
Cervikal intraepitelial neoplasi (CIN)

Fund	CIN1	CIN2	CIN3
Høj K/C	Nederste 1/3	Midterste 1/3	Øverste 1/3
Koilocyttter	+++	++	+
Atypi			
Områder med høj K/C	+	++	+++
Områder med lav K/C	+++	++	+
Oprykkede mitoser	Ja	Ja	Ja

Lav K/C



Høj K/C



Atypi:

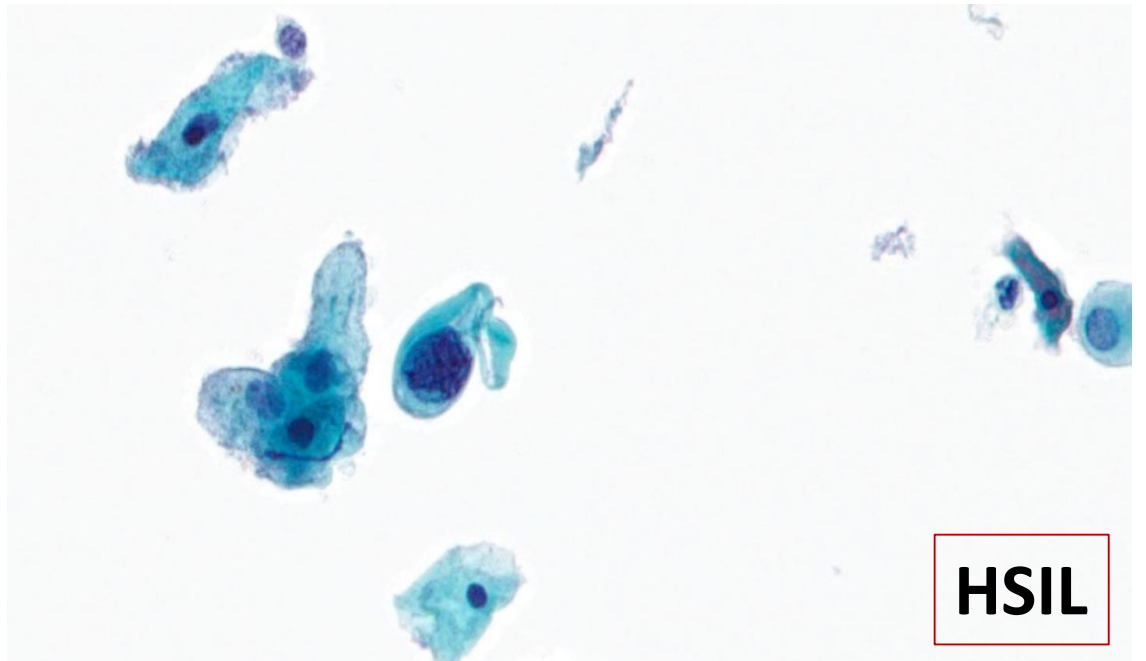
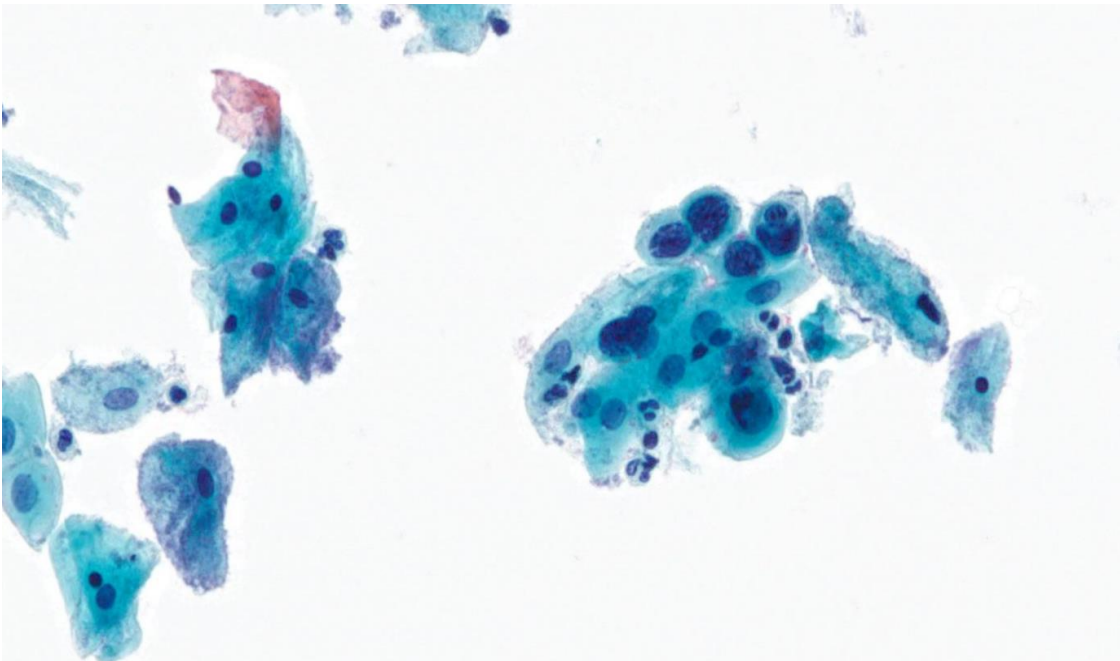
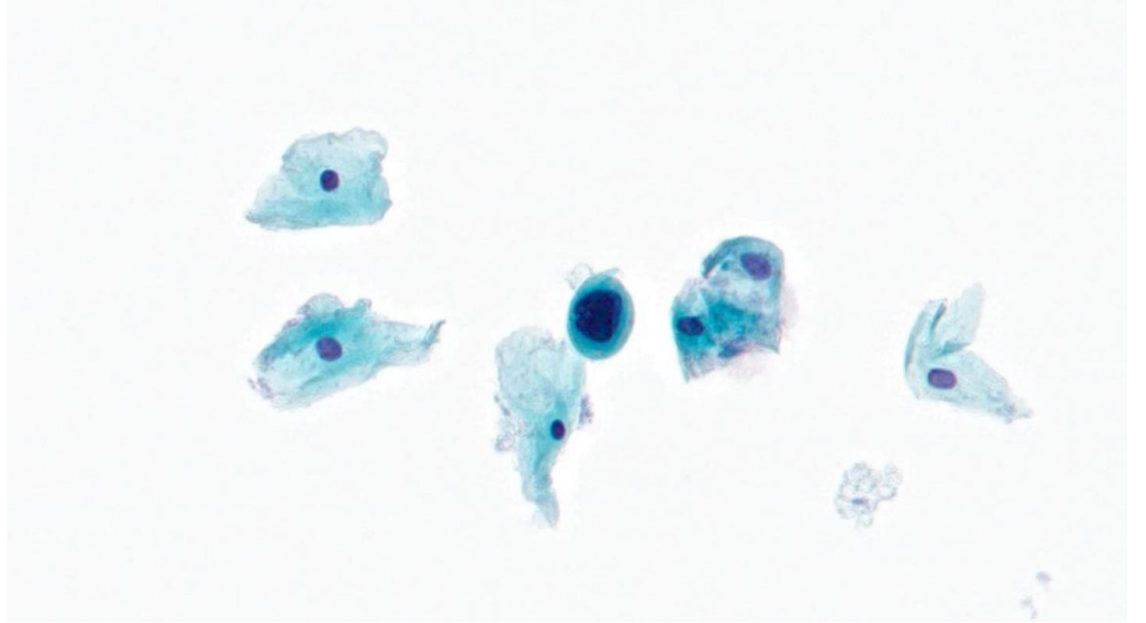
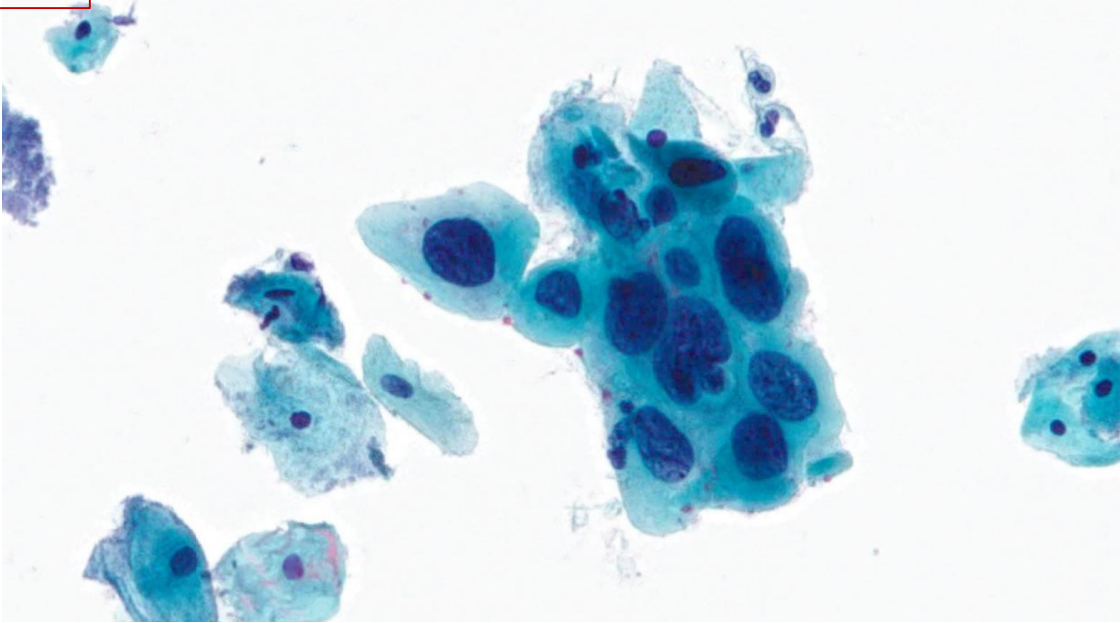
- forstørrede kerner
- irregulær kernemembran
- hyperkromasi
- tydelige nukleoler
- forøget kerne-cytoplasmaratio

Cervikal intraepitelial neoplasi grad 1 (CIN 1)



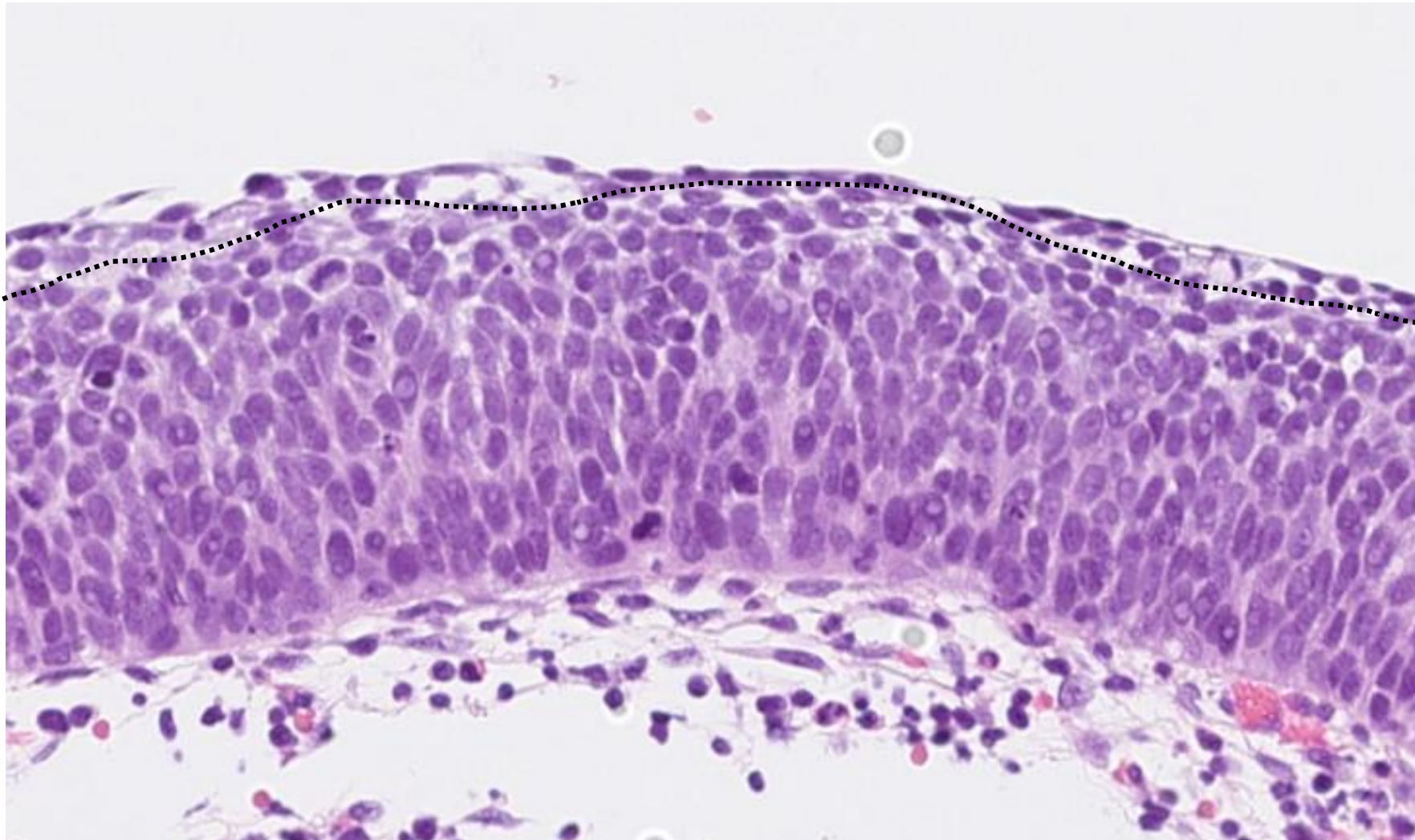
Høj K/C i basale 1/3

Case 2



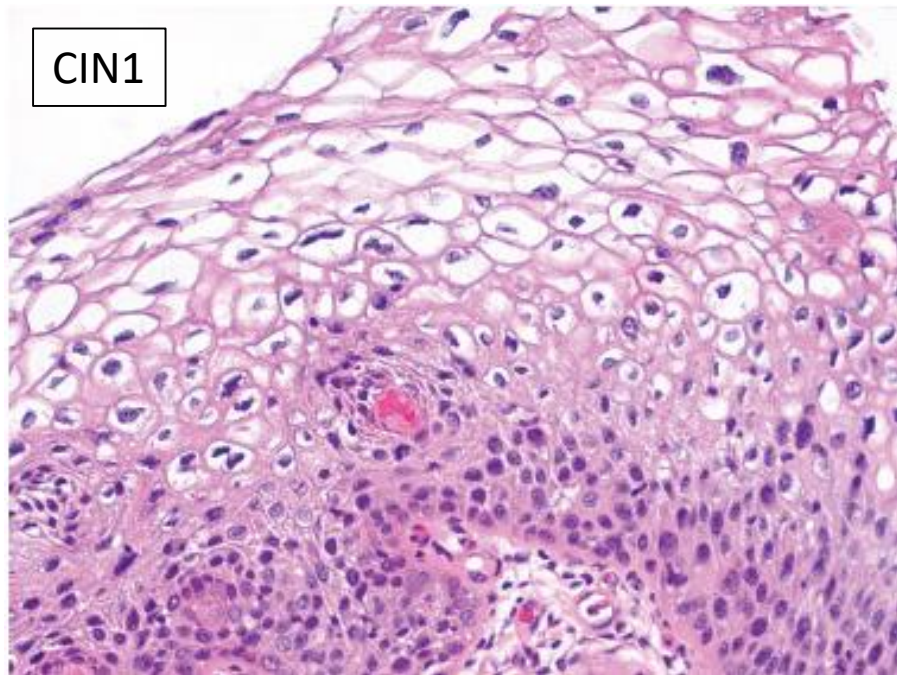
HSIL

Cervikal intraepitelial neoplasi grad 3(CIN 3)

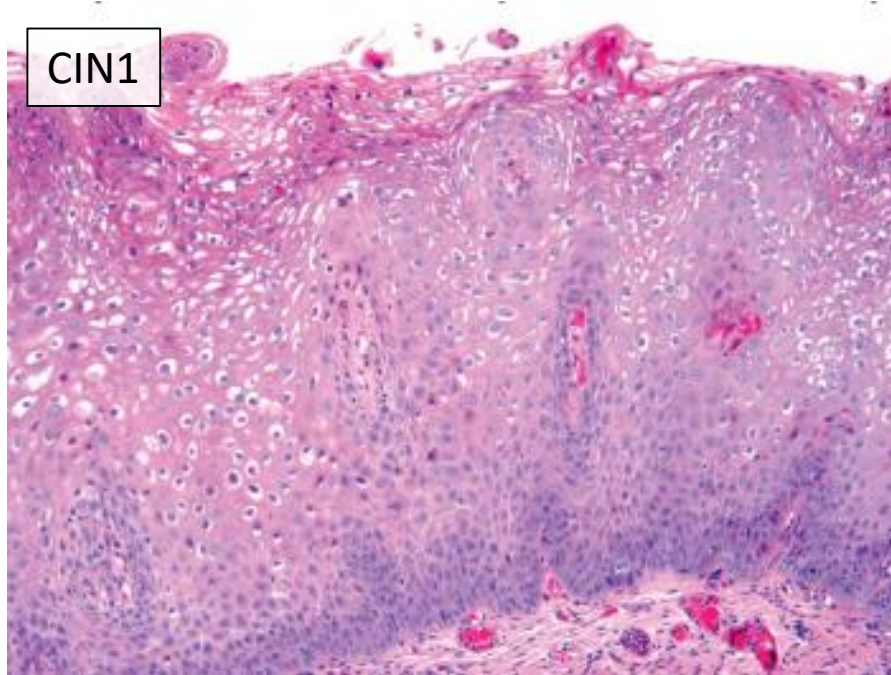


Høj K/C gennem
(næsten) hele epitelet

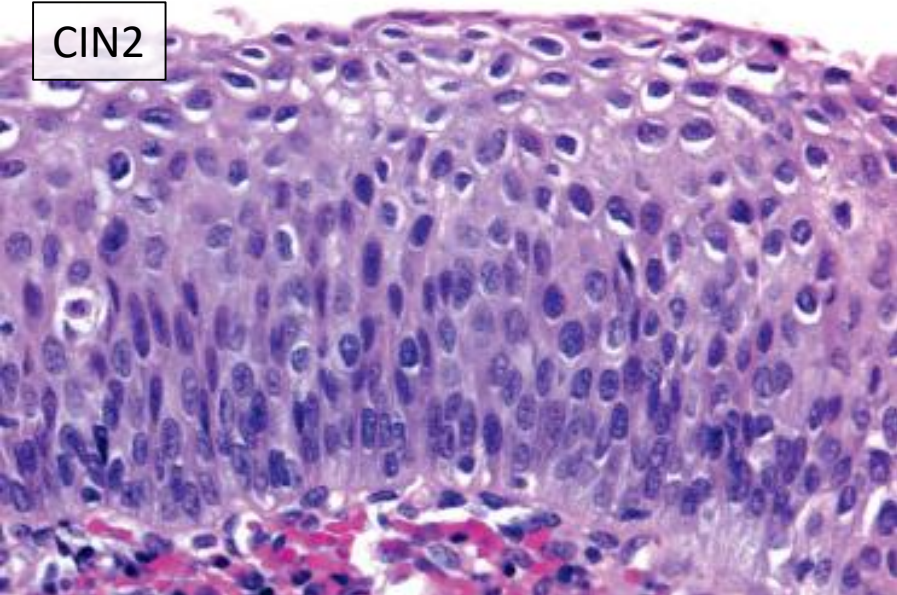
CIN1



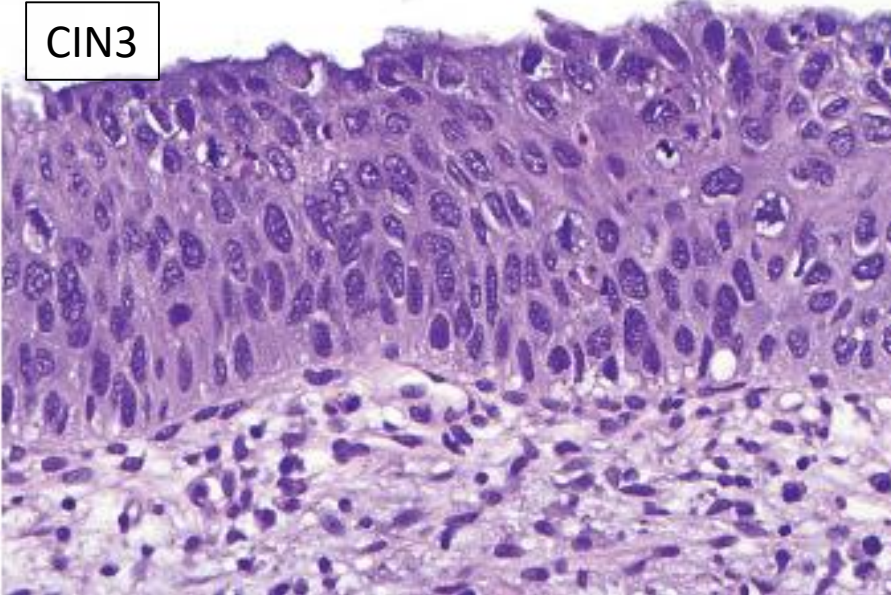
CIN1



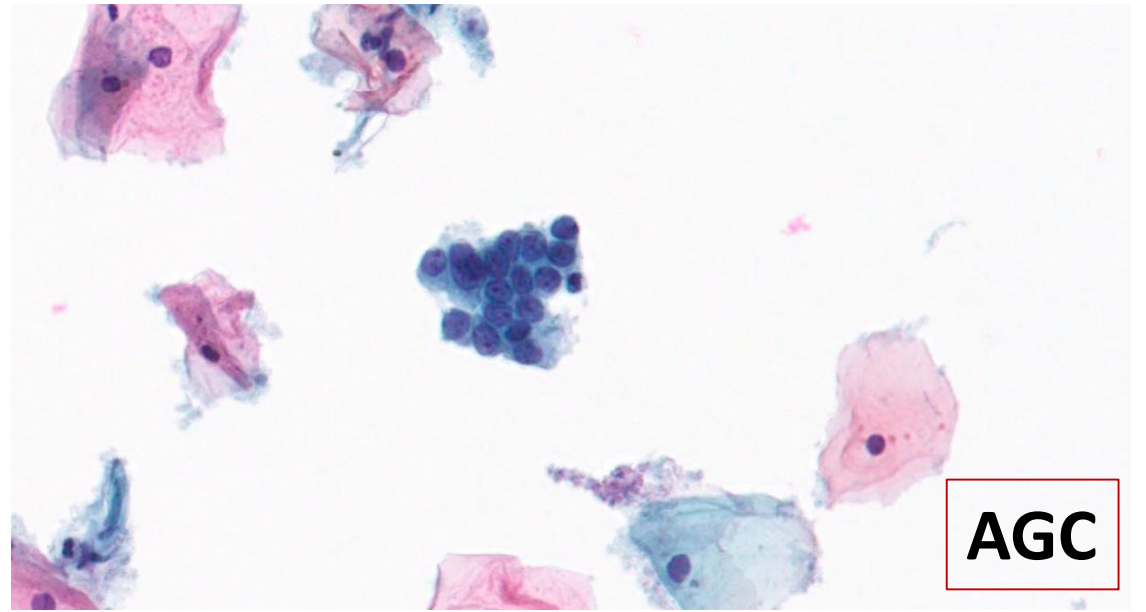
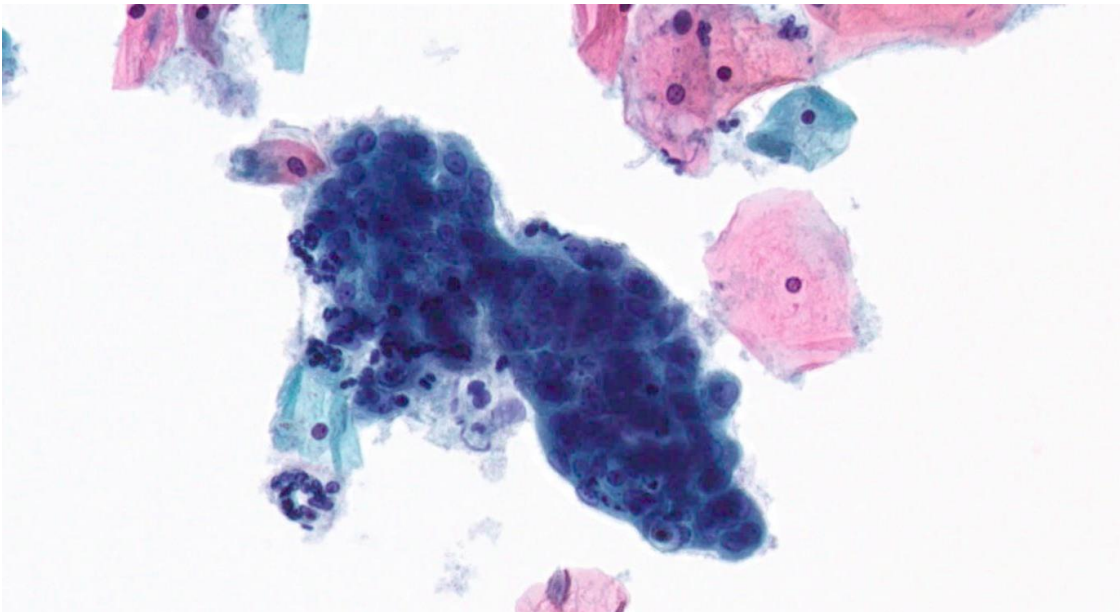
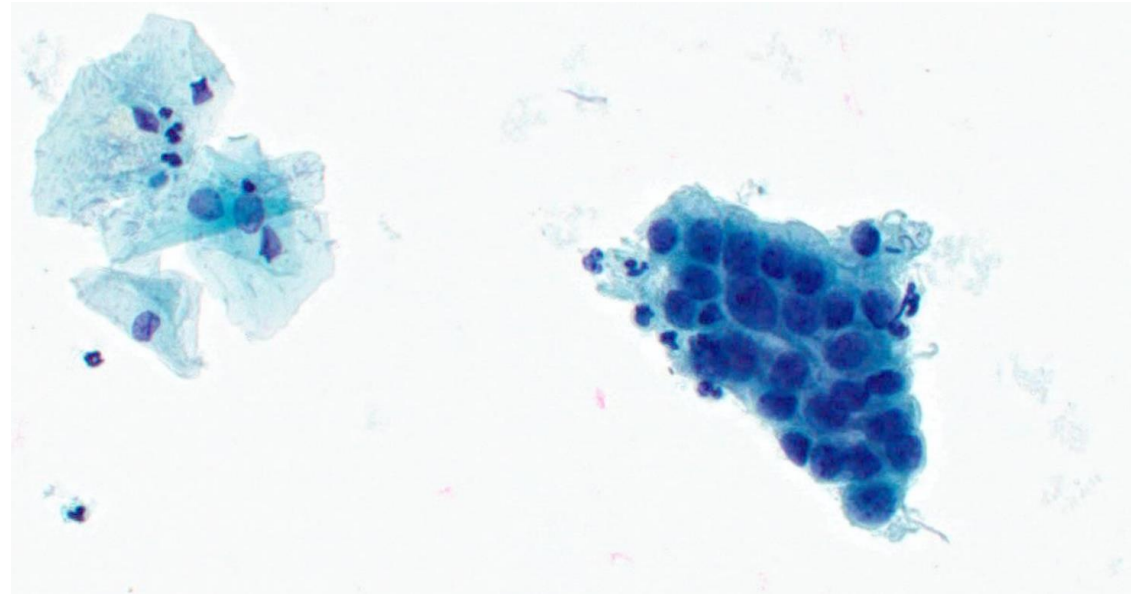
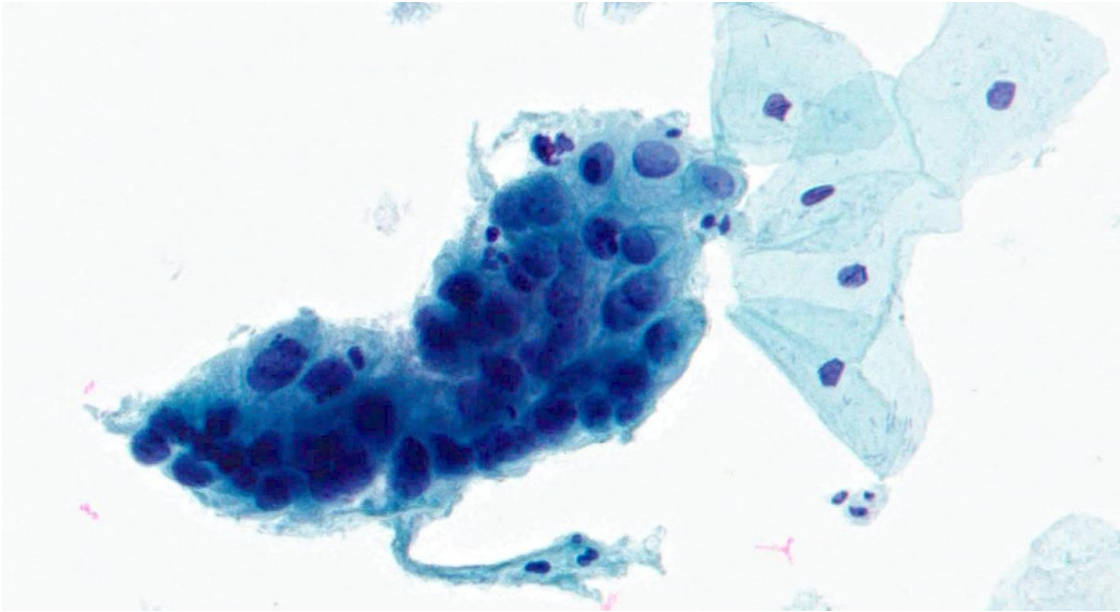
CIN2



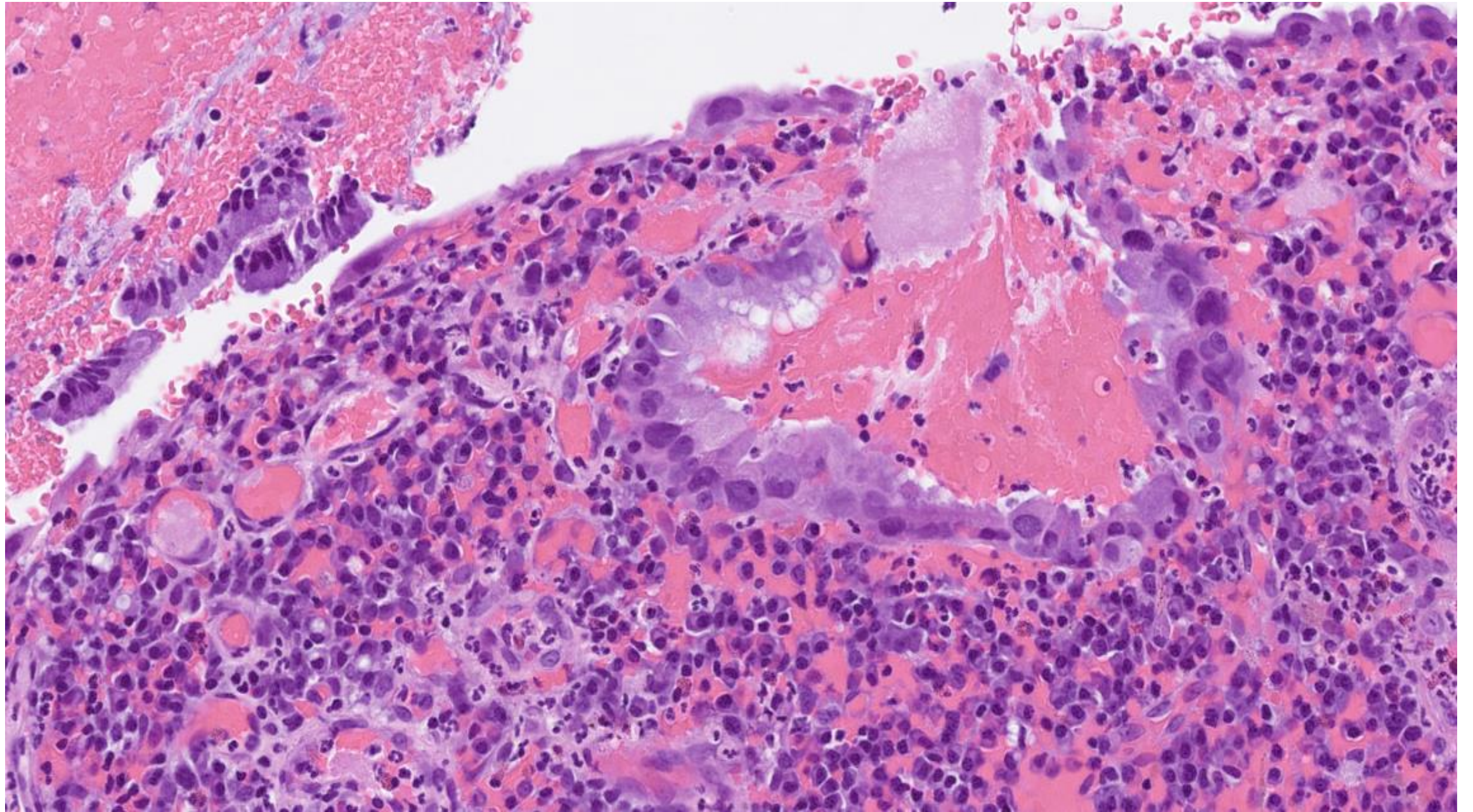
CIN3



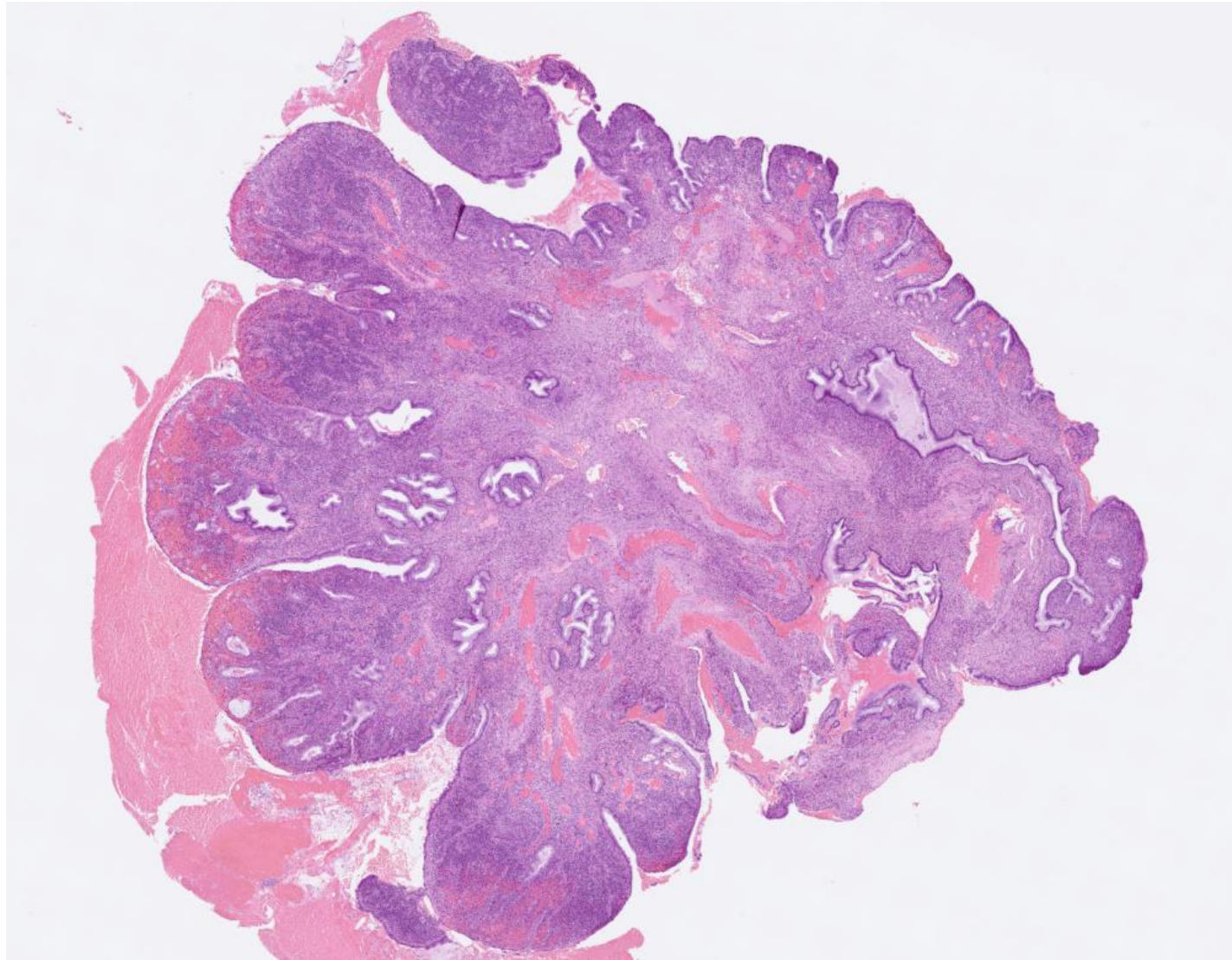
Case 3



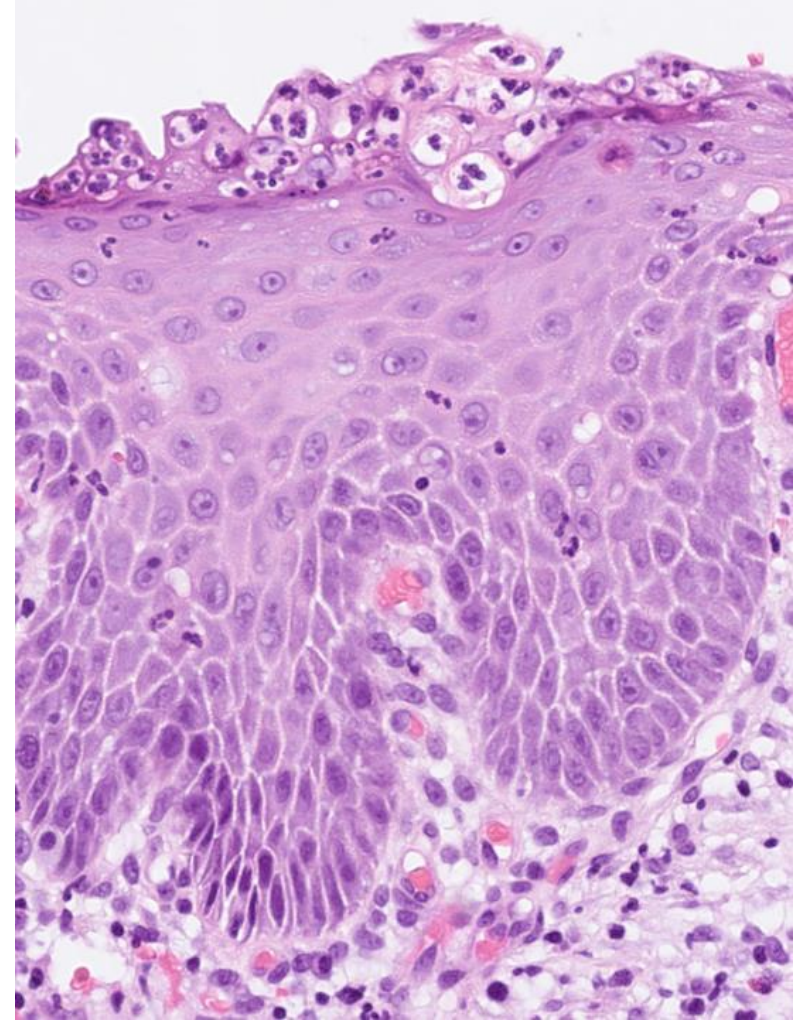
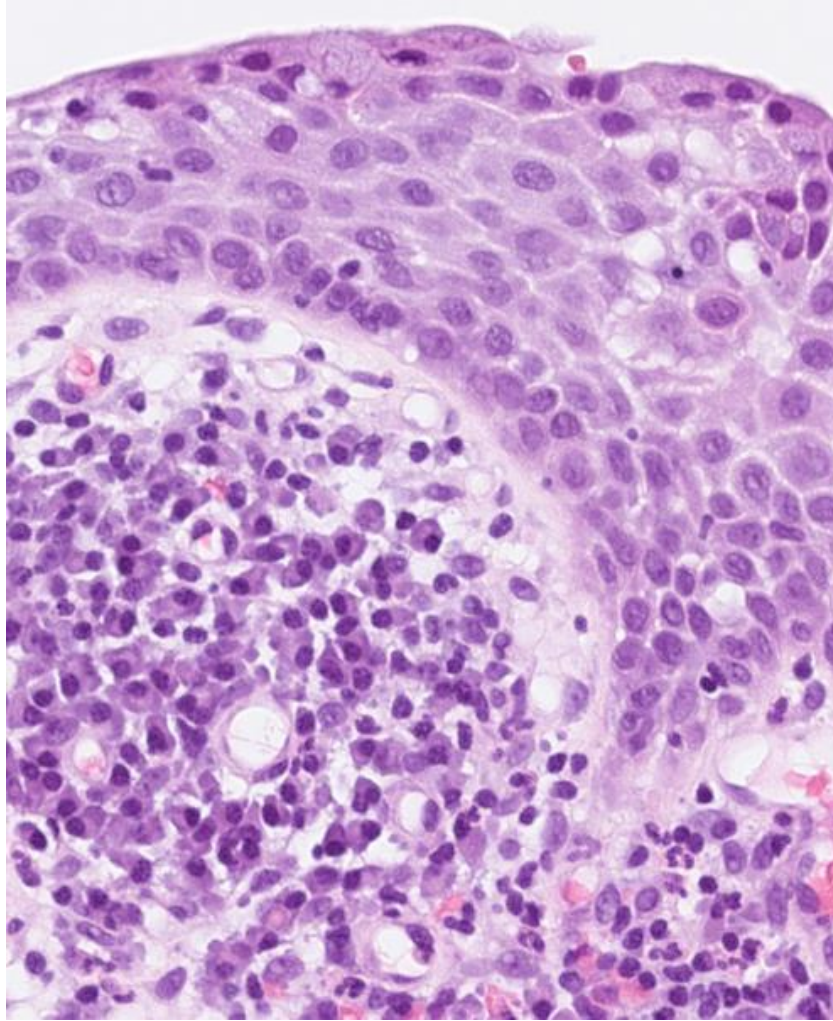
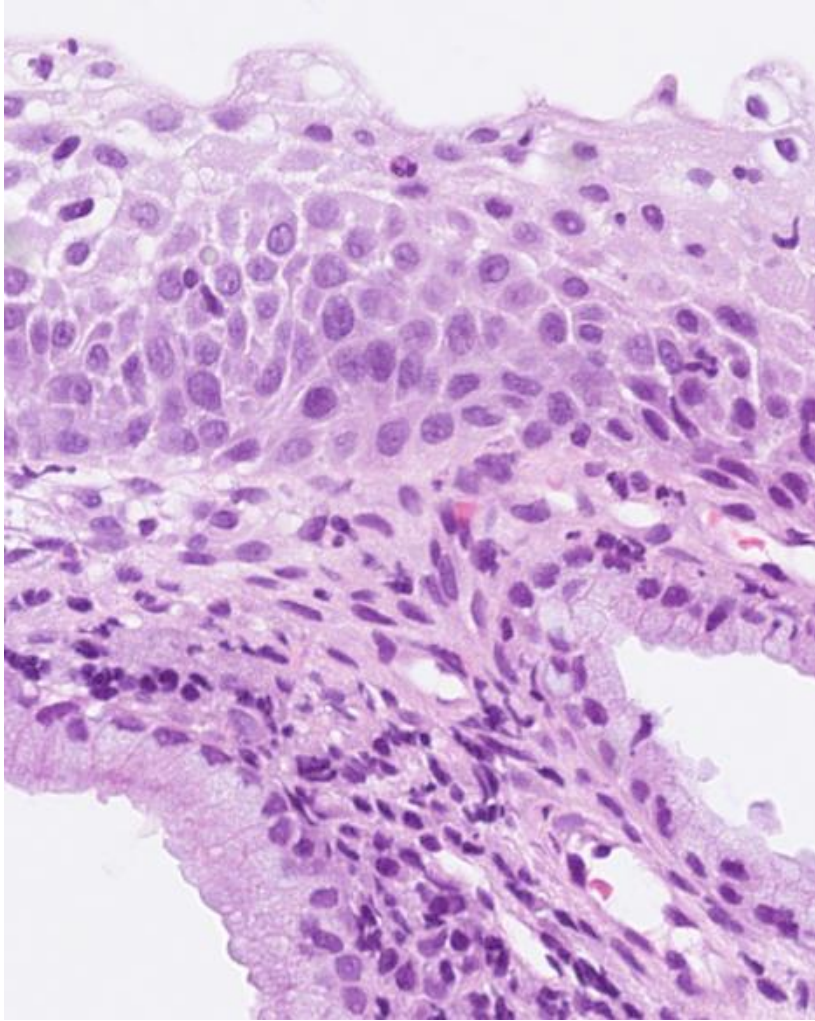
AGC

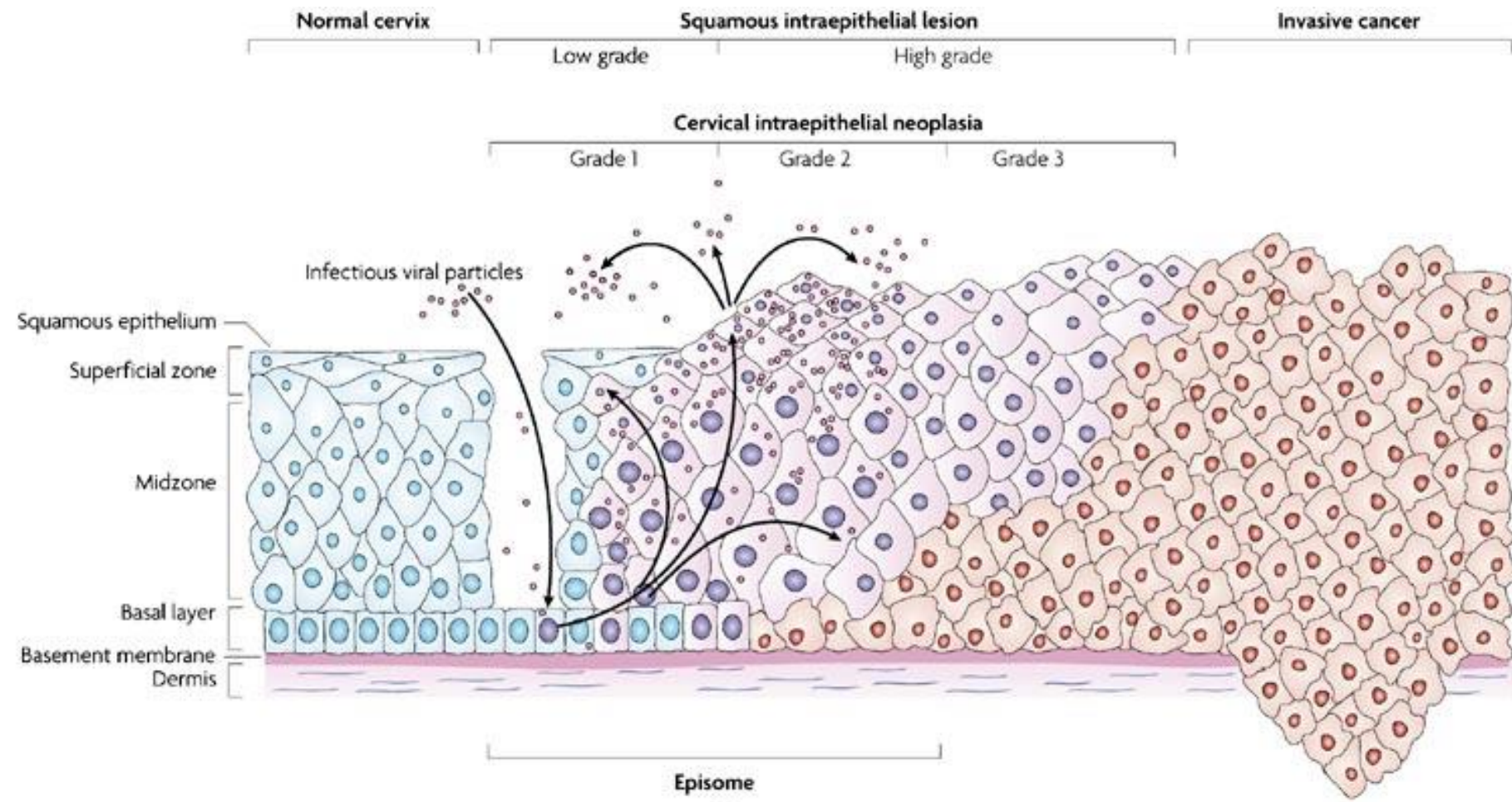


Endocervikal polyp

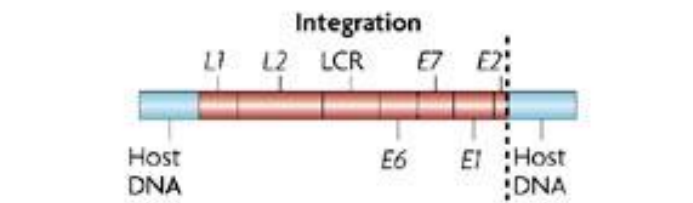
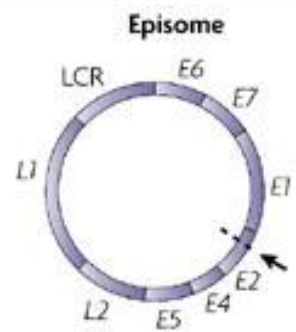


Reaktive forandringer i epitelet



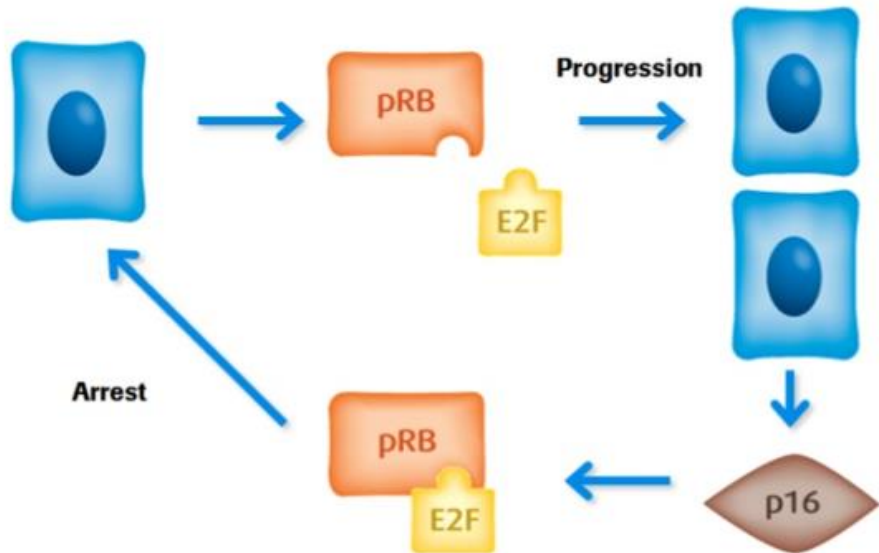


- Nuclei with episomal viral DNA
- Overexpression of E6 and E7
- Nuclei with integrated viral DNA
- Expression of early and late genes
- Normal nuclei



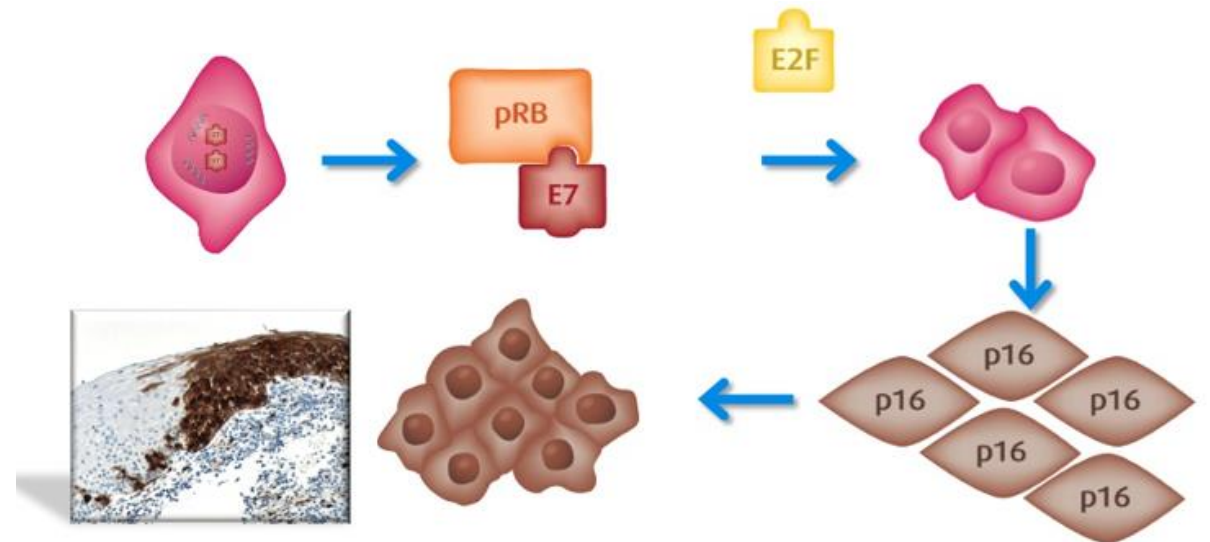
p16

Normalt reguleret celle cyklus



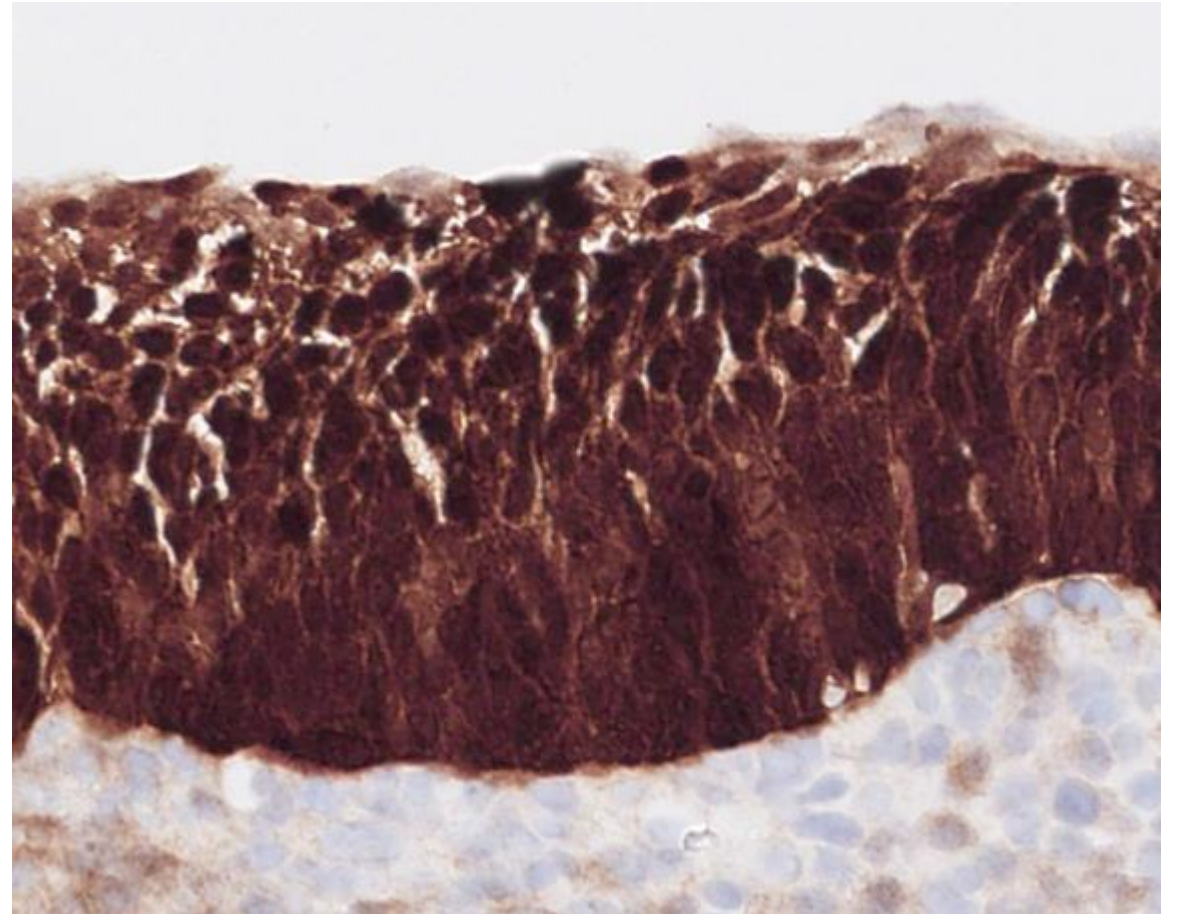
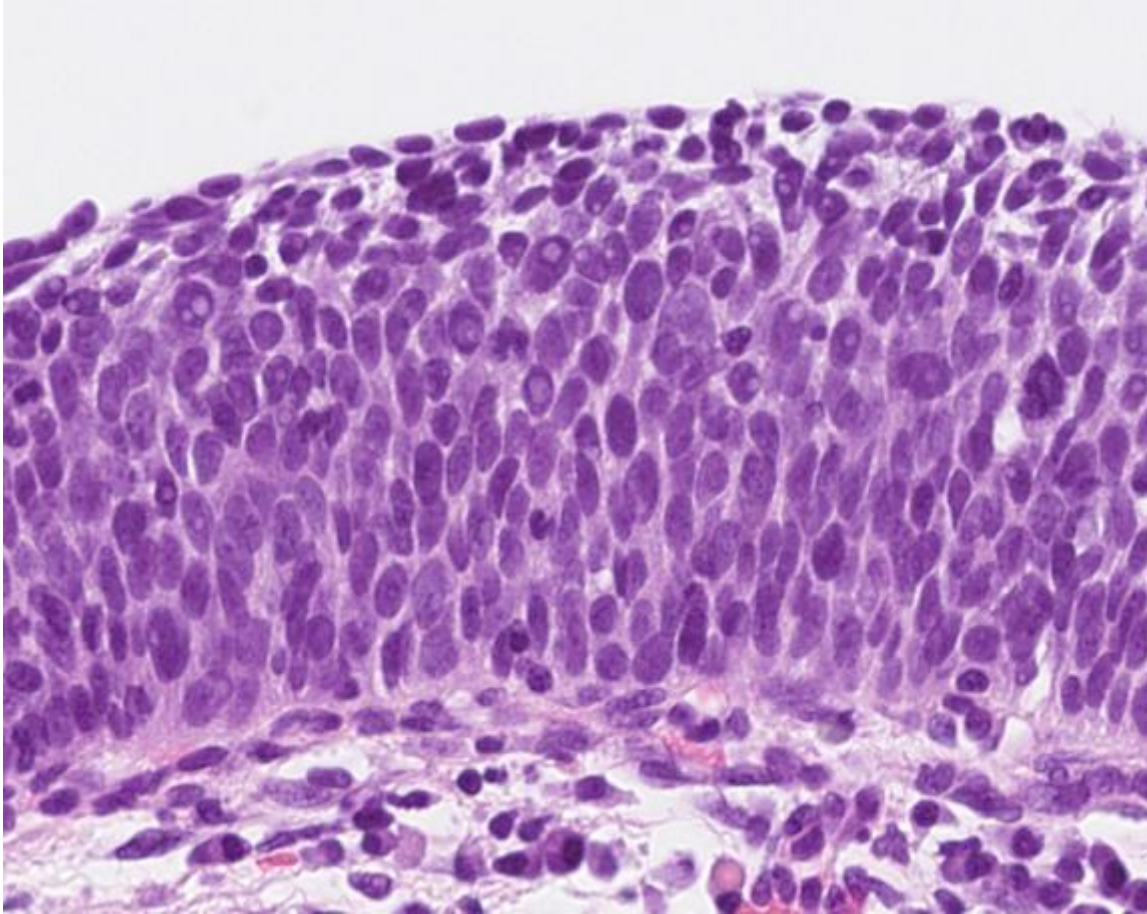
Normal ekspression af p16

Dereguleret celle cyklus ved hrHPV

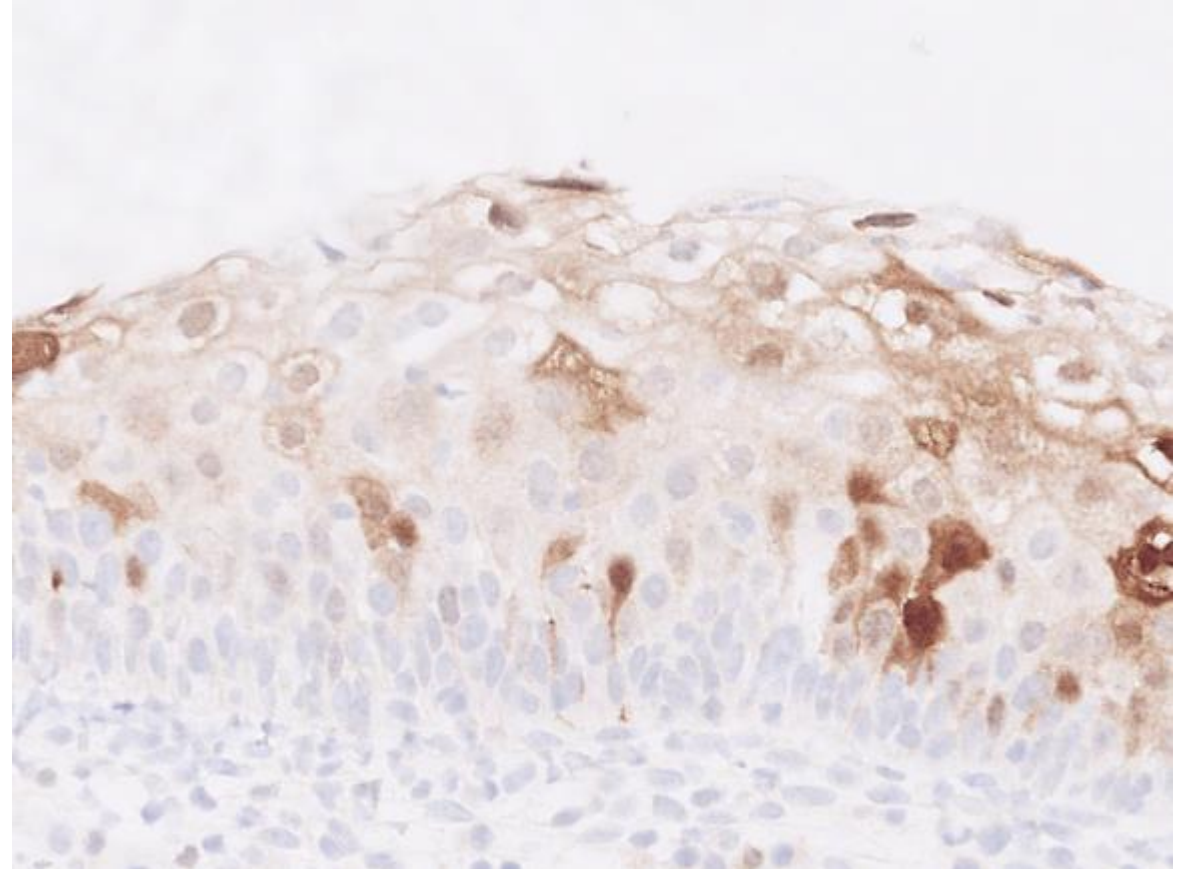
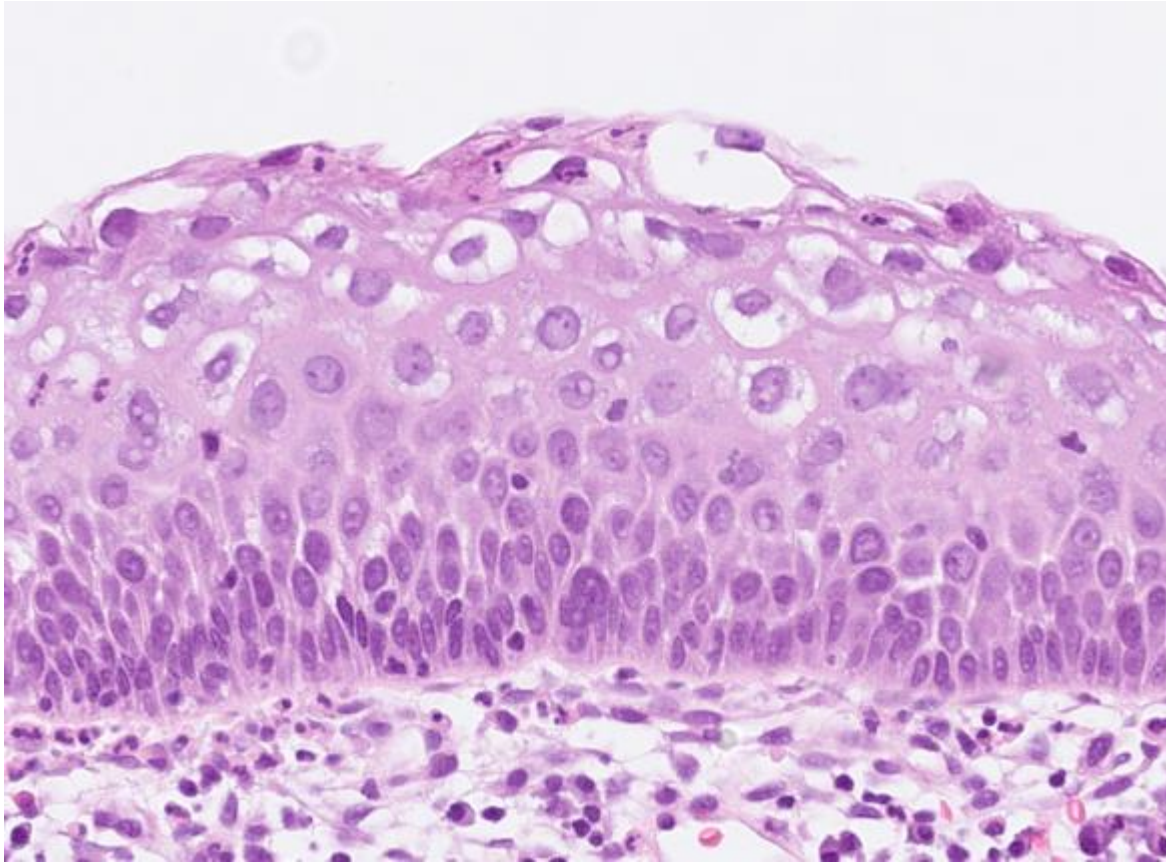


Overekspression af p16

CIN3 med p16 overekspression



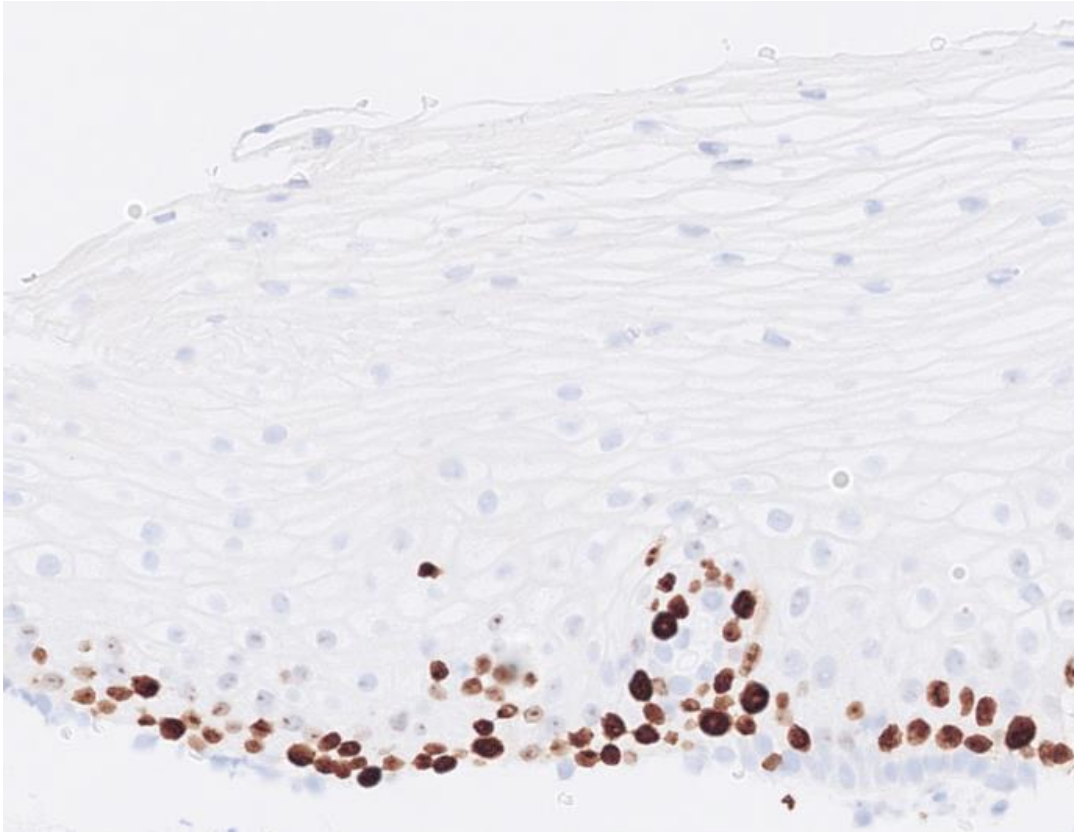
CIN1 med normal ekspression af p16



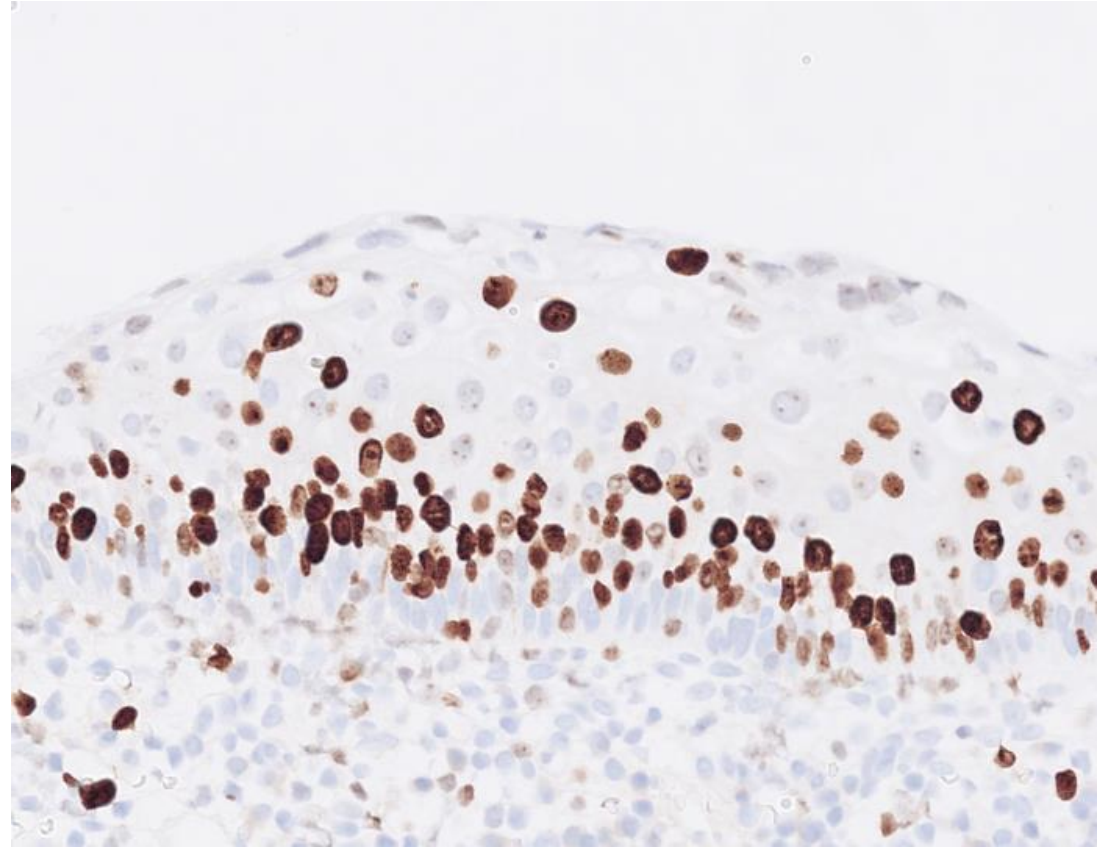
Indikation på infektion med lav-risiko HPV

ki67 (samme case)

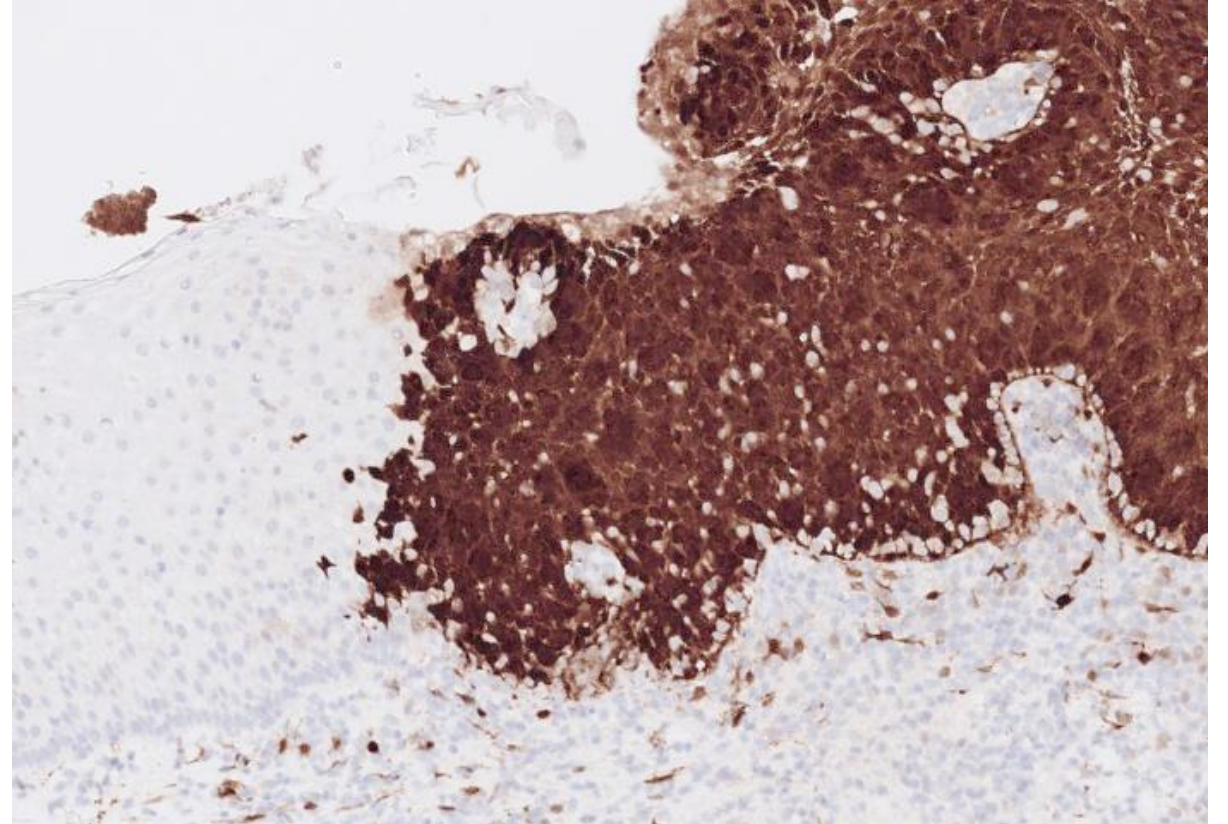
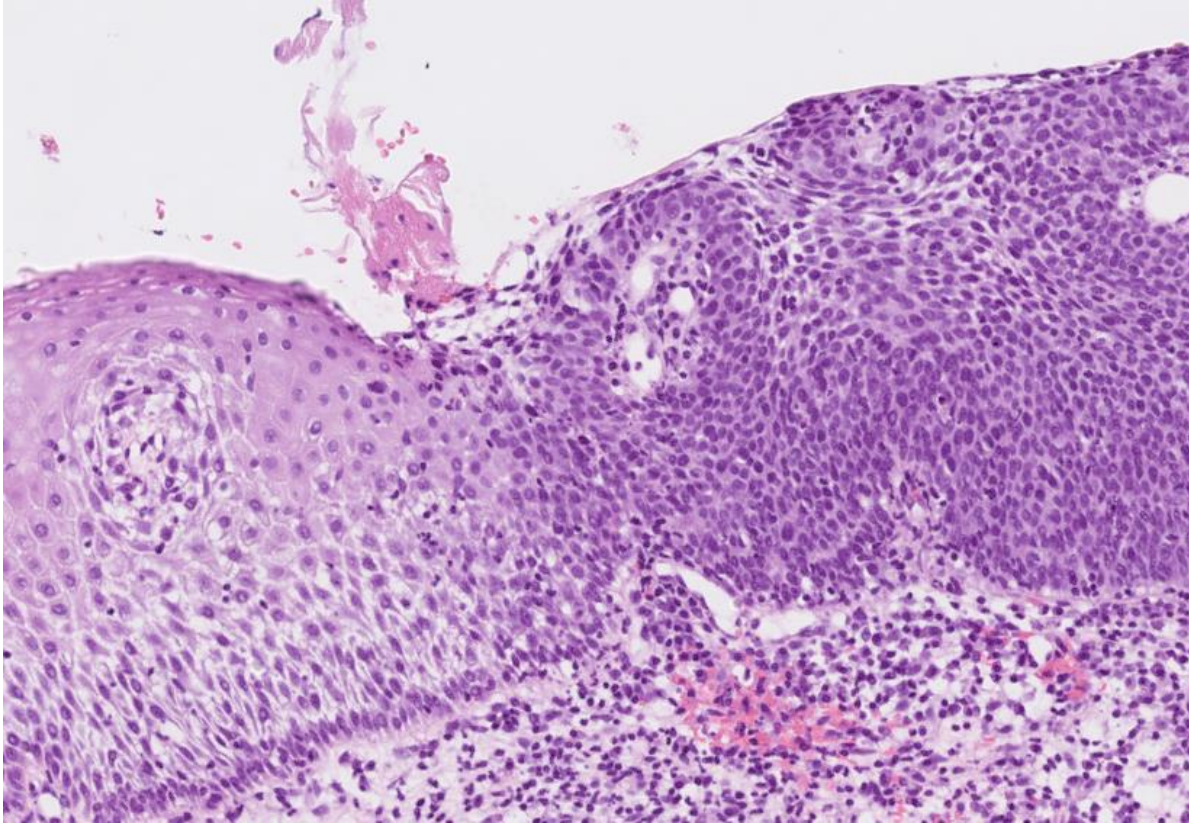
Normalt



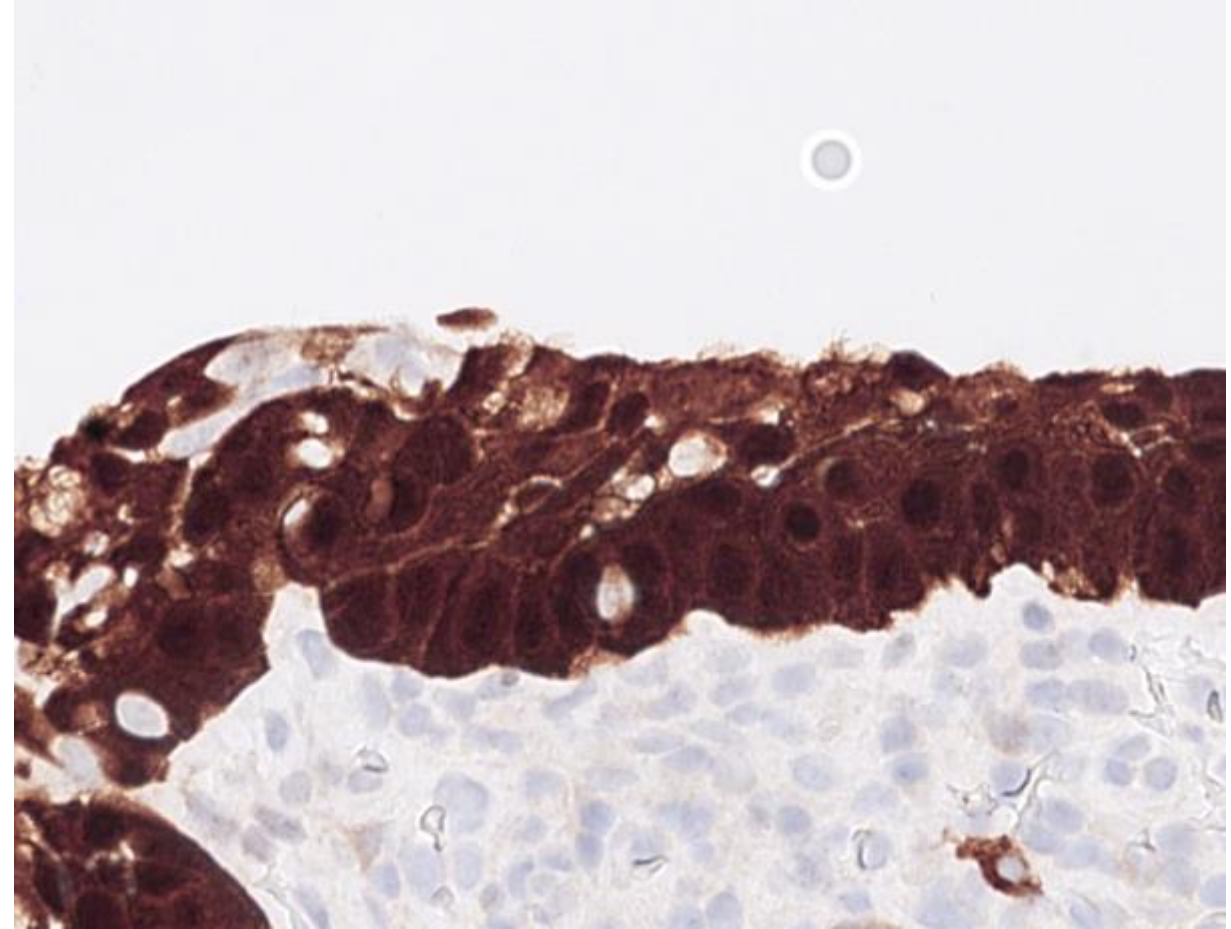
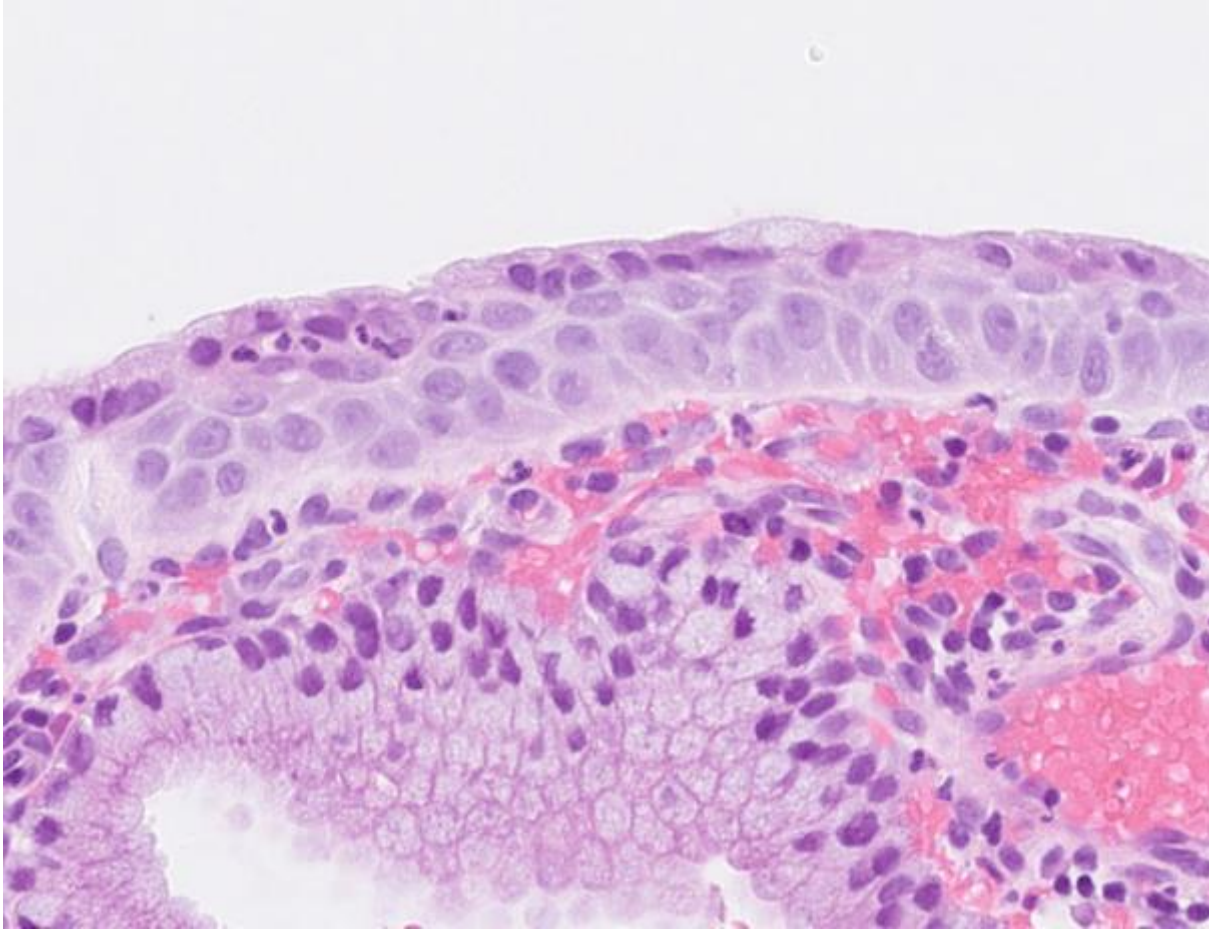
CIN1



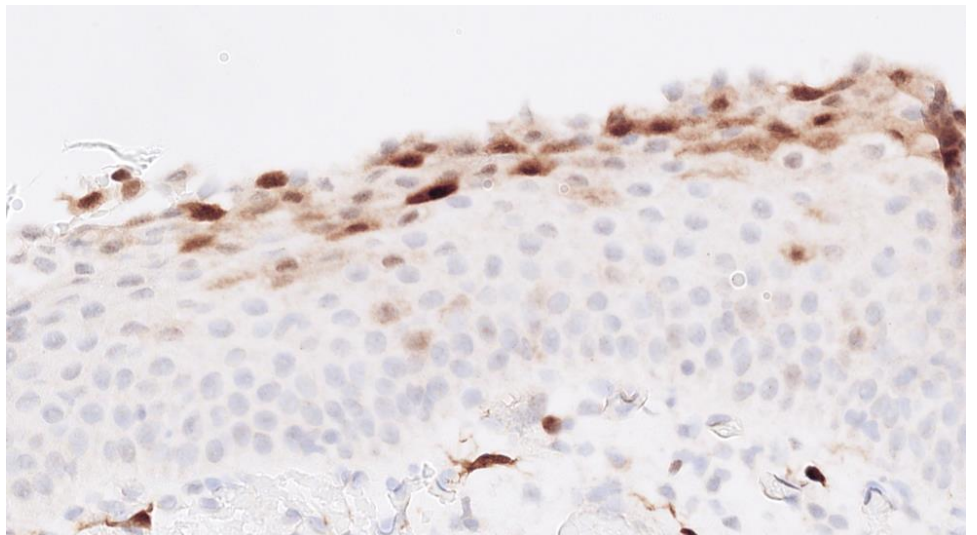
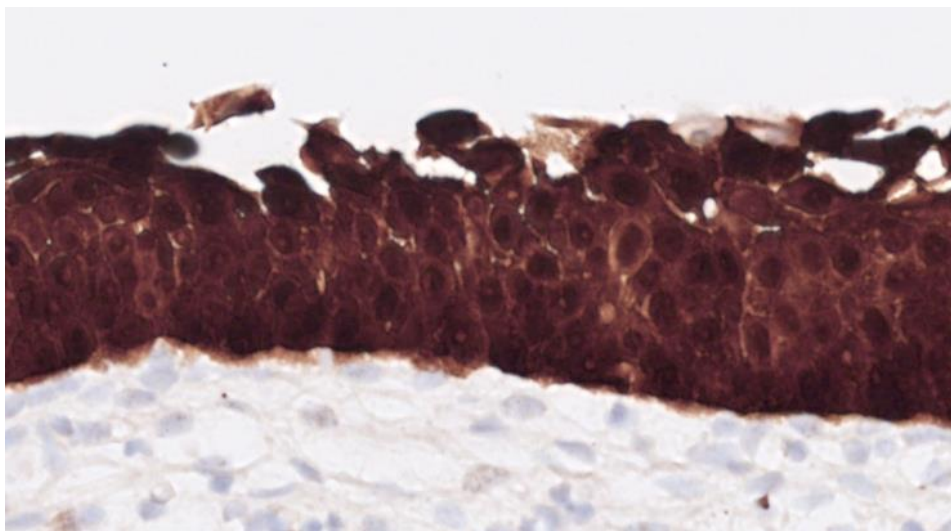
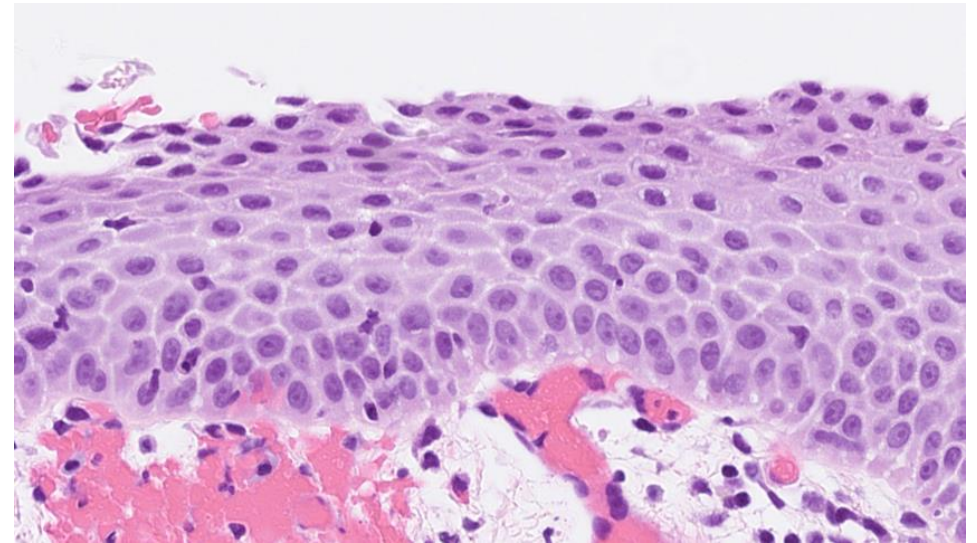
CIN3 med p16 overekspression



CIN i umodent metaplastisk pladeepitel



CIN 3 vs. umoden planocellulær metaplasi

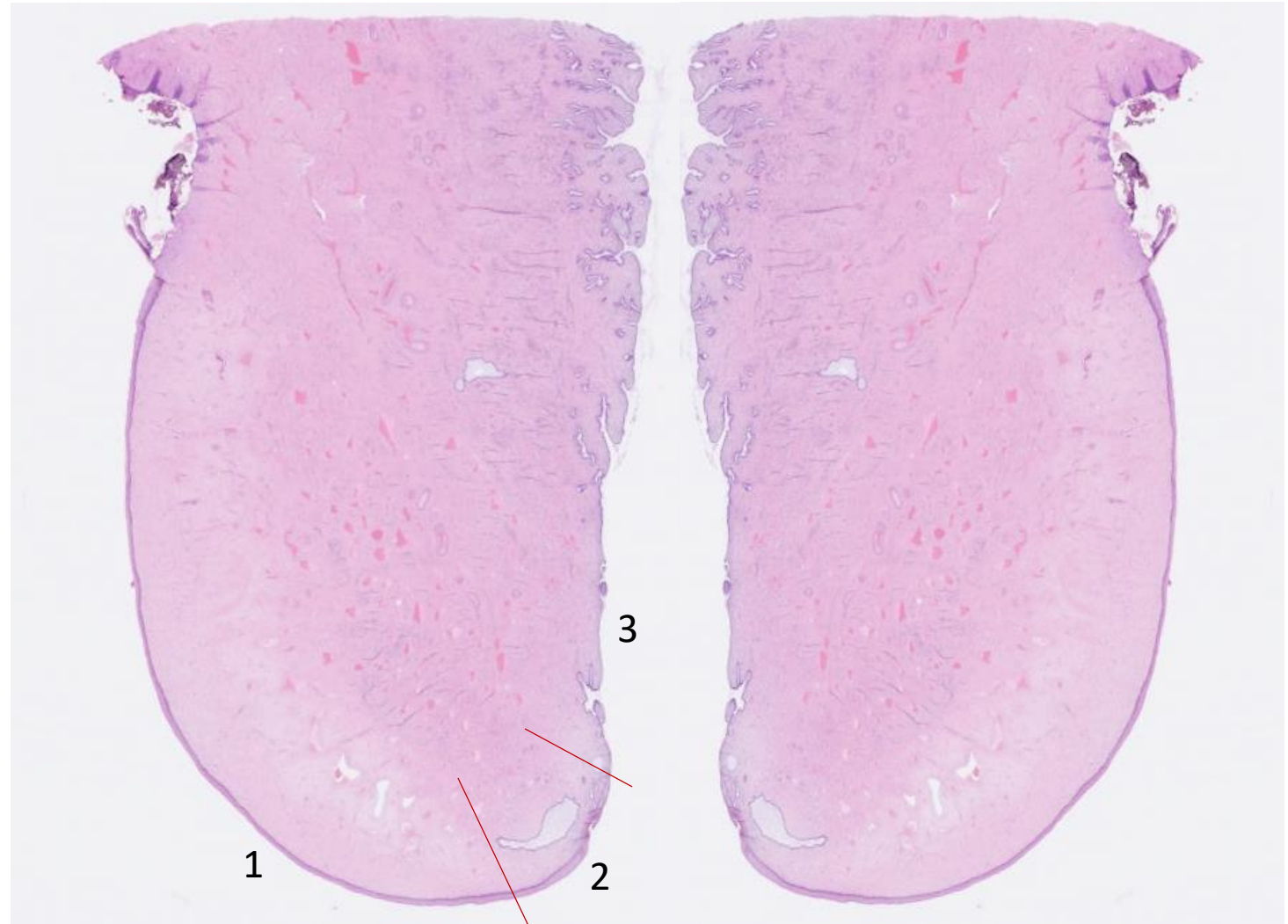


Cervix uteri

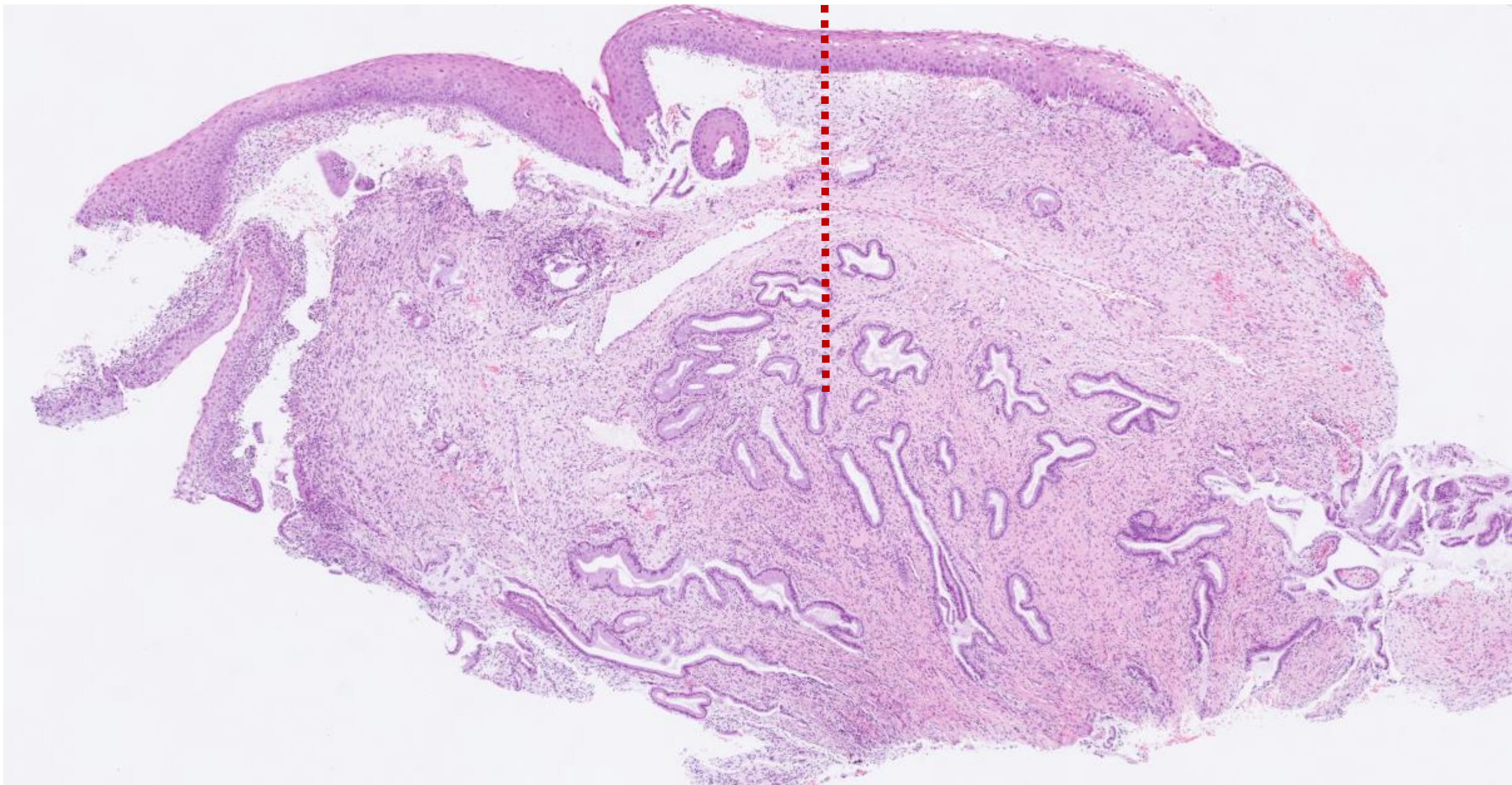
1. Exocervix
2. Transformationszonen
3. Endocervix

Transformationszonen =

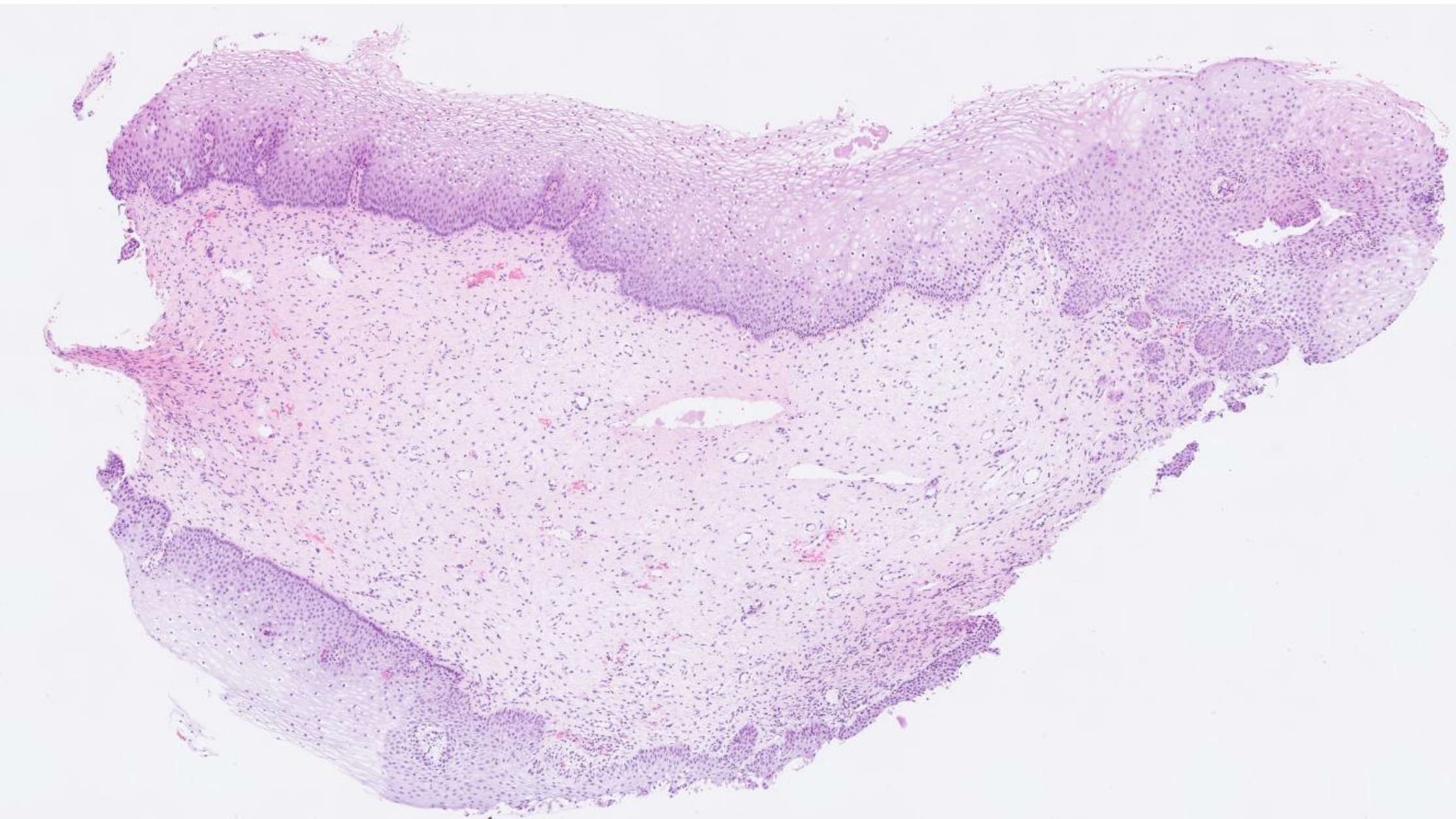
Både cylinder og –pladeepitel i en linje trukket vinkelret på overfladen.



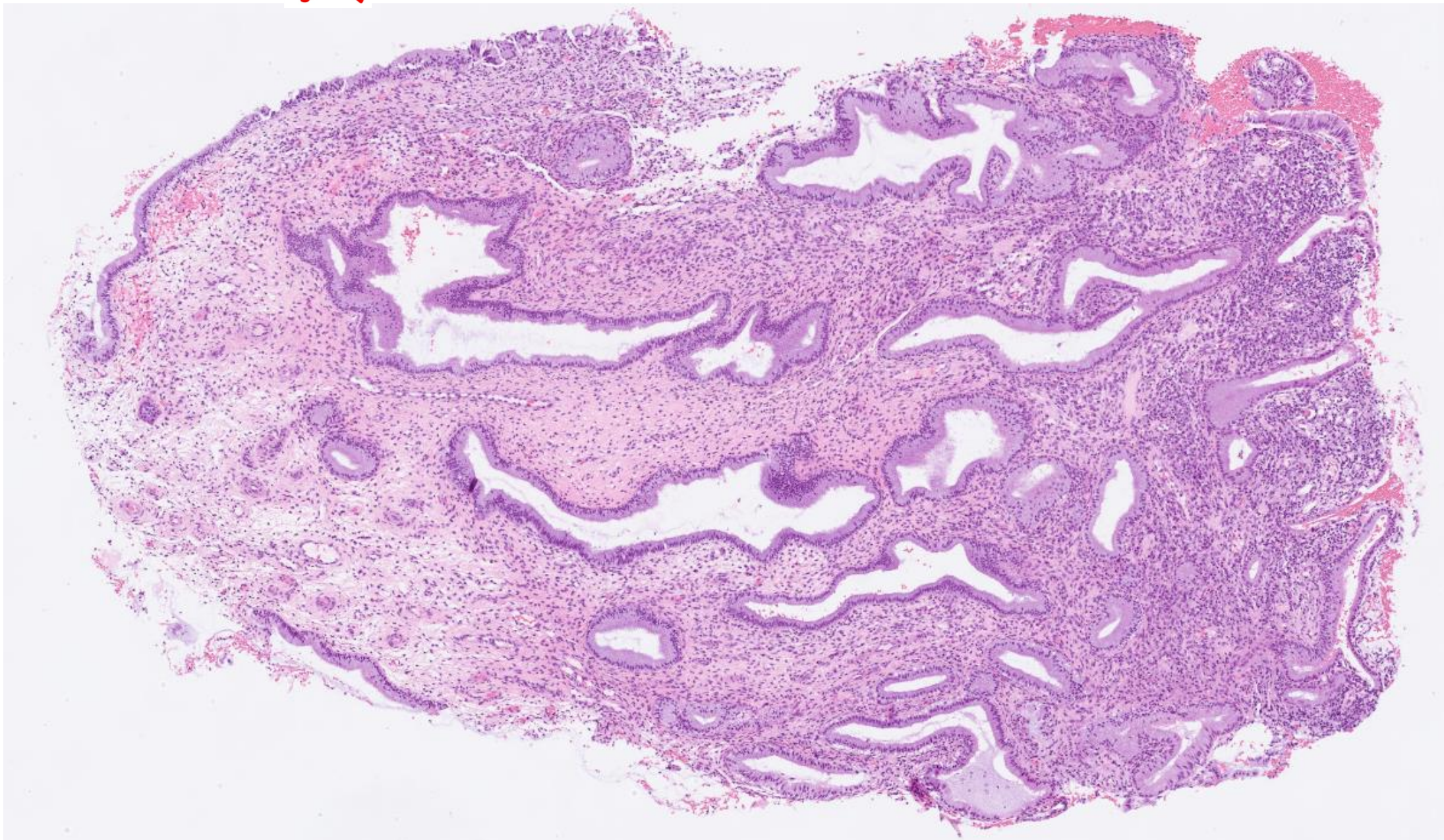
Transformationszonen?



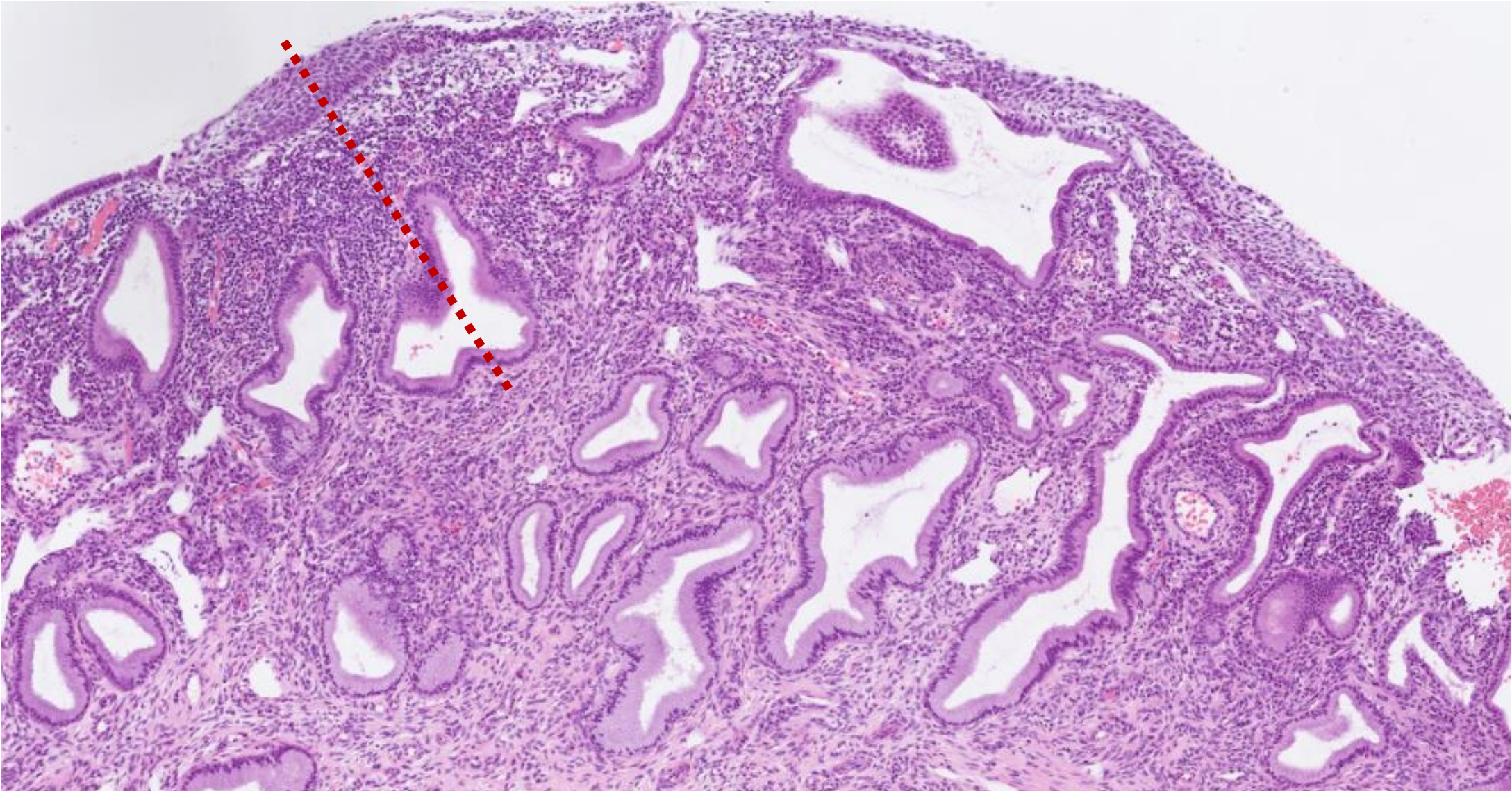
Transformationszonen?



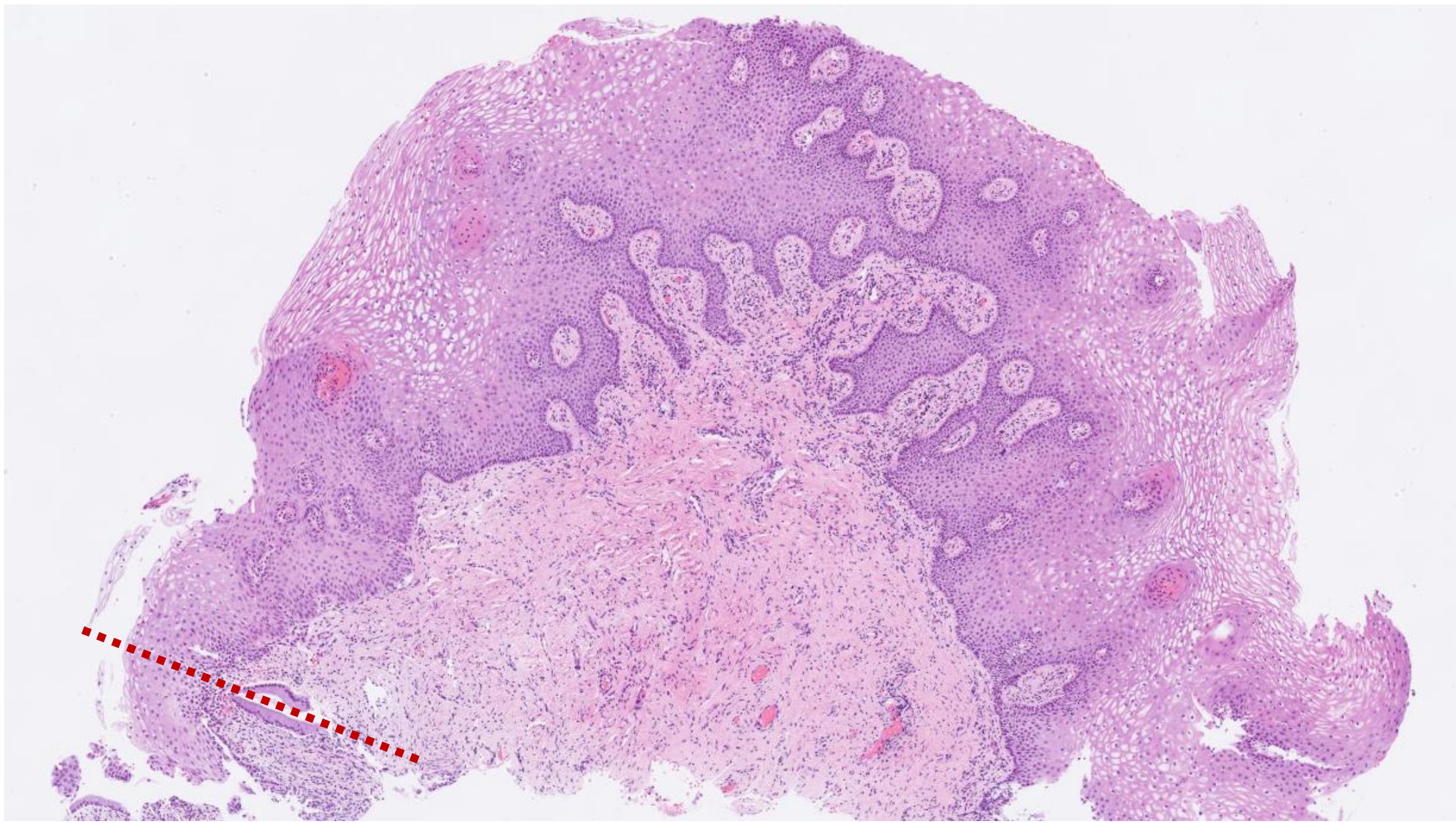
Transformationszonen?



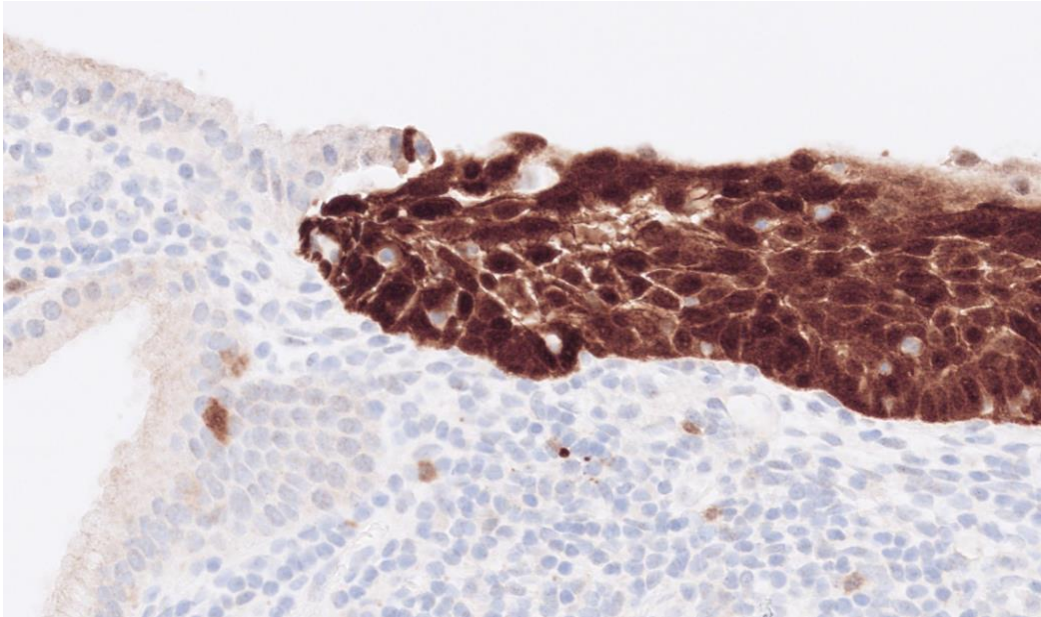
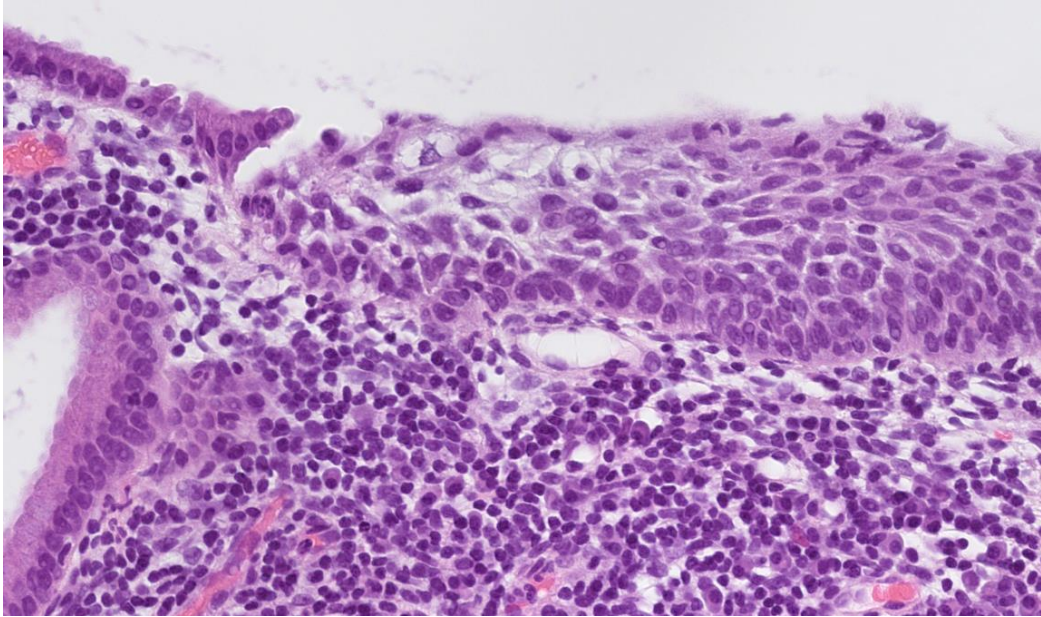
Transformationszonen?



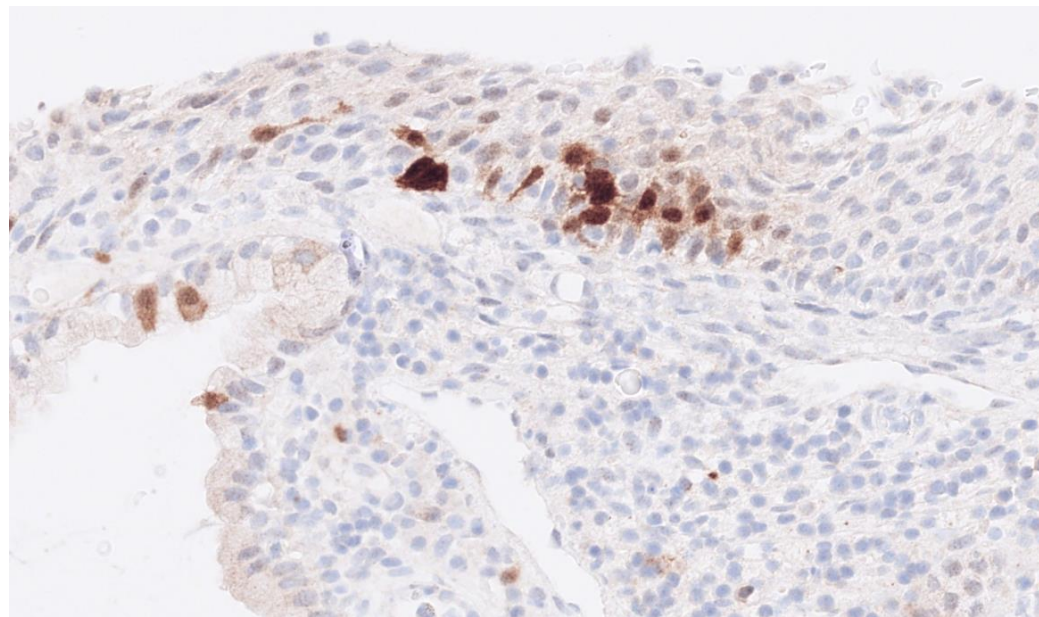
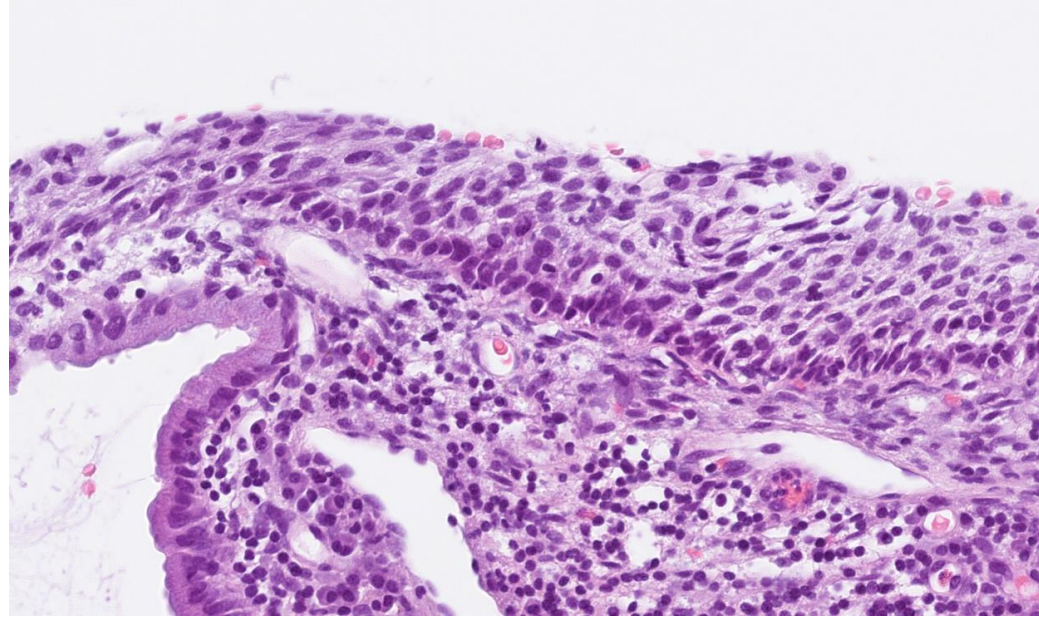
Transformationszonen?



CIN3



Reaktivt



Sundhedsfaglig diplomuddannelse:
Histologisk mikroskopi og fortolkning

Ses vi...?

