

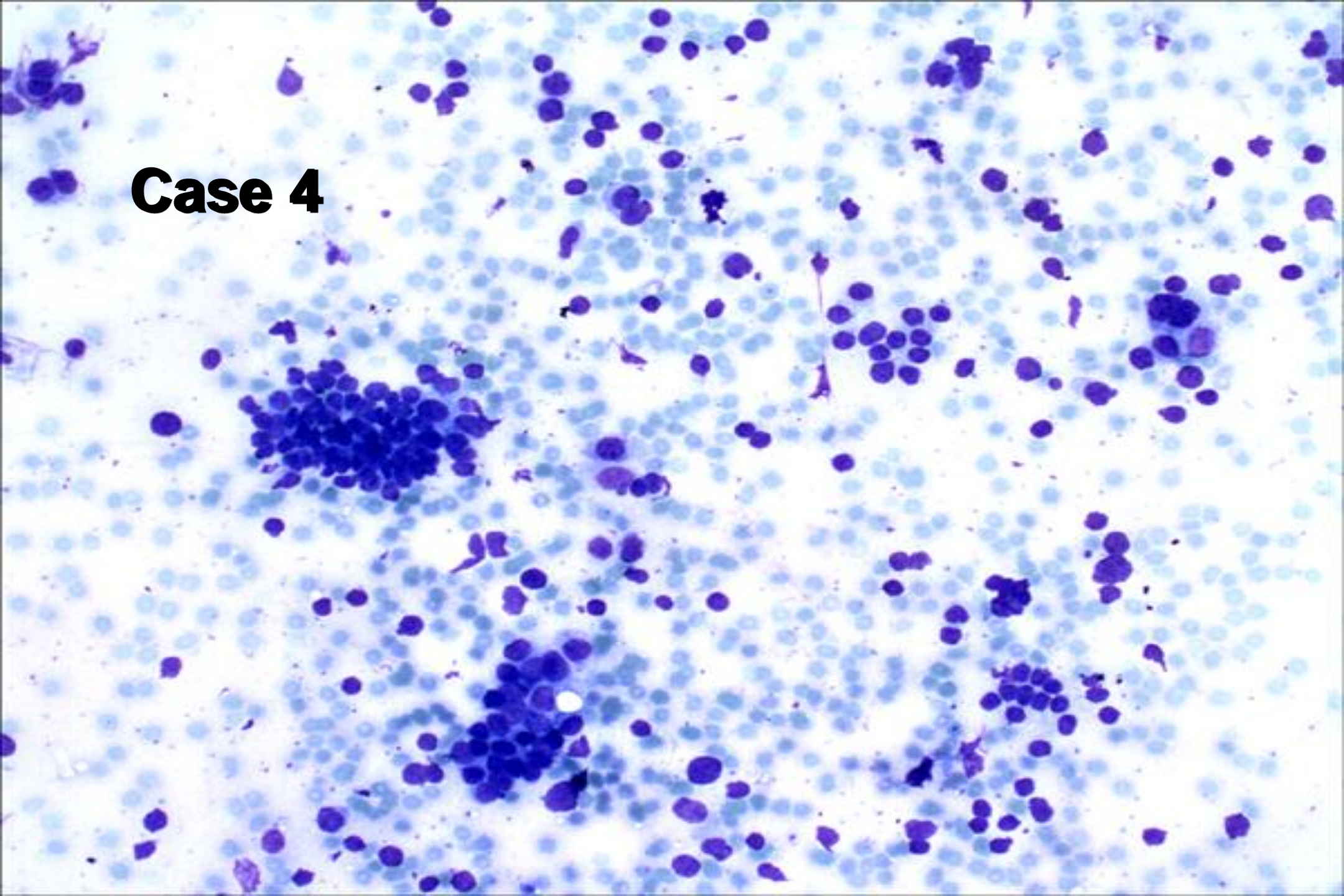
Case 4

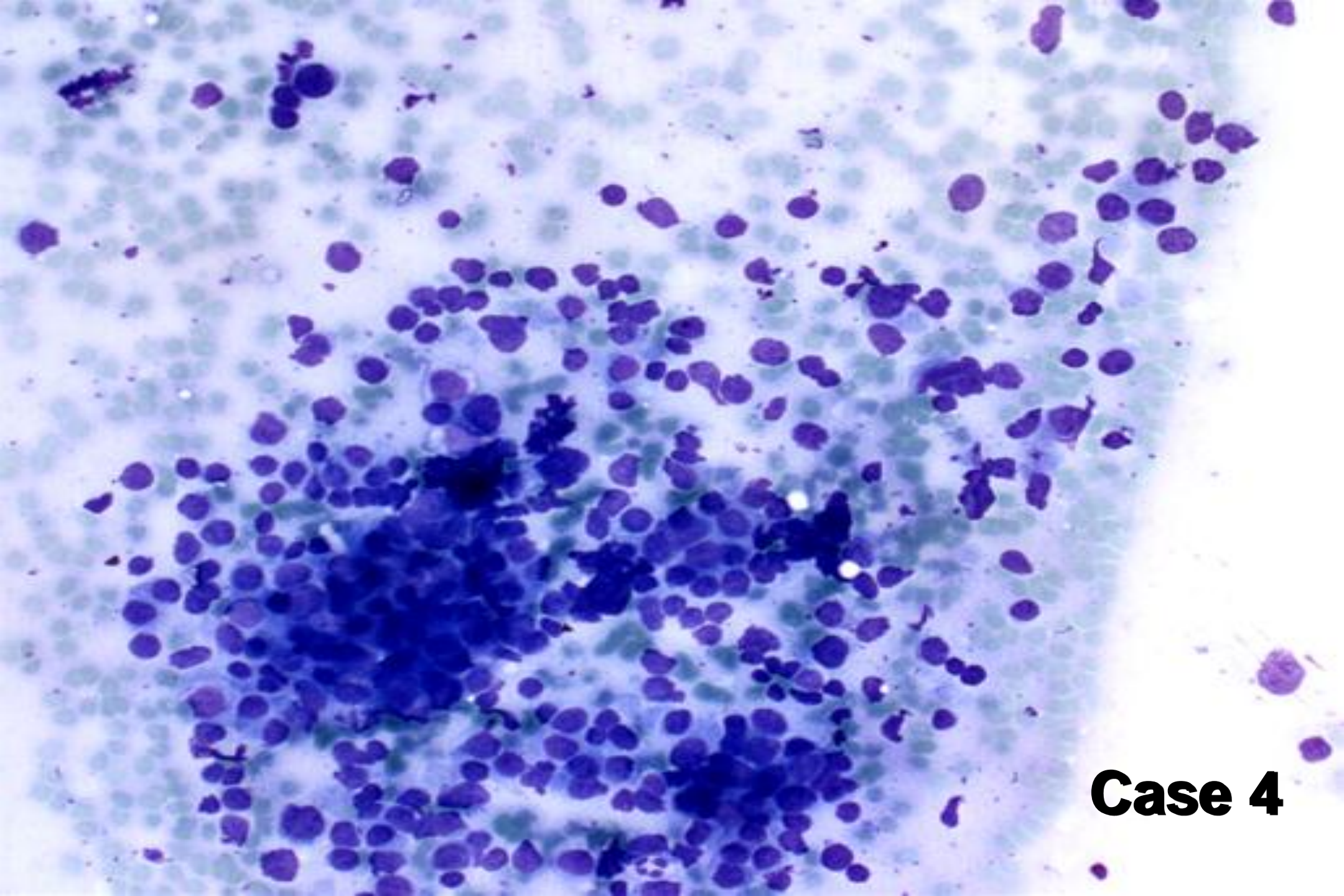
**82-year-old man with enlarged
lymph node
in the neck region**

A microscopic image of a tissue section, likely a histological slide. The image shows a large, irregularly shaped, white, amorphous mass in the center, which appears to be a necrotic or cystic area. This central mass is surrounded by a dense population of small, dark blue-stained cells, possibly representing a cellular reaction or a tumor. The cells are distributed throughout the field, with some areas showing higher concentrations. The overall appearance is that of a pathological specimen, possibly a tumor or a large abscess. The text "Case 4" is overlaid on the image in a bold, black font.

Case 4

Case 4





Case 4