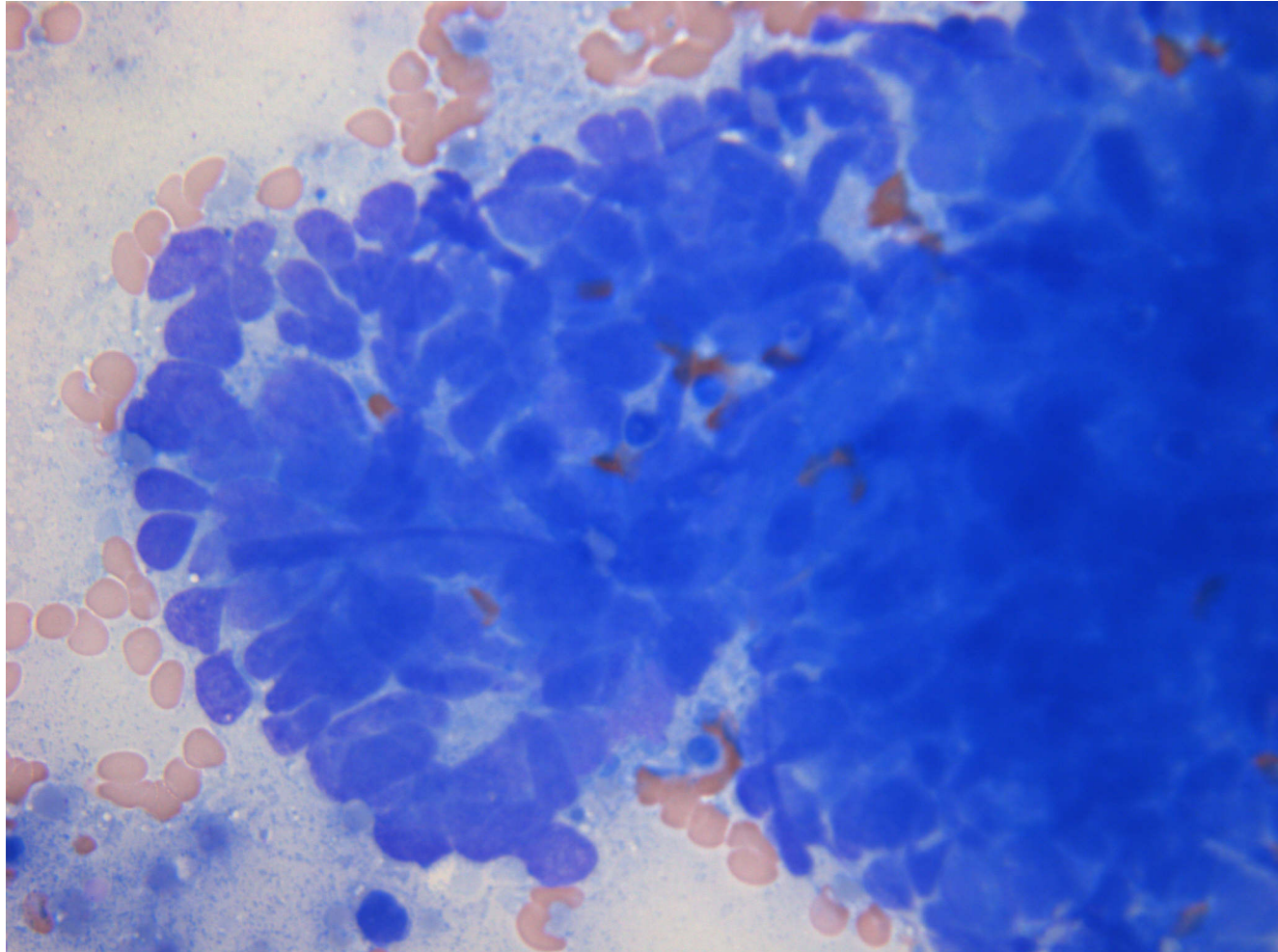
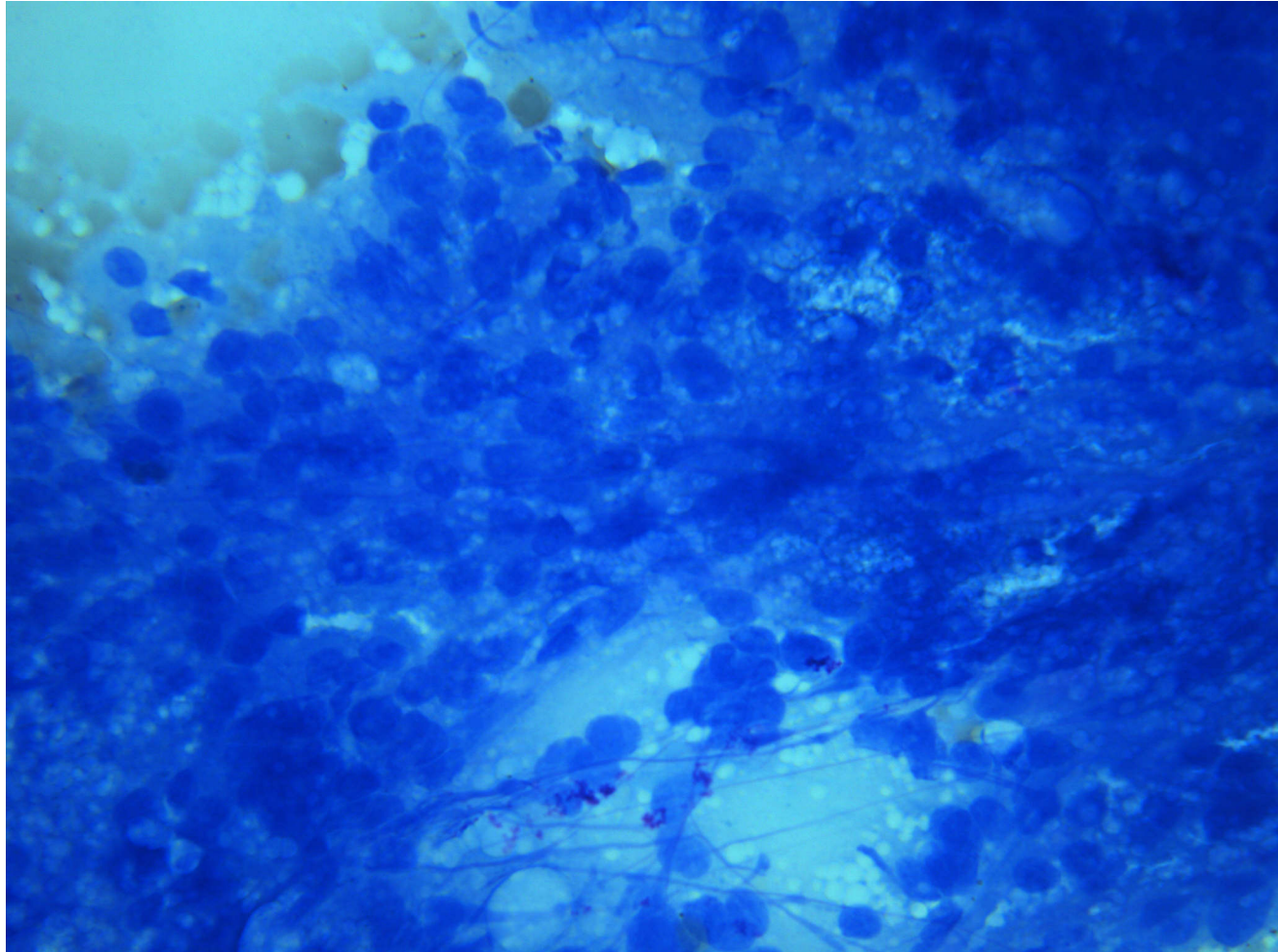


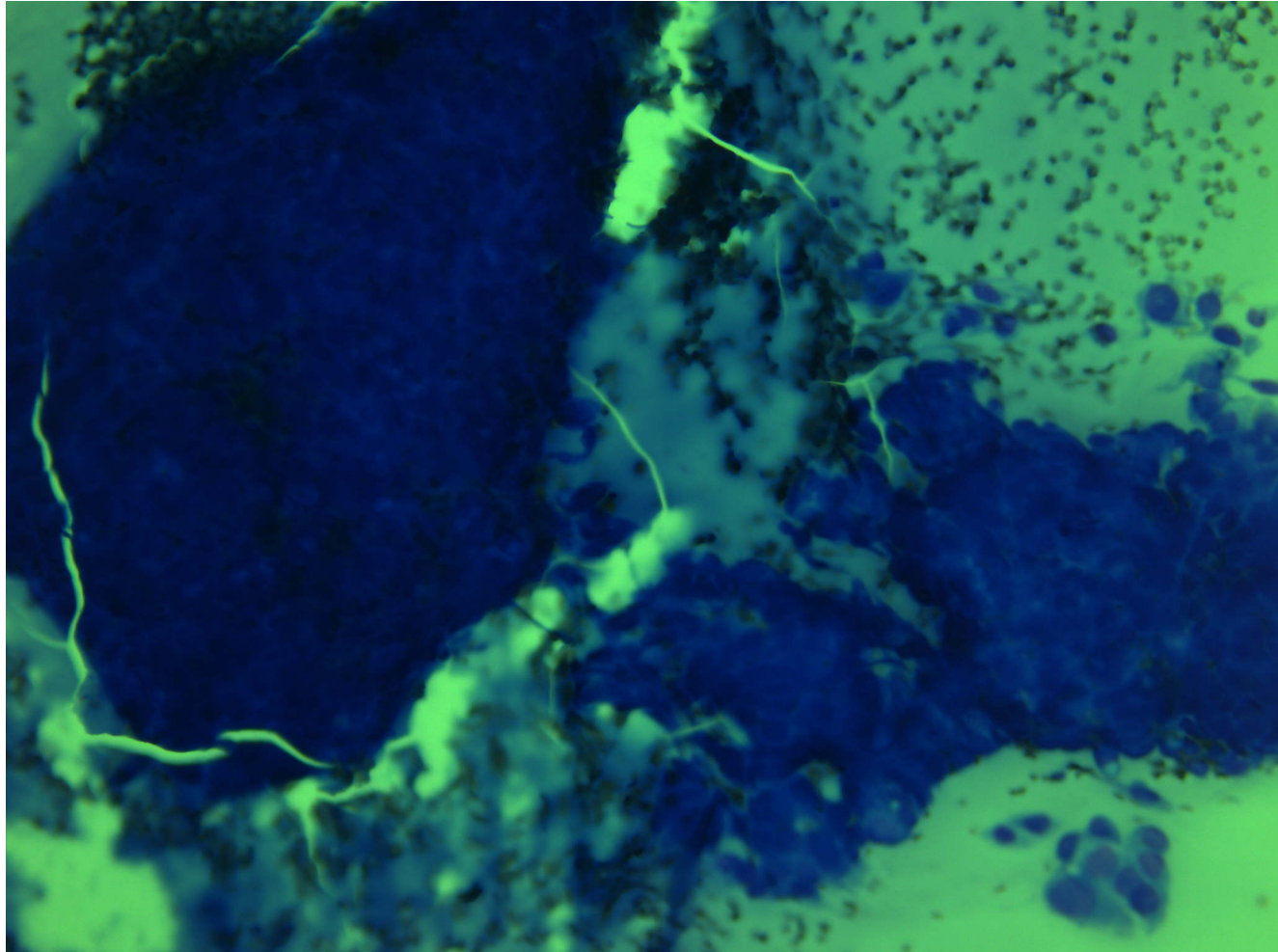
Finnål fra binyre med SCLC



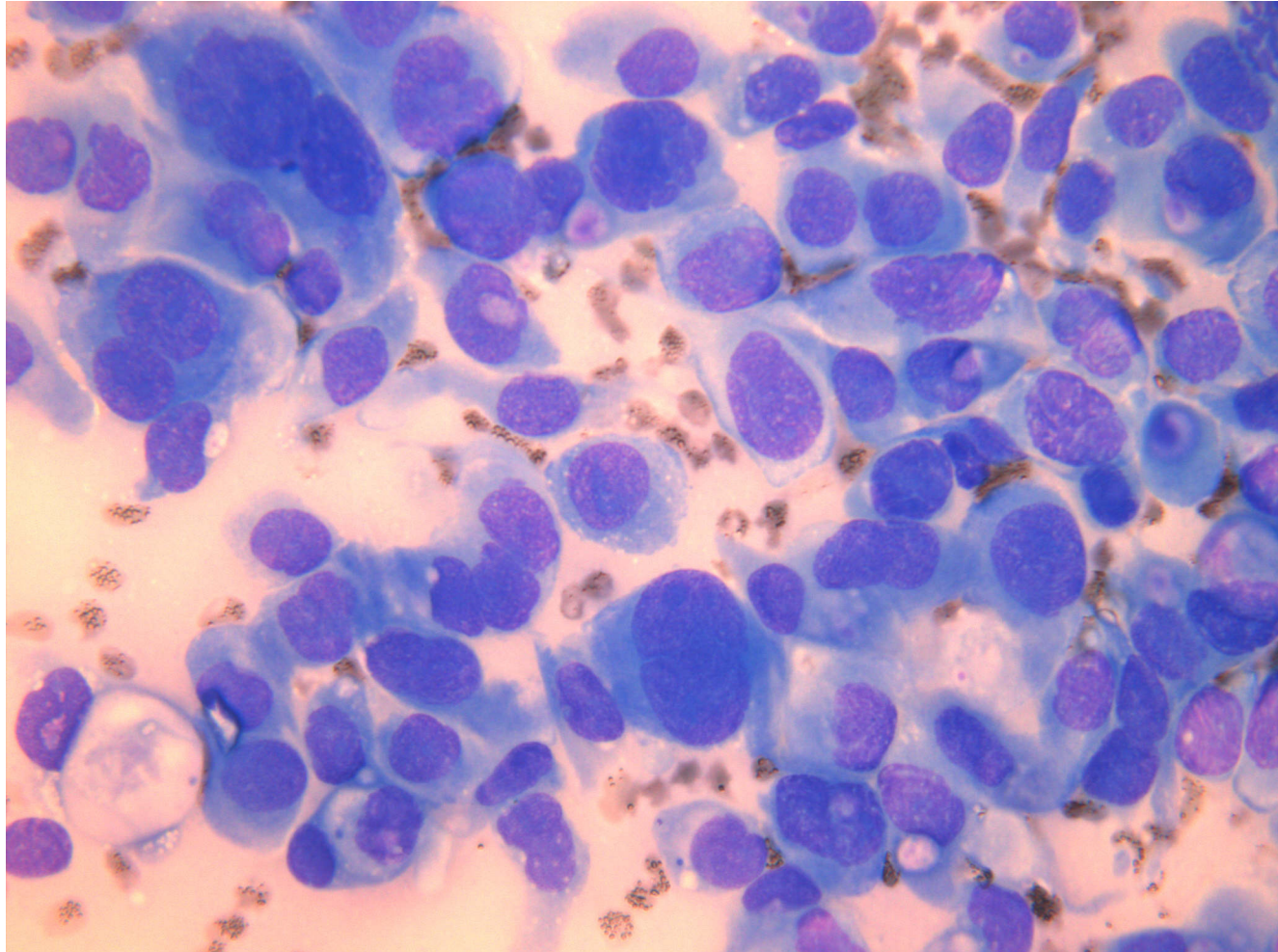
Finnål fra binyre med SCLC



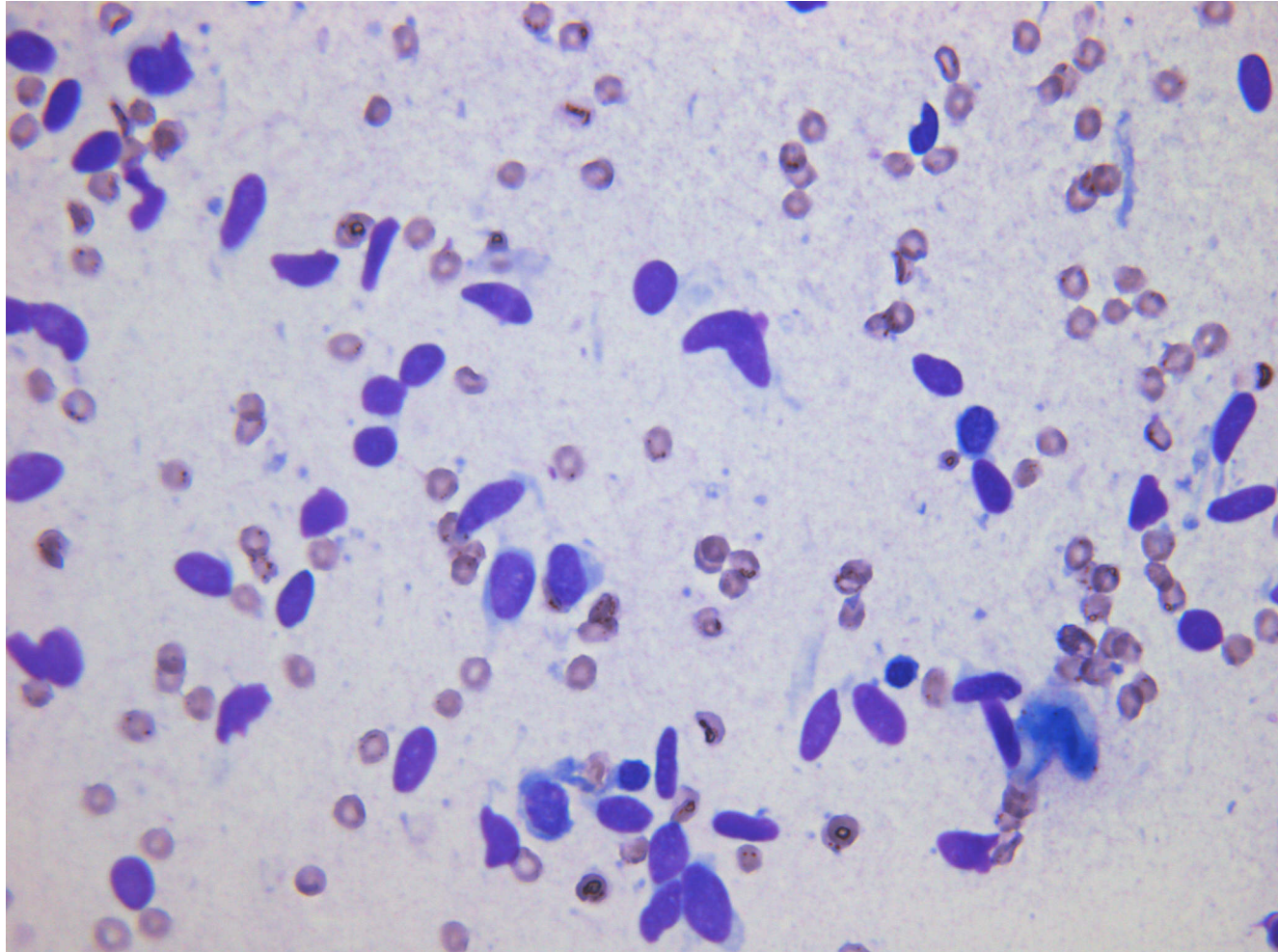
Finnål fra binyre (ingen tumorceller)



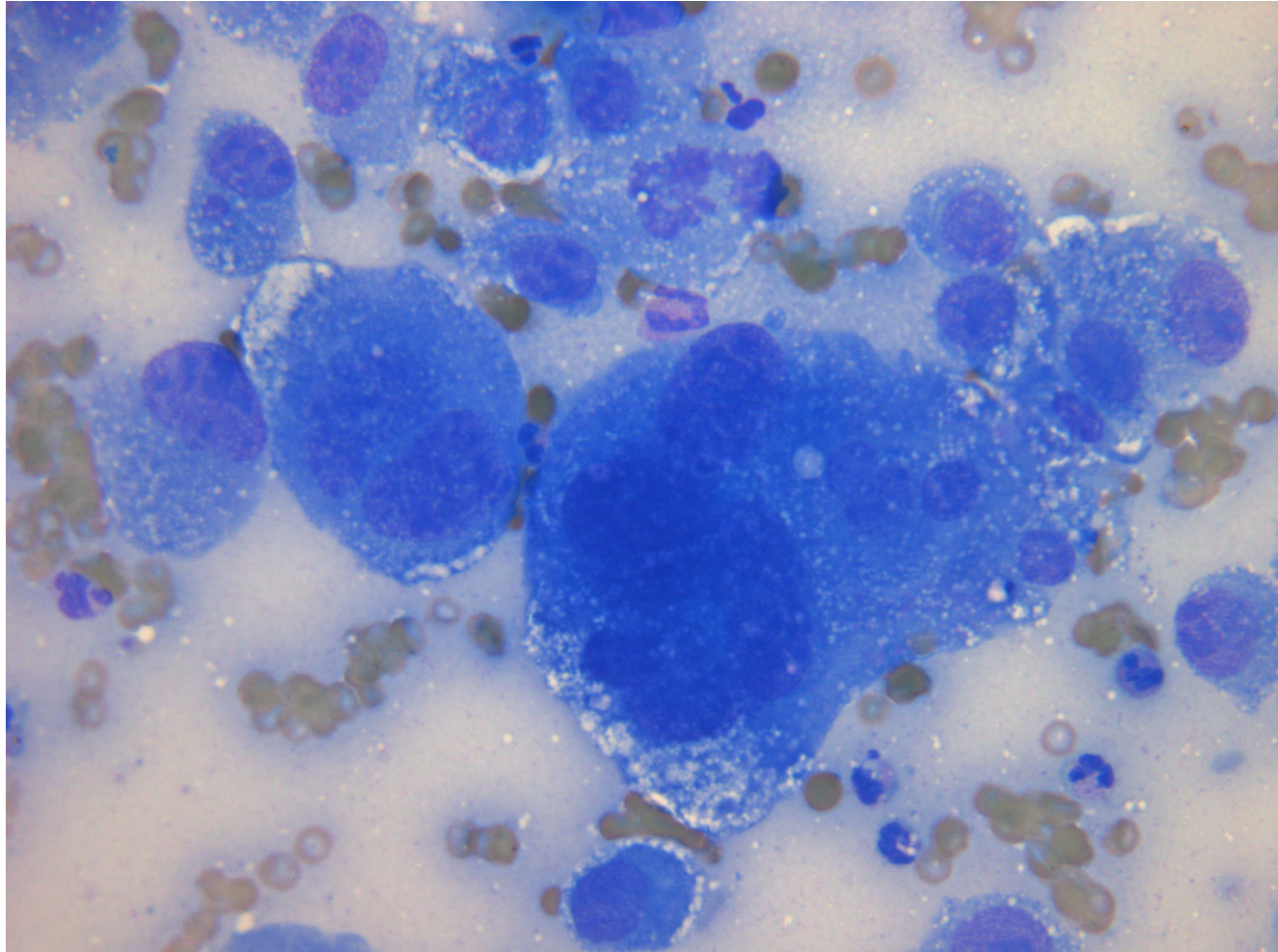
EUS med adenocarcinom



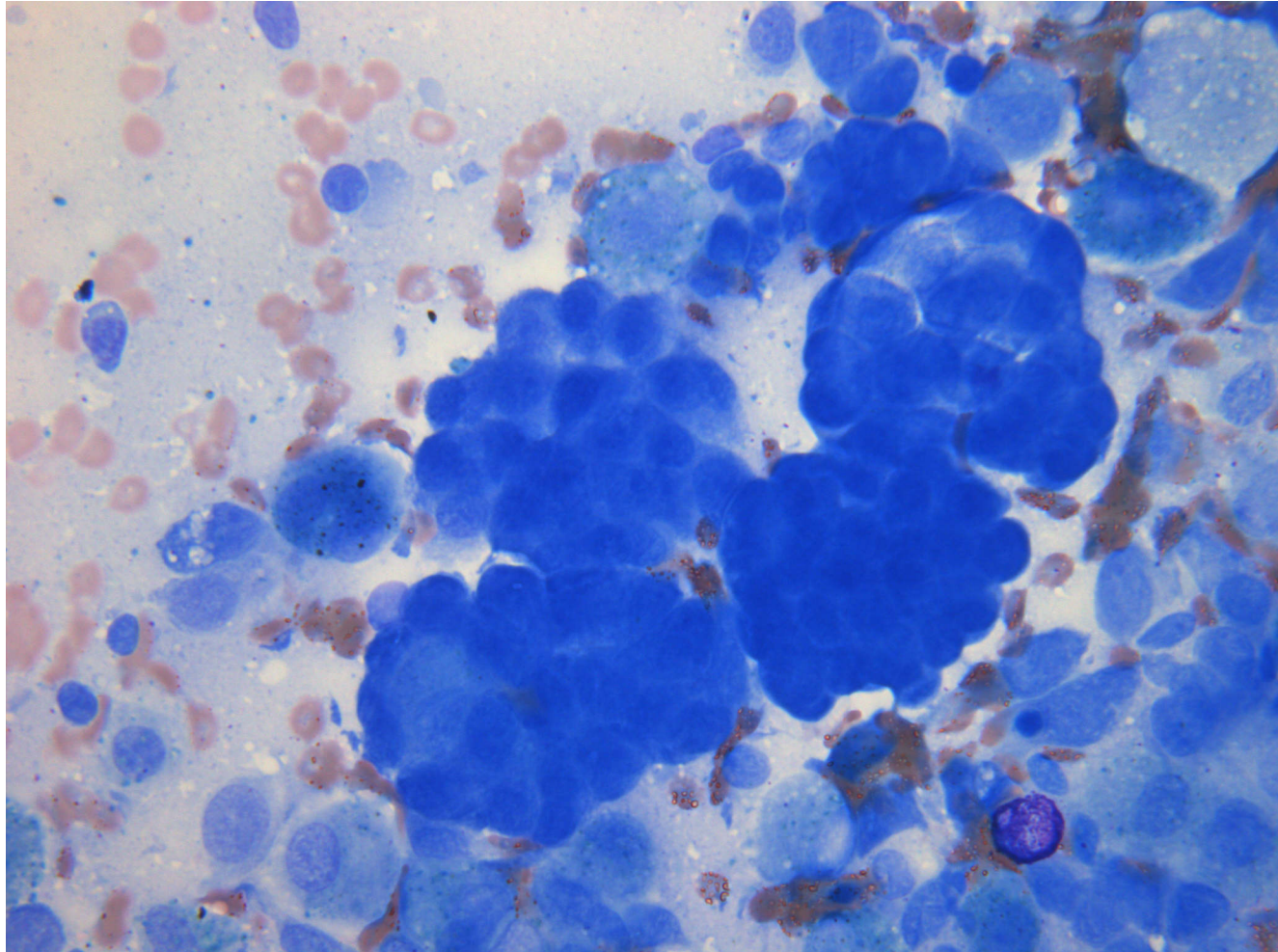
EUS med adenocarcinom



"Finnål" (Dup) med solitær fibrøs tumor

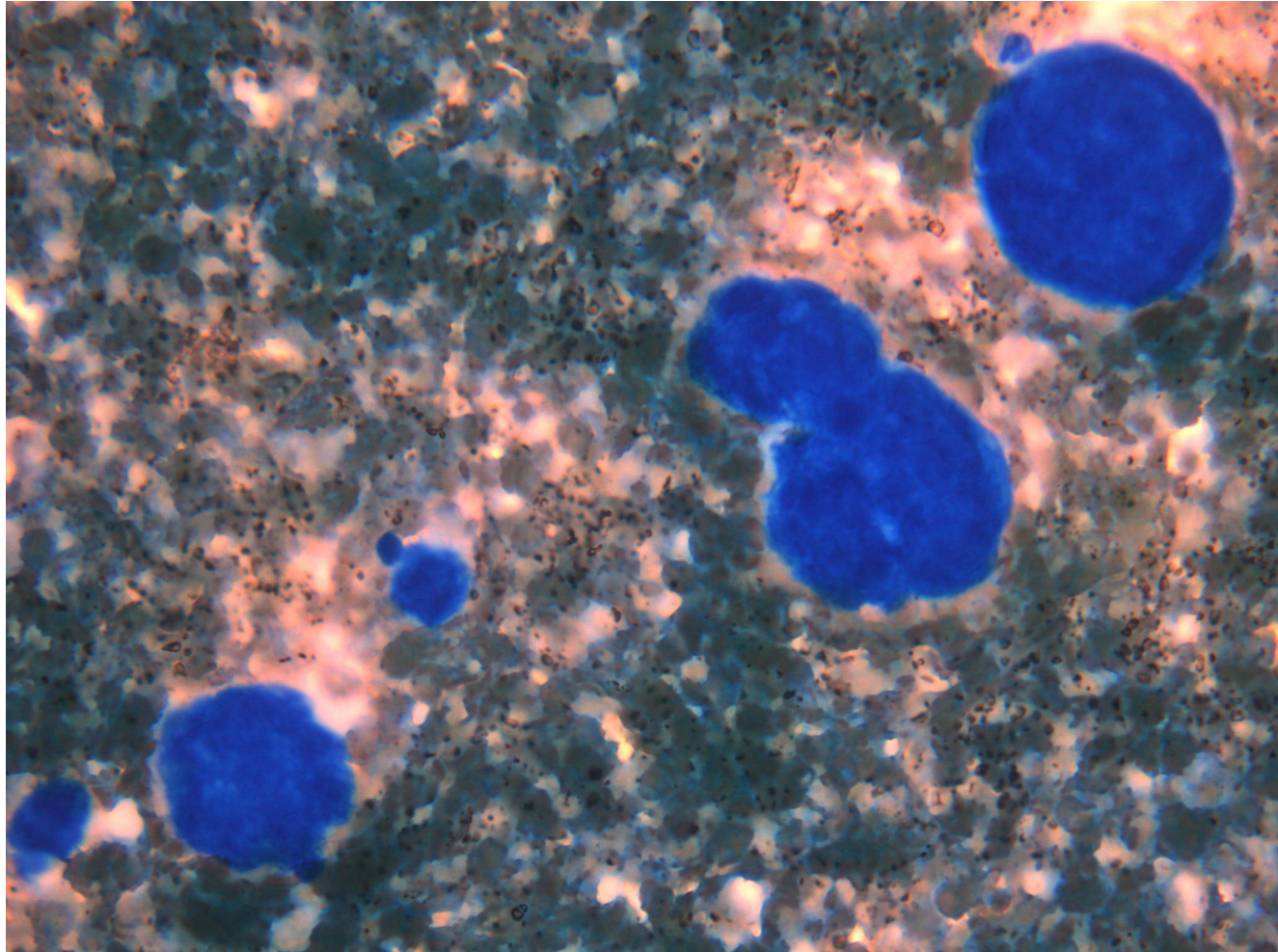


Sarcomatoidt karcinom



"Finnål" (dup fra operationspræparat) med BAC





Blodig pleuravæske med malignt mesotheliom, epithelial type