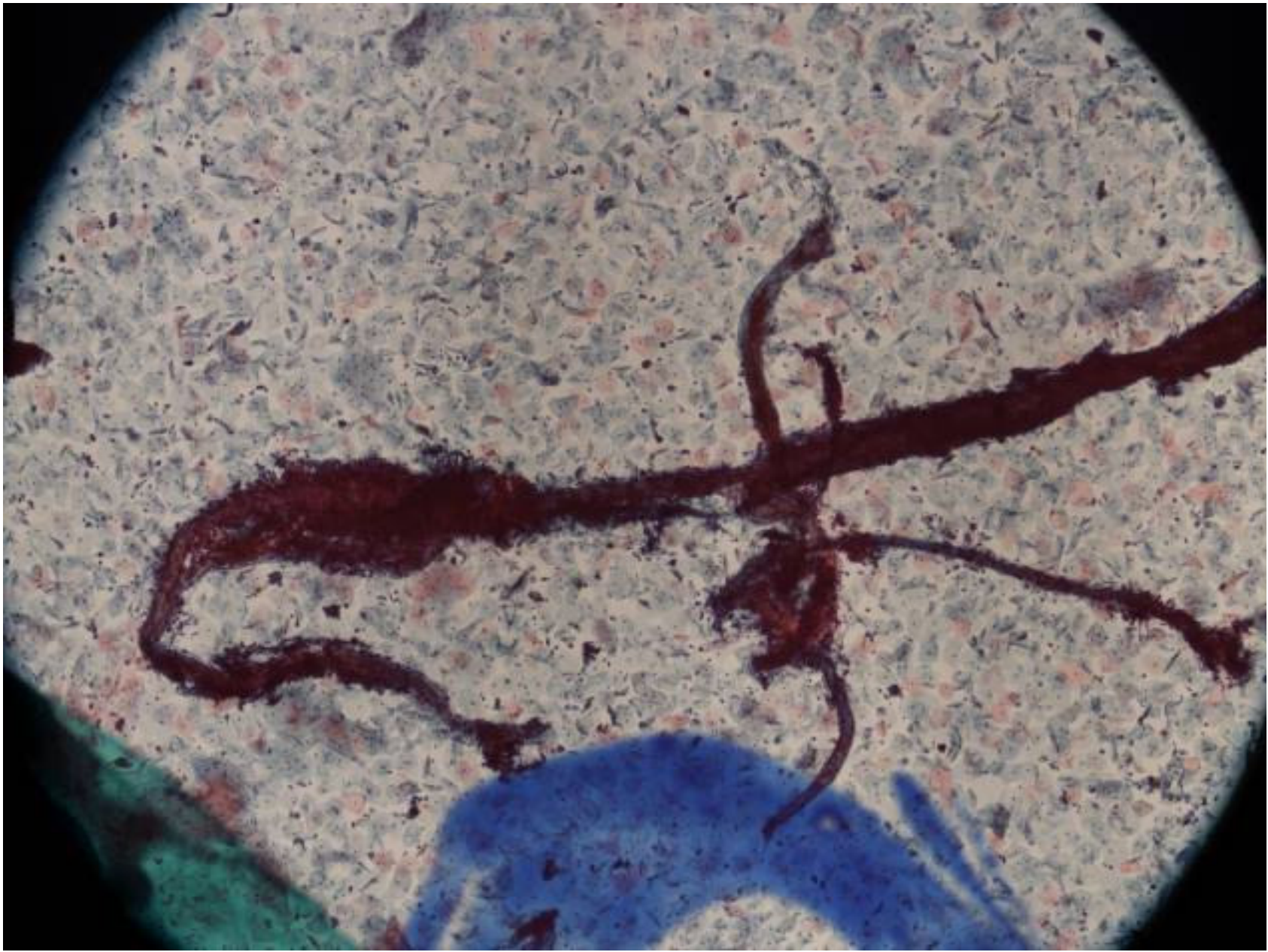


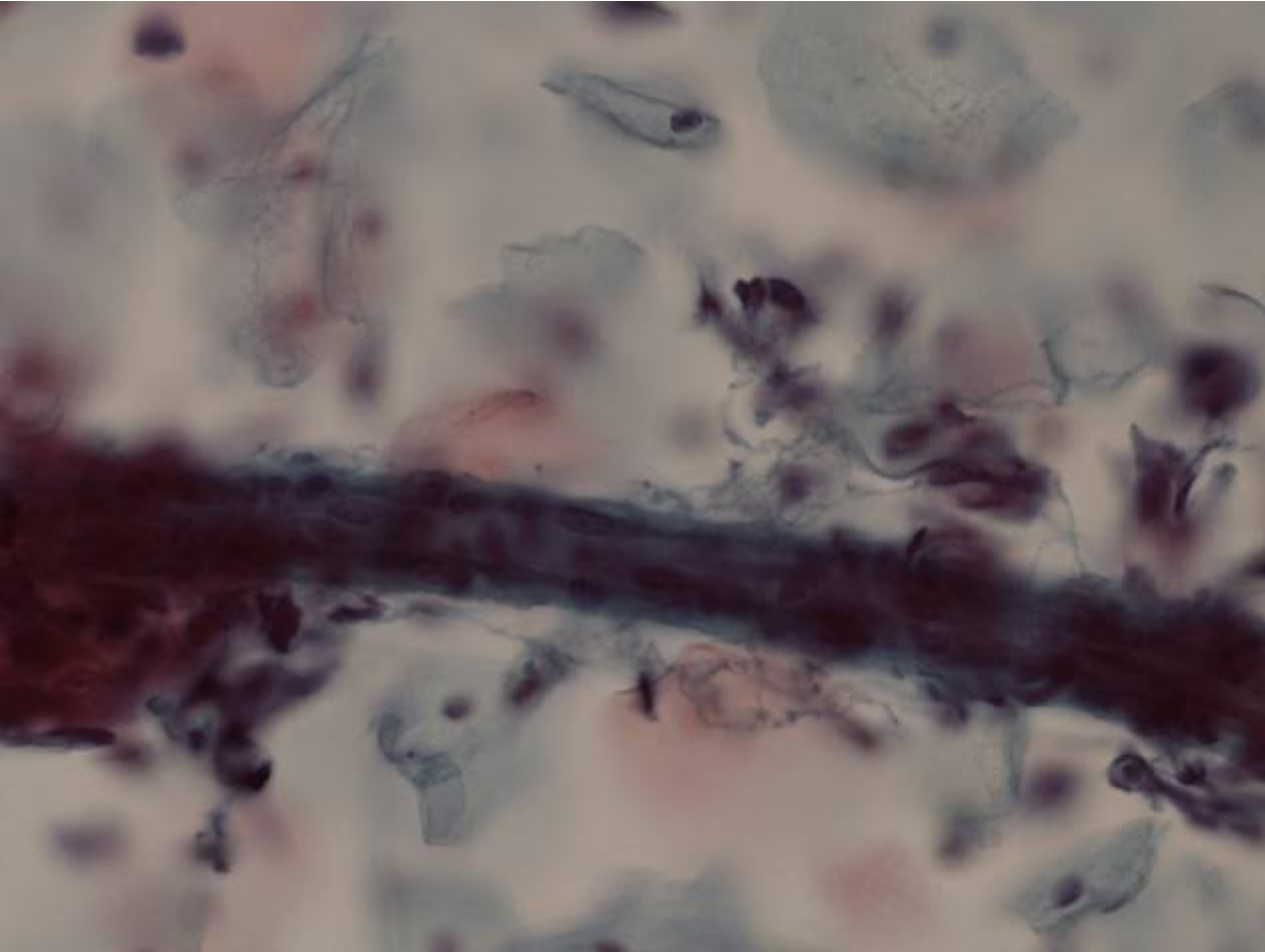
Månedens case februar 2014

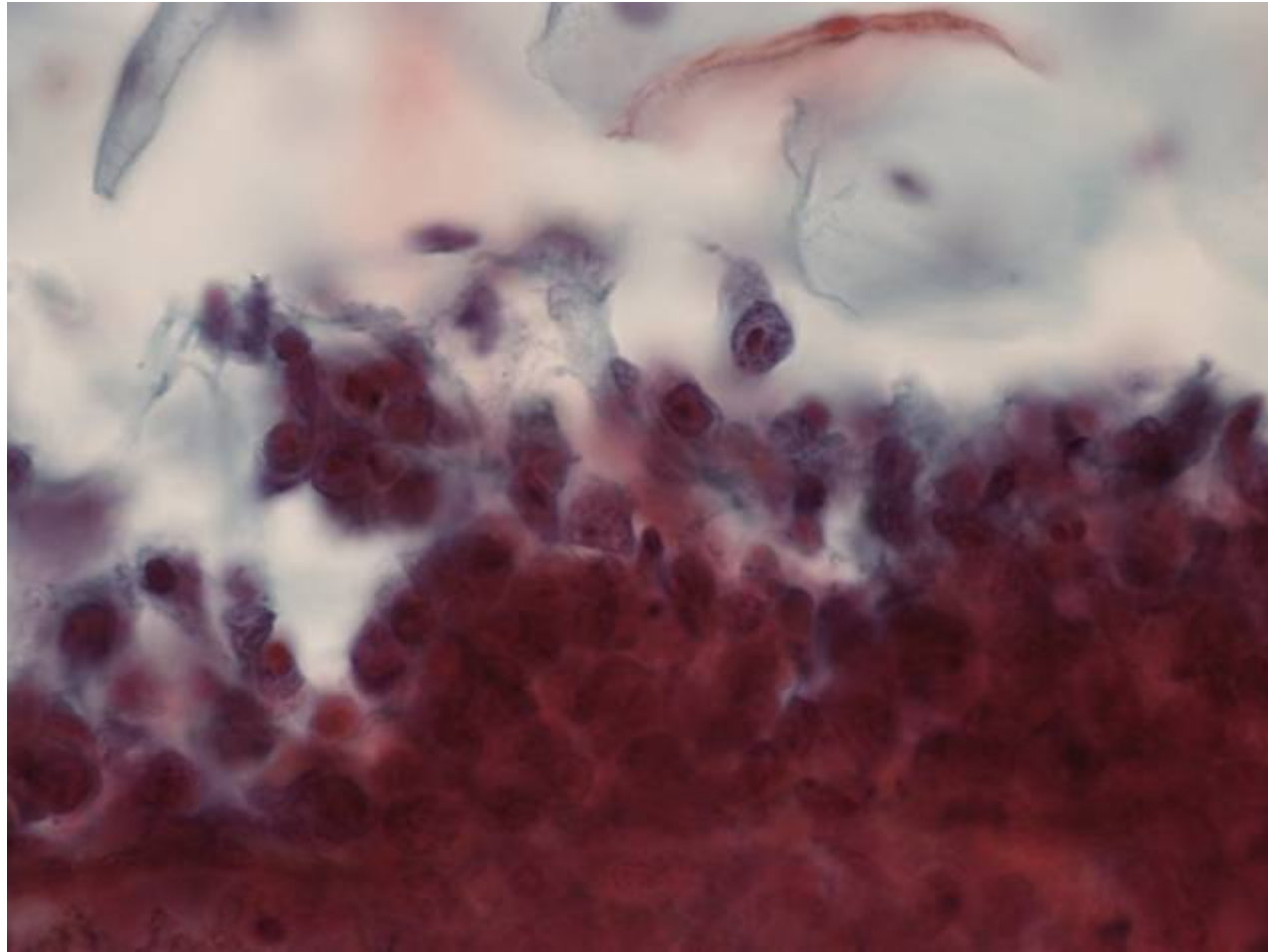
Cervixcytologisk prøve – SurePath
præparation

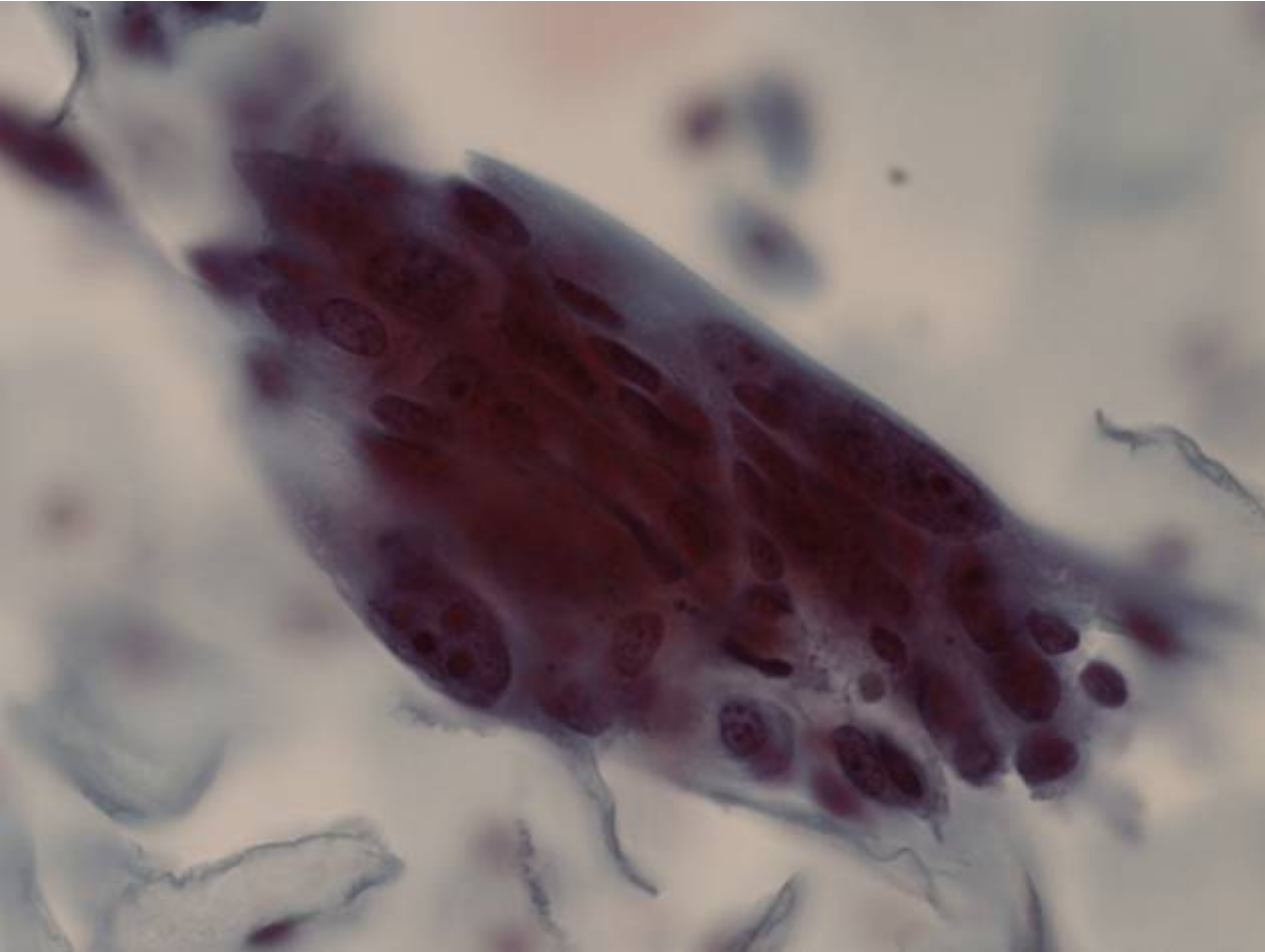
55 årig kvinde

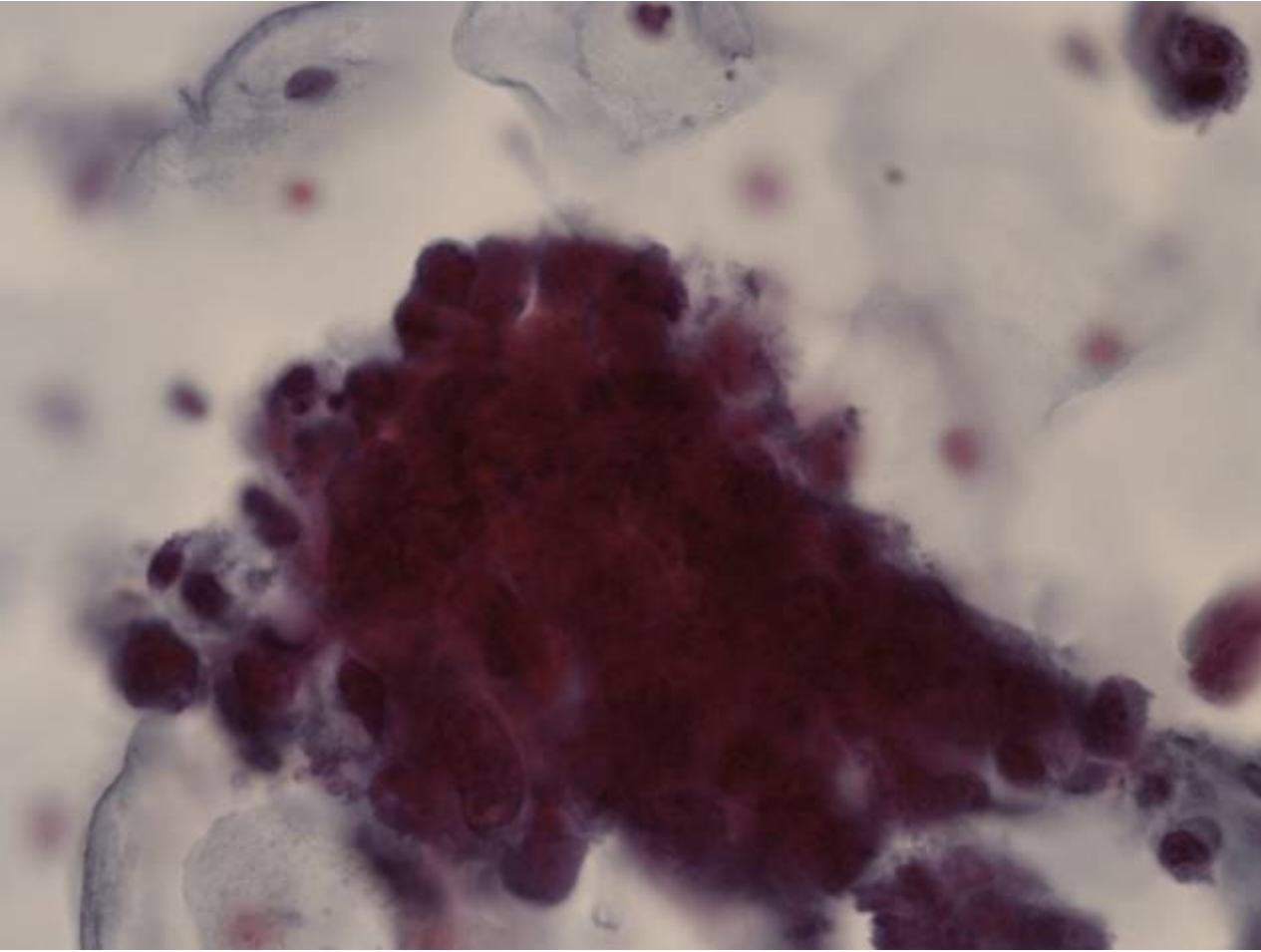
Tidligere normale cellefund

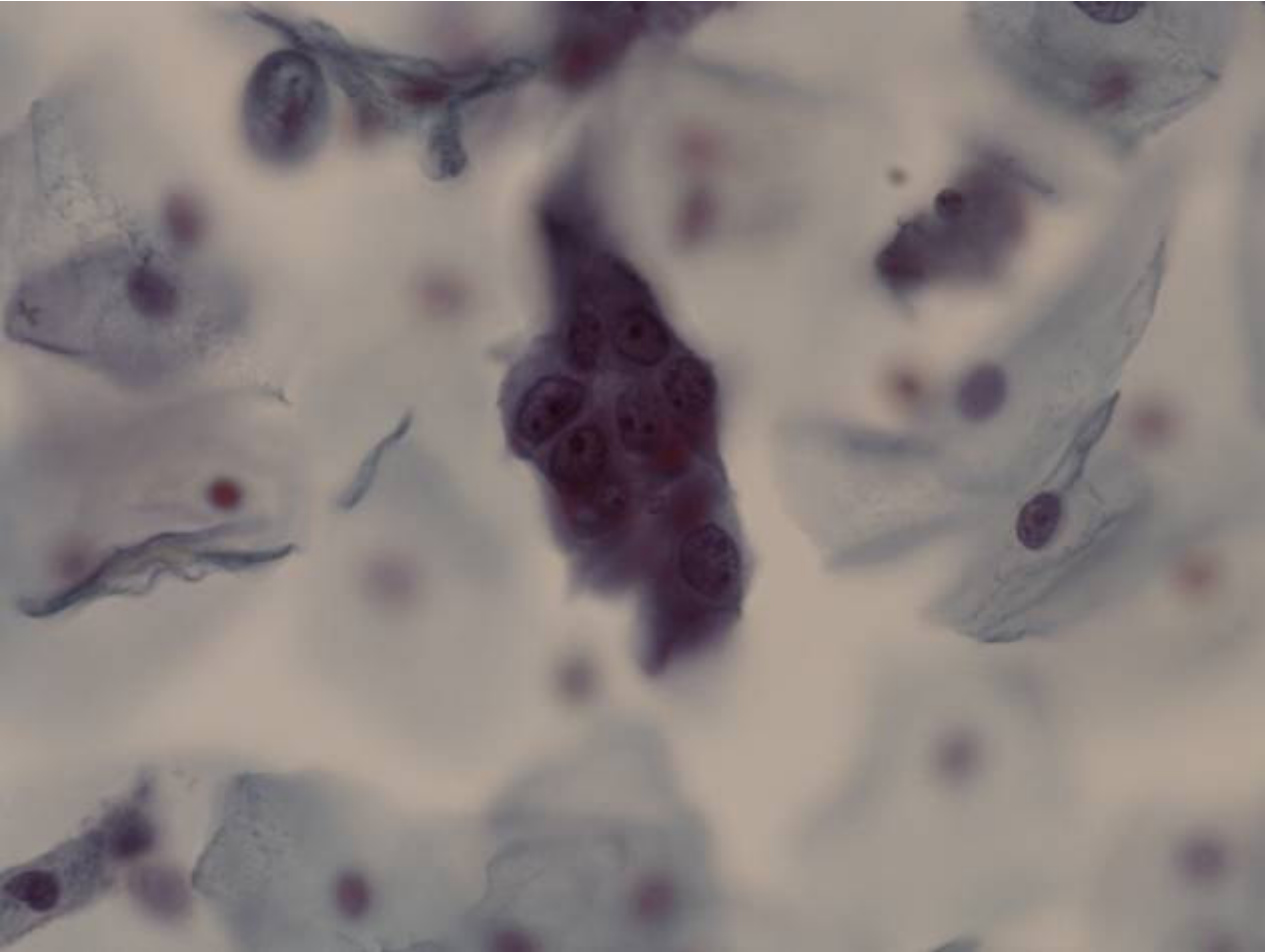




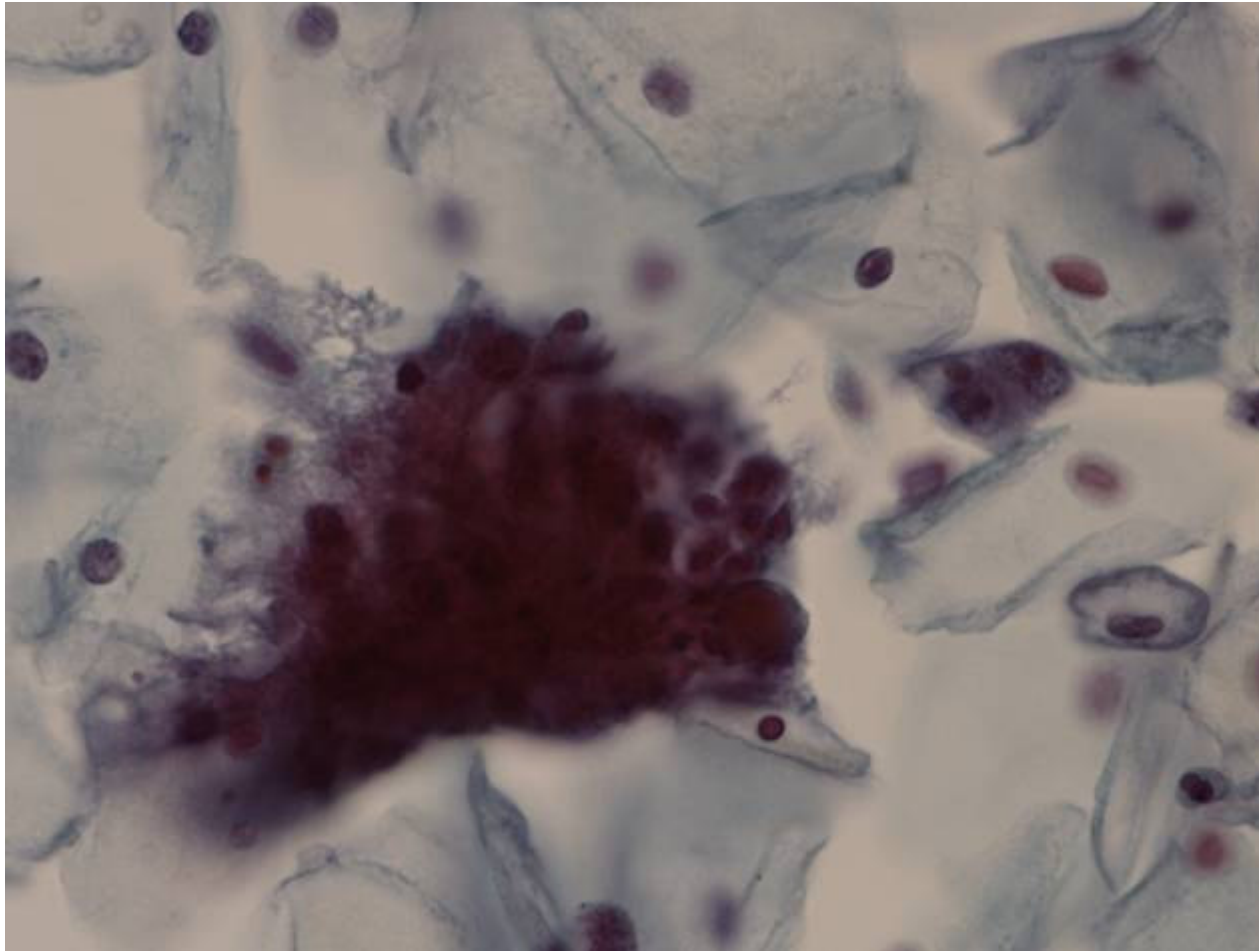








Diagnose?



- Cervixcytologisk prøve diagnose: Karcinom – adenonkracinom obs pro.
- Endometriesug – særdeles lavt differentieret karcinom med udtalt sarkomatoid uddifferentiering
- Hysterectomi Clear cell adenokarcinom. Onkocytær variant. Stedvist med sarkomatoid uddifferentiering. Udgangspunkt i endometriet. Der ses også områder med atypisk kompleks hyperplasi.