

Månedens case - cervixcytologi

Maj 2014

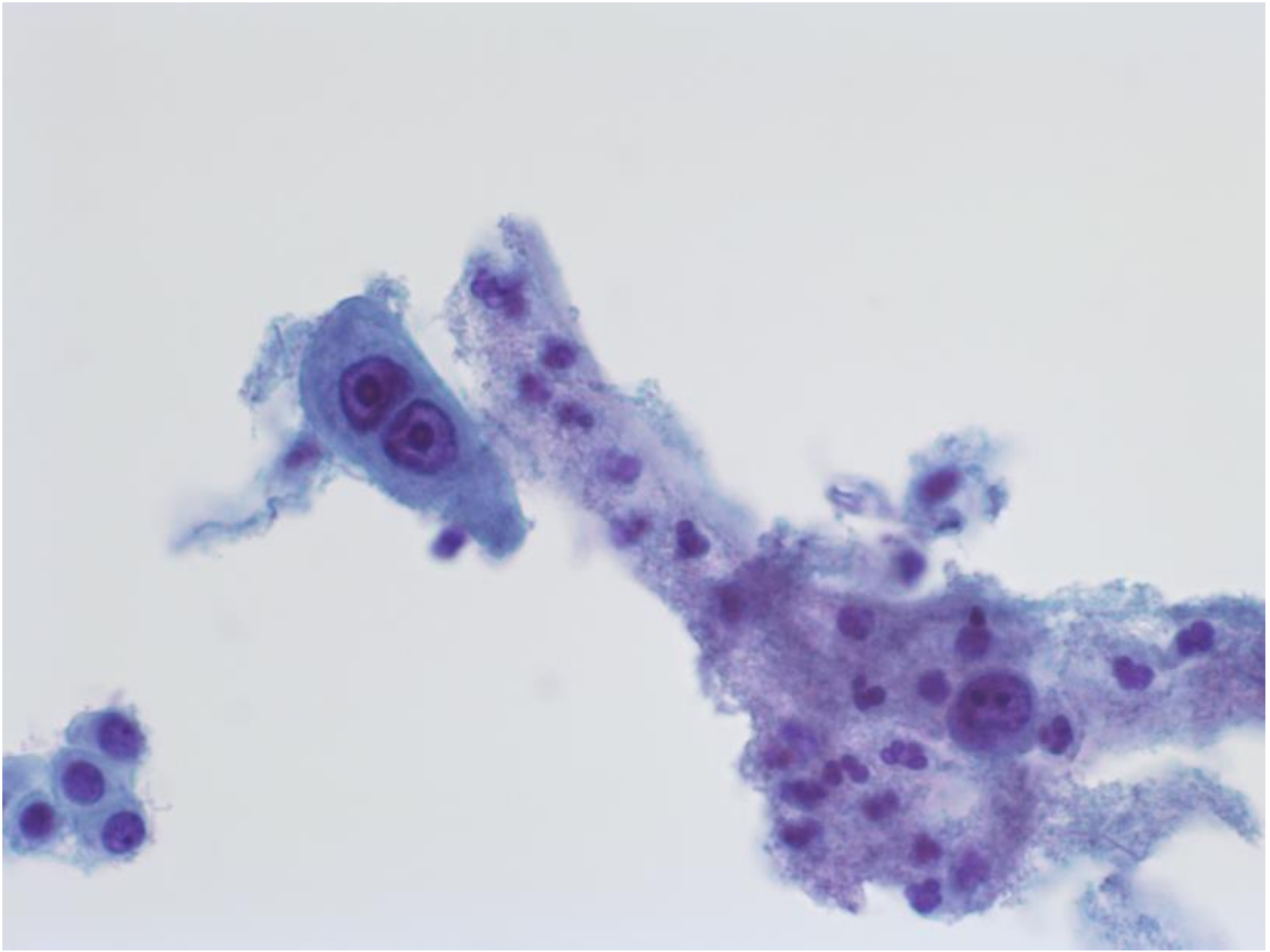
Udlånt af Klinisk Patologi, Vejle Sygehus

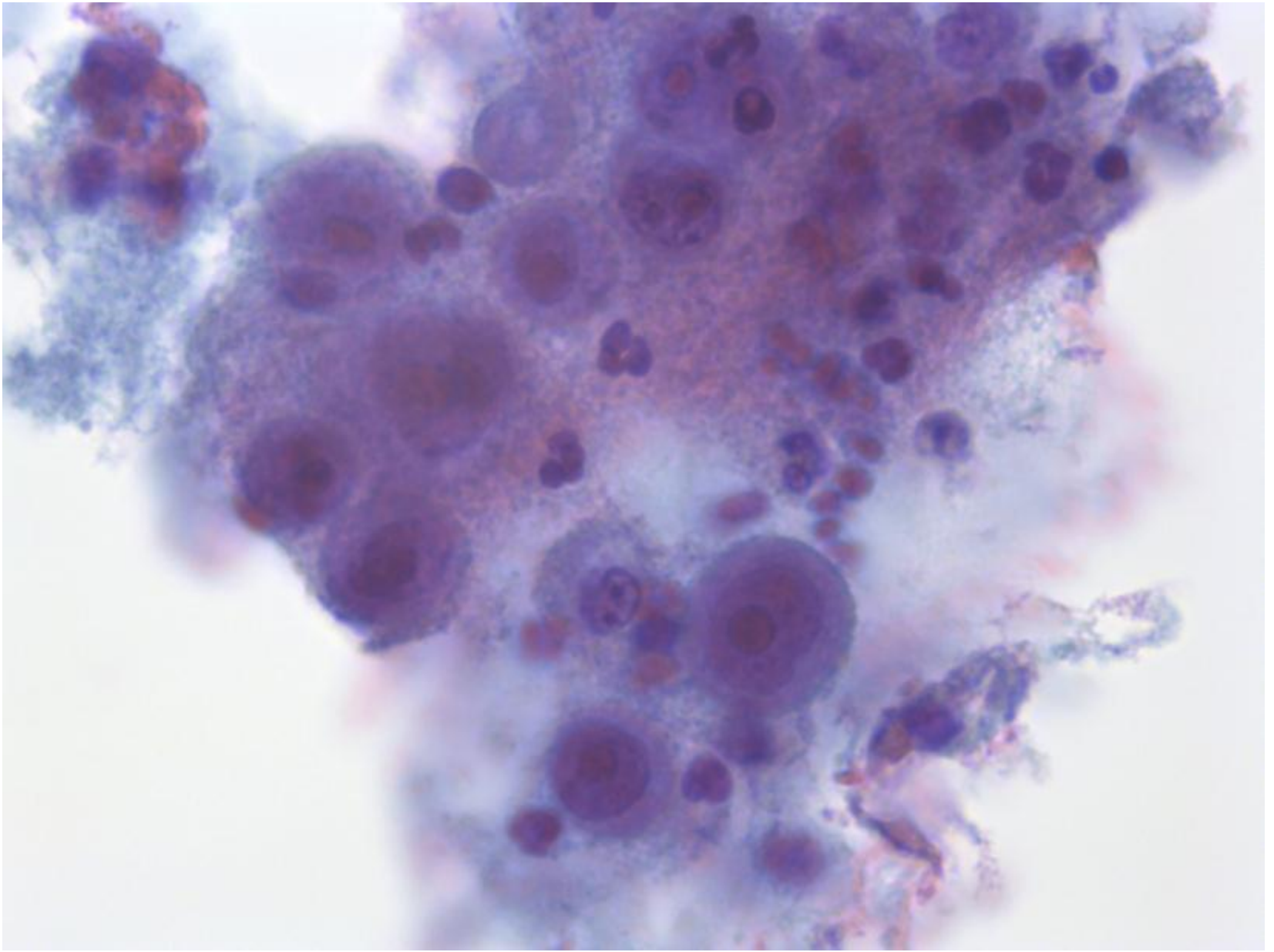
&

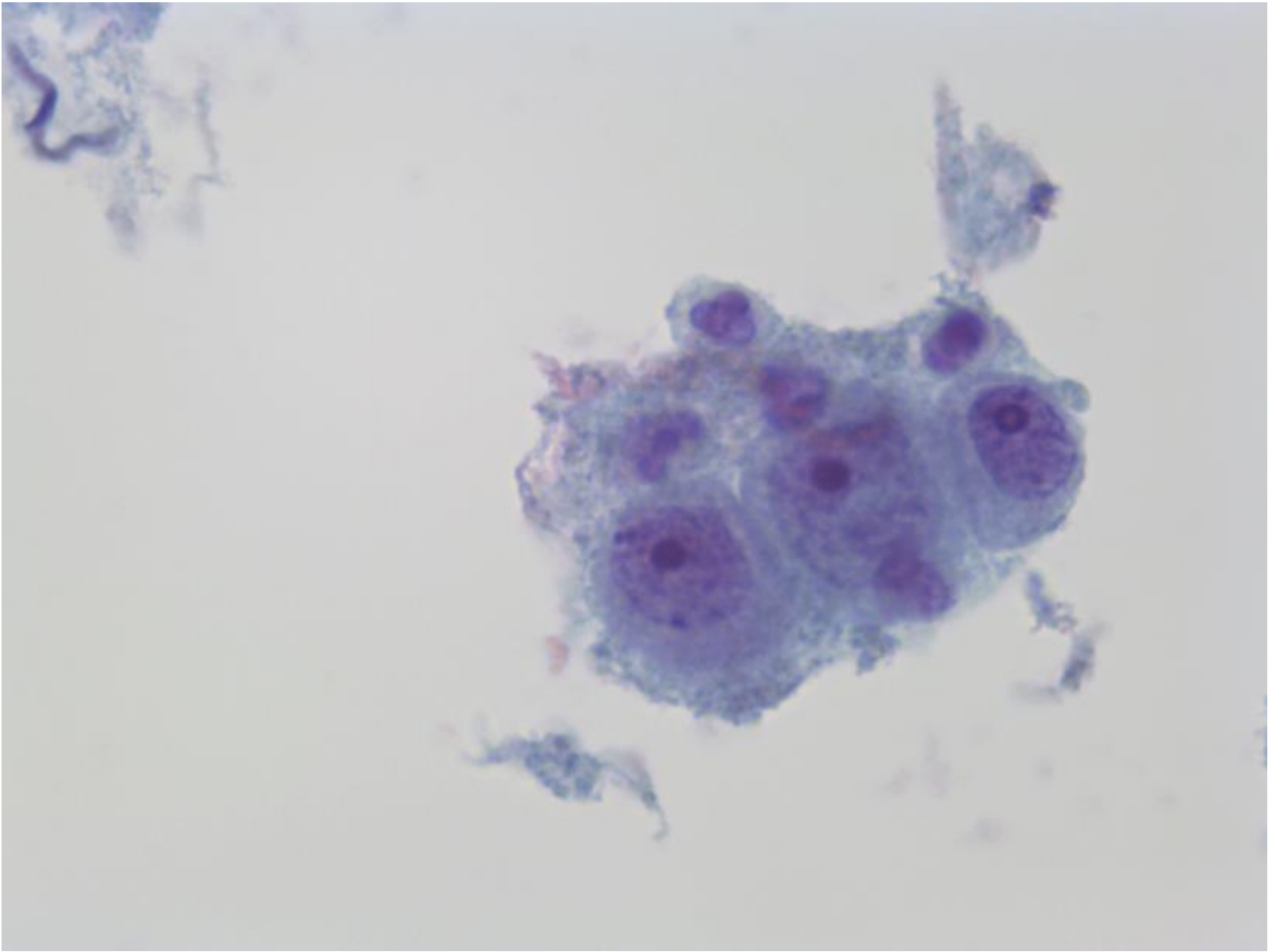
Afdeling for Klinisk Patologi, OUH

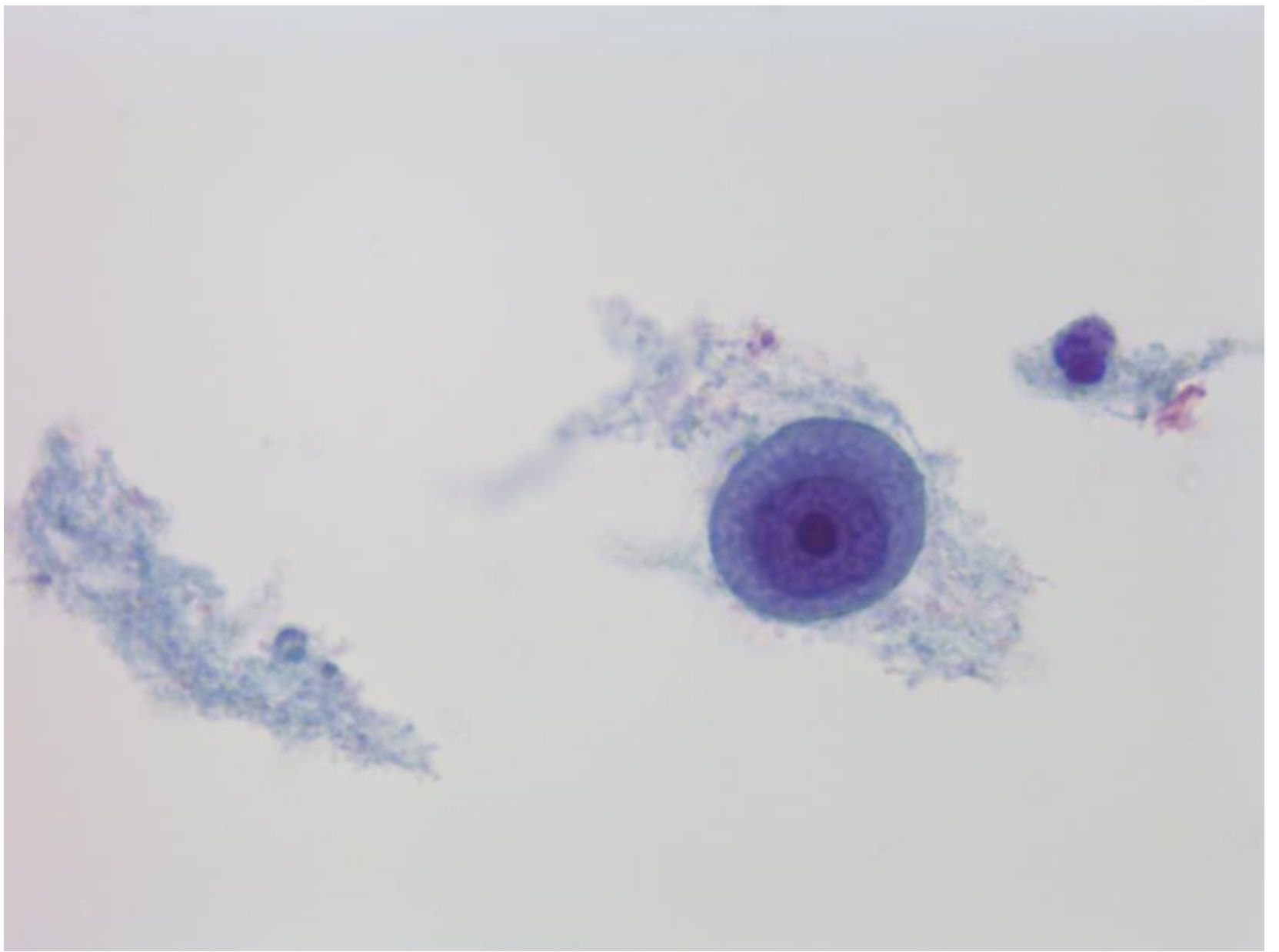
Kliniske oplysninger:

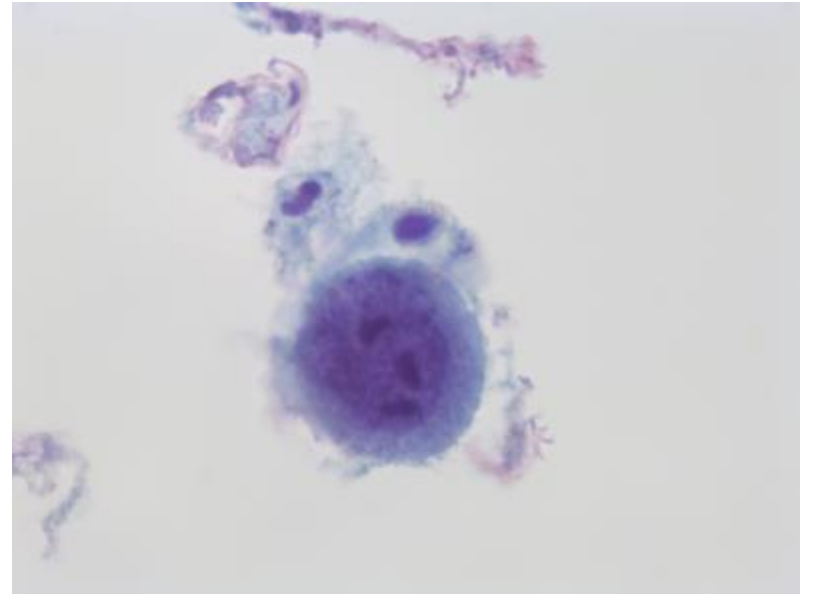
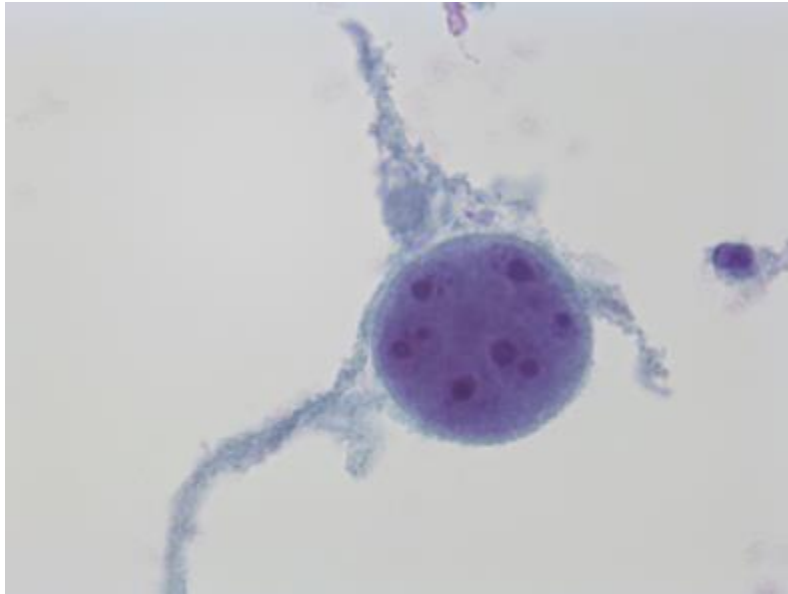
Cytobørstepreparat (ThinPrep) fra 70 årig kvinde, debutprøve, obs. cancer uteri.





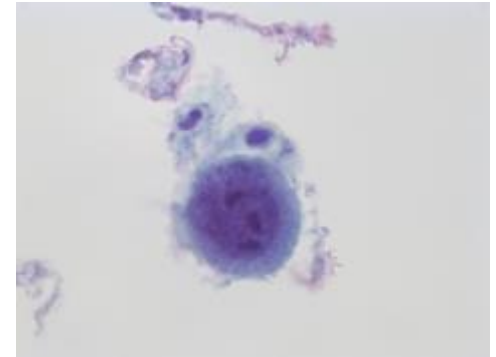






Diagnose: maligne tumorceller

- Cellerne er overvejende enkeltliggende
- Høj K/C ratio
- En til flere prominente centrale nukleoler
- Flerkernede maligne tumorceller
- Cytoplasma velafgrænset og homogent
- Tumordiatese

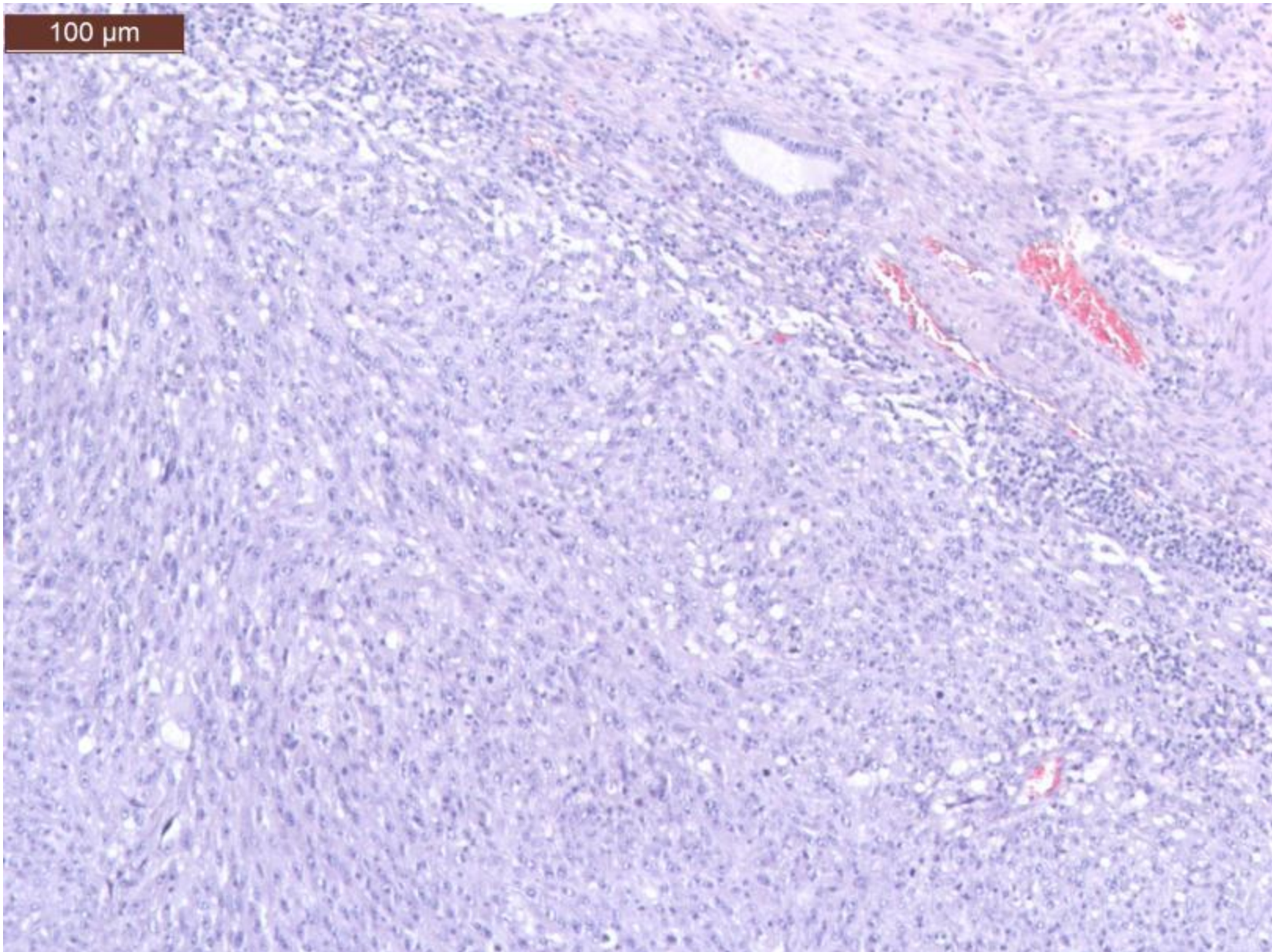


- **Supplerende oplysning:**

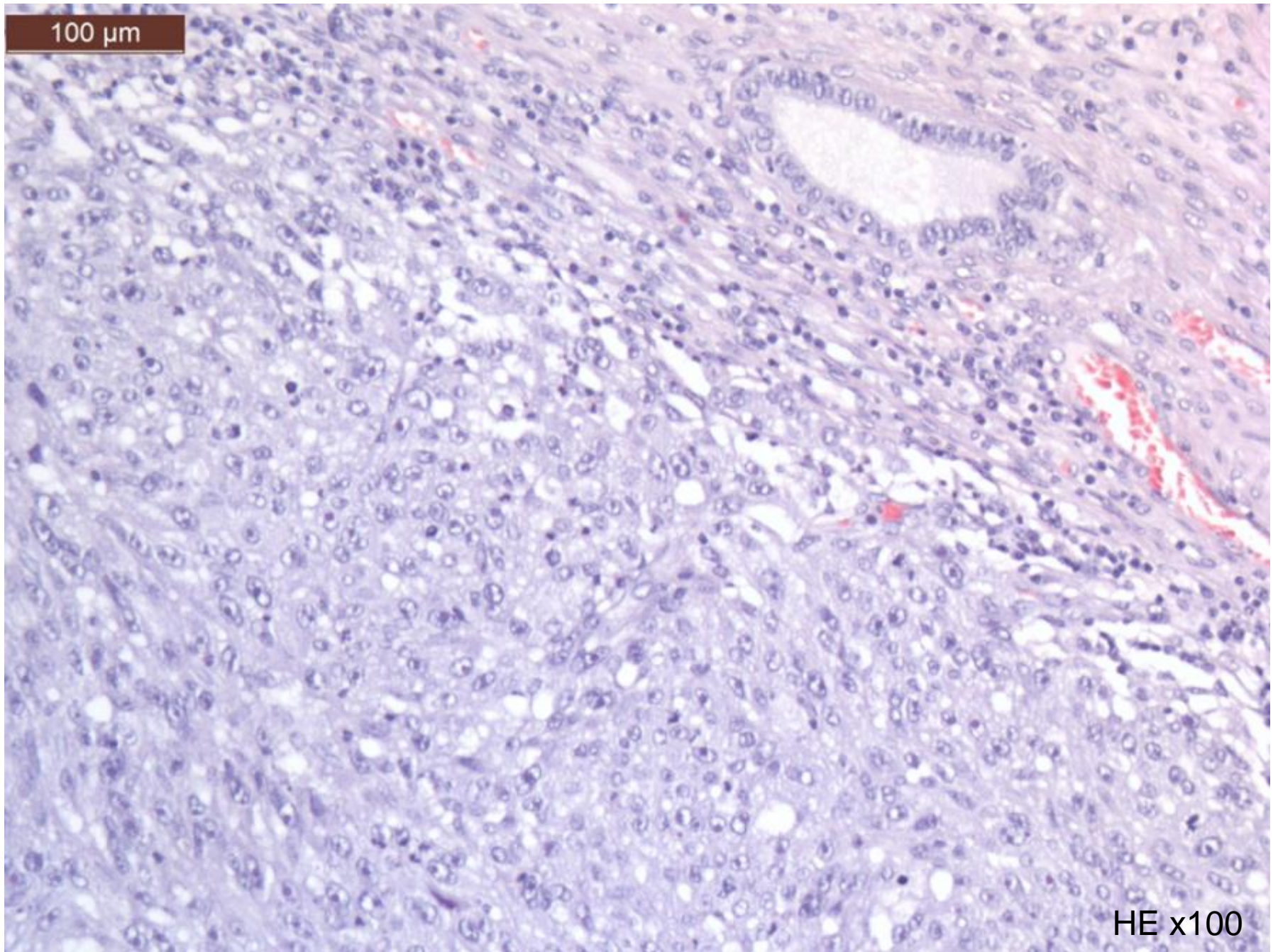
Patienten har kendt dissemineret malignt amelanotisk melanom.

Patienten bliver efterfølgende hysterektomeret.

Snit fra endometrium HE x 50

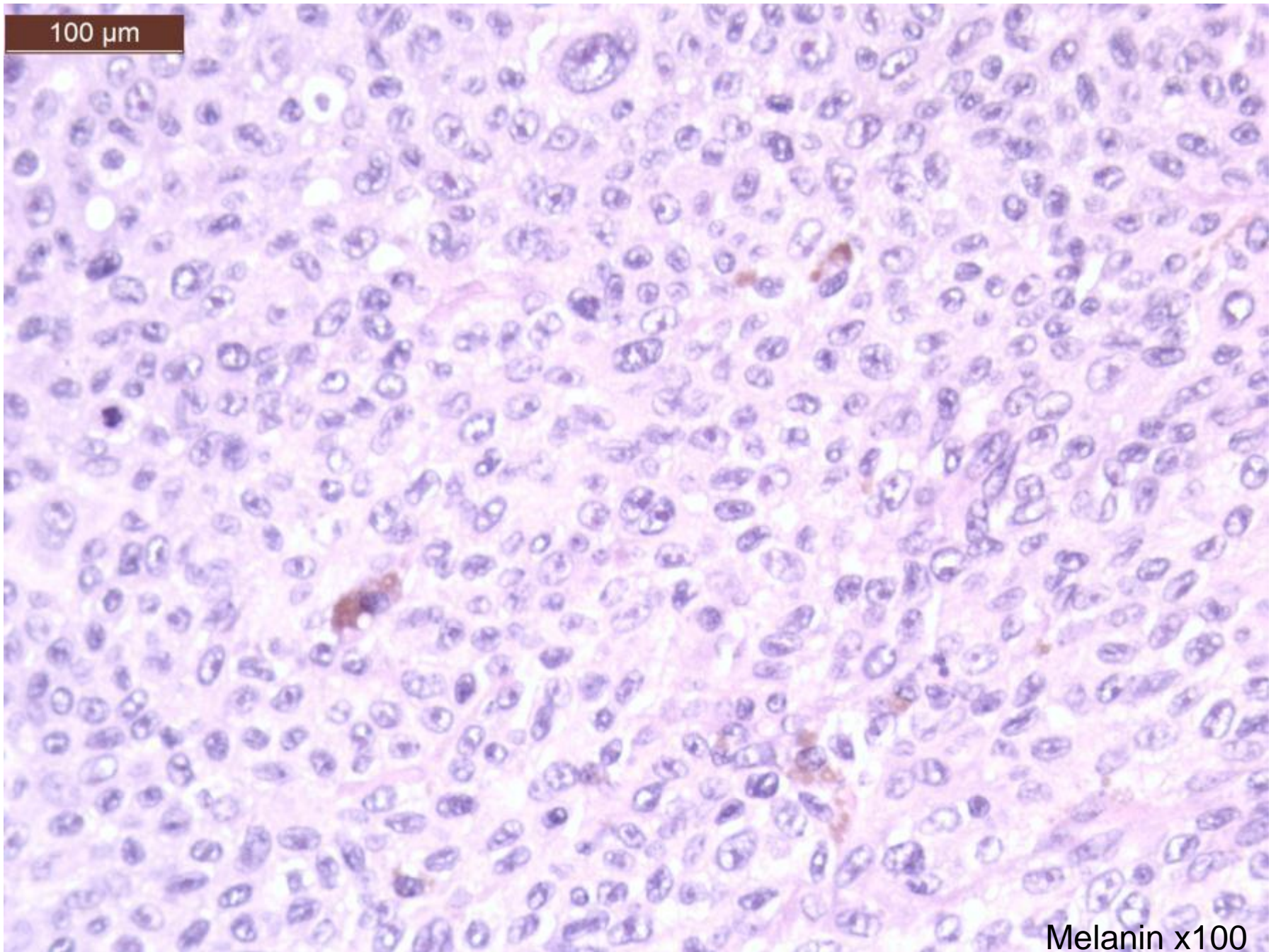


100 μ m



HE x100

100 μ m



Melanin x100

100 μm

S100 x100

