



# Urinkursus

---

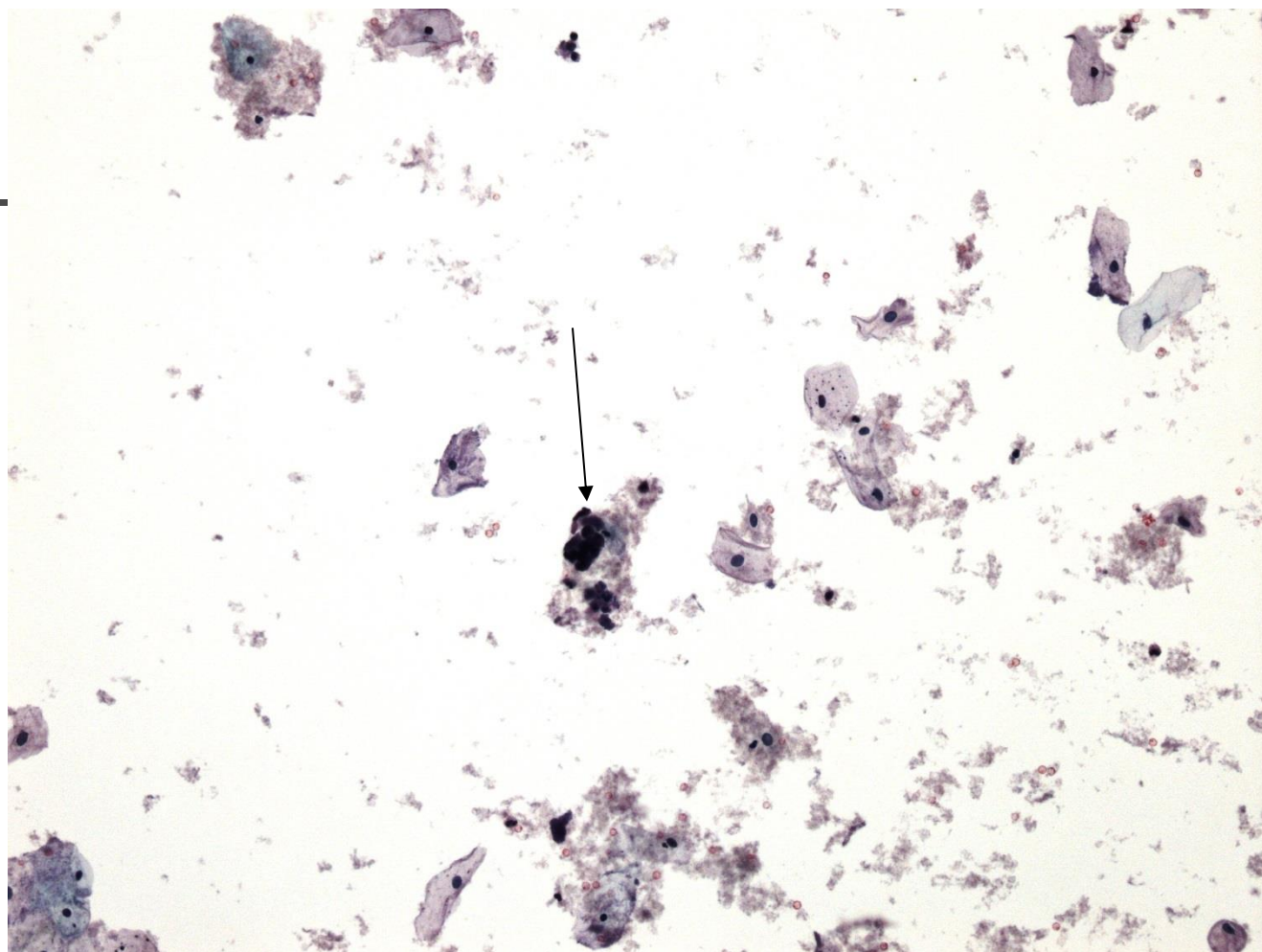
Regionshospitalet Randers  
Månedens case september 2013



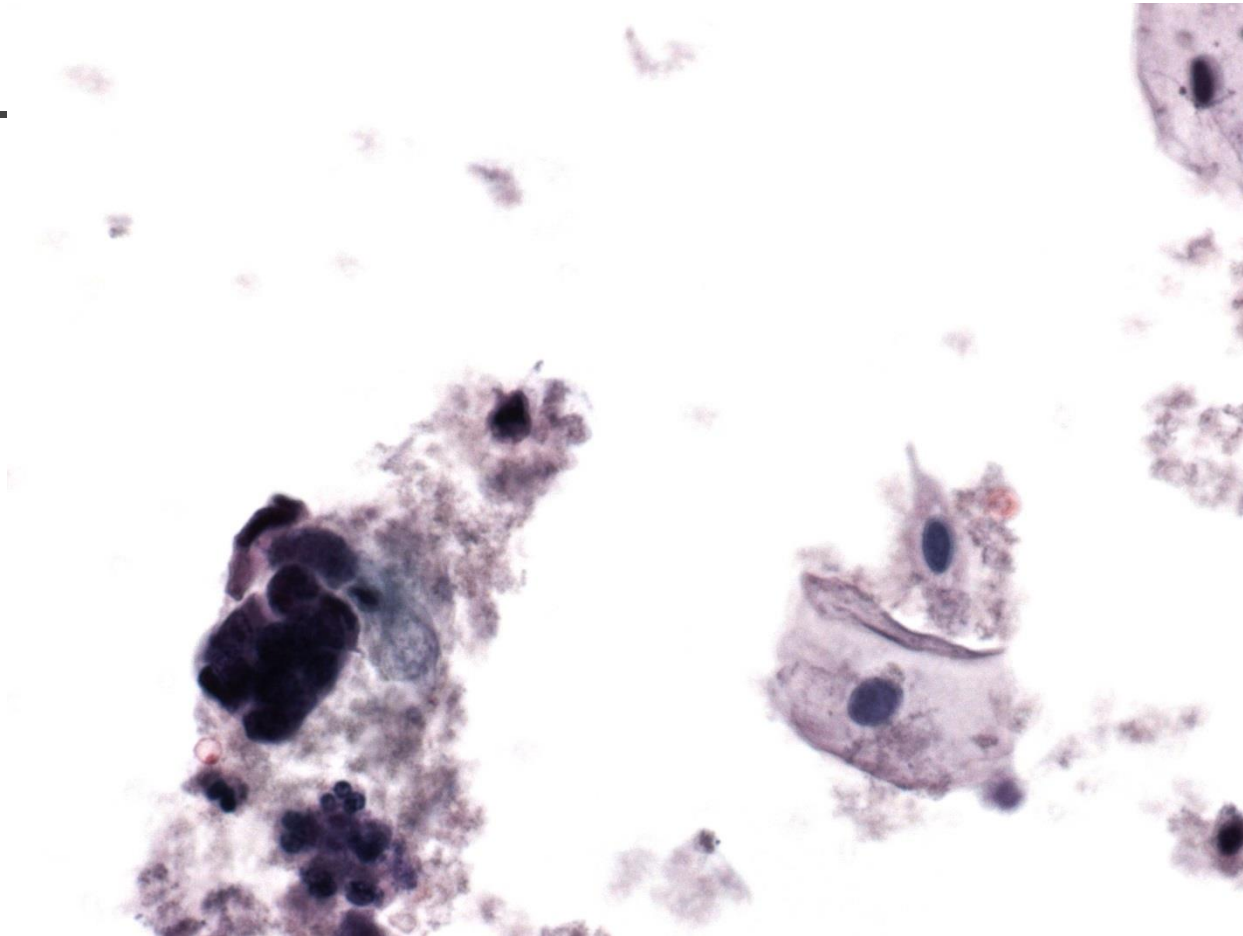
# Kliniske oplysninger

---

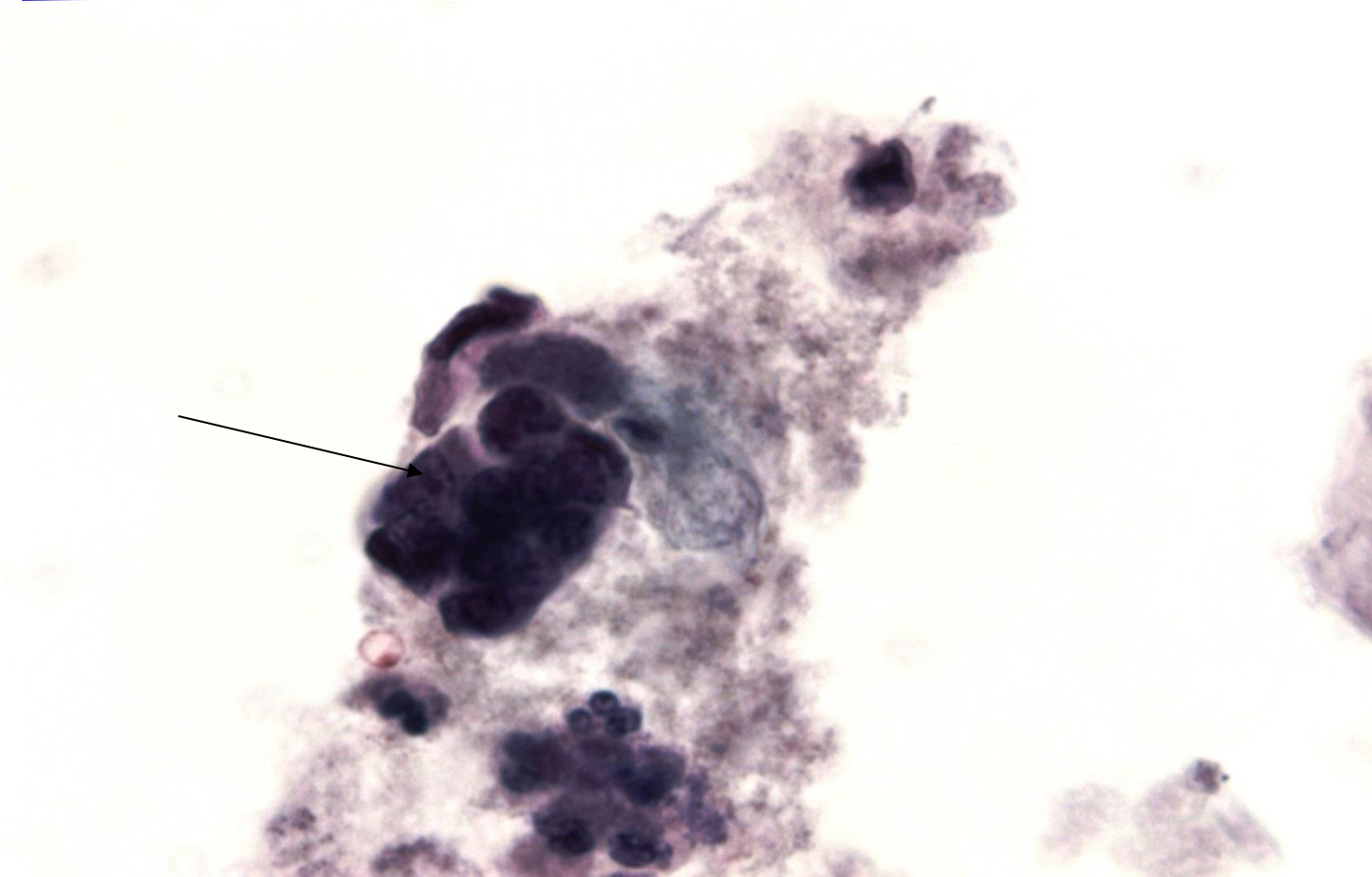
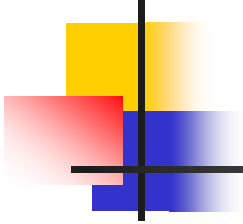
- 45-årig kvinde
- Prøvemateriale: urin
- Mikroskopisk hæmaturi



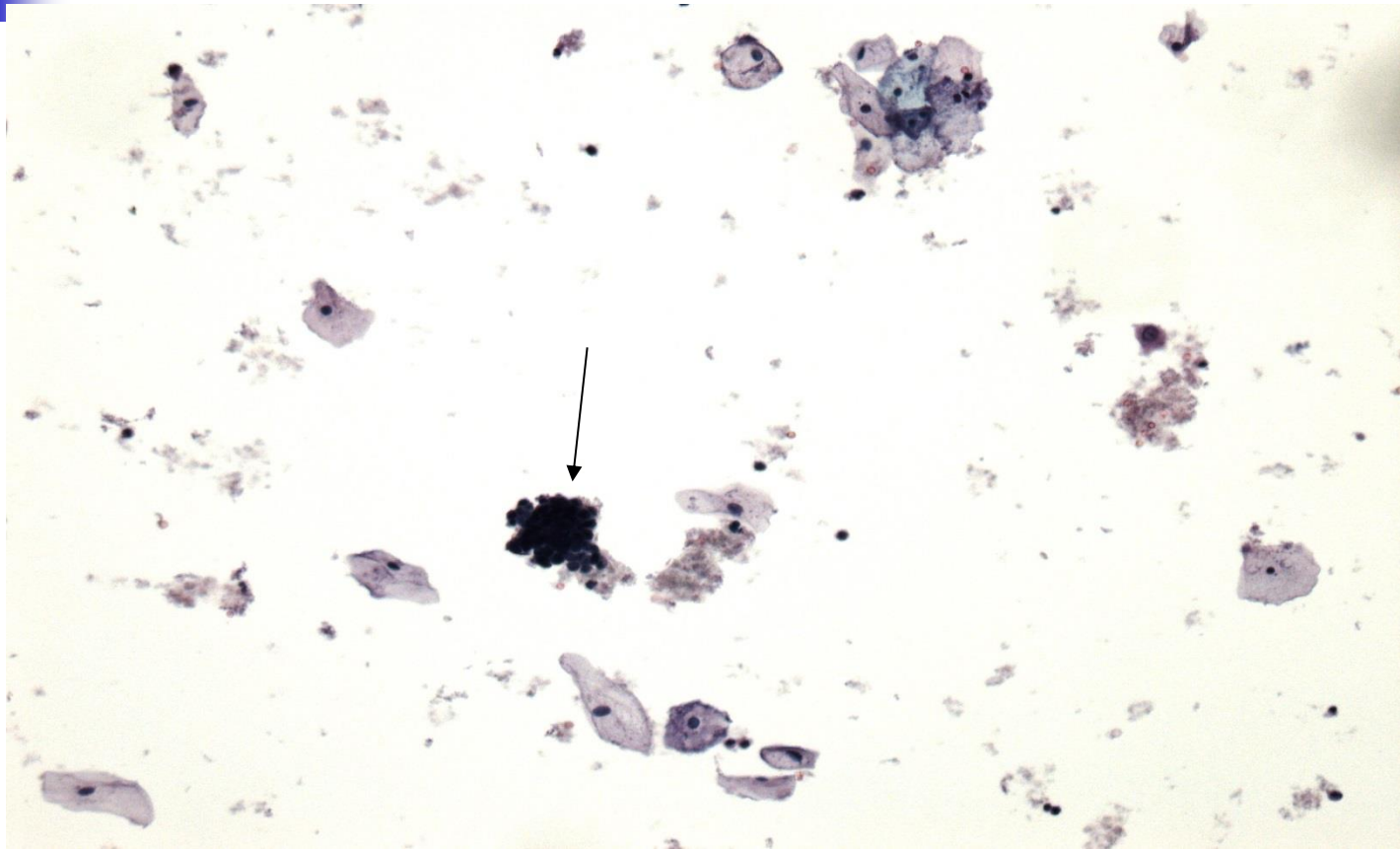
ThinPrep. Objektiv x10. Papfarvning. Oversigtsbillede af urinprøven, som viser tilblending af pladeepithelceller, erythrocytter, lidt debris og en tæt cellegruppe.



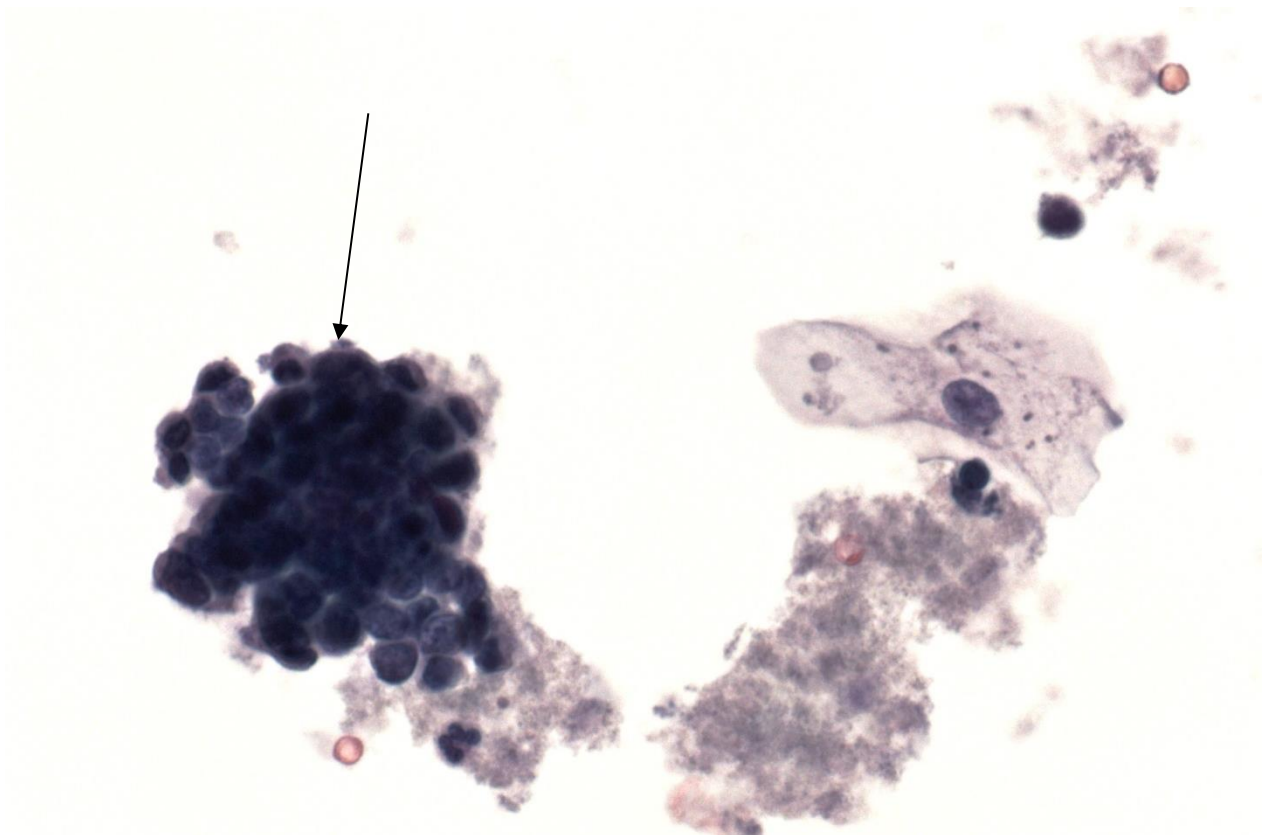
ThinPrep objektiv x 40 papfarvning Der ses en cellegruppe med hyperkromatisk kerner. Der ses moulding



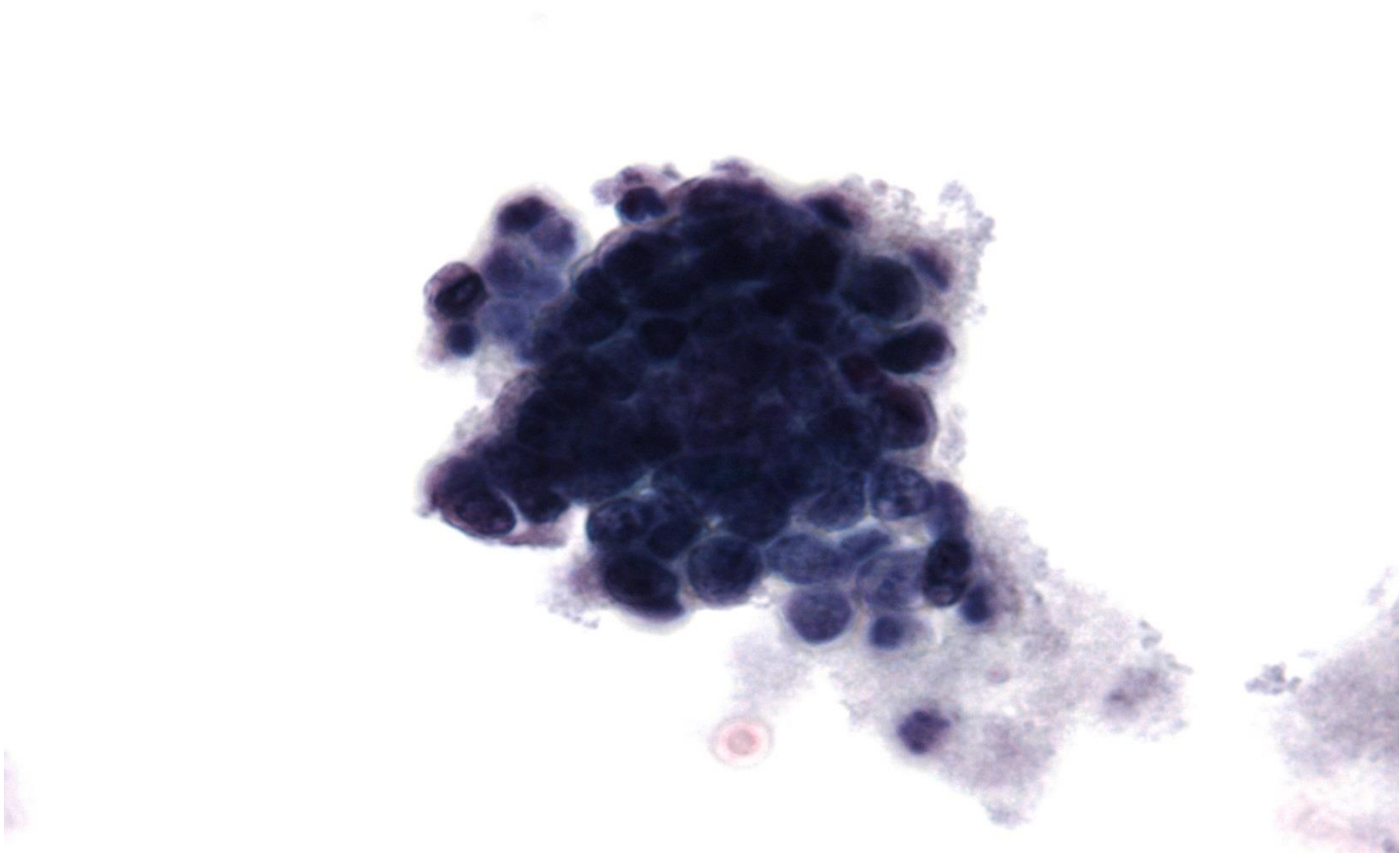
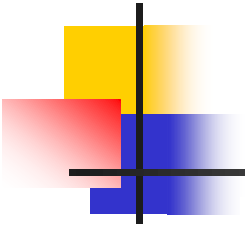
ThinPrep. Objektiv x 60 Papfarvning. I enkelte kerner ses nukleoler.



ThinPrep. Objektiv x10. Papfarvning.



ThinPrep. Objektiv x40. Papfarvning. Syncytiel lejret gruppe med grov kromatinstruktur.



ThinPrep. Objektiv x60. Papfarvning. Ensartet kernestørrelse





# Cytologisk diagnose

---

- Malignitetssuspekterede celler
- Overvej et lavt differentieret tumor så som småcellet karcinom.



# Udredning

---

- CT-Scanning af urinvejene: normale forhold
- Cystoskopi: normale forhold
- 2 mdr. senere urin cytologi: normale celler

Er forandringerne i urinen overfortolket?