

Månedens case august 2013

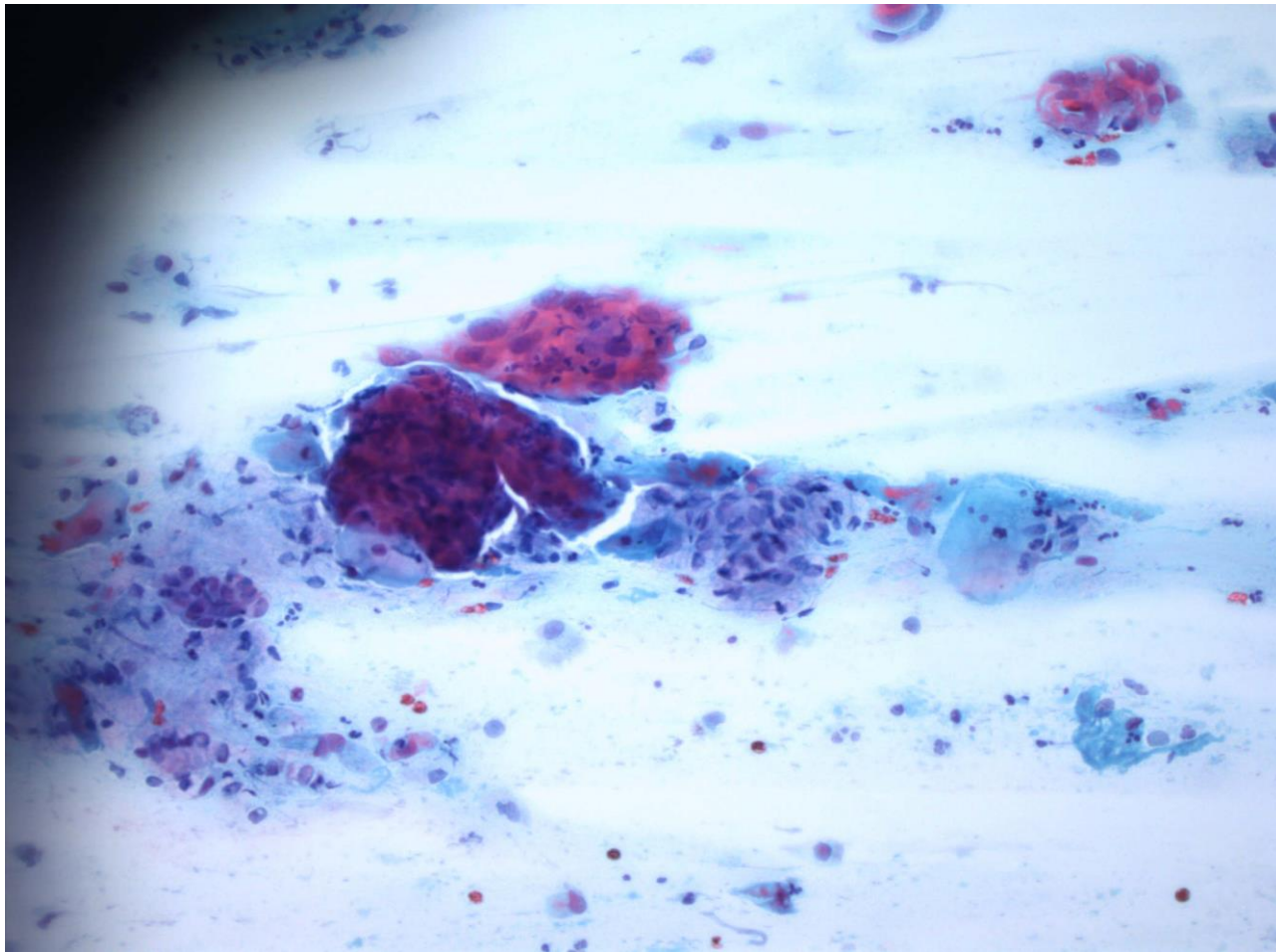
Smearprøve (UST)

44 årig kvinde koniseret med svær dysplasi (CIN3), frie rande for 7 år siden.

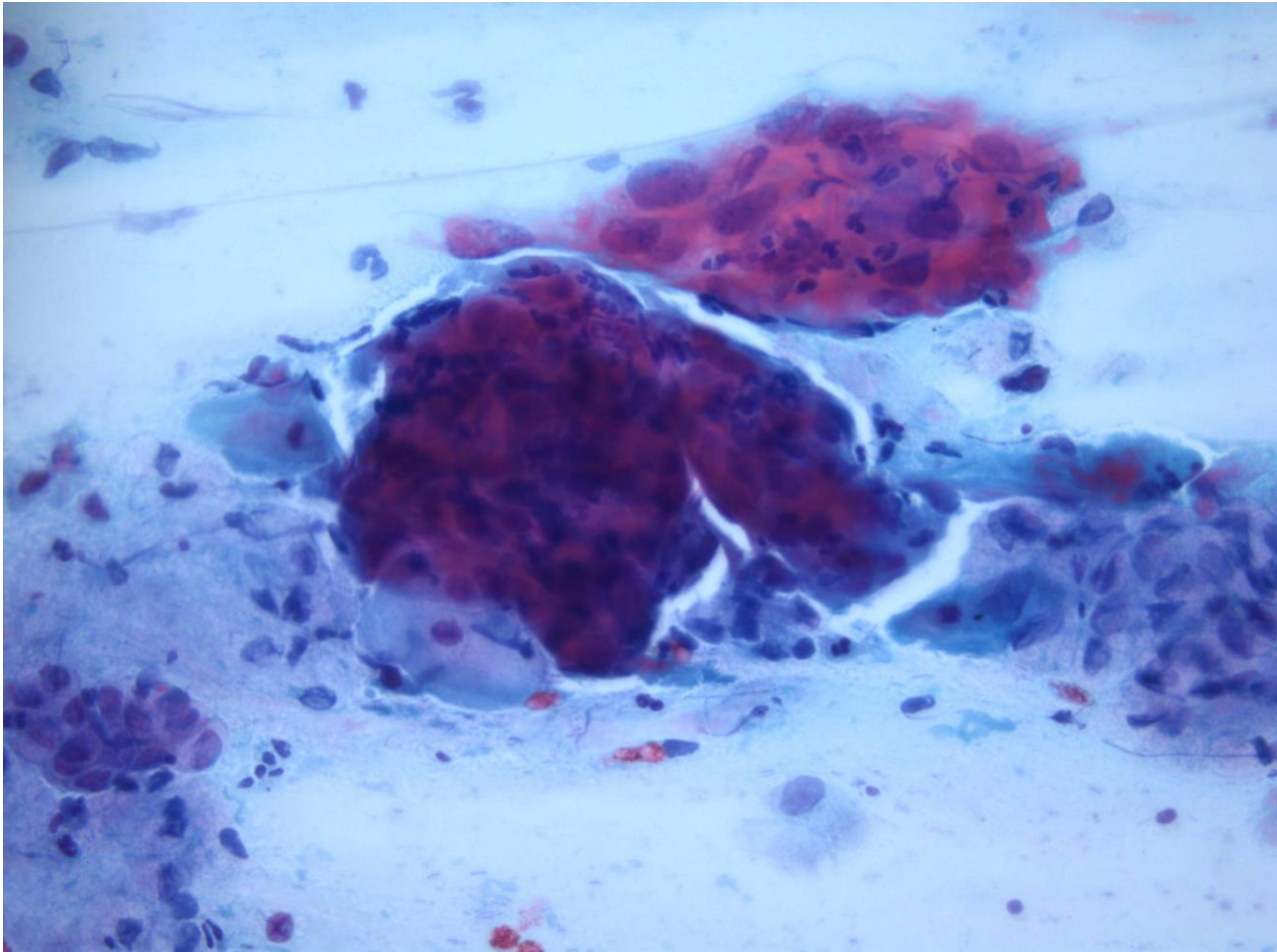
Efterfølgende kontroller normale fund, dog ASCUS i smear for 2 år siden, men histologi follow op viste normalt cervixvæv.

Nu nyt kontrol smear, se efterfølgende

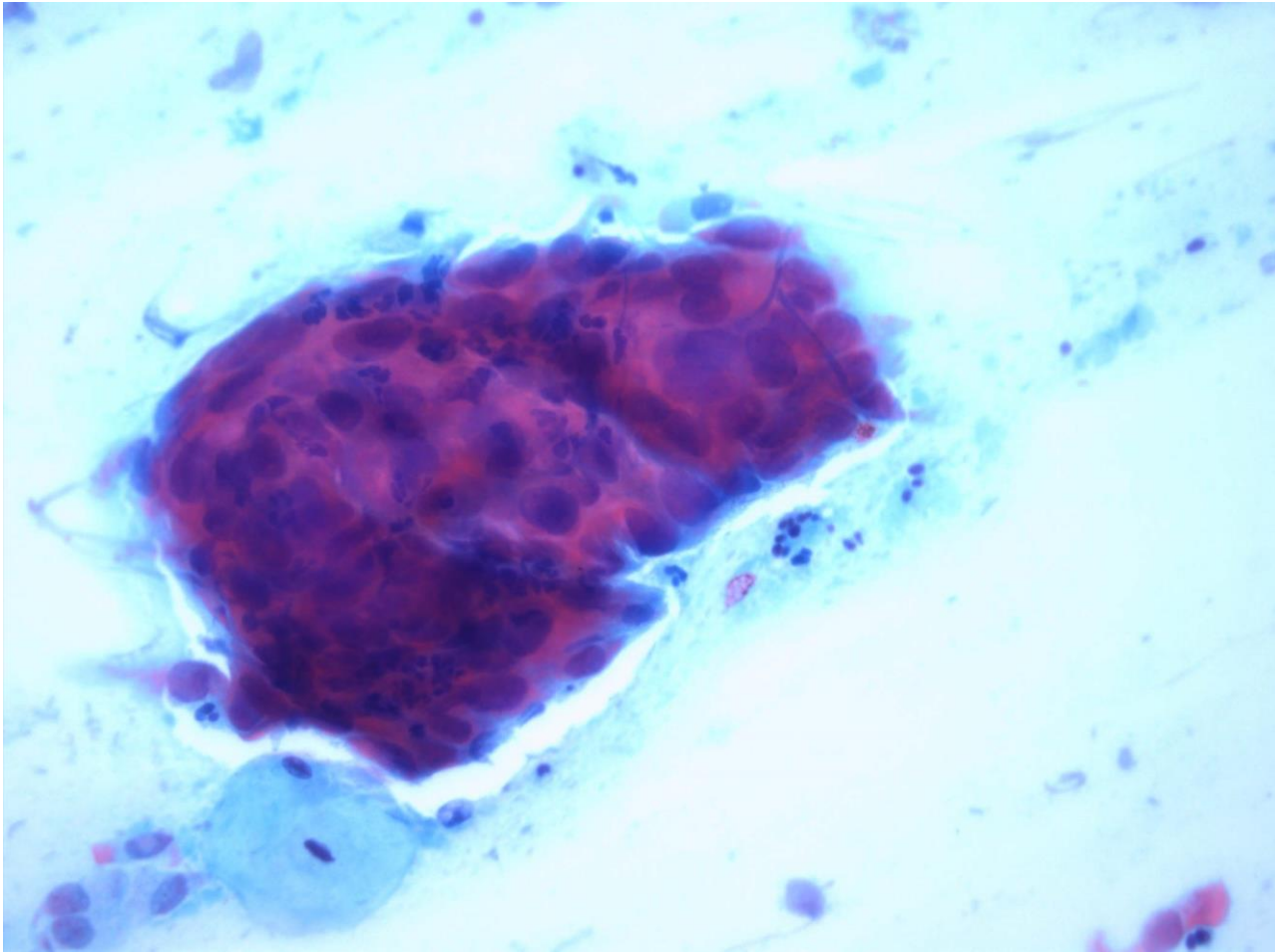
Kontrollsmear (UST)



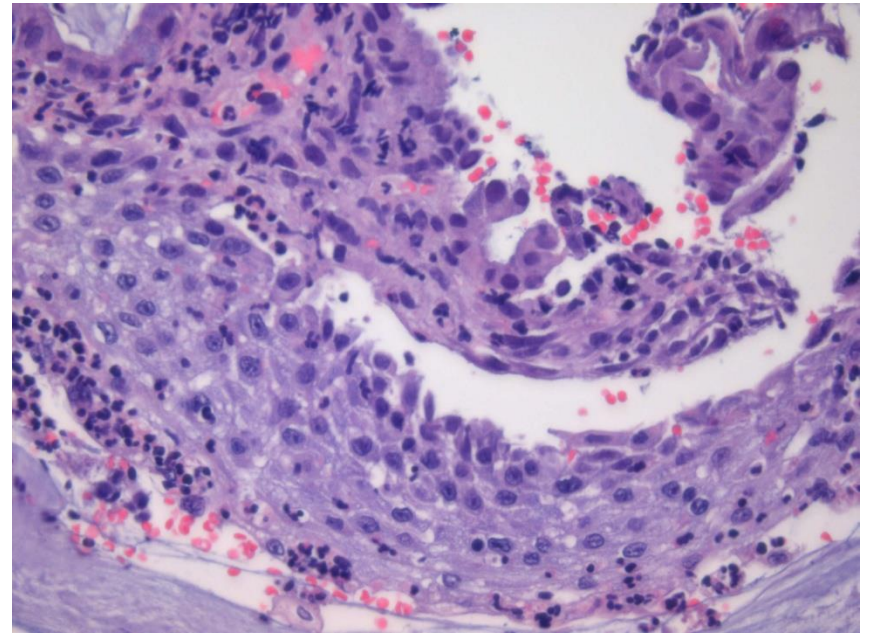
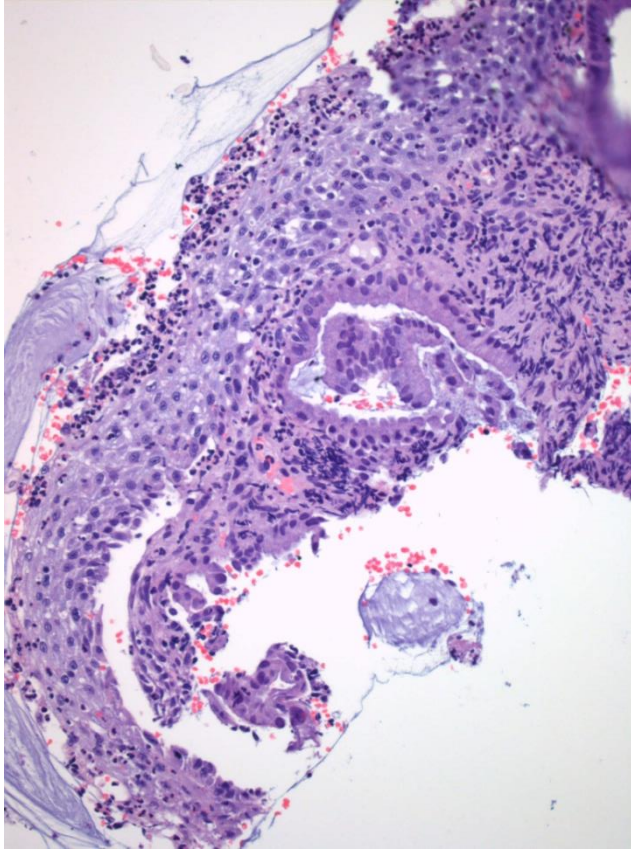
Kontrollsmear (UST)



Kontrolmeiar (UST)

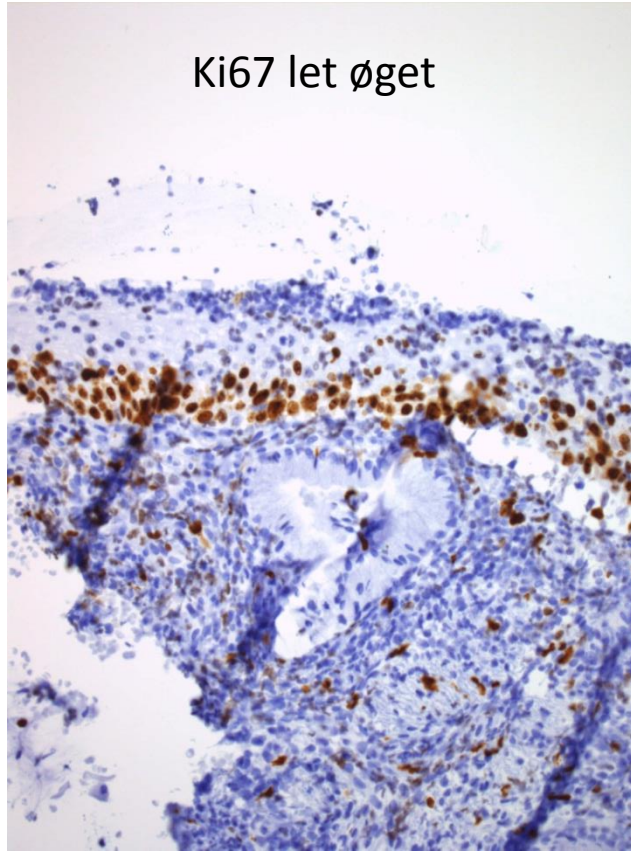


Portiobiopsi

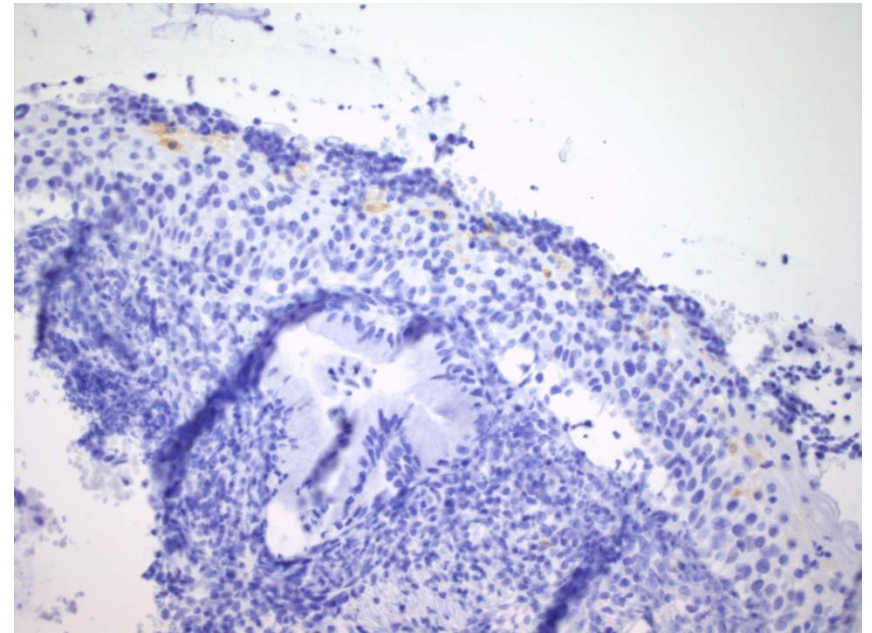


Portiobiopsi, immunhistokemi

Ki67 let øget



P16 negativ



Diagnose?

Smear blev besvaret med ASCH

Portiobiopsier med reaktive forandringer, er efterfølgende
hysterektomeret uden dysplasifund

Case diagnose: Smear med autolyserede cellegrupper, reaktive
forandringer, mest sandsynligt