

Netcase til årsmøde 2013

Pleuravæske/pericardievæske

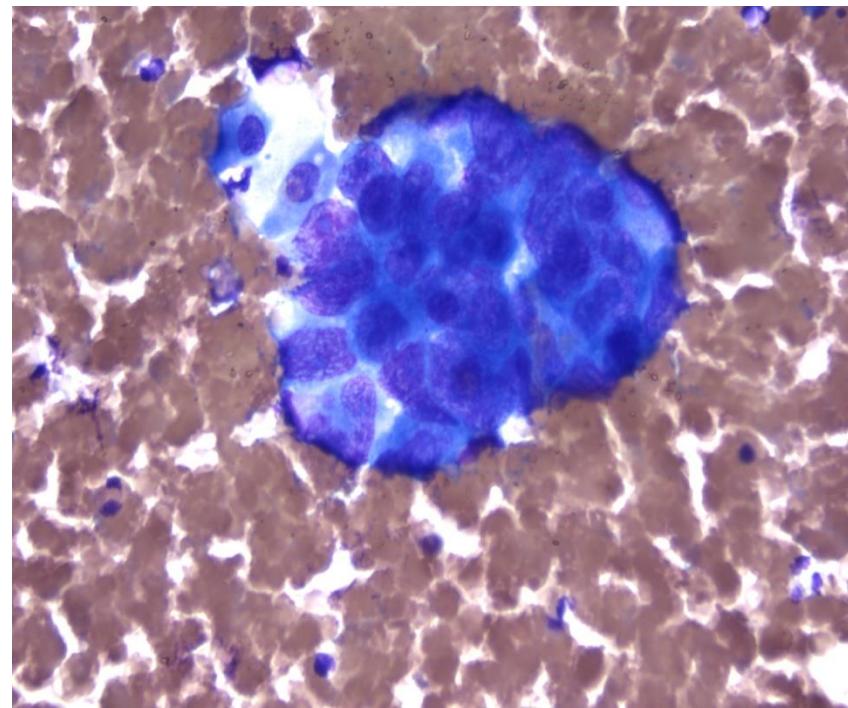
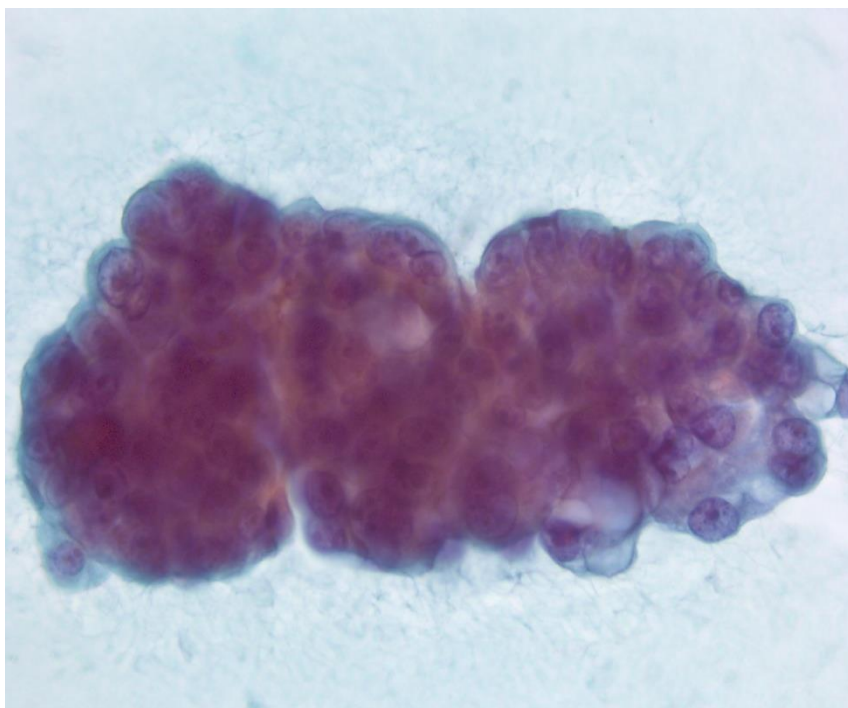
AALBORG UNIVERSITETSHOSPITAL



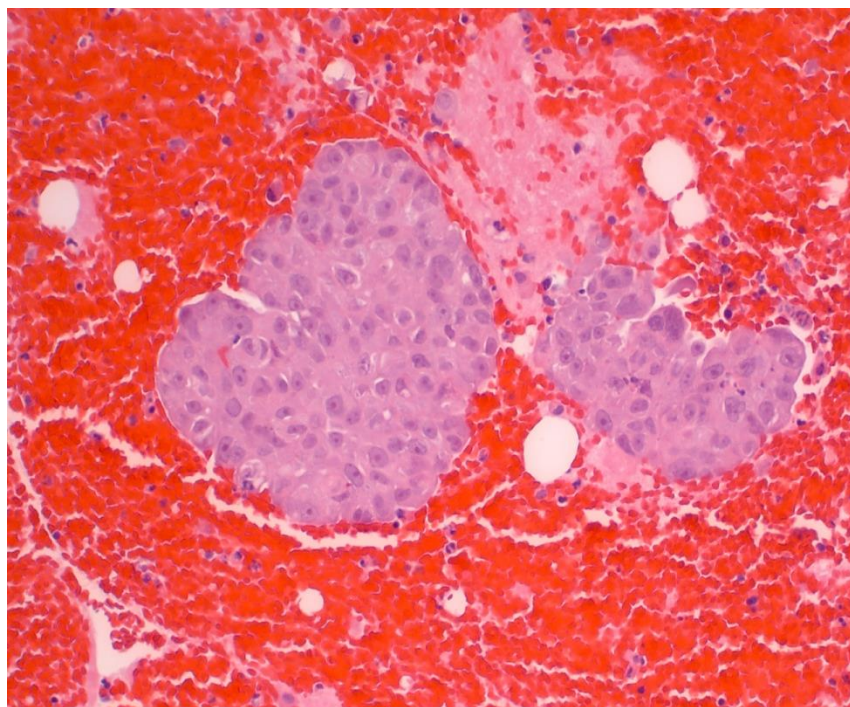
Pleuravæske/pericardie væske

- 66 årig kvinde
- 2008 opereret for cancer mammae (duktalt), fjernede lymfeknuder uden metastaser.
- 15.01.2013: Nu høje levertal og pericardievæske og pleuravæske af ukendt genese

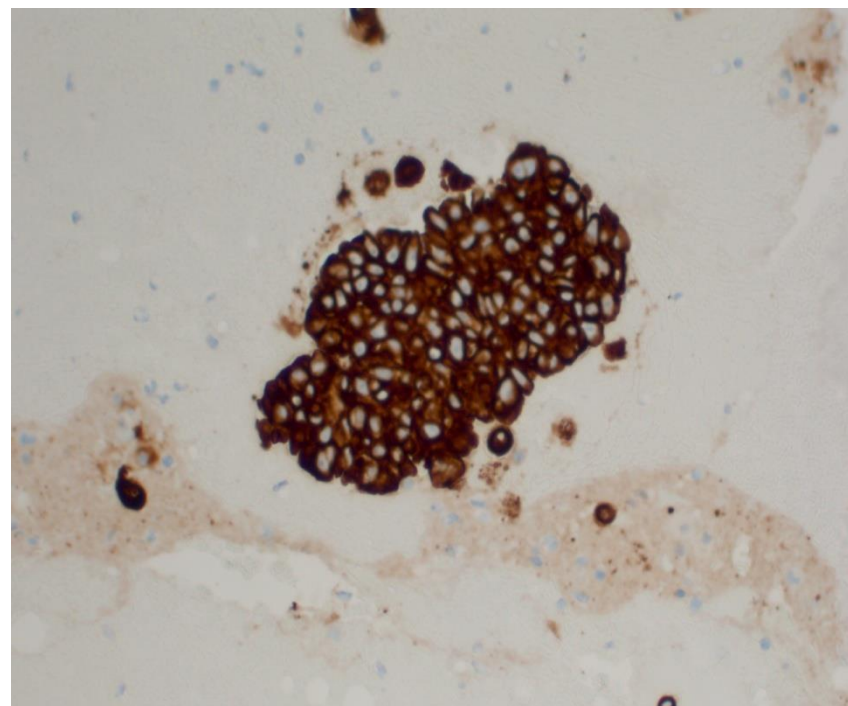
Pleuravæske/pericardievæske



Bundfaldskoagel



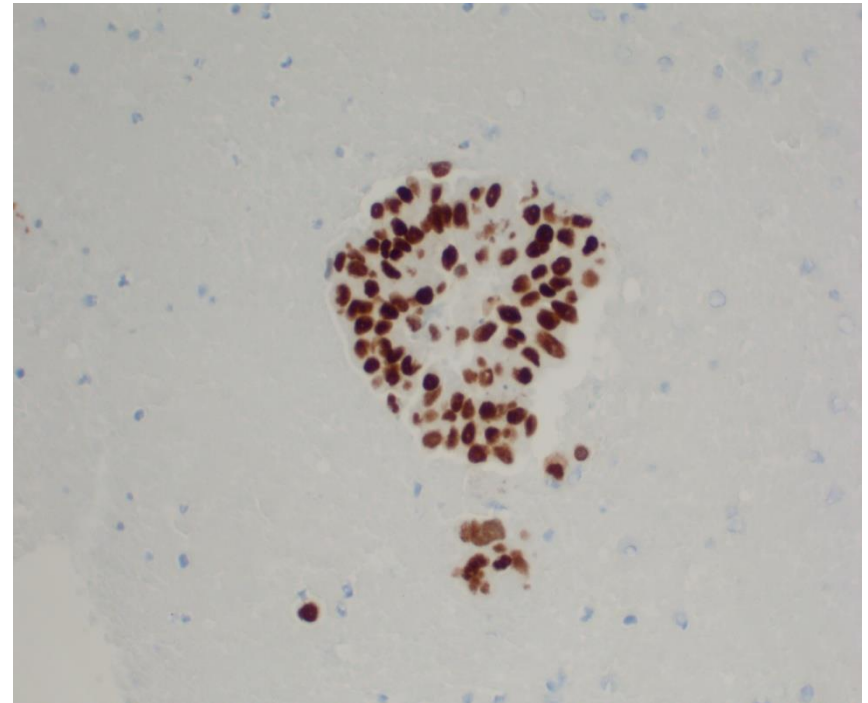
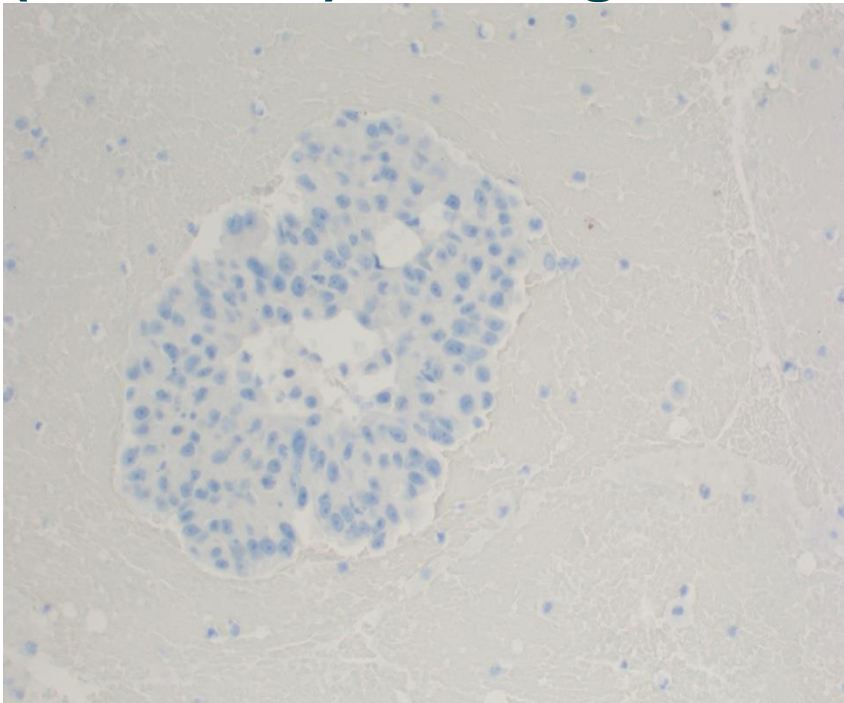
CK 7



Bundfaldskoagel

CK20, Østrogenreceptor, mammaglobin og gross cystic disease fluid protein (GCDFP15), alle negative

TTF1



Immunprofil både på bundfald og histologi

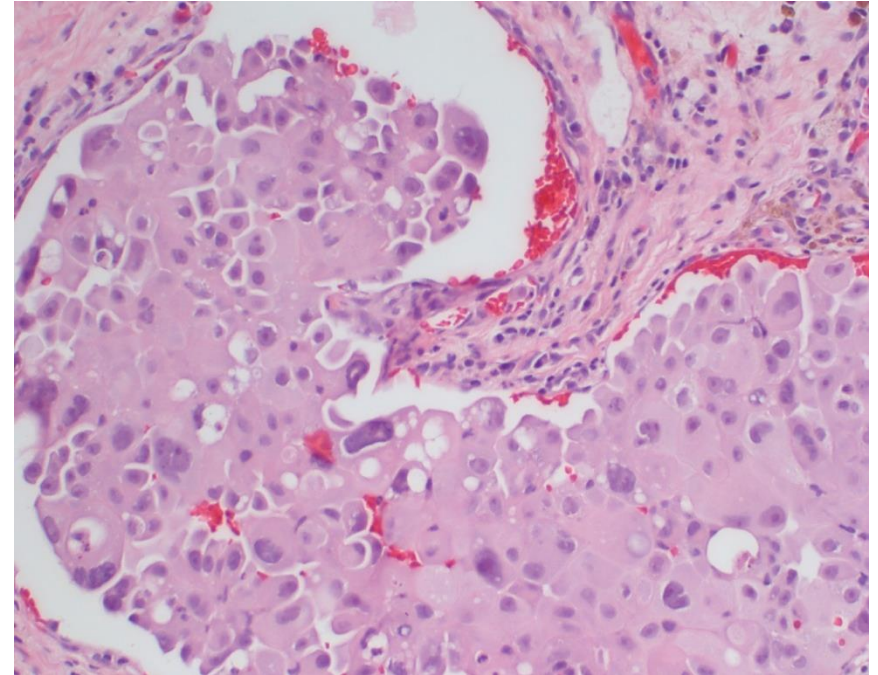
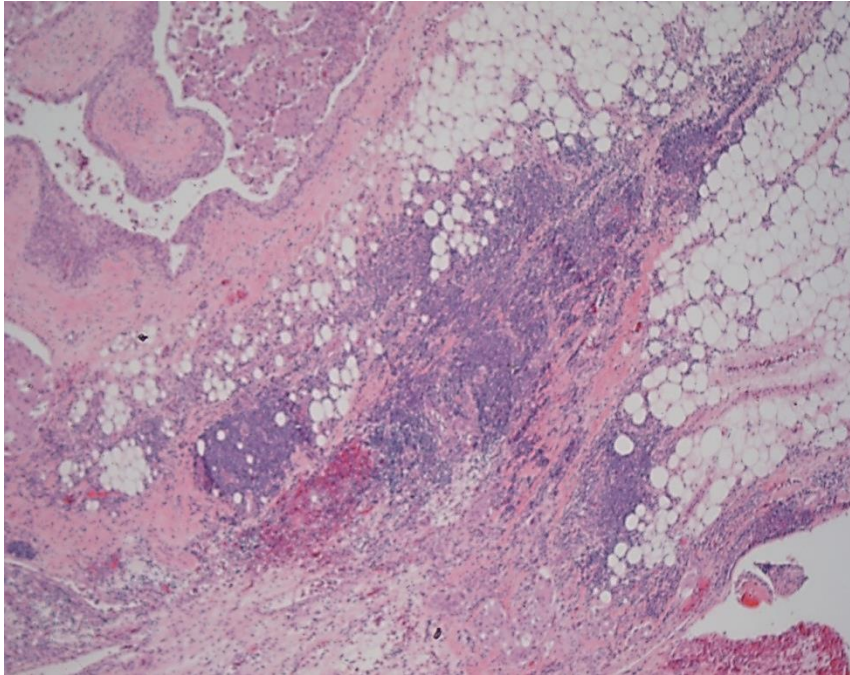
CK20-, Østrogenreceptor-, Mammaglobin-, Gross cystic disease fluid protein (GCDFP15)-

CK7+ og TTF1+

Diagnose: Metastase fra mamma karcinom?

Metastase fra ny primær tumor?

Bløddelsvæv over aorta



Immunprofil: som i pleura/pericardie væsken:

CK20-, Østrogenreceptor-, Mammaglobin-, Gross cystic disease fluid protein (GCDFP15)-,

CK7+, og TTF1+. samt EGFR-

Ny primær lungetumor med tegn på spredning