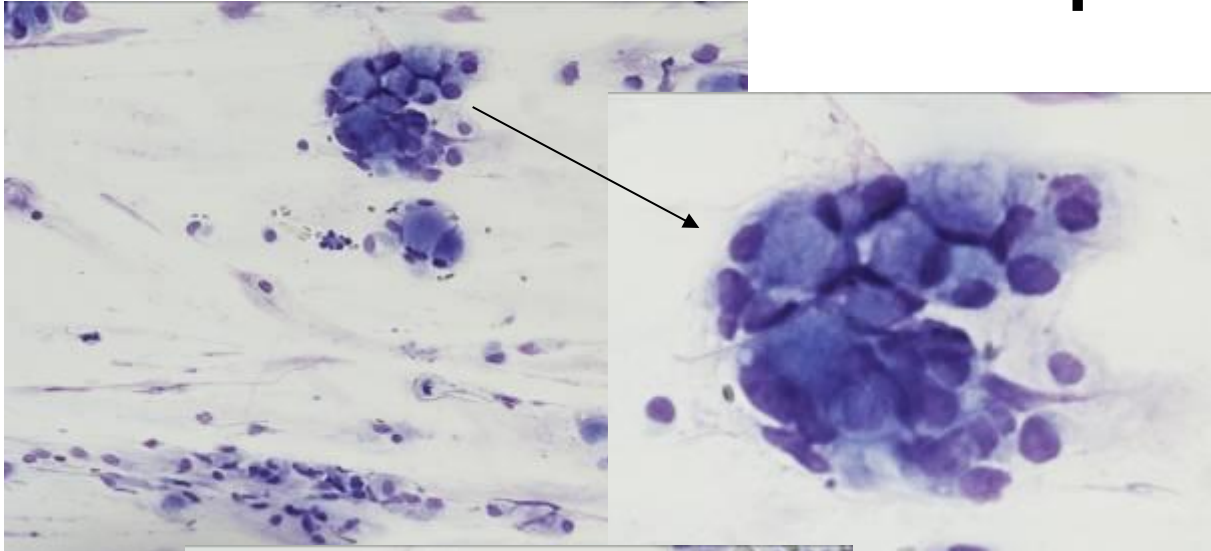


Netcase 6

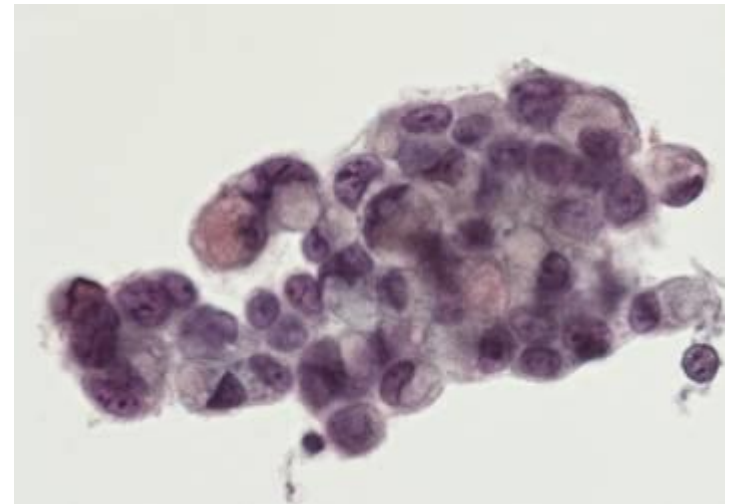
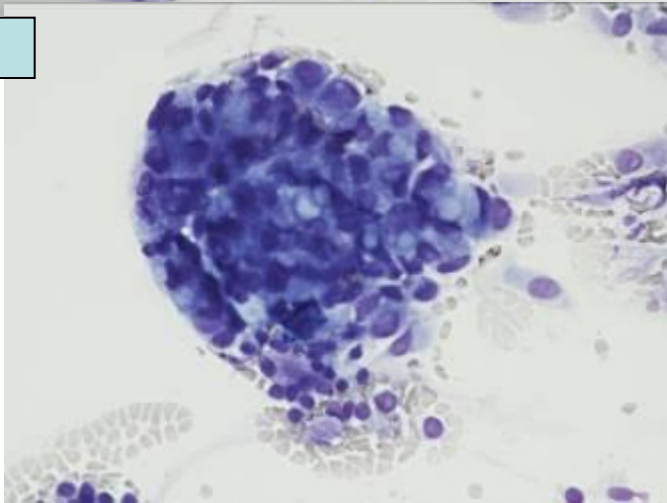
Mand 33 år

Børstebiopsi og
broncials skyllevæske

børstebiopsi

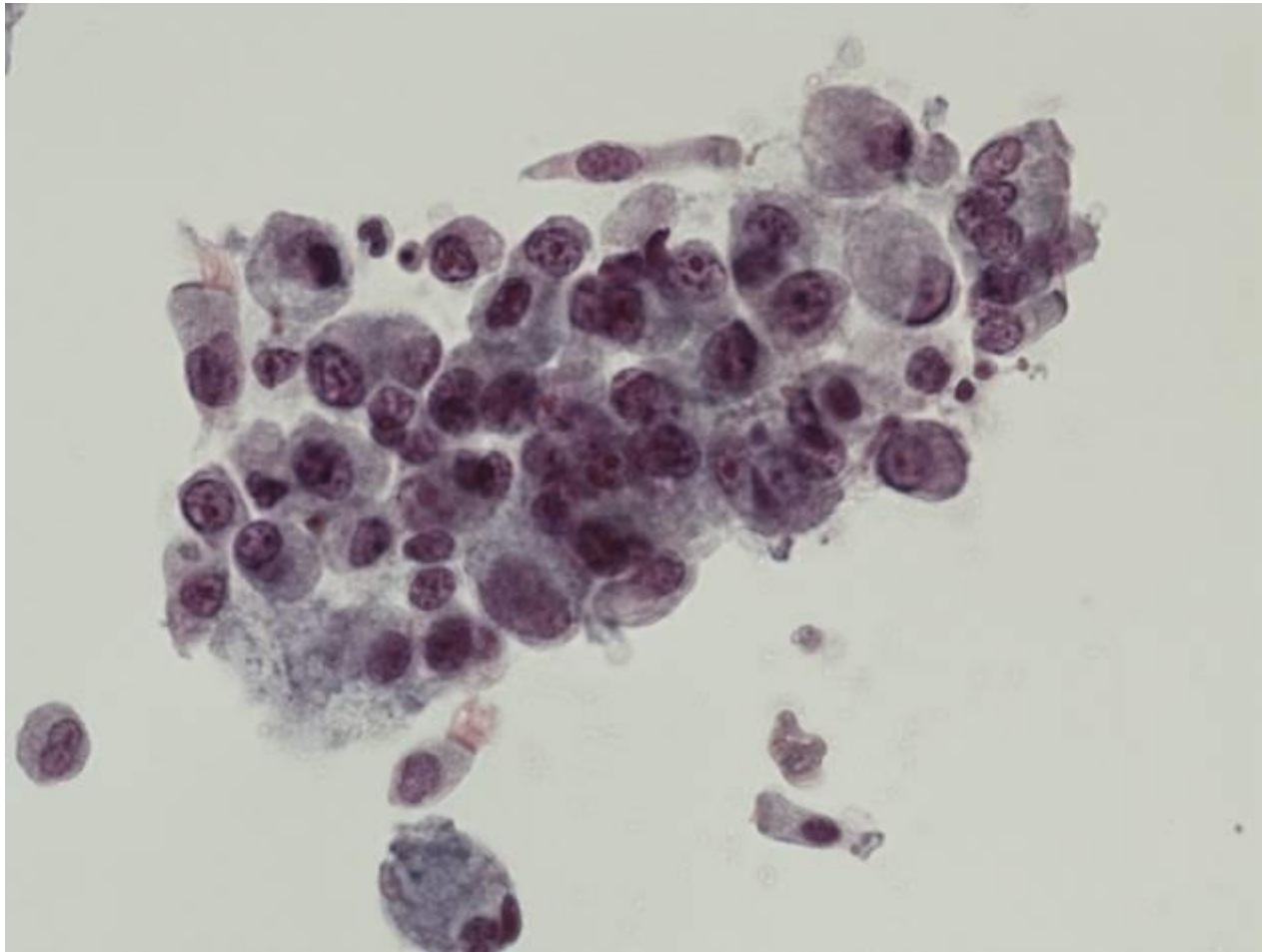


MGG

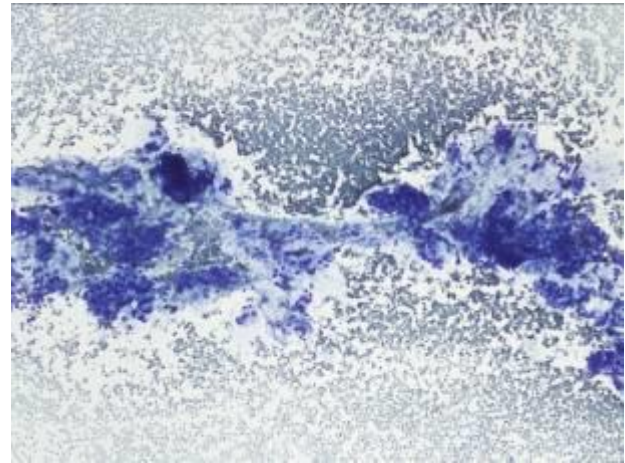
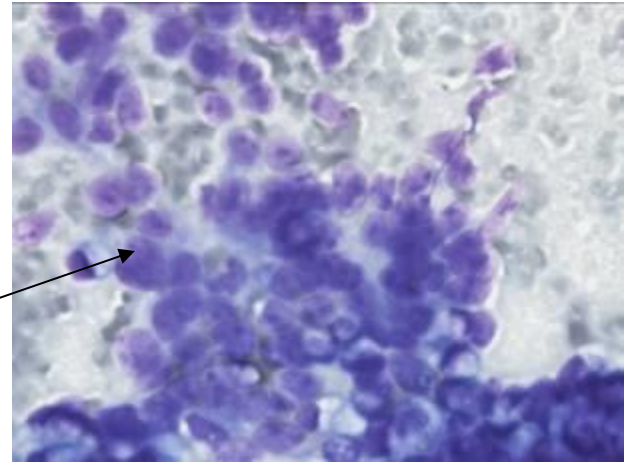
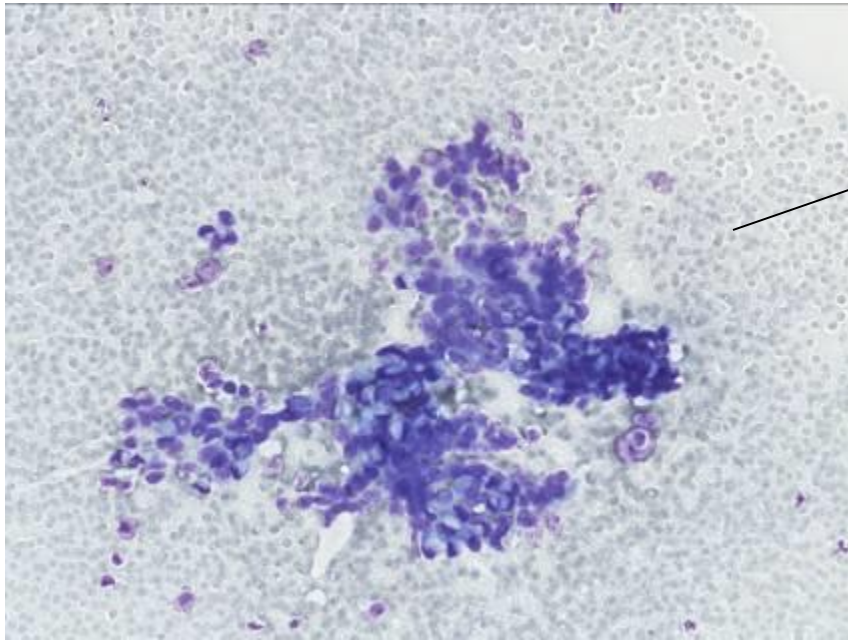


PAP

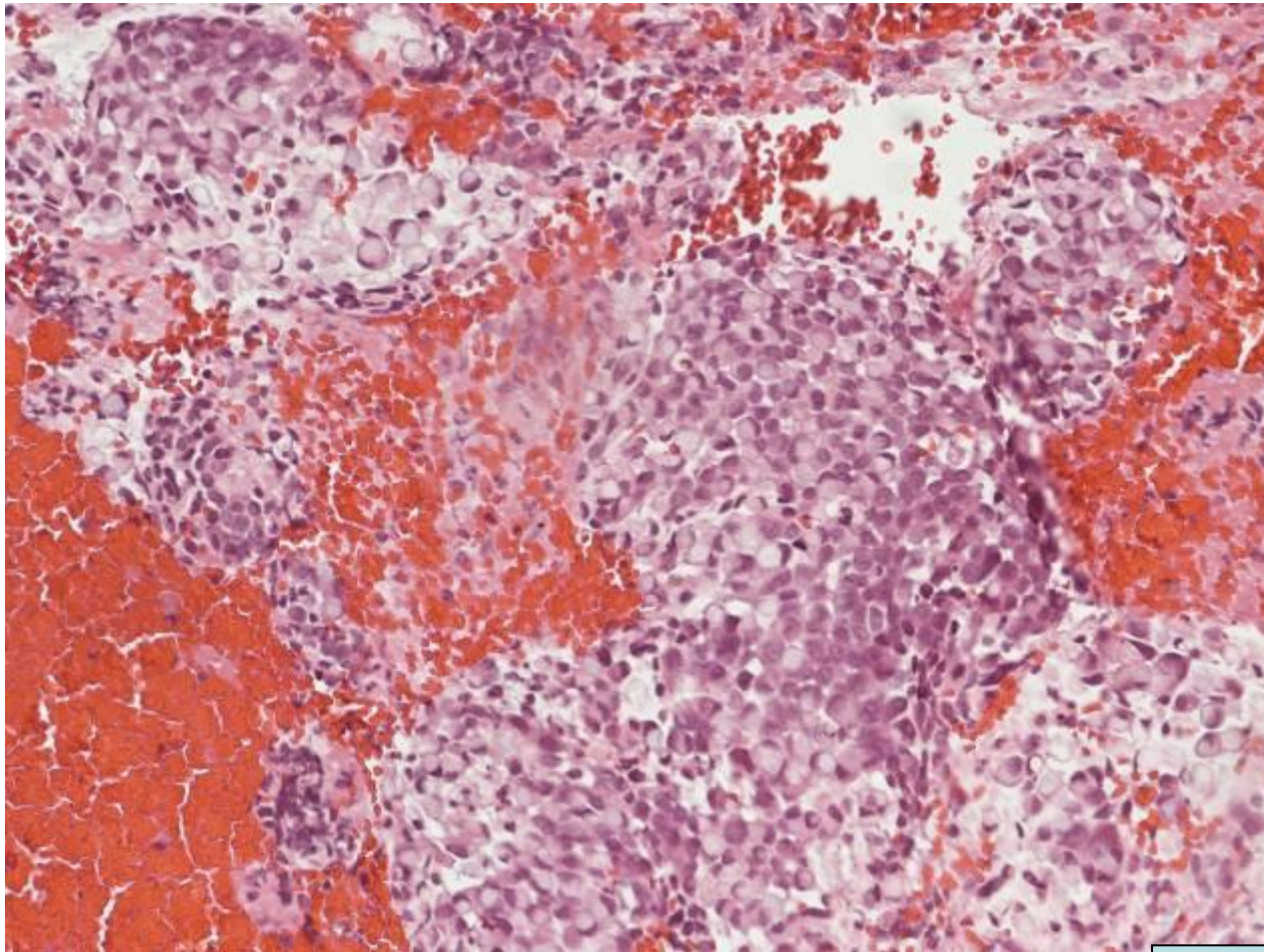
broncialskylløvæske



EBUS st 7

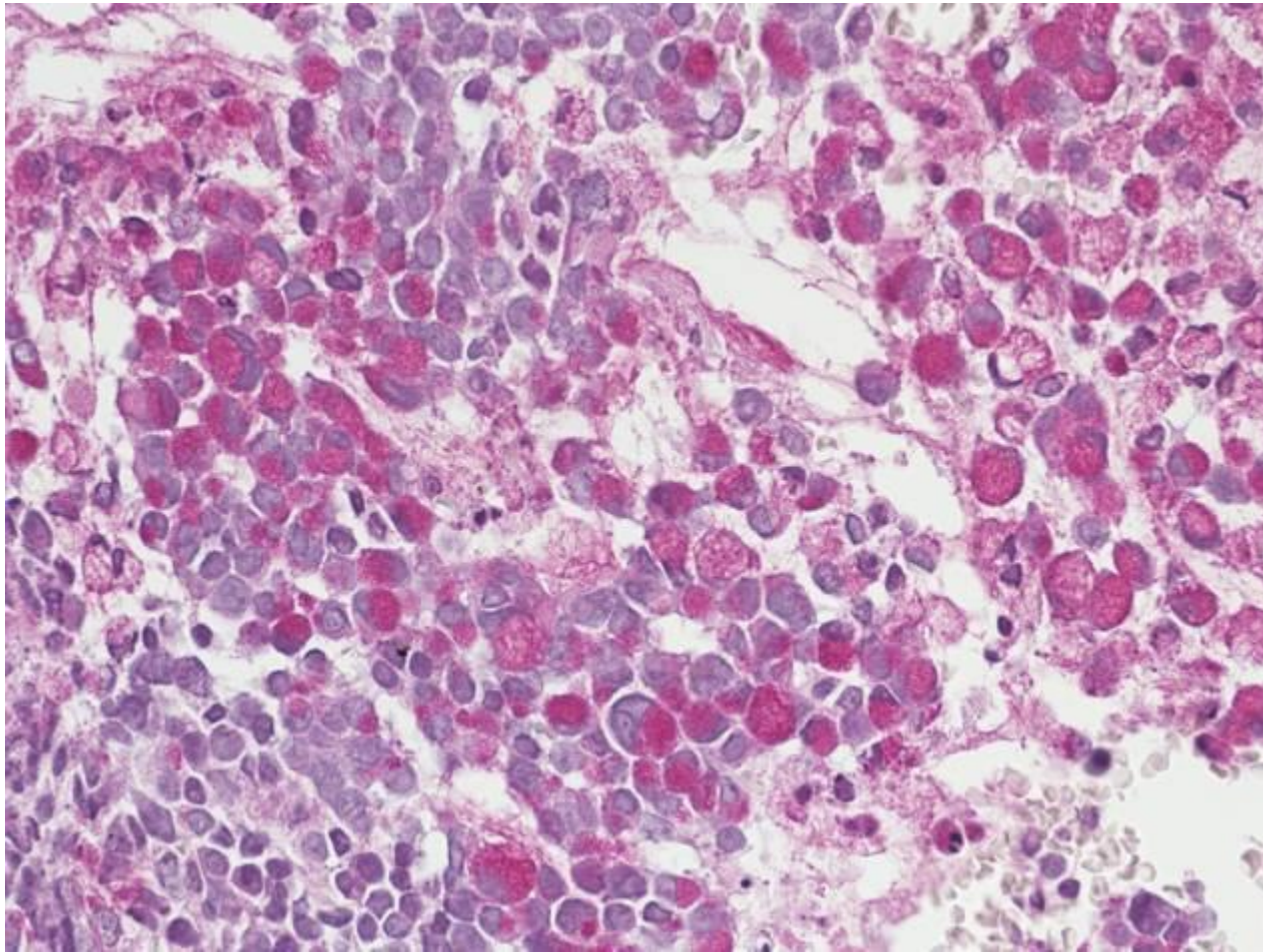


EBUS station 7 PT-koagel



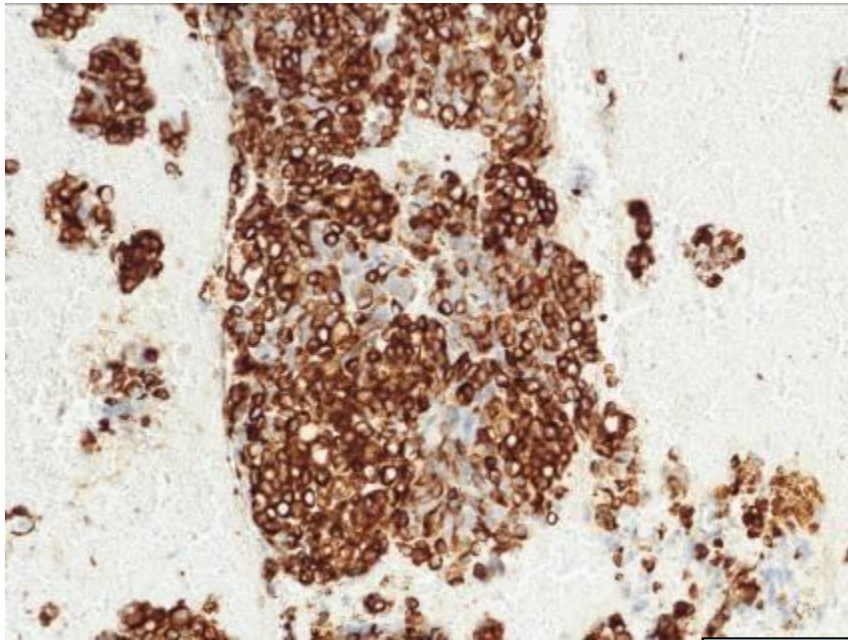
HE

EBUS station 7 PT-koagel

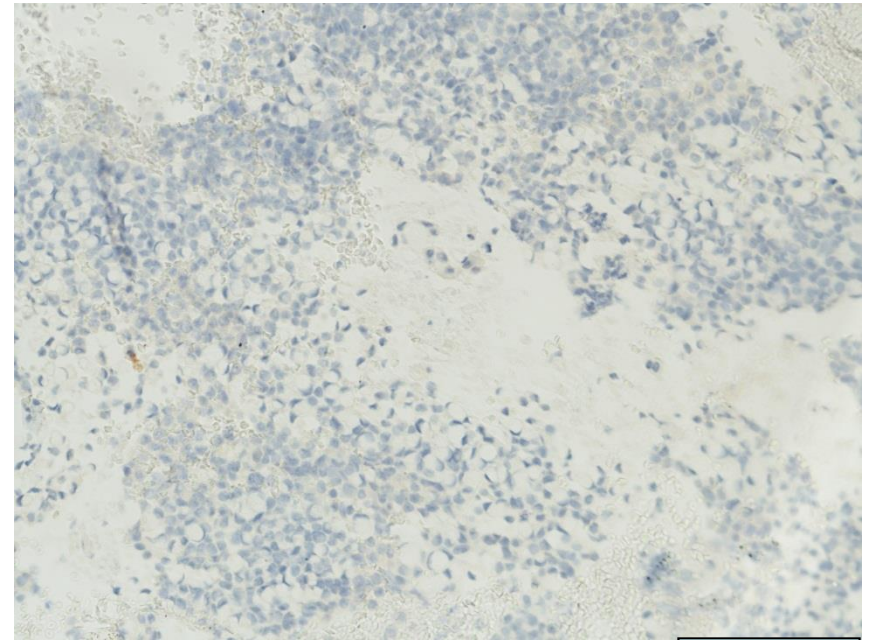


PAS

EBUS station 7 PT-koagel



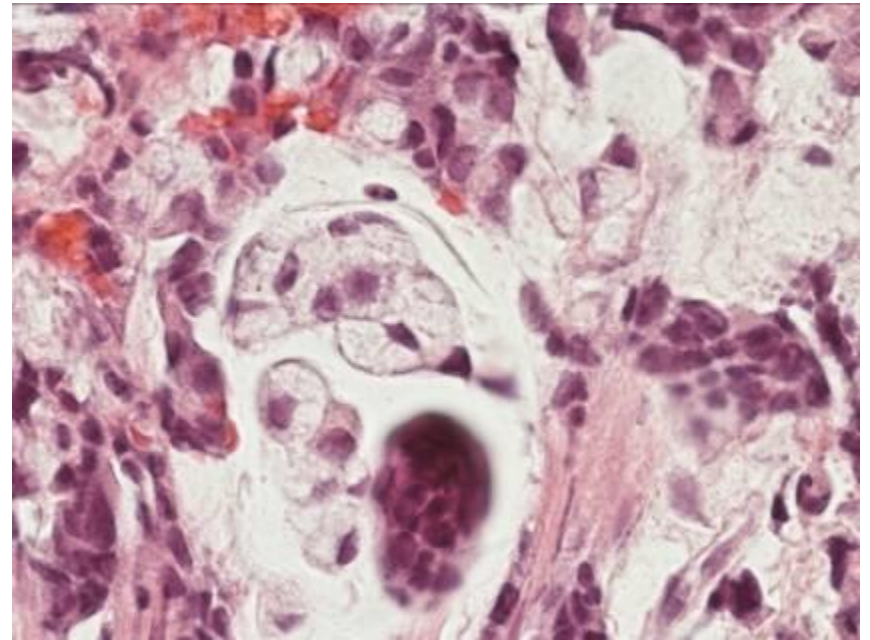
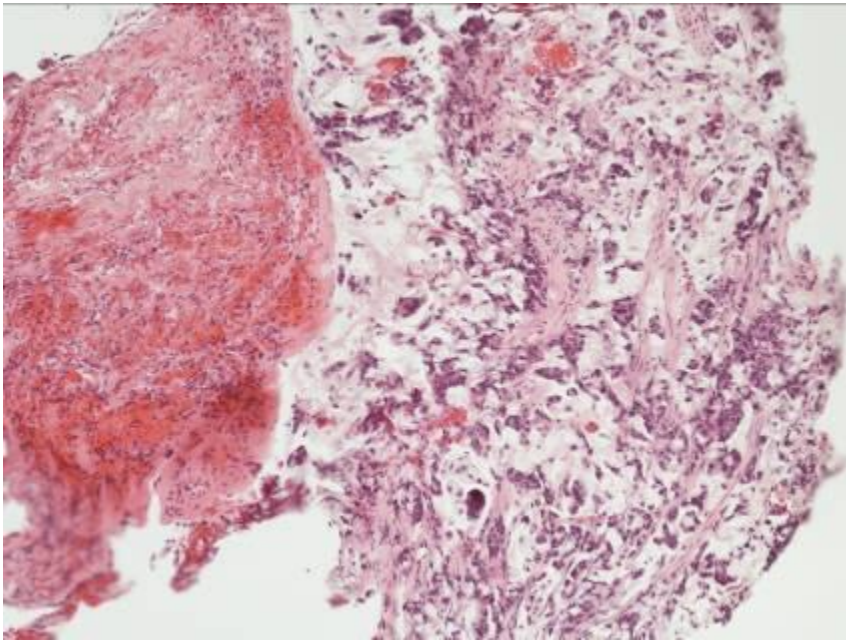
CK20



TTF1

CK 7 fokalt positiv

Biopsi lunge



Kliniske oplysninger

- 2009 cancer ventikuli
- 2013 PET pos CK i hø hilus
- Synlig tumor i hø overlap

Diagnose

- Børstebiopsi og bronchial skyllevæske:
Malignitetssuspekterede celler
- Lungebiopsi: Udbredt infiltration af adenokarcinom.
Udseendet fuldt foreneligt med at repræsentere metastase fra cancer ventriculi.
- EBUS: Fokalt ses en del signetringsceller og immun
cytologien er således foreneligt med at repræsentere
metastase fra cancer ventriculi.