

Netcase 1

OUH

Gennemgang

Nov.2010

Diagnose:

ASCUS

Cytologisk kontrol om 6 mdr.

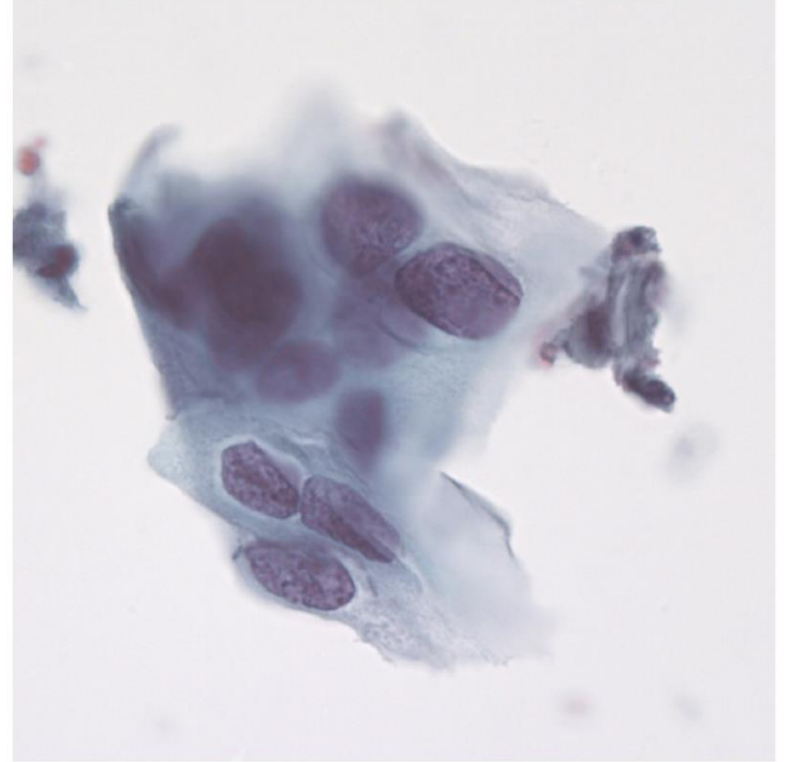
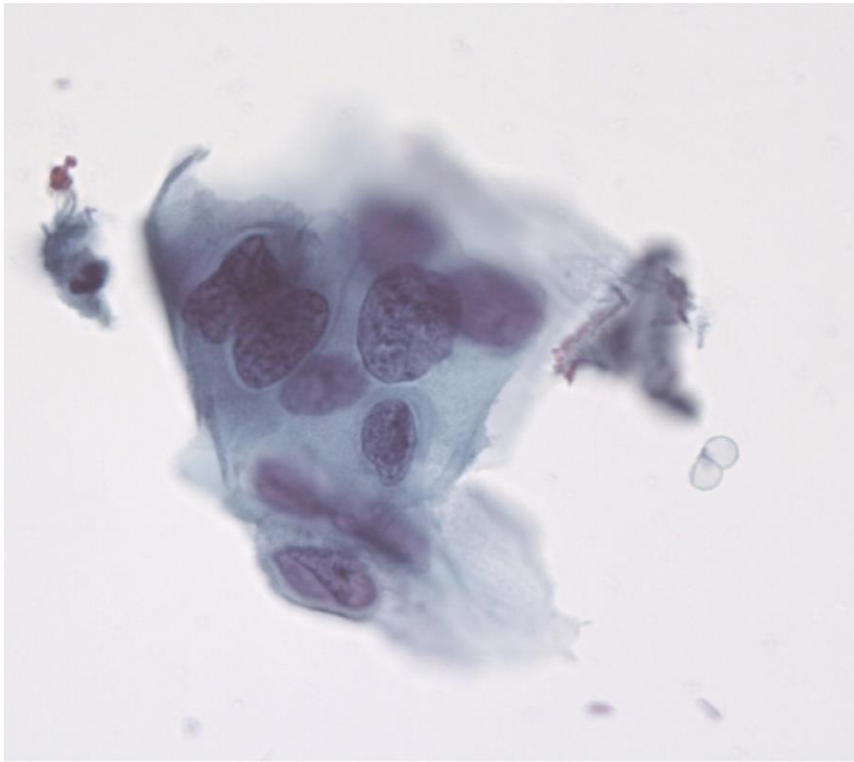
- Pladeepitelsatypi
- Kerneforstørrelse: 2½-3 x intermediær cellekerne
- Let øget K/C ratio
- Minimal hyperkromasi
- Minimal irregularitet i kromatinfordelingen eller kernemembran
- Atypisk parakeratose med begrænsede kerneforandringer

ASC-US

Atypical Squamous Cells of Undetermined Significance

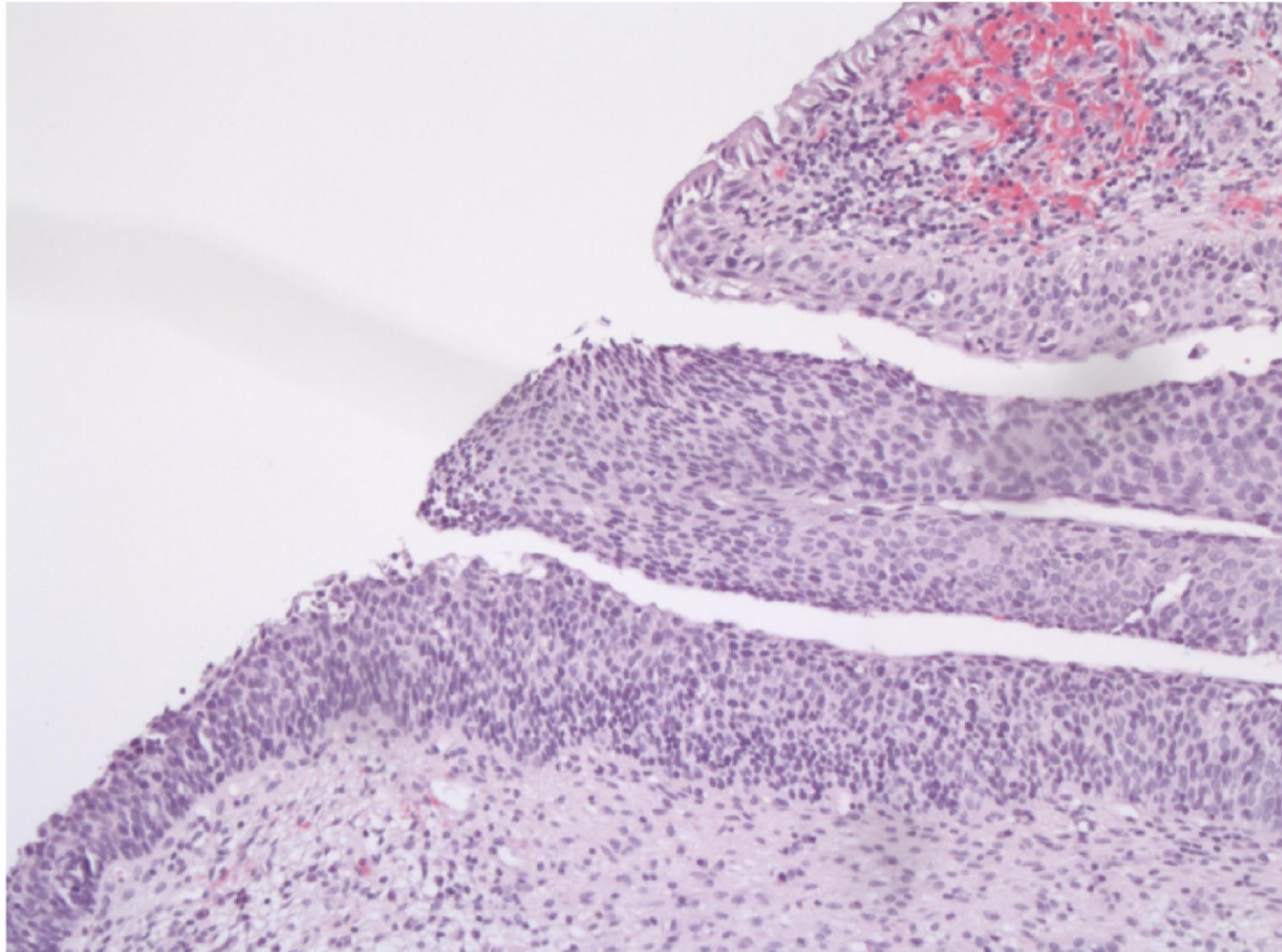
Atypiske pladeepitelforandringer af ukendt betydning

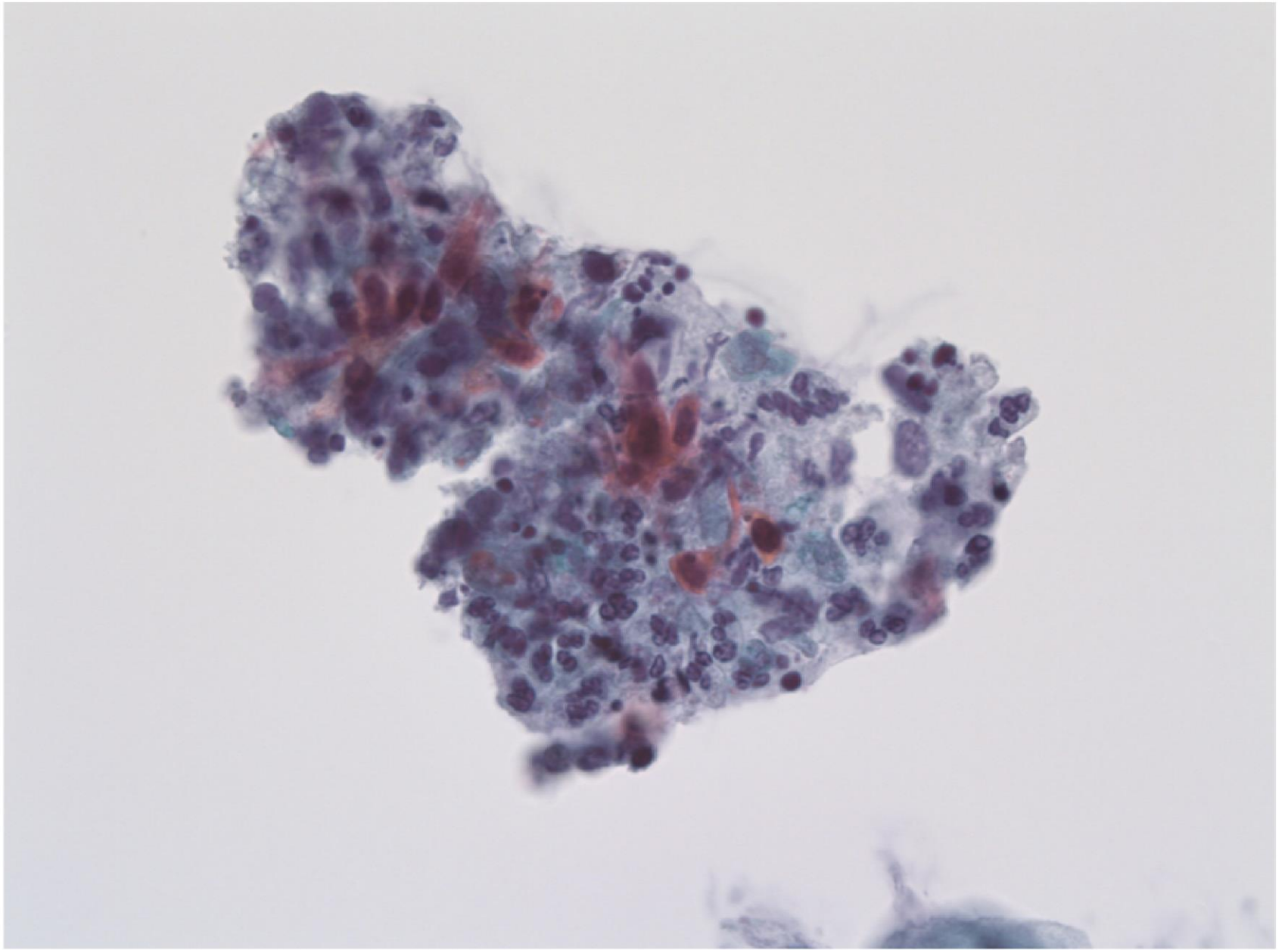
Kontrolprøve juni 2011



Nov. 2011

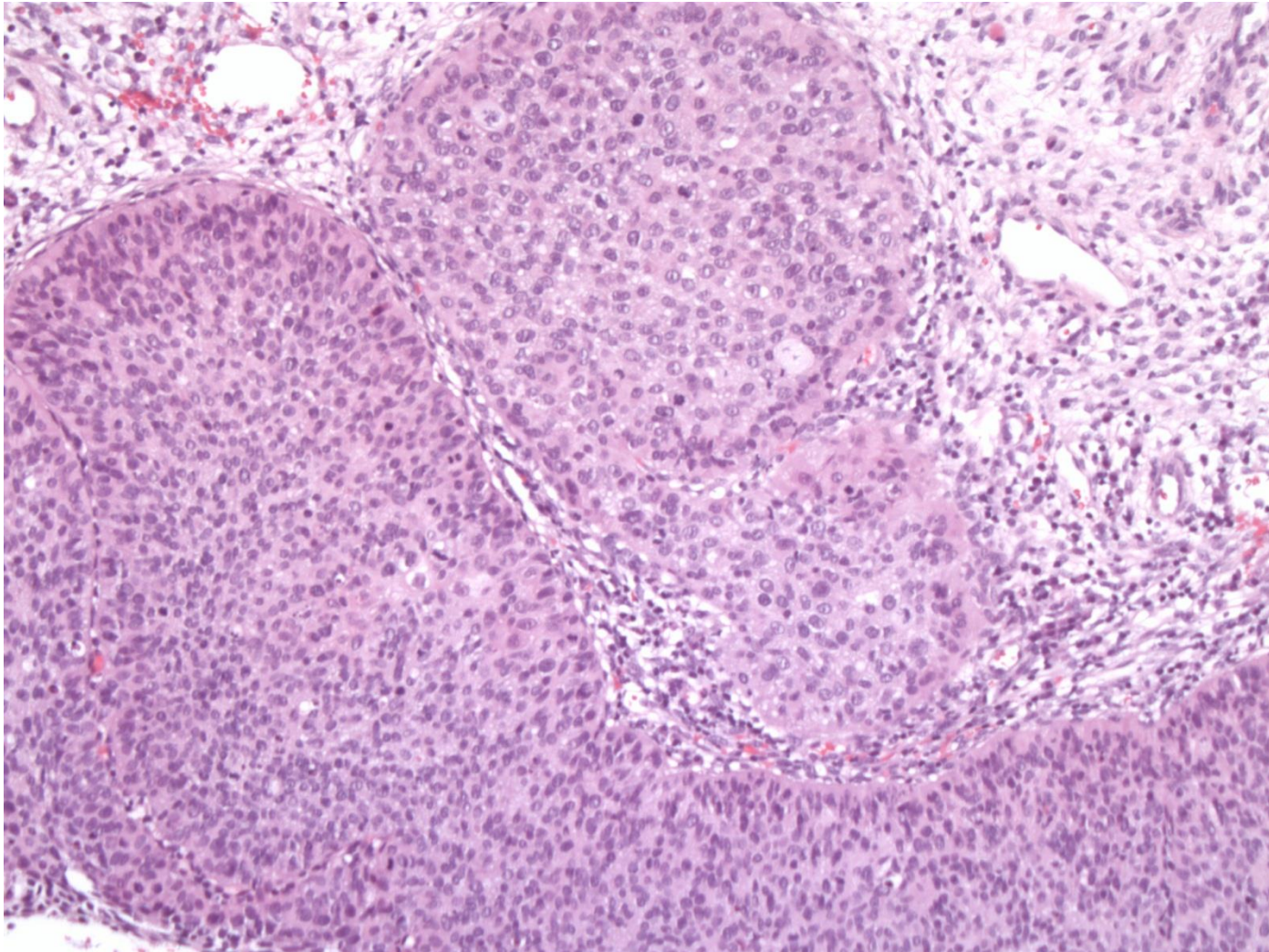
Portiobiopsier og endocervikal børste





Januar 2012

Konus



Opfølgning

- Feb.2012
Rekonus
CIN2 – frie rande
- Juni 2012
Kontrolcytologi
Normale celler
Humant papillomvirus ikke påvist (LA)