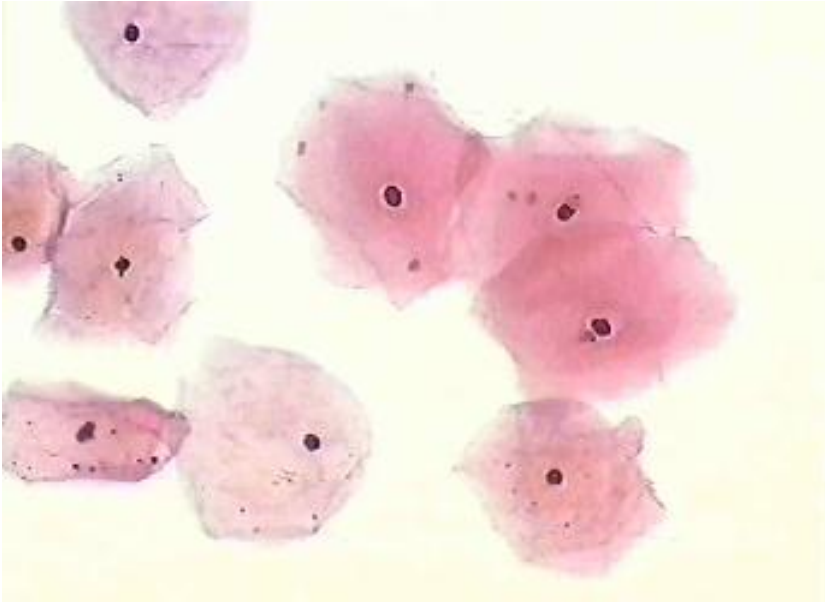


# 1



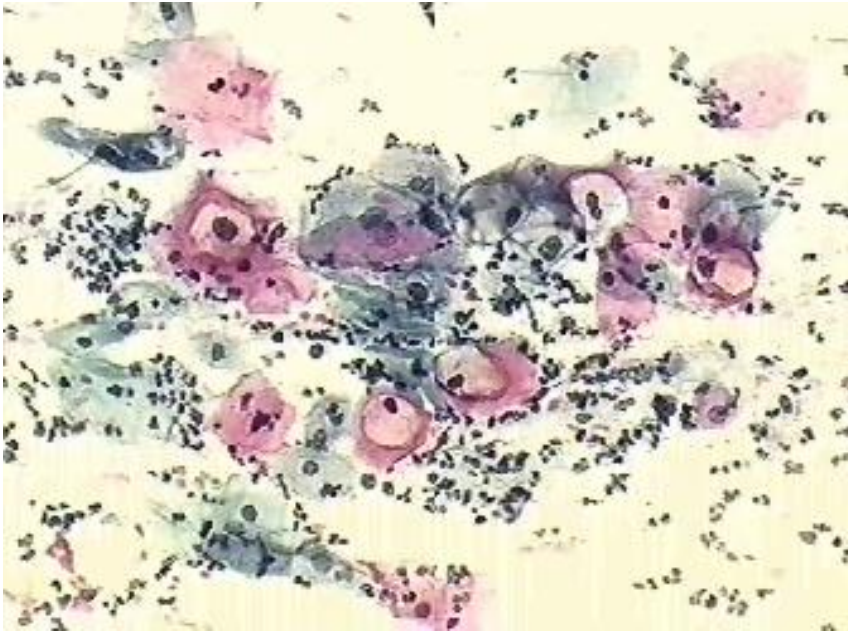
forstr. x 500

hormonstatus

- a. proliferationsfase
- b. ovulationstidspunkt
- c. sekretionsfase

# 2

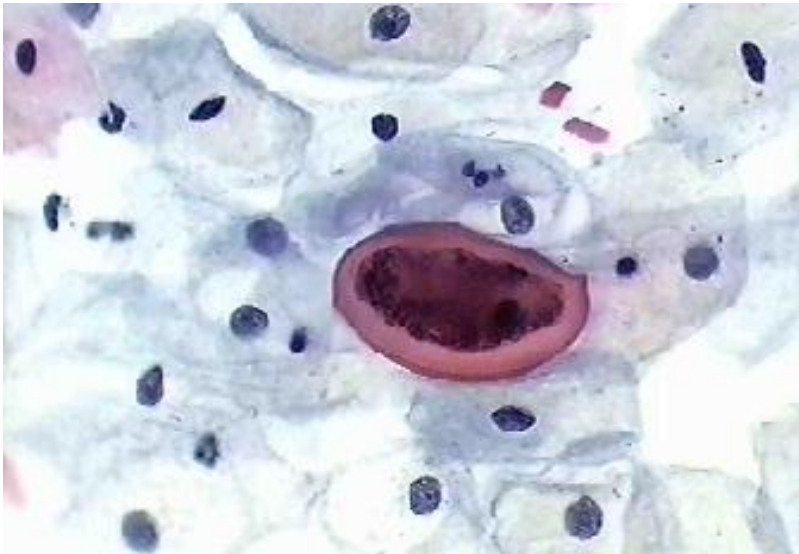
forstr. x 200



- a. LSIL med koilocytose
- b. glycogen
- c. inflammations betingede celleforandringer

# 3

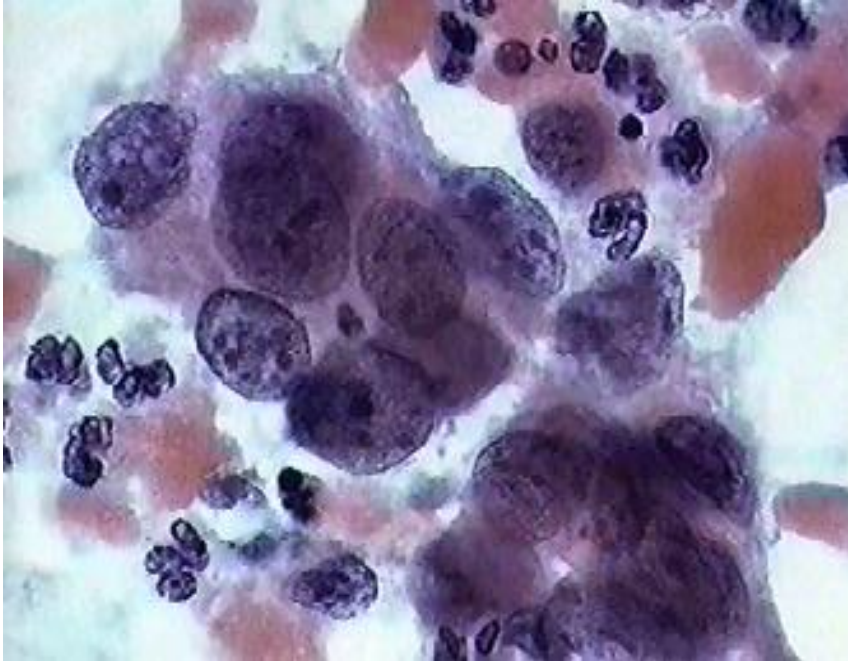
forstr. x 500



- a. pollen
- b. psammomlegeme
- c. Enterobius vermicularis

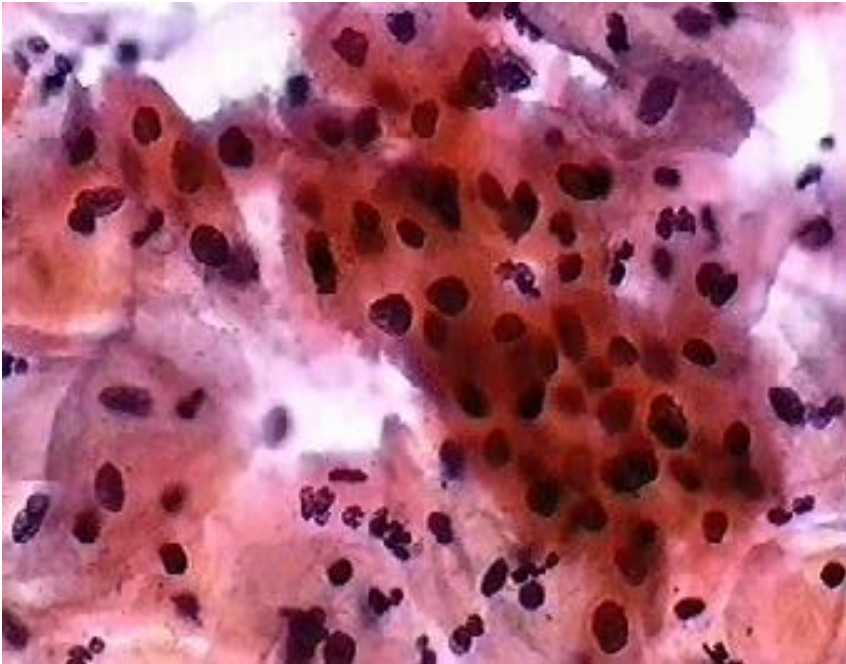
# 4

forstr. x 1000



- a. karyorhexis
- b. HSIL
- c. planocellulært  
karcinom

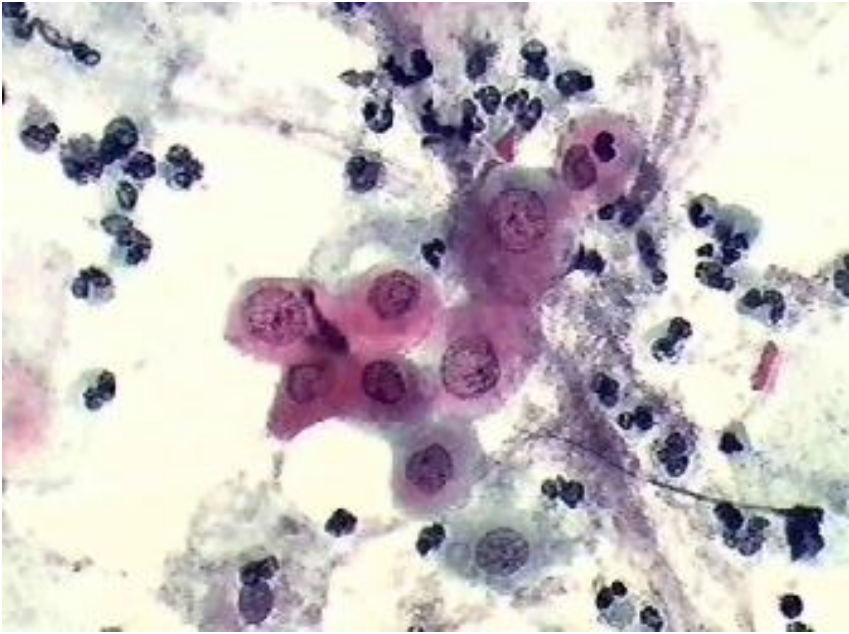
# 5



forstr. x 500

- a. pseudoparakeratose
- b. parakeratose
- c. dyskeratose

# 6

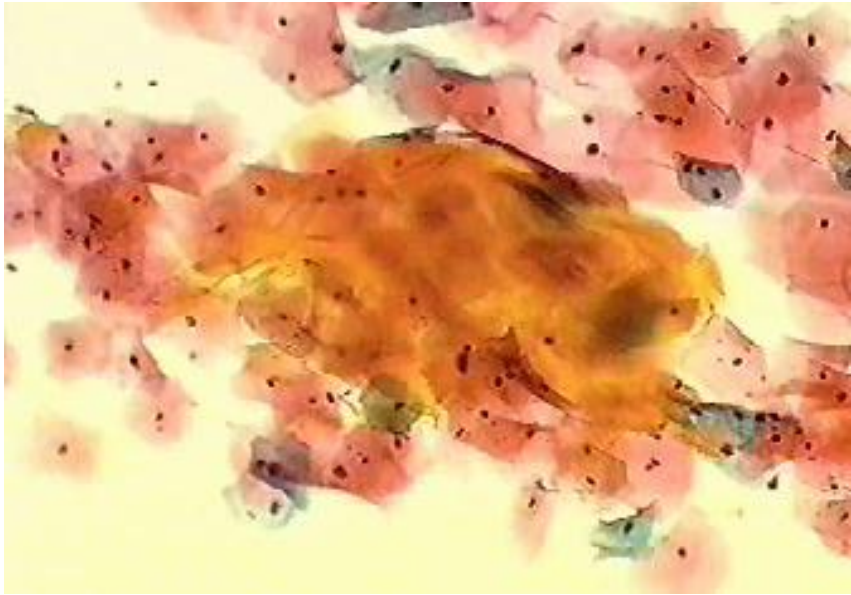


forstr. x 500

- a. inflammationsbetingede celleforandringer
- b. ASCUS
- c. LSIL



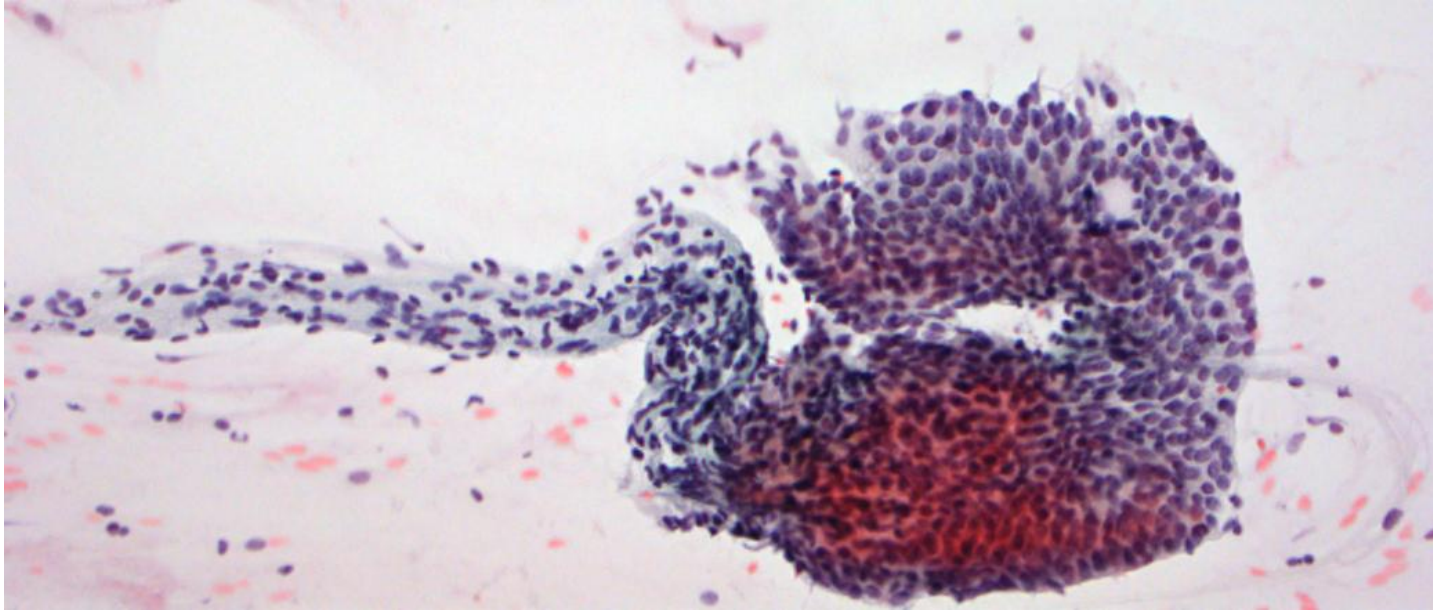
7



forstr. x 200

- a. erythrocytter
- b. parakeratose
- c. hyperkeratose

8



a. AIS

forstr. x 100

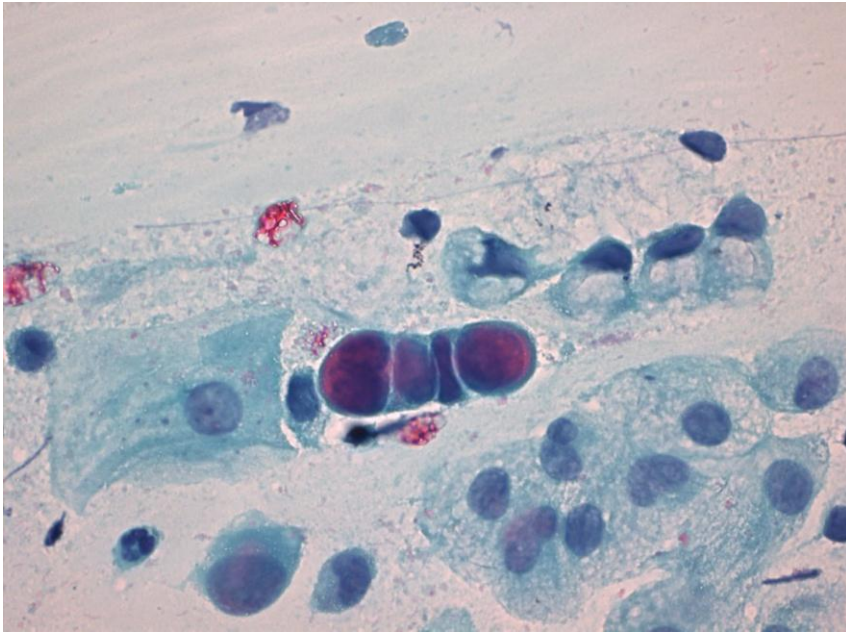
b. HSIL

c. LUS



# 9

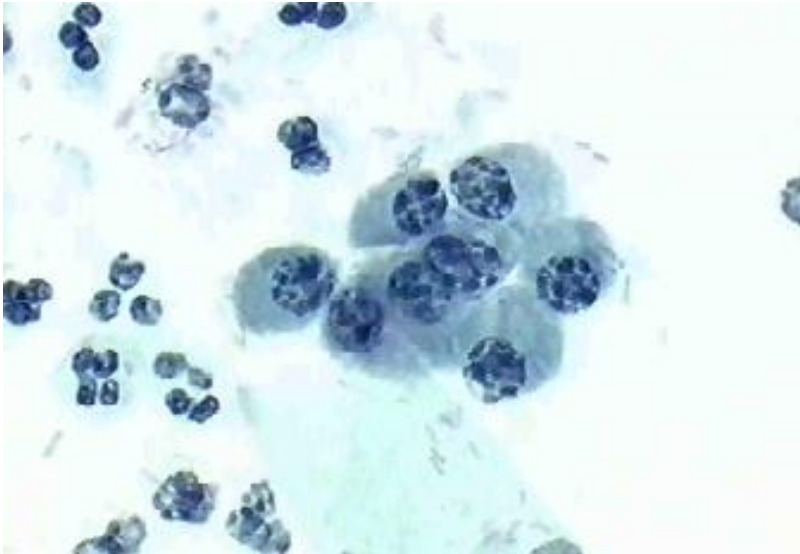
forstr. x 500



- a. Normal cylinderepitel
- b. Metastase fra lob. Mamma karcinom
- c. Reparativt cylinder

# 10

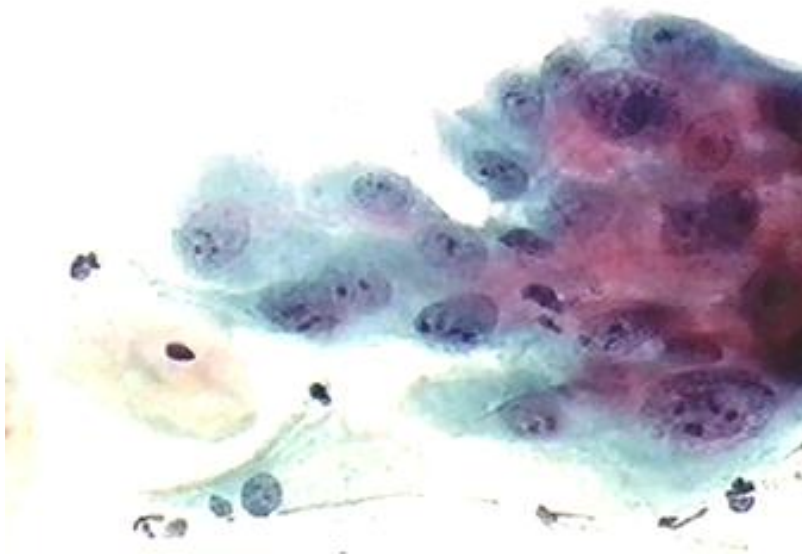
forstr. x 1000



- a. metaplastiske celler
- b. plasmaceller
- c. corpus karcinom

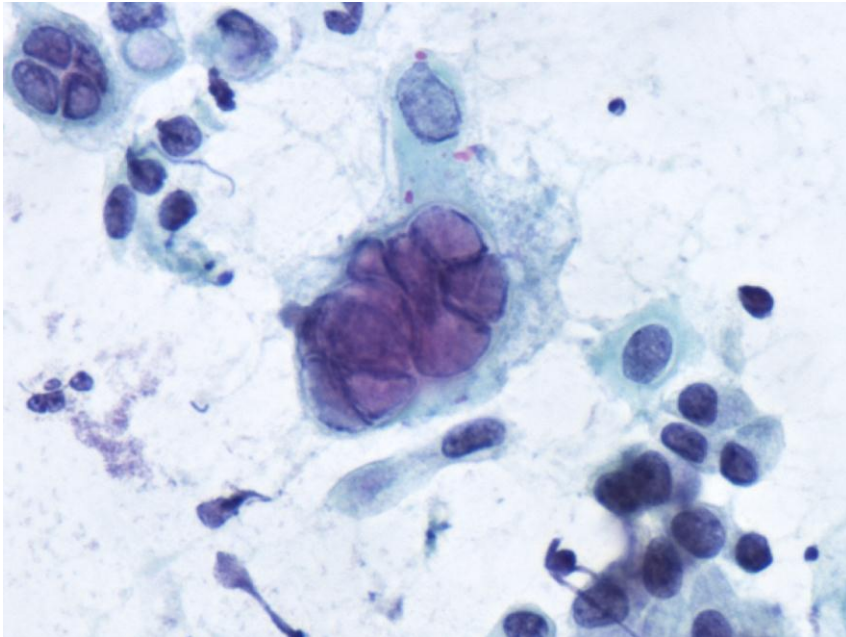
# 11

forstr. x 500



- a. tissue repair
- b. adenokarcinom
- c. decidua celler

# 12

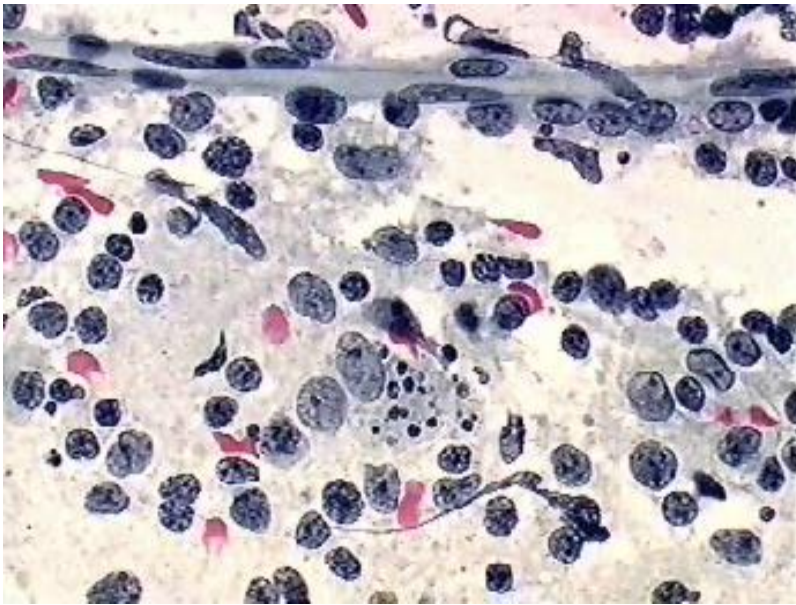


forstr. x 500

- a. Herpes virus
- b. Reaktive  
cylinderepitel celler
- c. AIS

# 13

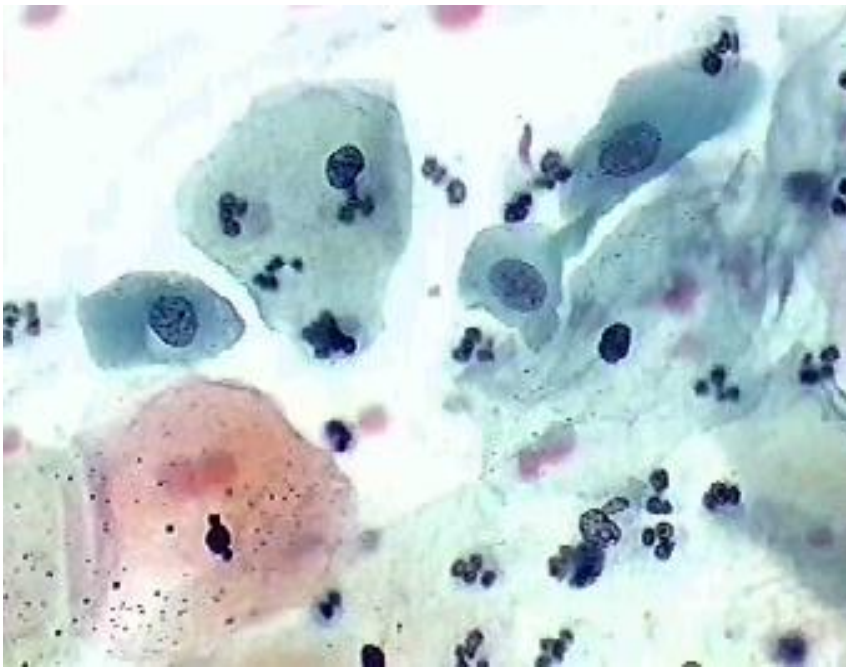
forstr. x 500



- a. småcellet karcinom
- b. blodkar og kronisk inflammation
- c. ikke keratiniserende karcinom

# 14

forstr. x 500

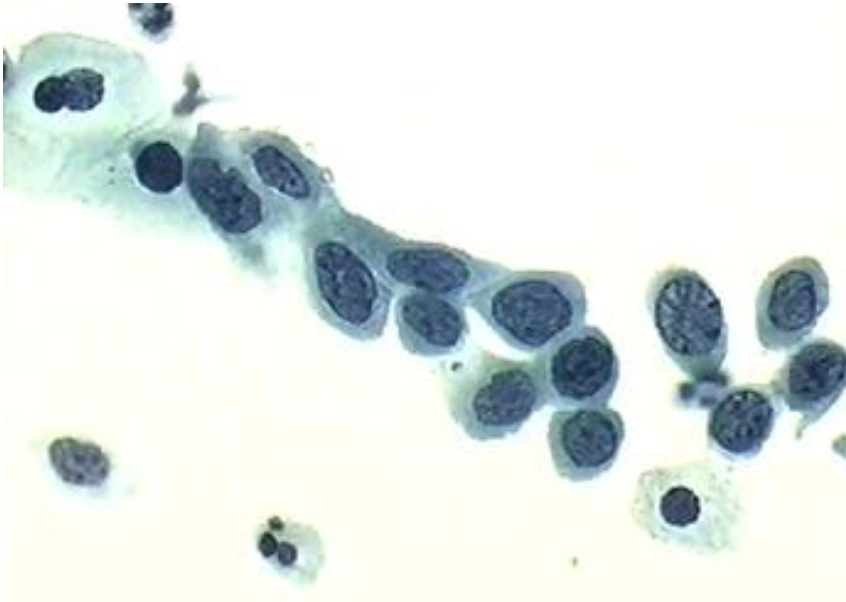


- a. metaplasia
- b. ASCUS
- c. LSIL



# 15

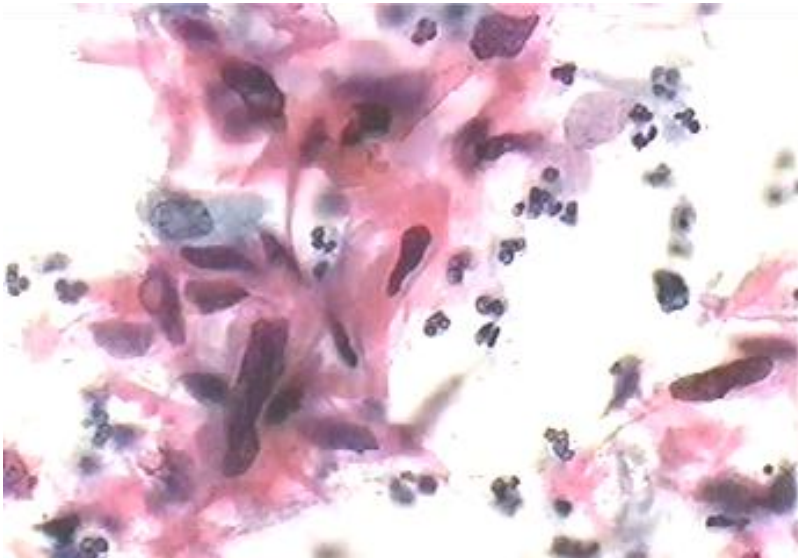
forstr. x 500



- a. ASC-H
- b. Planocellulært karcinom
- c. HSIL

# 16

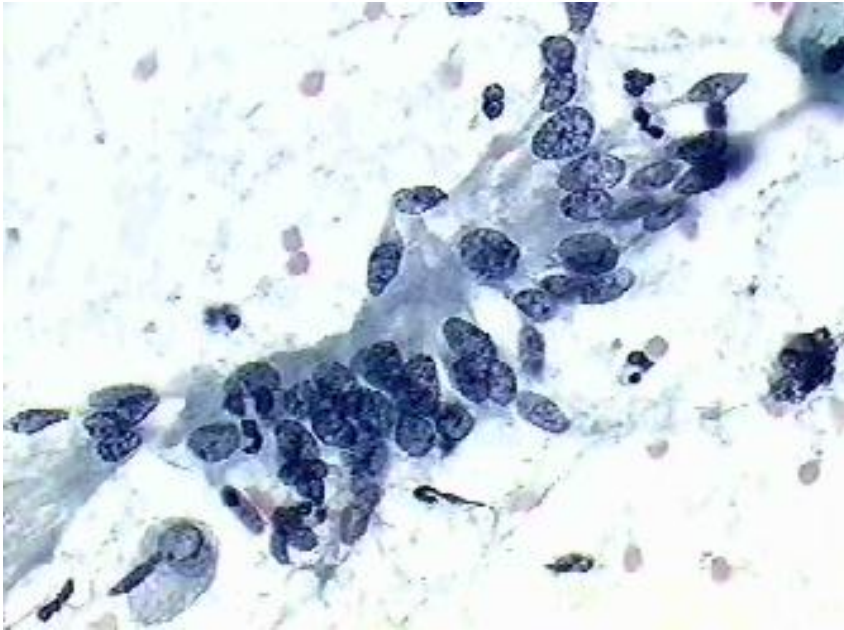
forstr. x 500



- a. dyskeratocyter
- b. LSIL
- c. keratiniserende karcinom

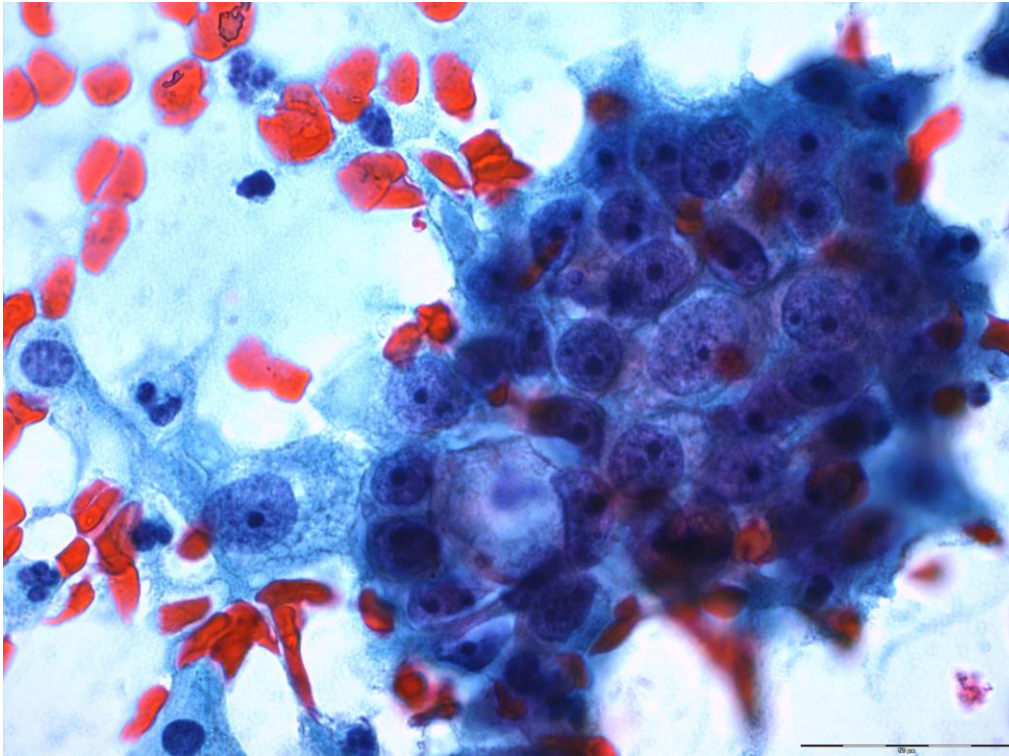
# 17

forstr. x 500



- a. HSIL
- b. AIS
- c. adenokarcinom

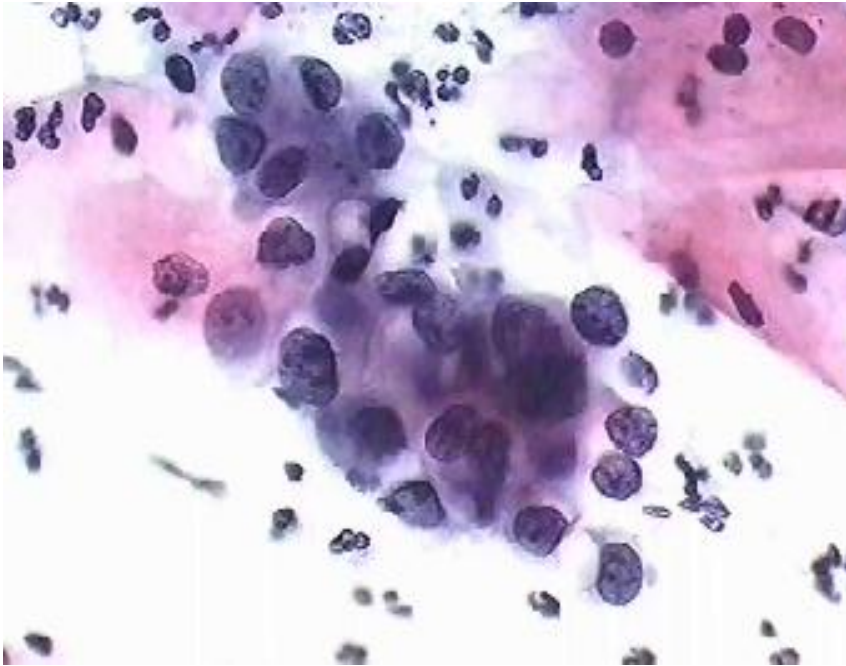
# 18



forstr. x 500

- a. HSIL
- b. AIS
- c. adenokarcinom

# 19

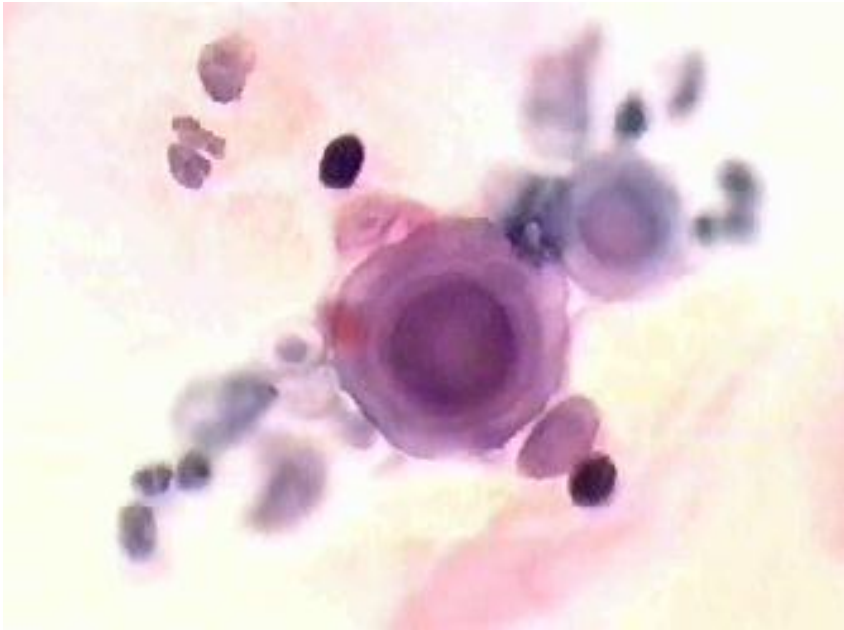


forstr. x 500

- a. HSIL
- b. adenokarcinom cervix
- c. adenokarcinom corpus

# 20

forstr. x 1000



- a. Psammomlegeme
- b. Pollen
- c. Enterobius vermicularis