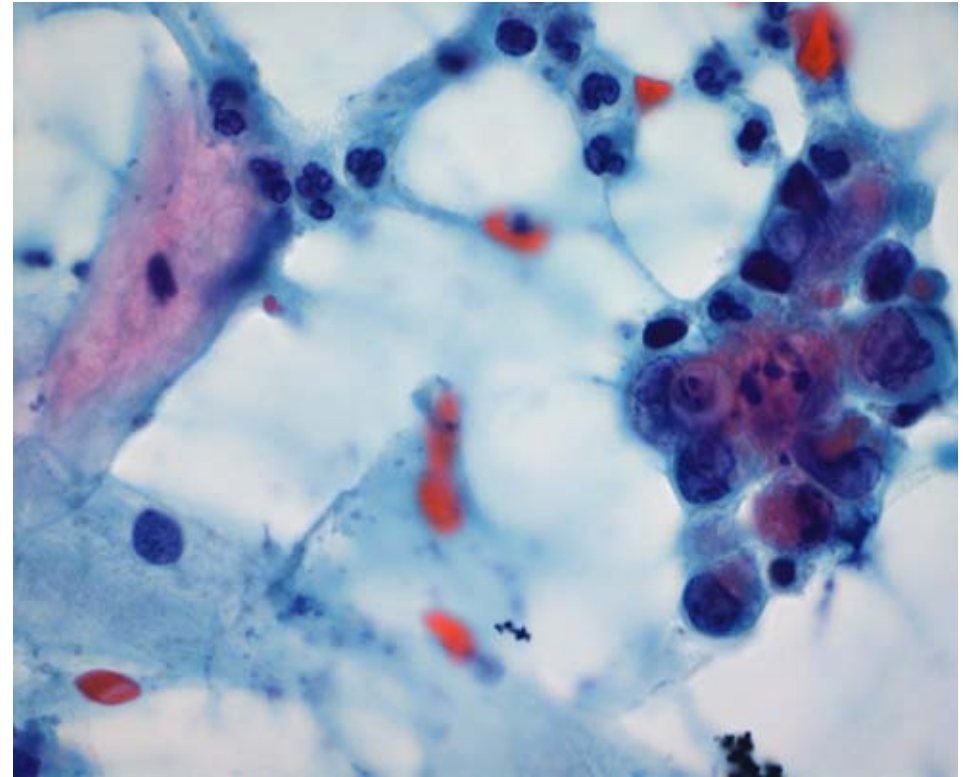
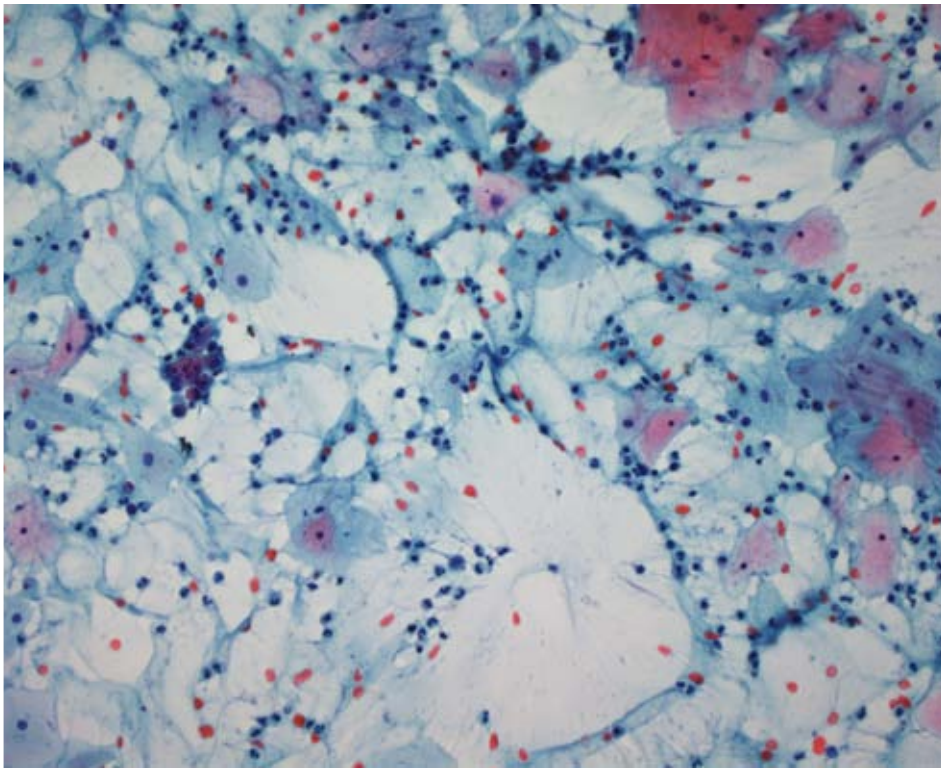


# Case 8

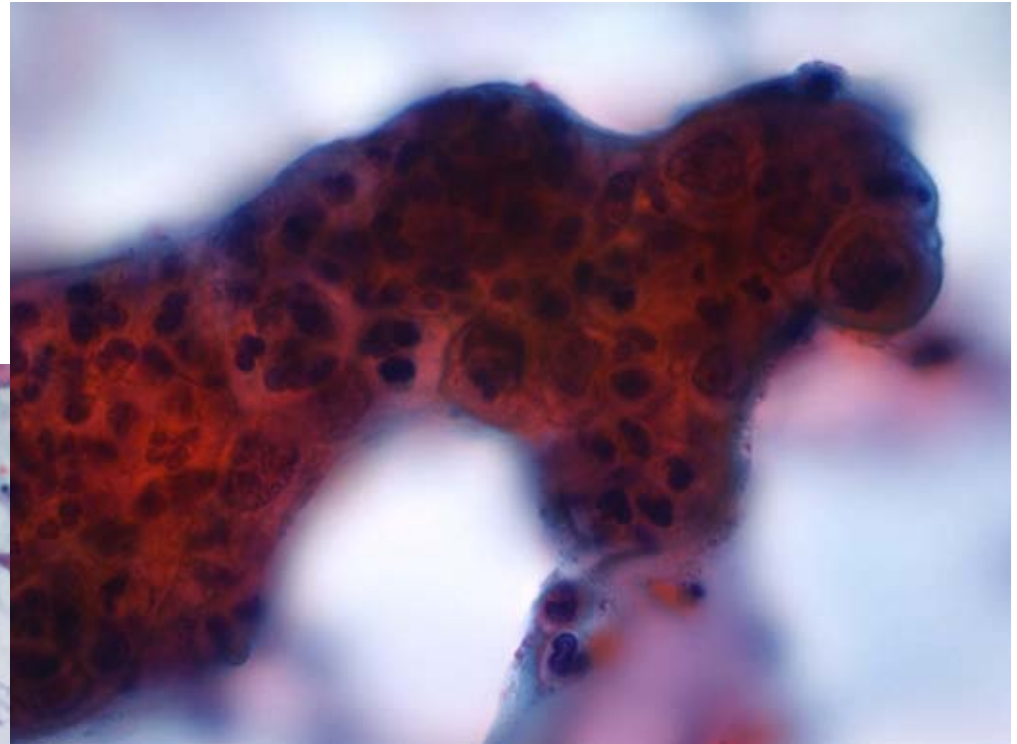
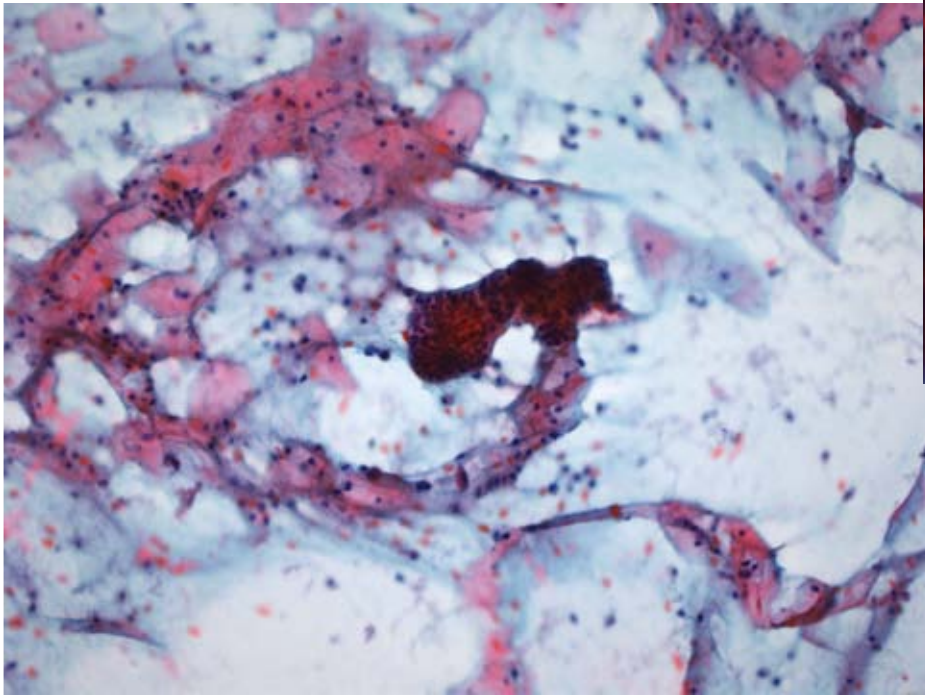
Kliniske oplysninger:

Smear (udstrygningsteknik) fra 52år  
kvinde med postmenopausal blødning

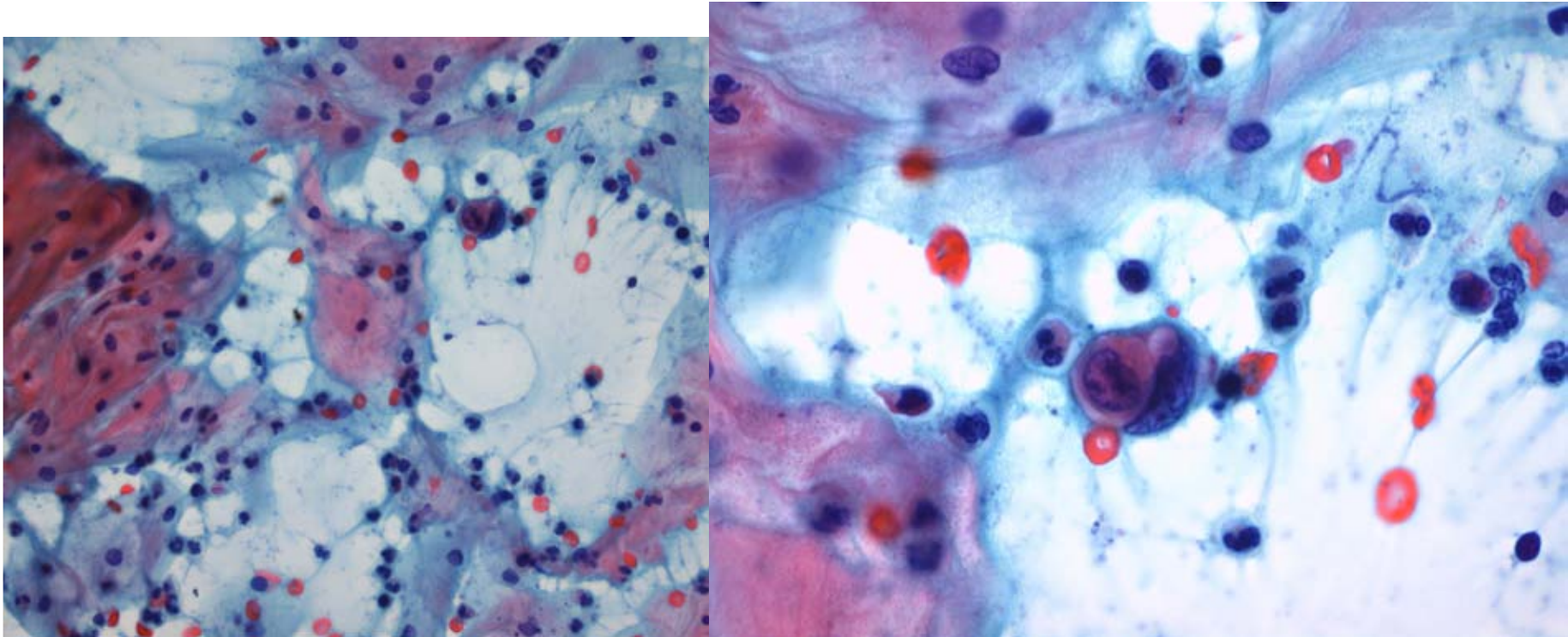
På ren baggrund gruppe af degenererede cylinderepitelceller antydnet glandulært arrangeret med kernepleomorfi, kernemembranirregularitet, leukofagocytose. Cytoplasmaet moderat stort basofilt eller eosinofilt.



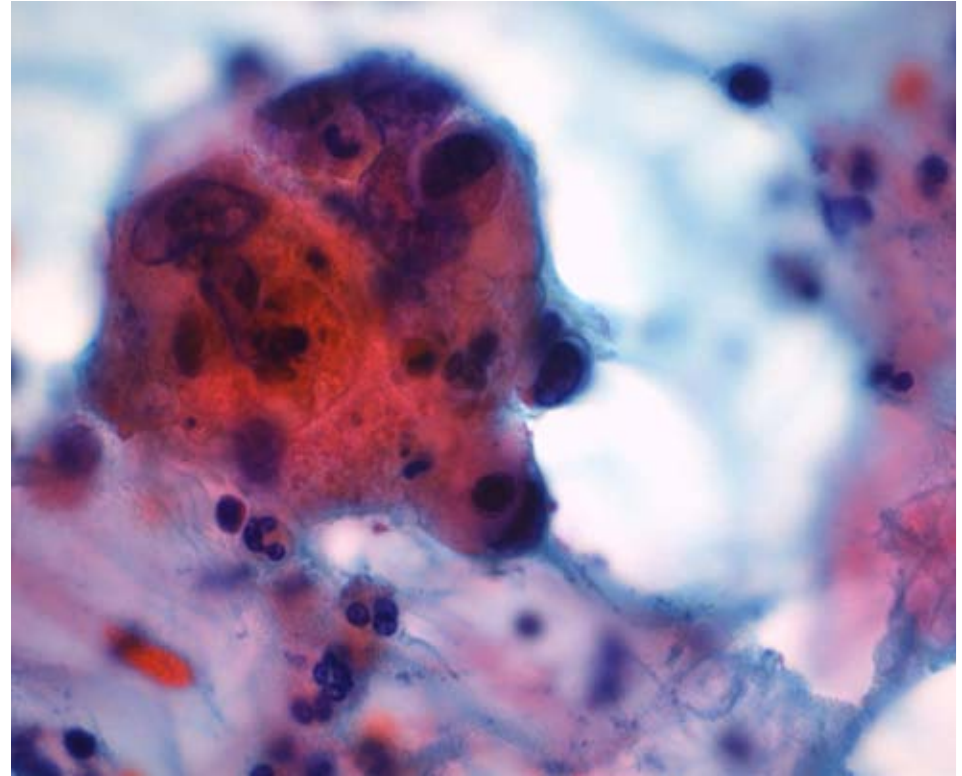
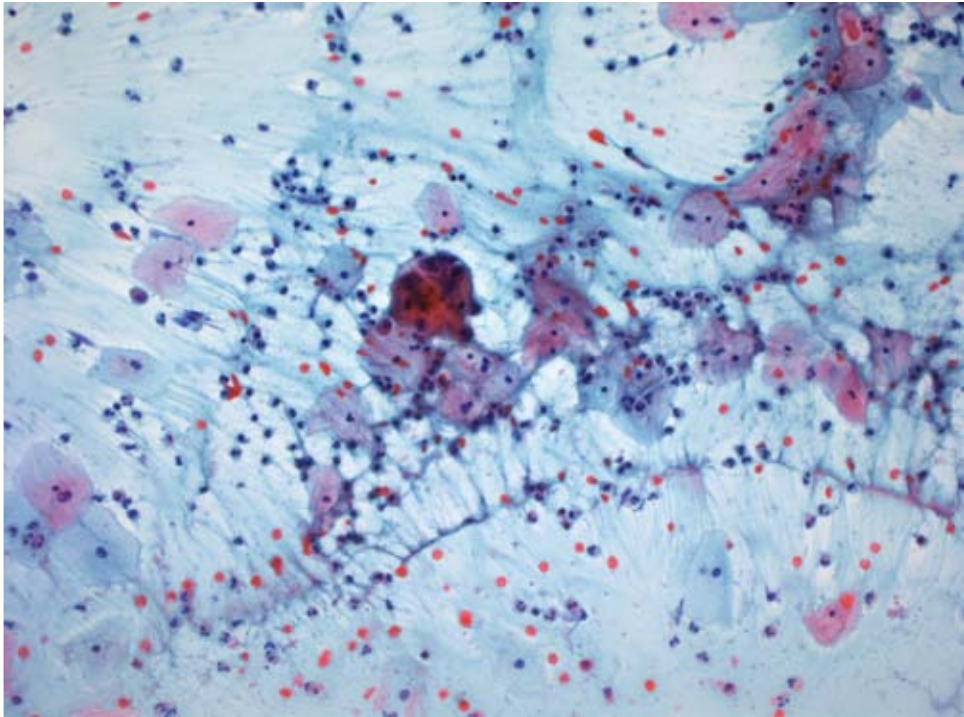
Antydnet papillært opbygget gruppe med udtalt granulocytinfiltration. Pleomorfe celler med irregulær kernemembarn, moderat stort cytoplasma. Nukleoler anes.



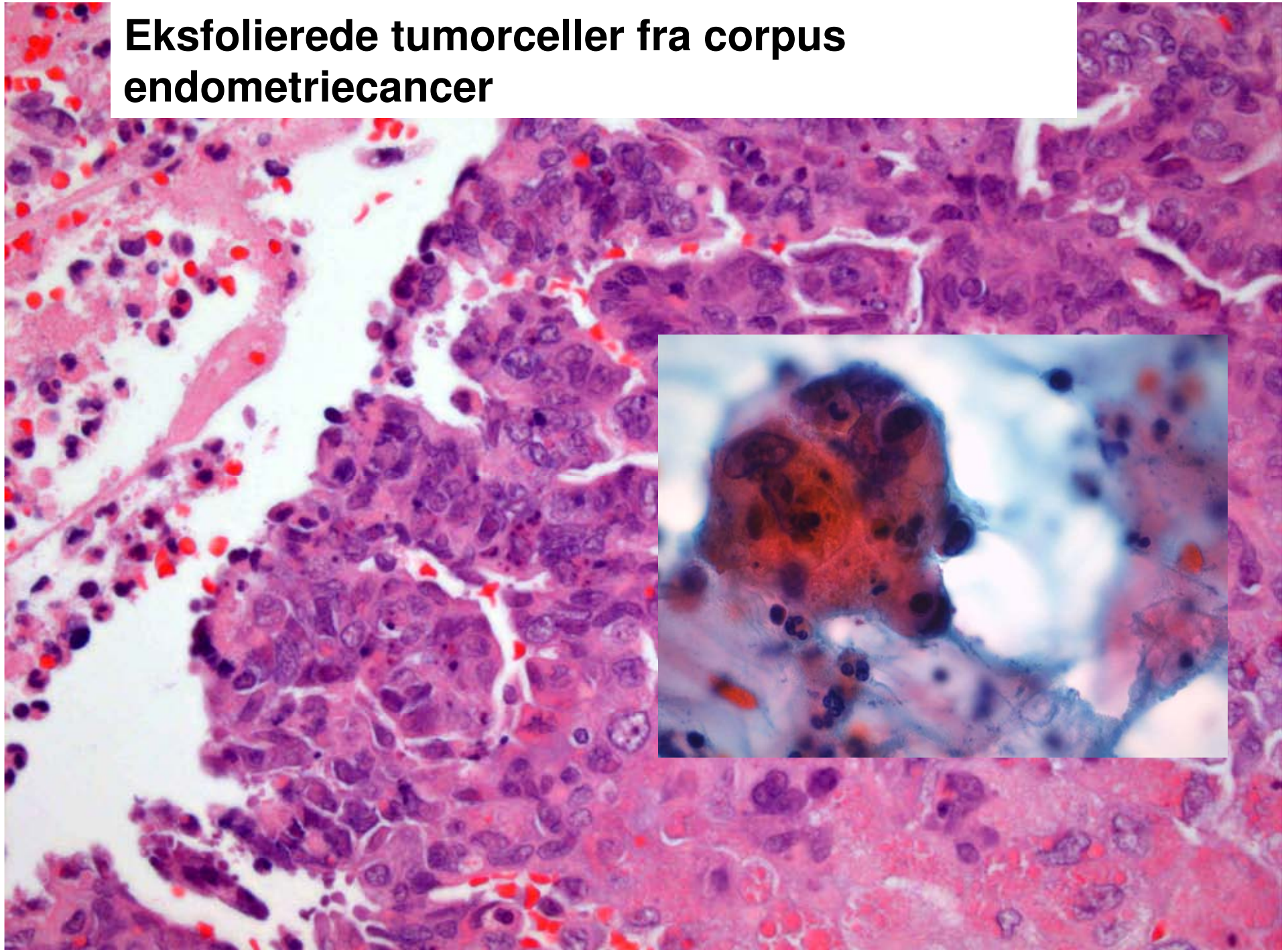
Relativ ren baggrund med 2 tæt arrangerede tumorceller med pleomorfe irregulære kerner med uensartet fordelt kromatin. Nukleoler ses. Varierende cytoplasmamængde.

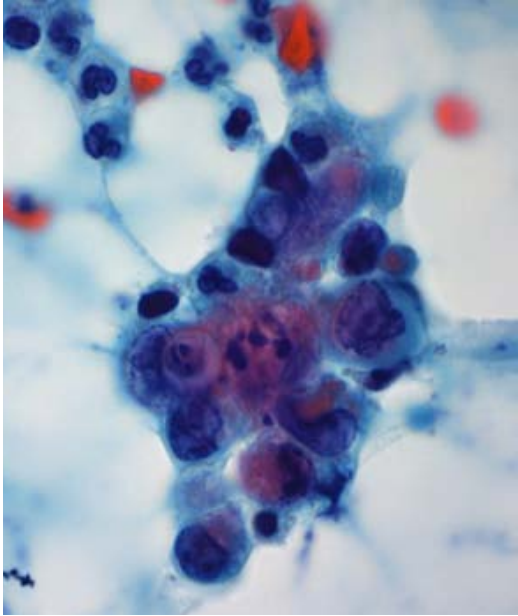
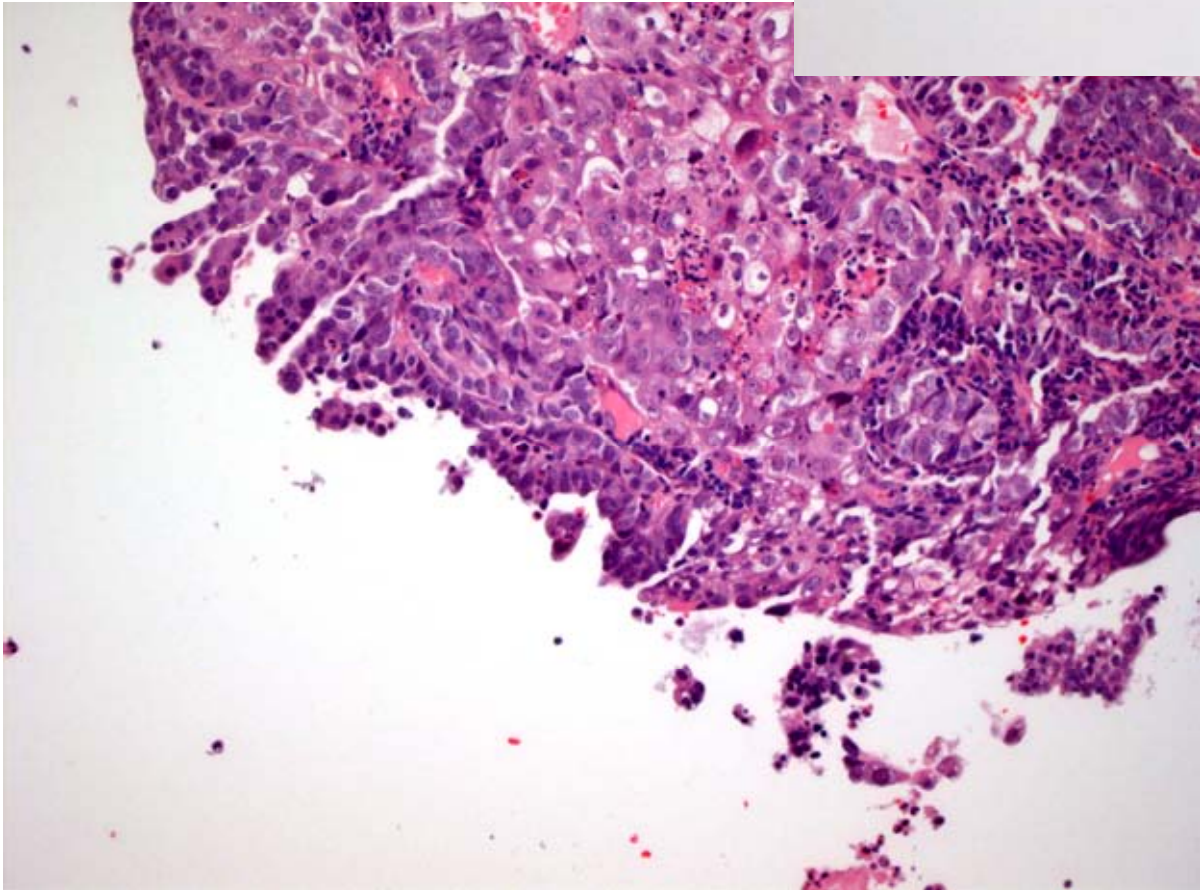
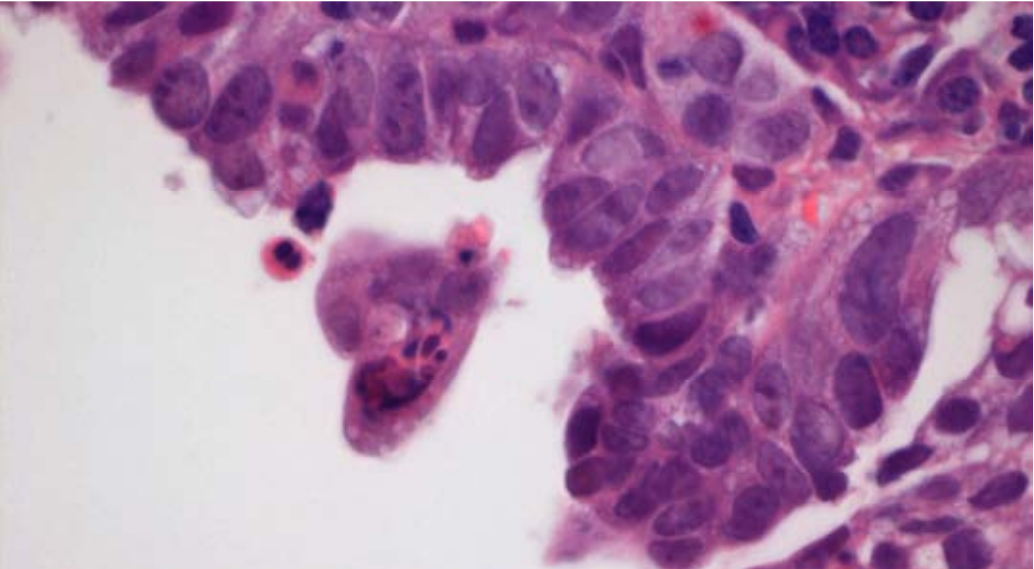


Relativ ren baggrund med 'cellebold' indeholdende degenererede tumorceller med rigeligt grynet cytoplasma. Leukocytinfiltration.



# Eksfolierede tumorceller fra corpus endometriecancer





# Endometrioidt adenokarcinom

