

Case 3

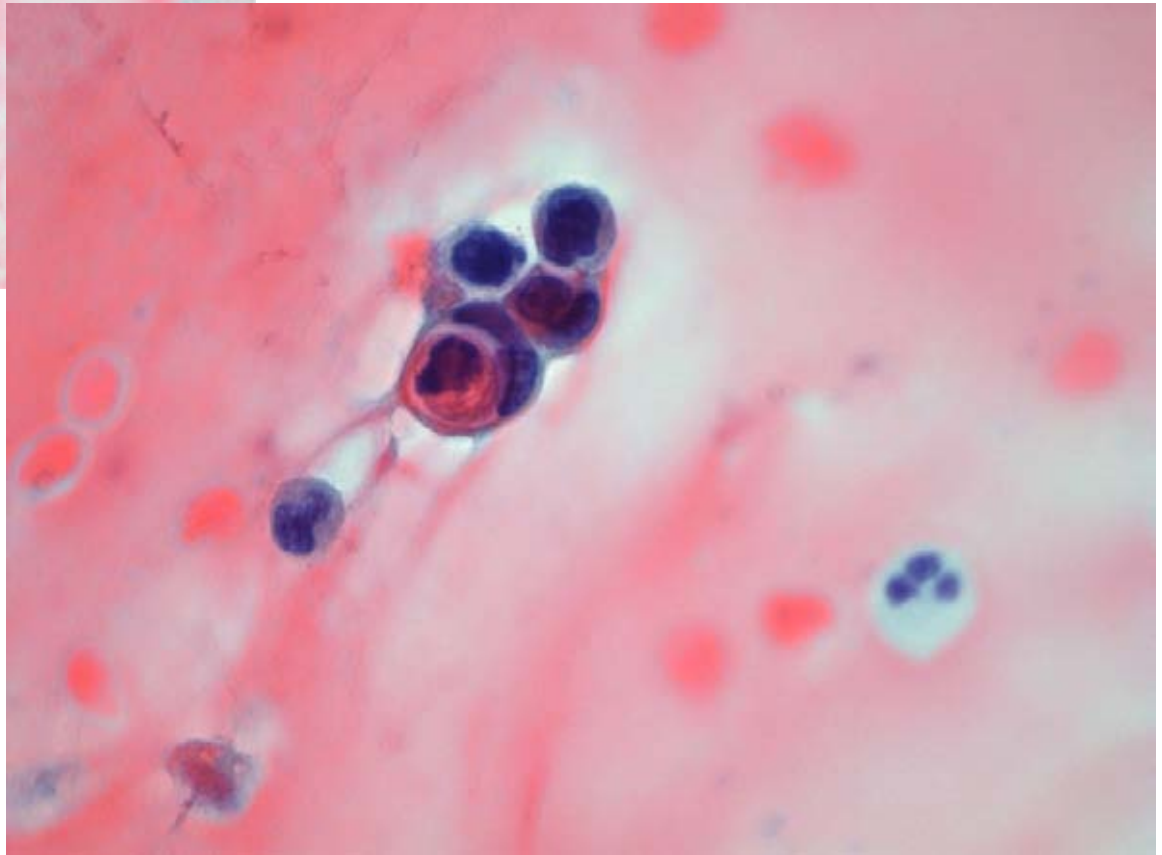
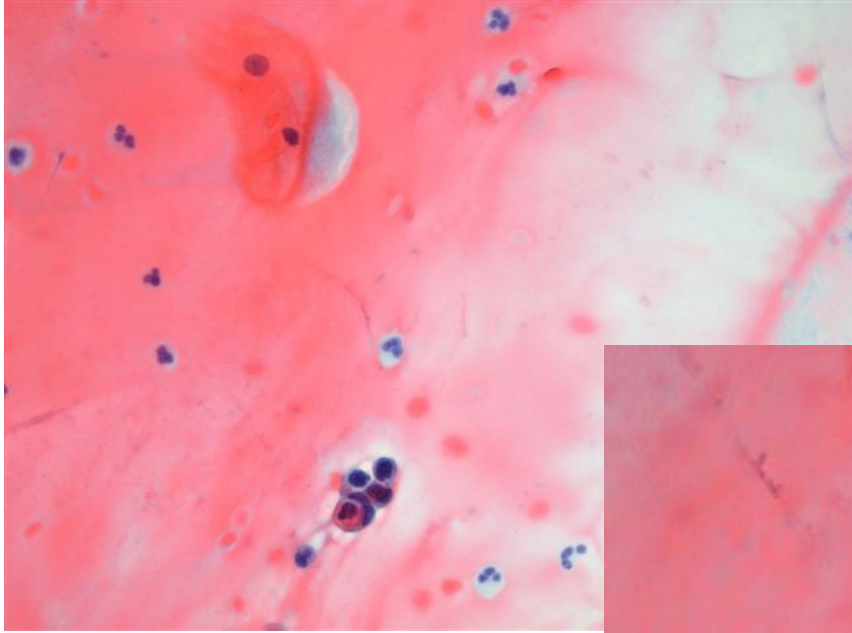
Kliniske oplysninger:

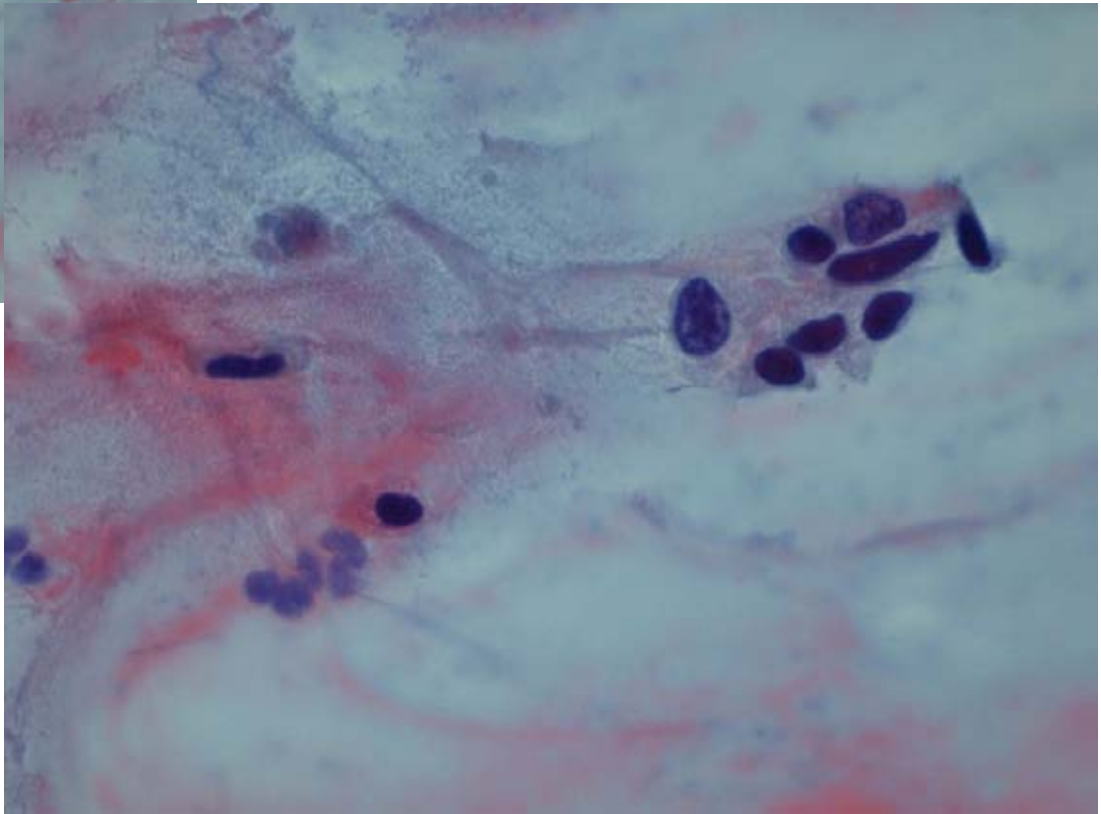
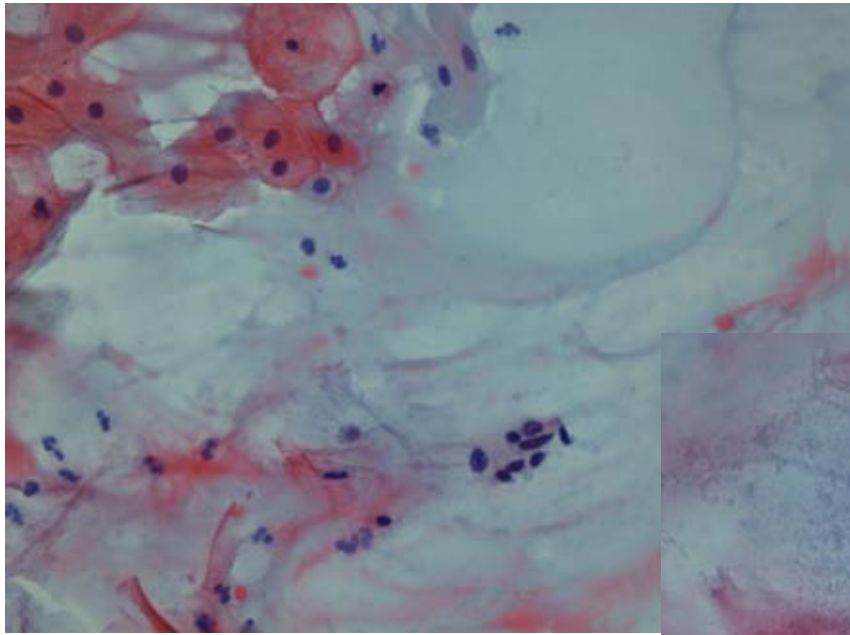
Konventionelt smear

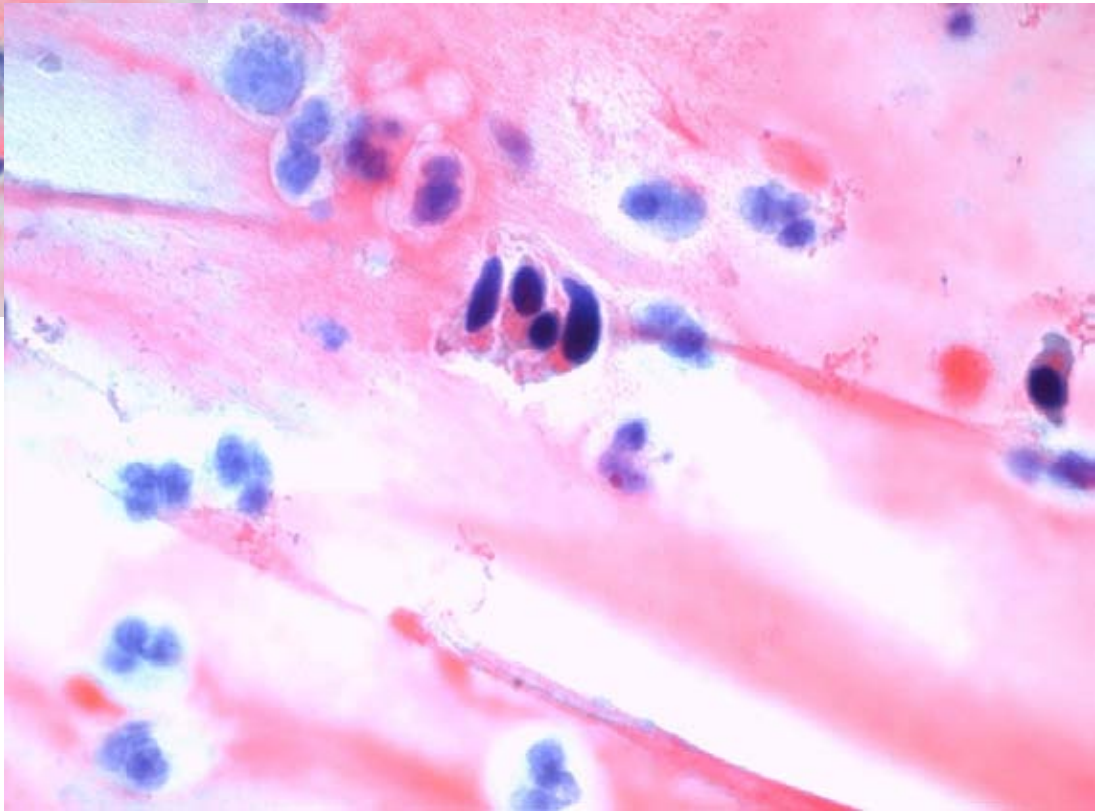
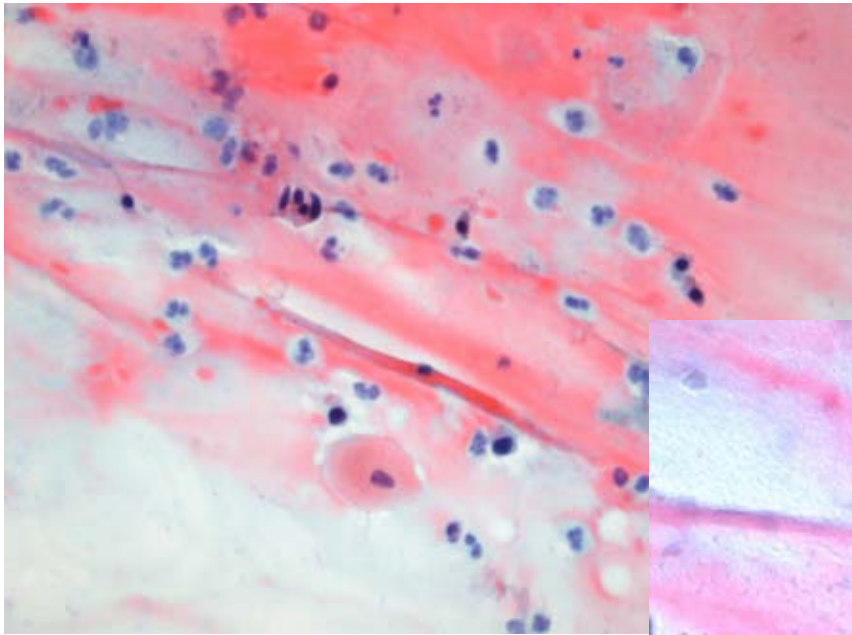
58 årig kvinde med postmenopausal blødning

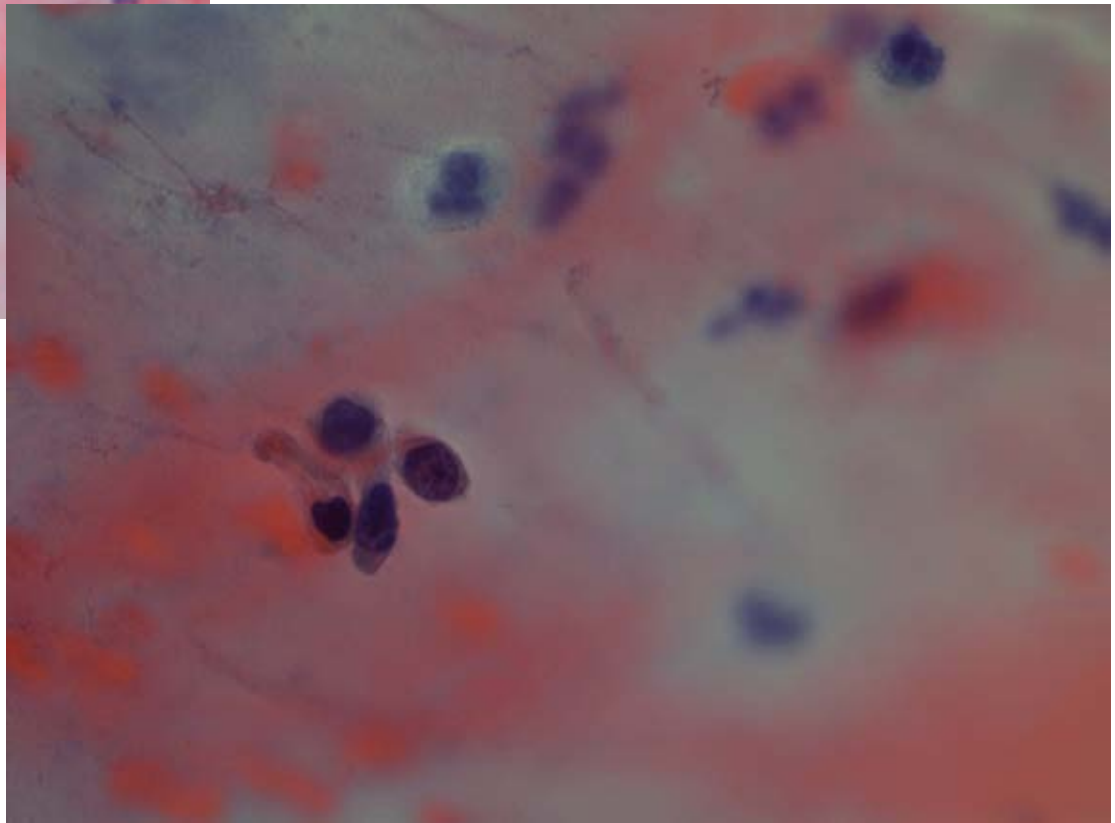
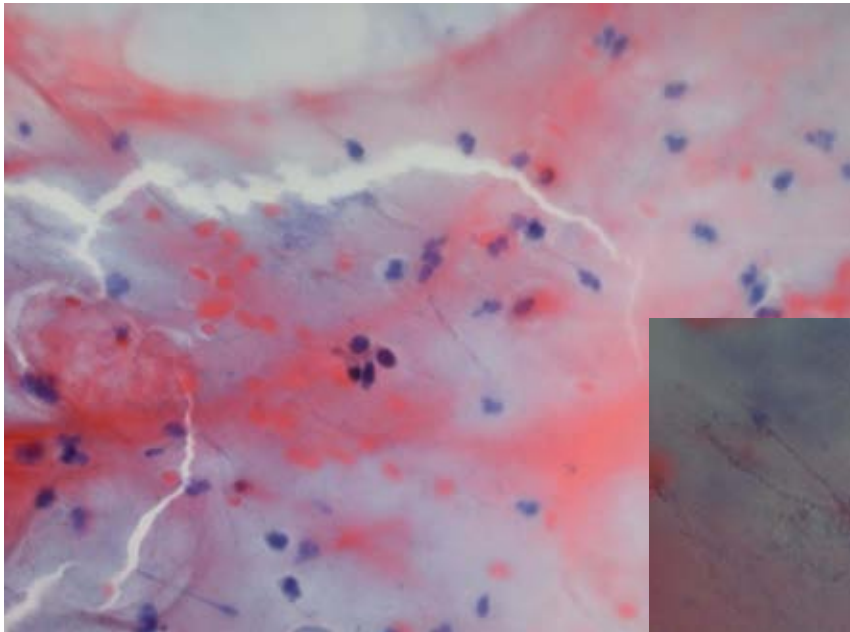
Tidligere smear negative

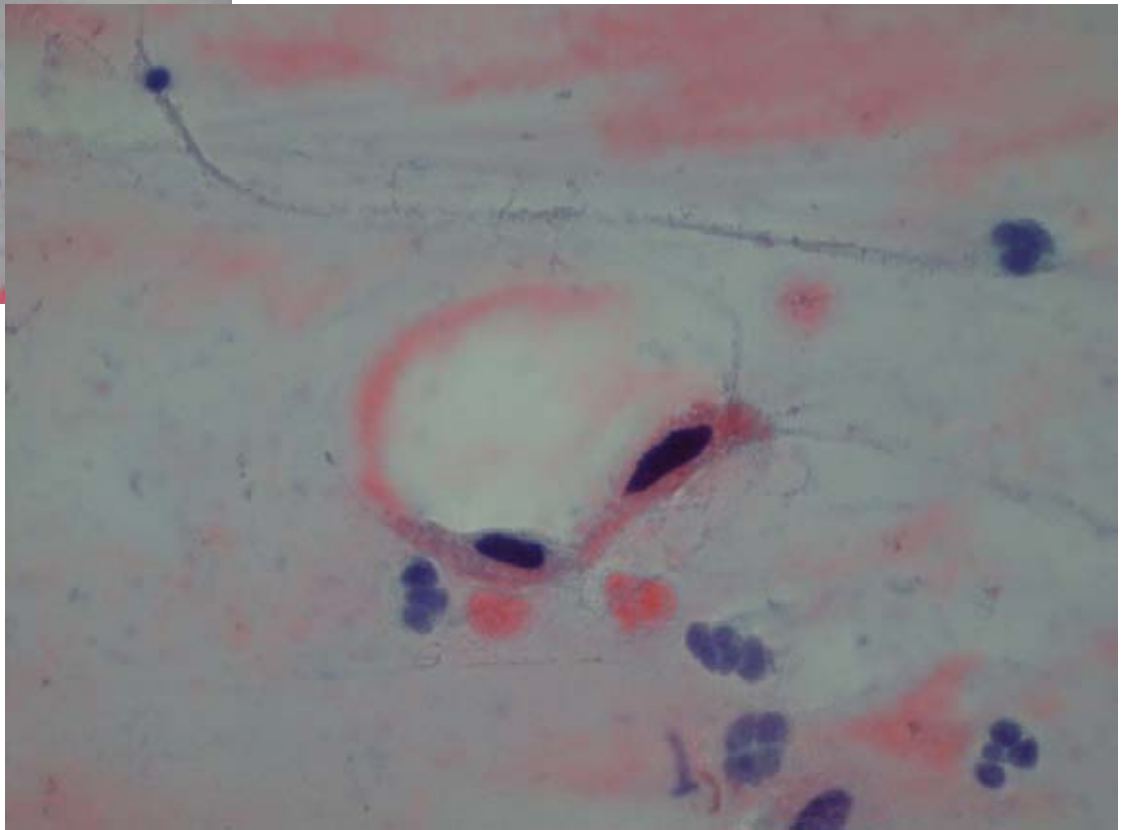
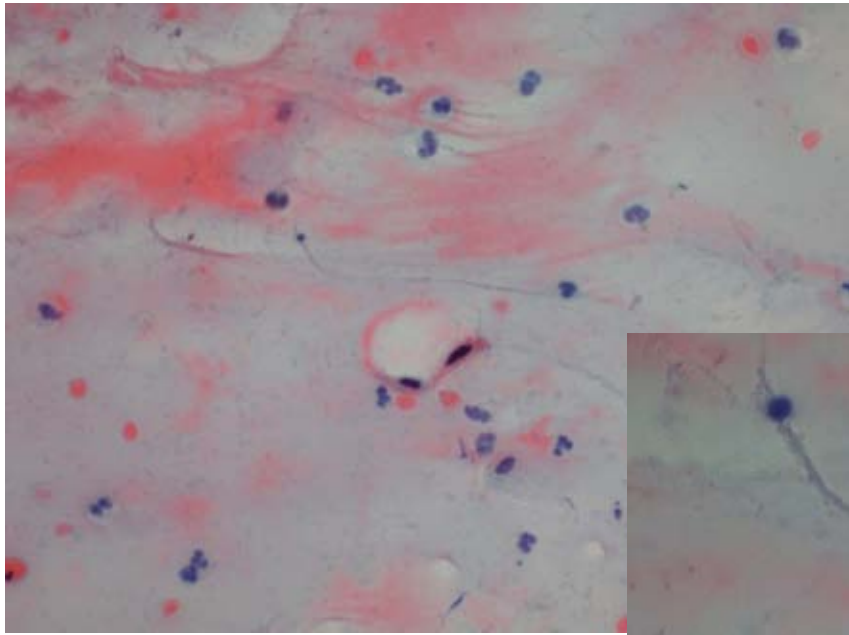
Opereret for c. recti 2007









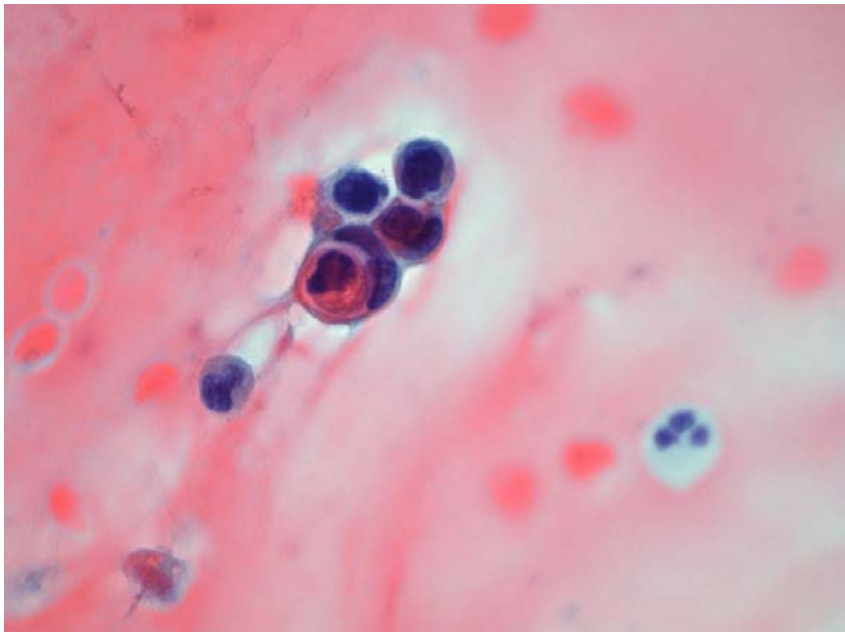


Oprindelige cytologiske diagnose

- Atypiske cylinderepitelceller - muligvis fra endometrium
- Henvises til gynækologisk specialundersøgelse

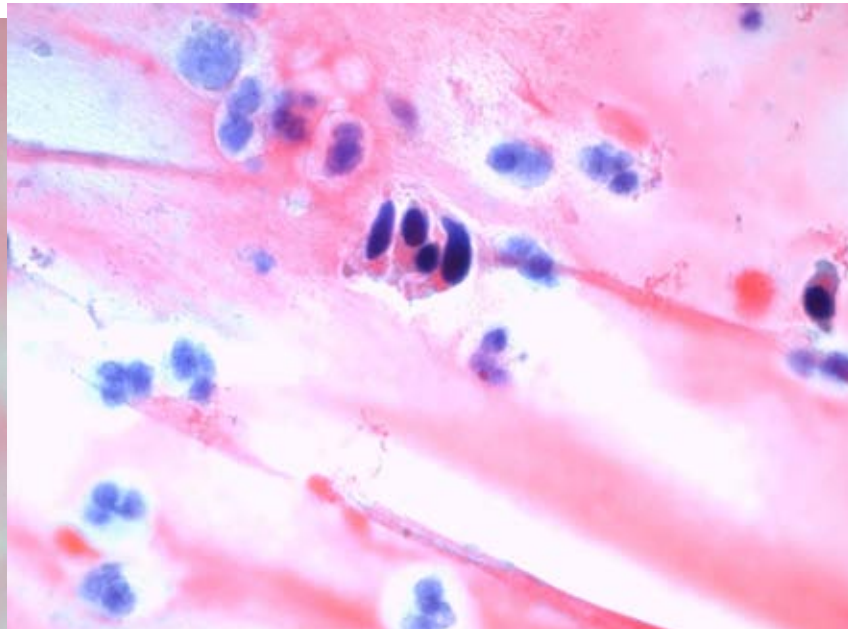
Vigtigste cytologiske kriterier:

- cellulær pleomorfi
- høj k/c ratio
- kernemembran irregularitet
- "celle i celle"



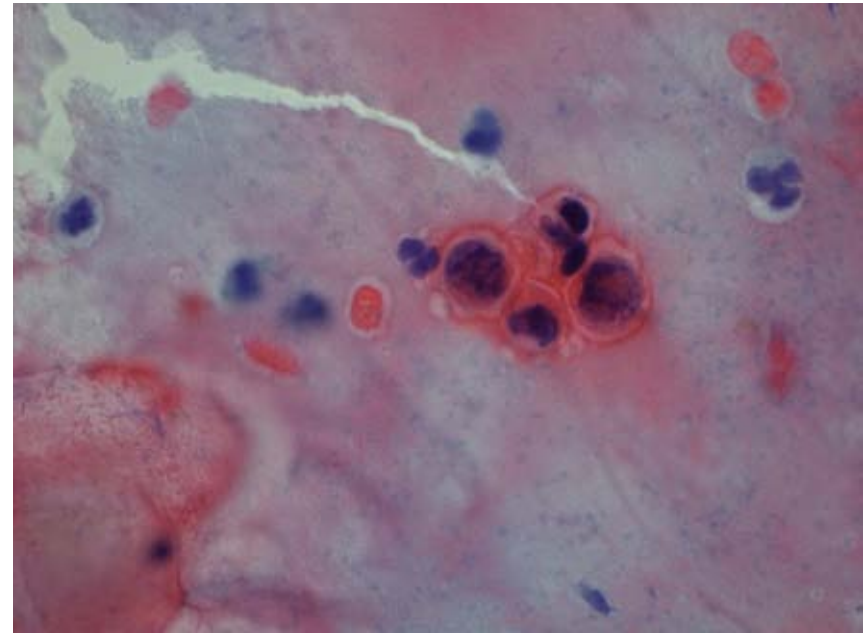
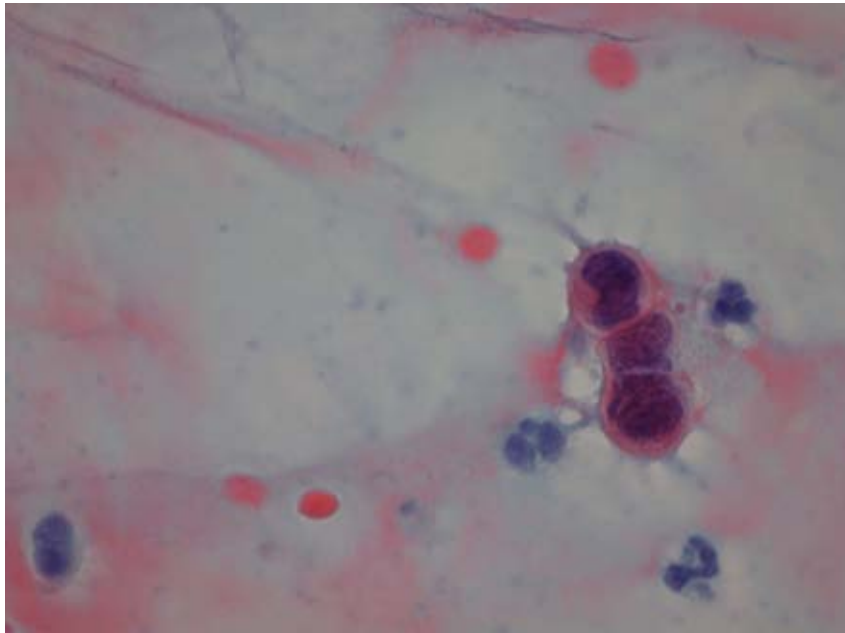
Vigtigste cytologiske kriterier:

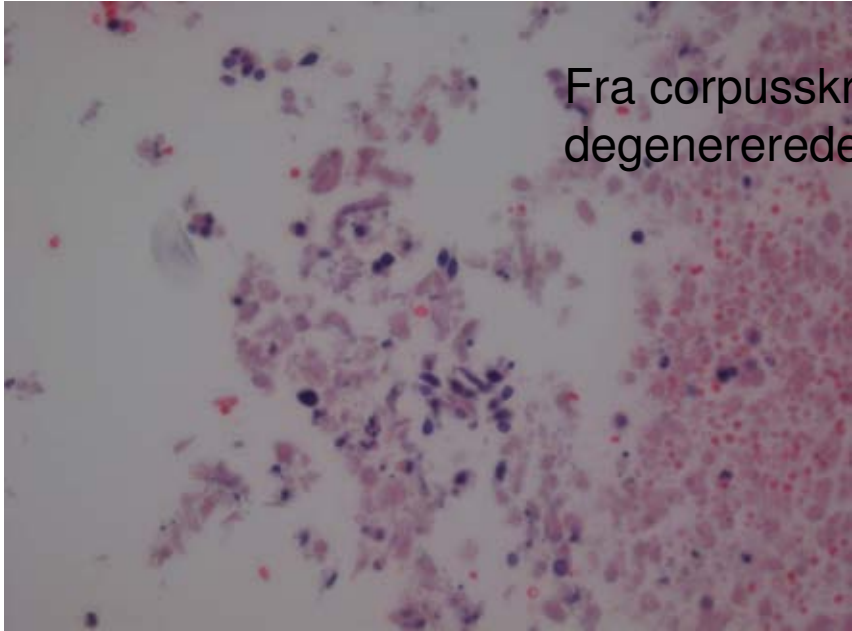
- cylindroide celler med høj k/c ratio
- mørke, degenererede kerner



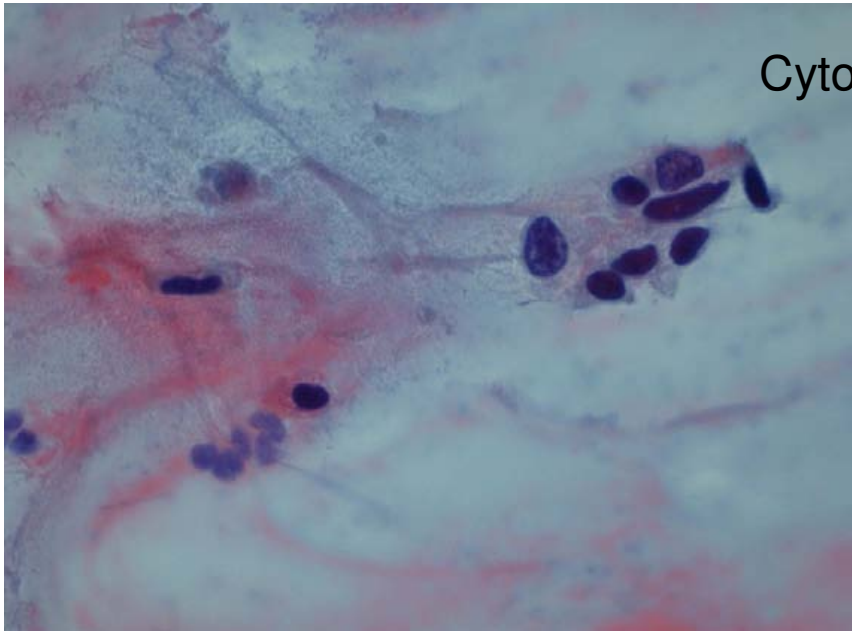
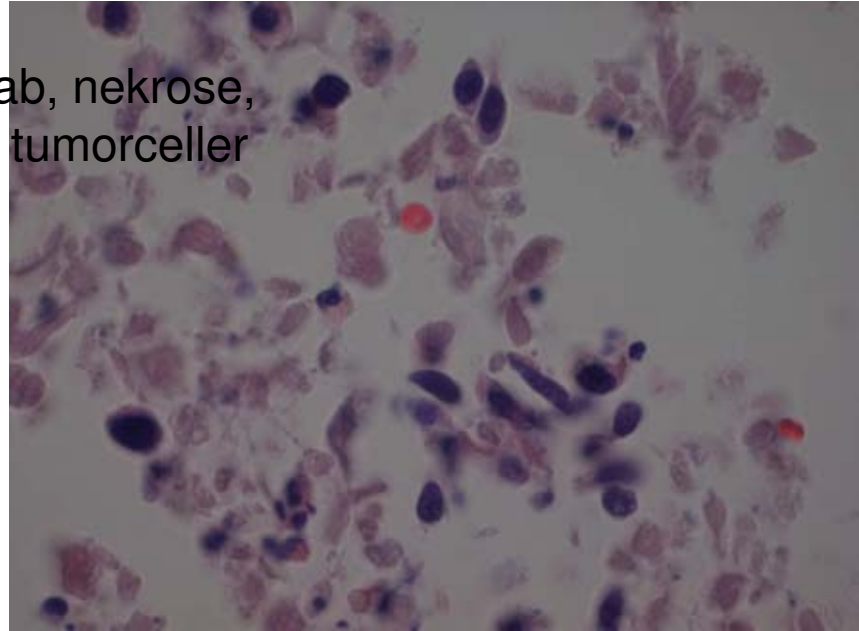
Vigtigste cytologiske kriterier:

- Små celler med høj k/c ratio og irregulær kernemembran

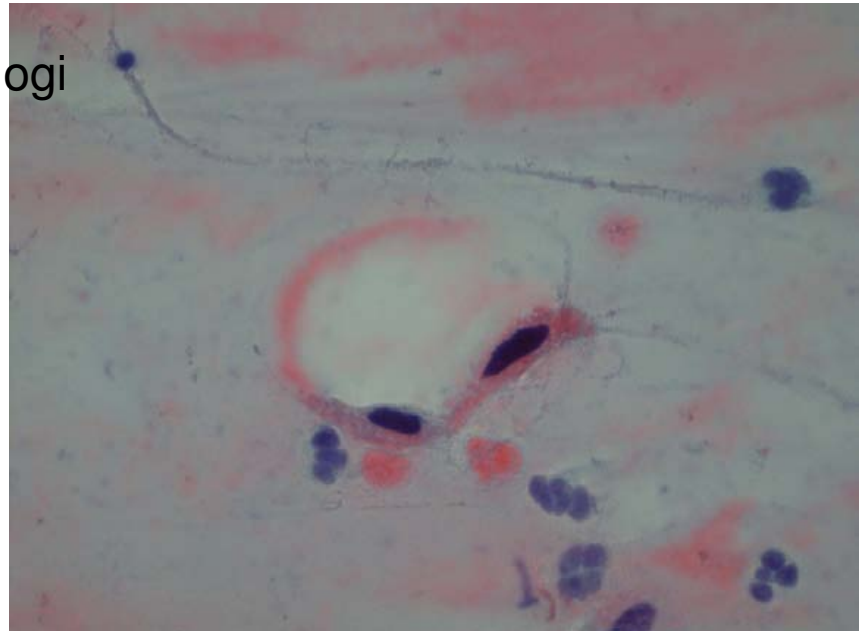




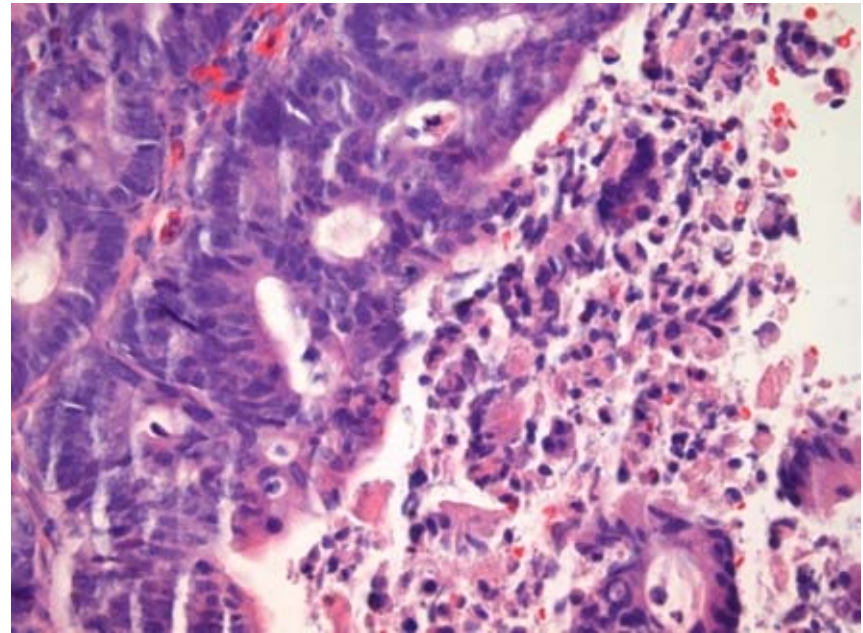
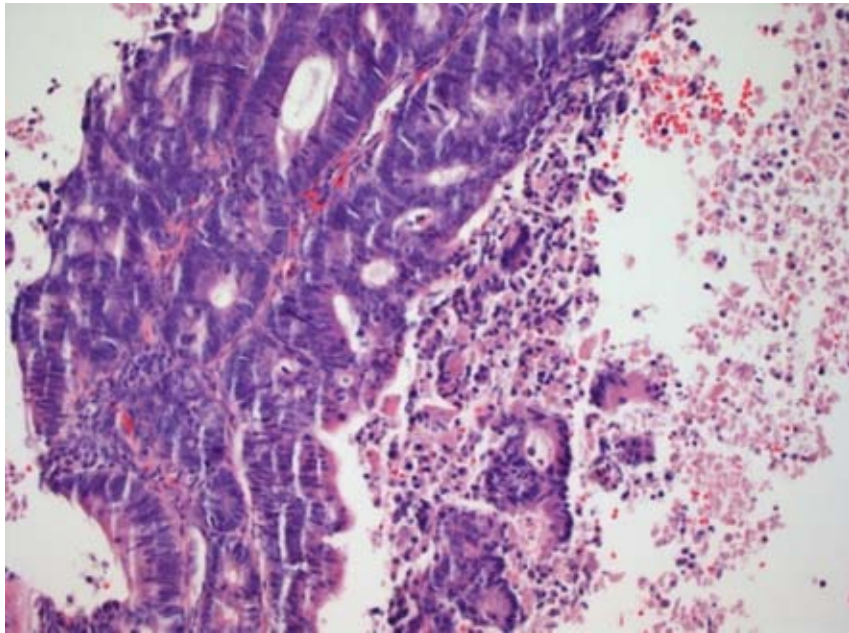
Fra corpuskrab, nekrose,
degenererede tumorceller



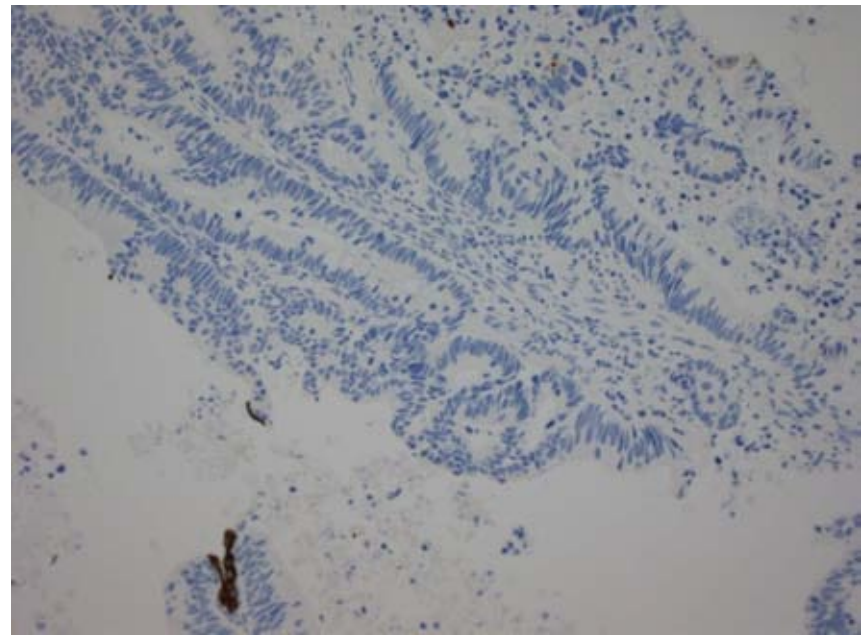
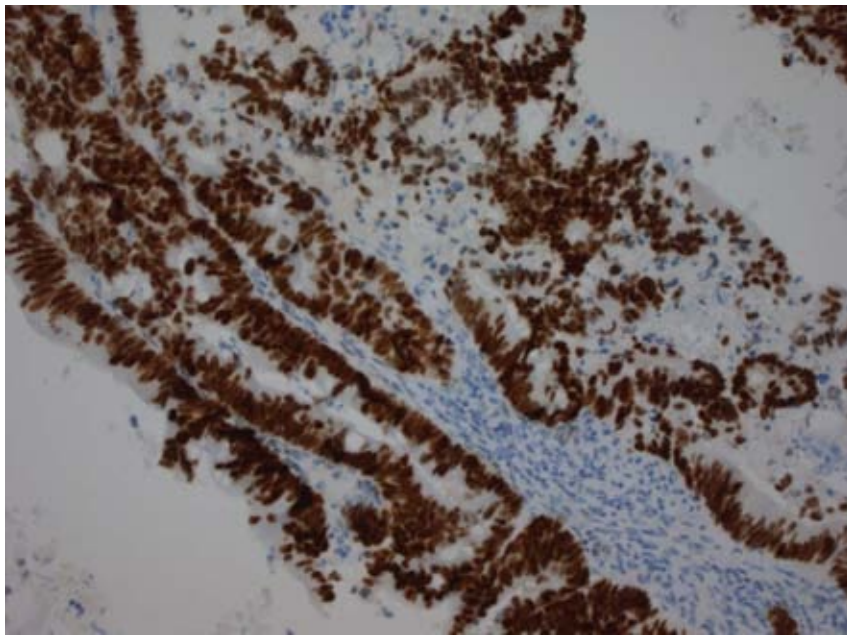
Cytologi



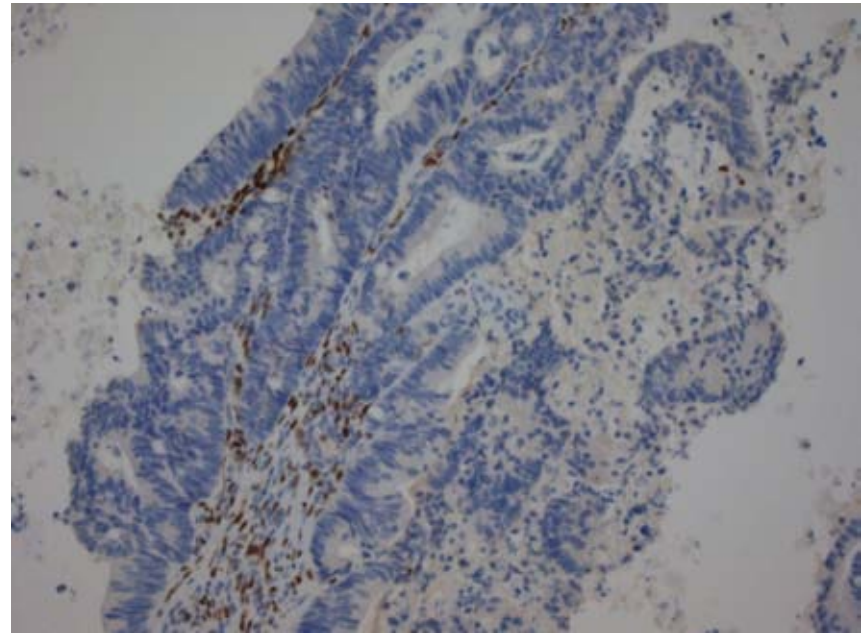
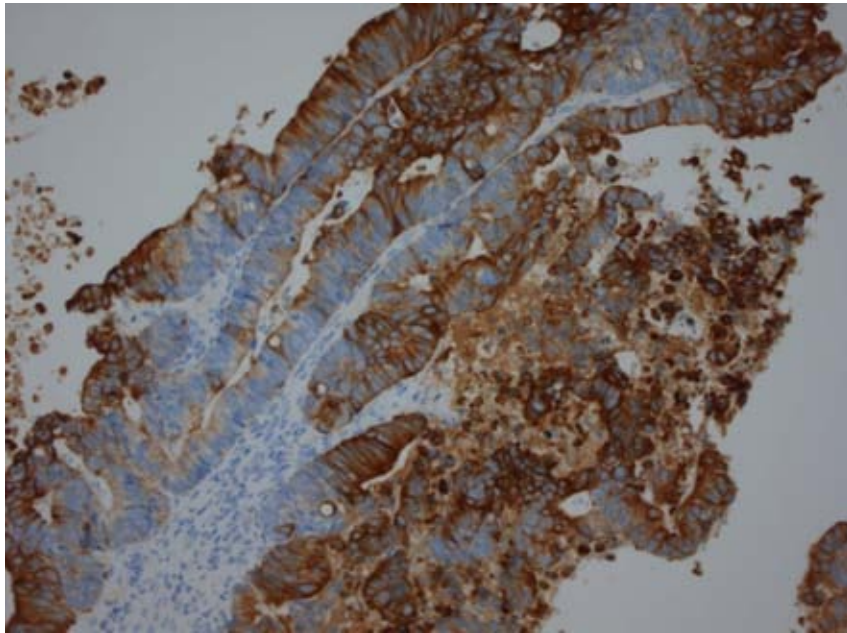
Corpuskrab med adenokarcinom



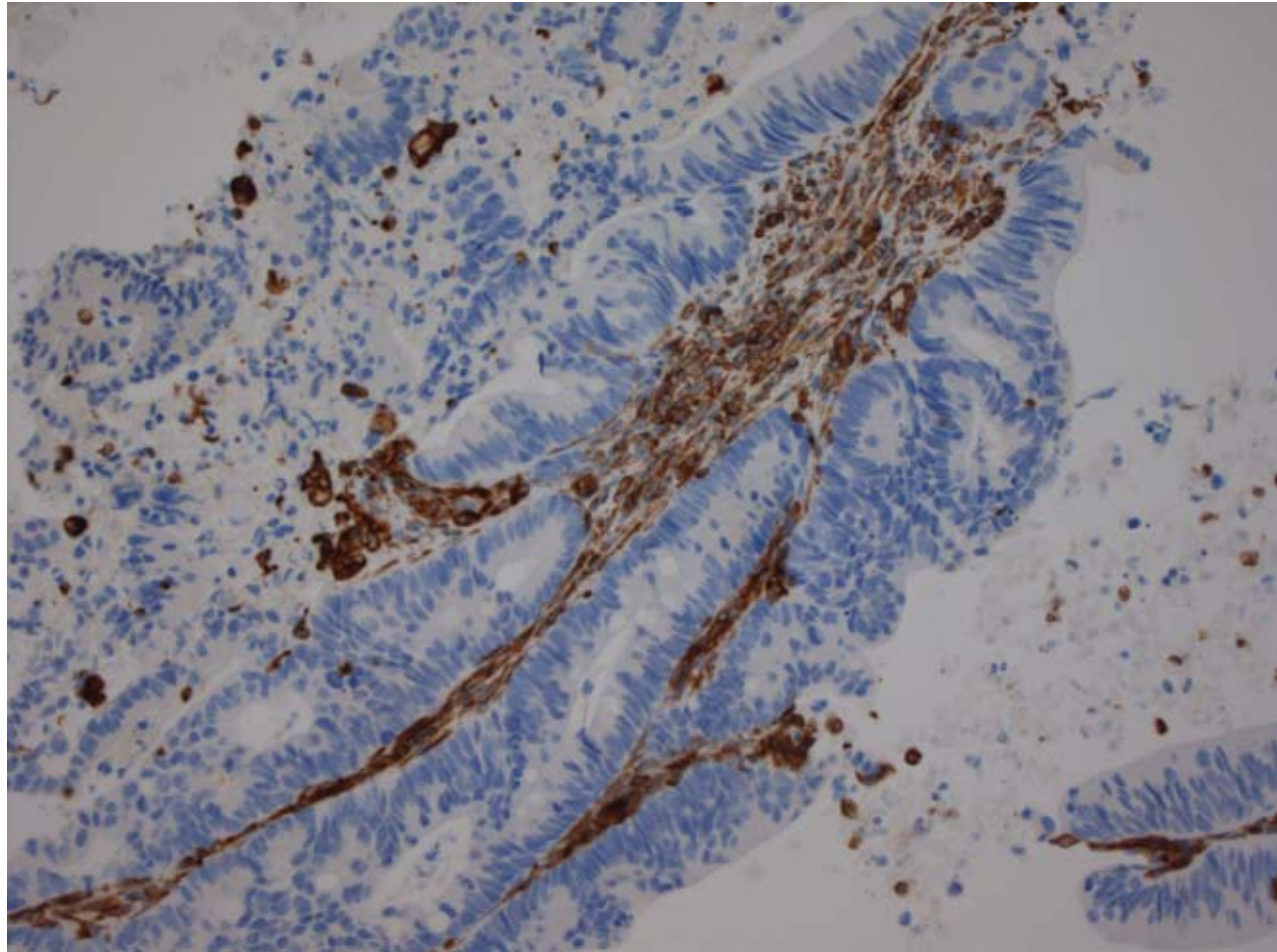
Positiv CDX2 (tarmmarkør) Negativ CK7



Positiv CK20 (tarmmarkør) Negativ østrogenreceptor



Negativ vimentin



Diagnose

- Metastase fra coloncancer