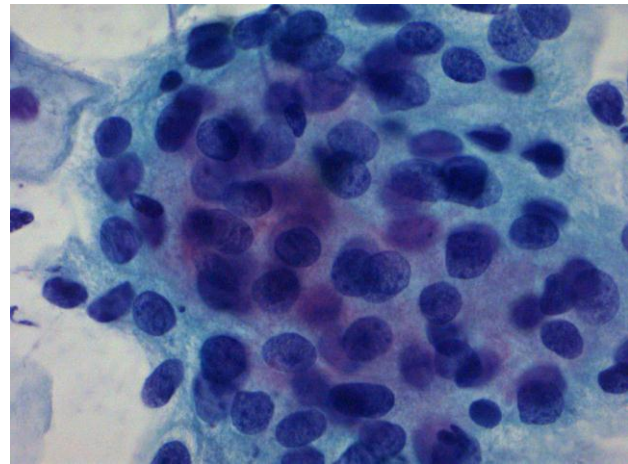
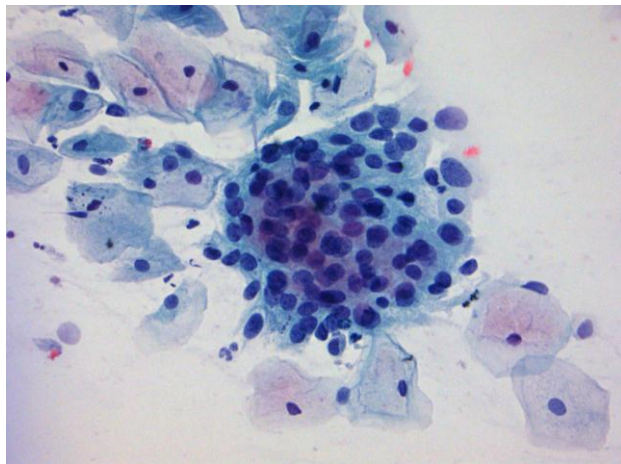
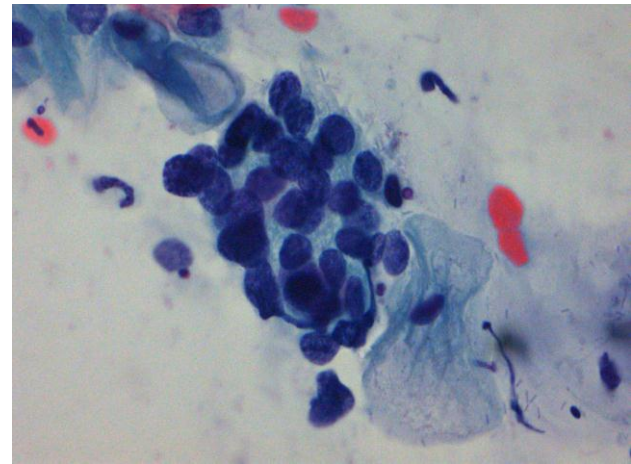
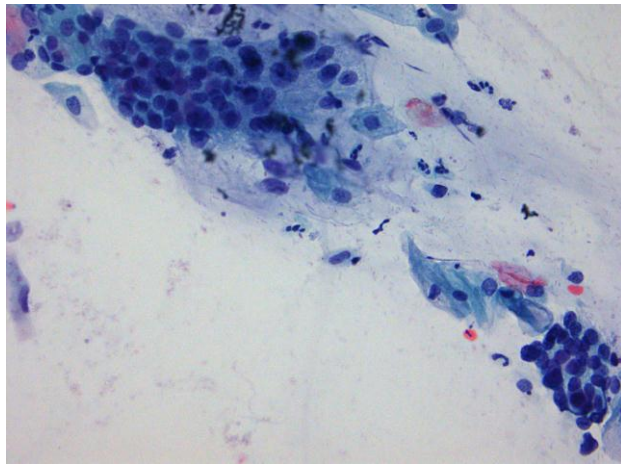


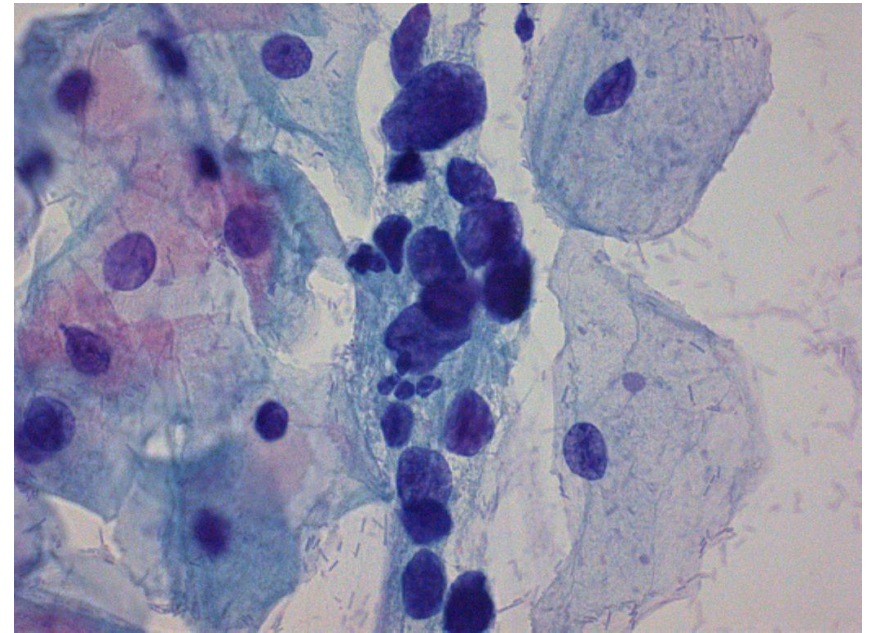
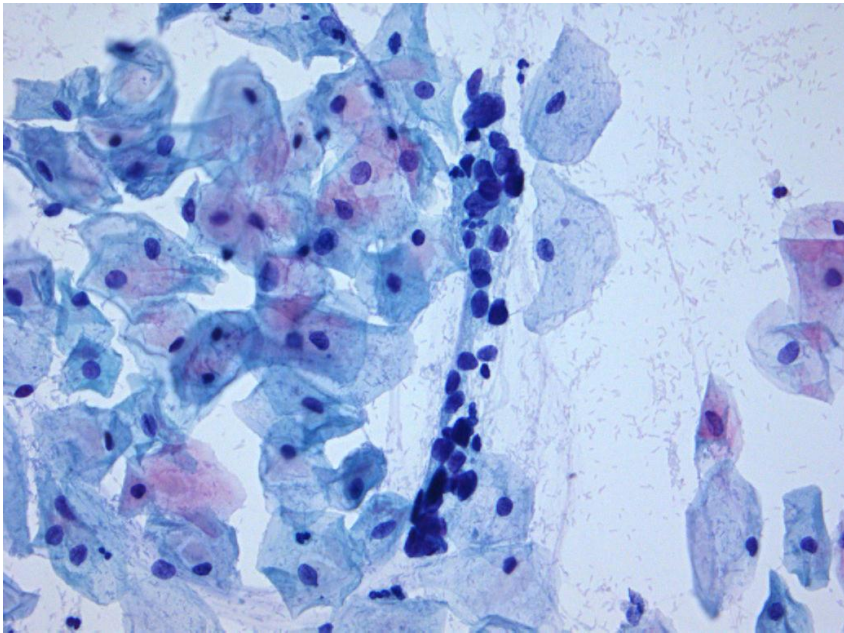
Case 1

55 år, indbudt, velscreenet, ingen tidligere positive prøver



Case 1

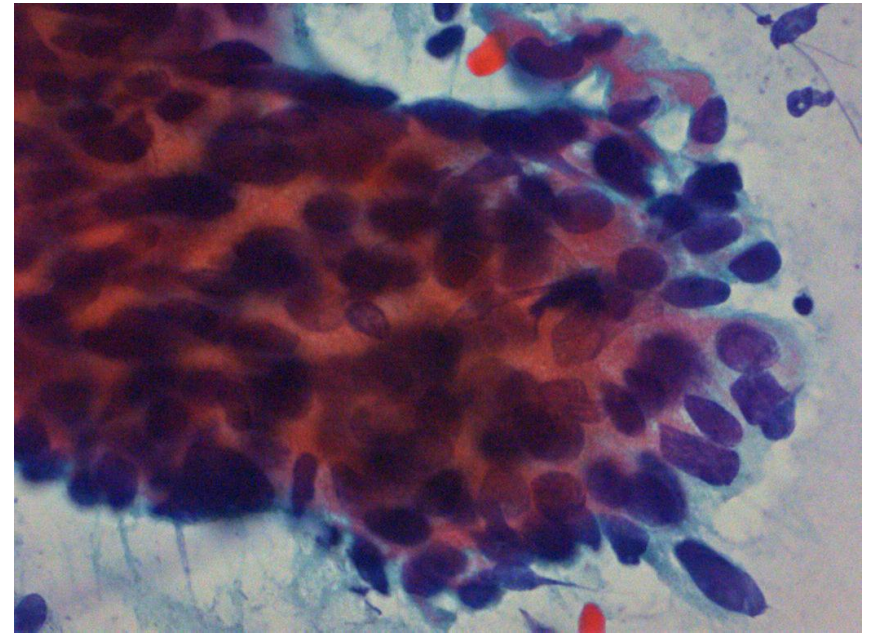
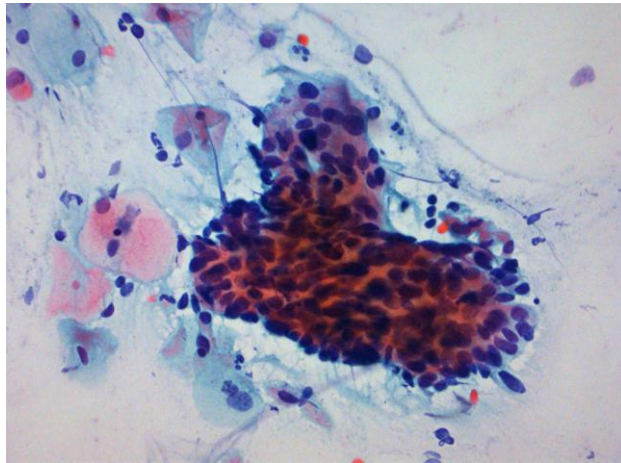
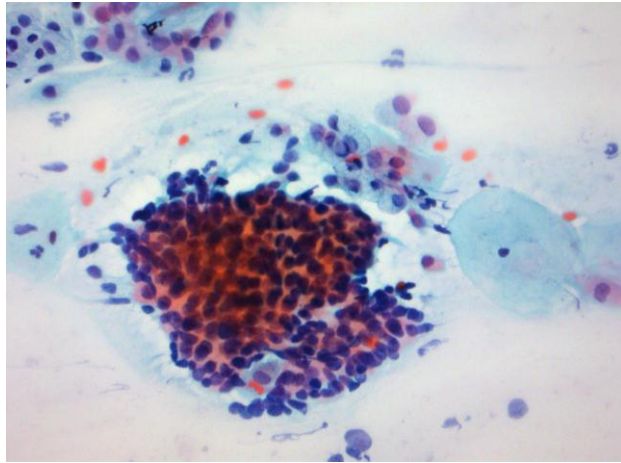
55 år, indbudt, velscreenet, ingen tidligere positive prøver



Prøven besvaret af patolog: Normale celler

Case 1

58 år, indbudt, velscreenet



Prøven besvaret: CIS

Case 1

Portiobiopsier og konus viser svær dysplasi

